



Opportunity

- 64,242 square foot, class B office building
- Freshly upgraded exterior
- On-site gym
- 24/7 security system with card entry
- Balconies with spectacular views of lake and surrounding park-like area with walking trails
- 4/1,000 sf parking
- Located in close proximity to the intersection of U.S. Highway 301 and I-4; just minutes to I-75 and I-275

Get more information

Michael Coppola, Senior Associate
D 813 444 0625
C 813 523 3321
michael.coppola@avisonyoung.com

avisonyoung.com



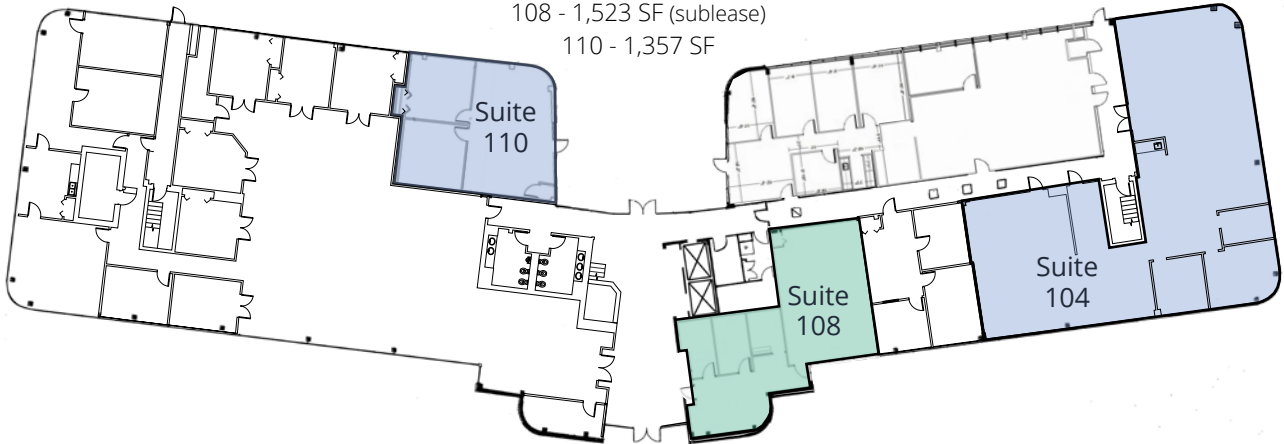
Scan to view flyer digitally

Availabilities

5650 Breckenridge Park Drive
Tampa, Florida 33610

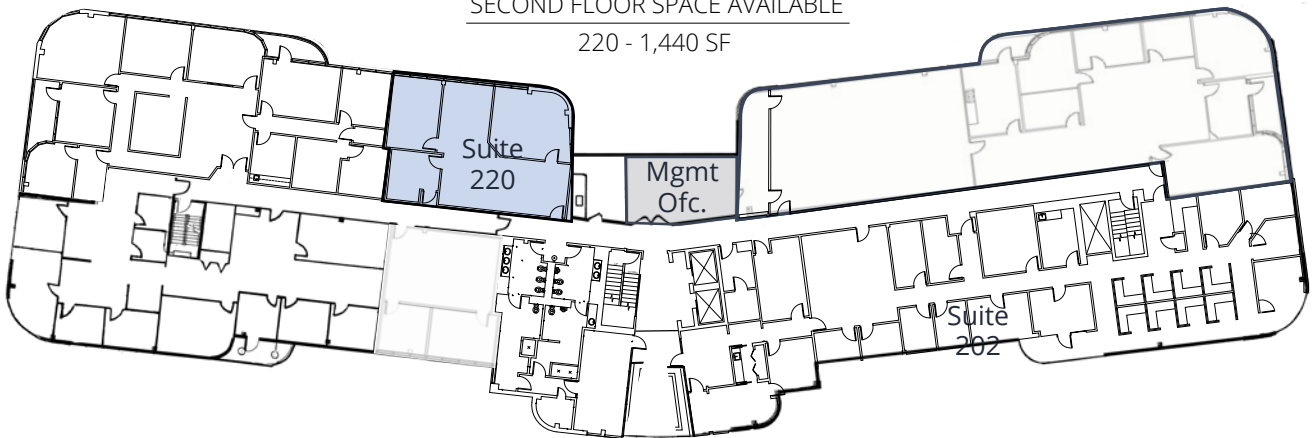
FIRST FLOOR SPACE AVAILABLE

- 104 - 3,593 SF (avail. Q2 2025)
- 108 - 1,523 SF (sublease)
- 110 - 1,357 SF



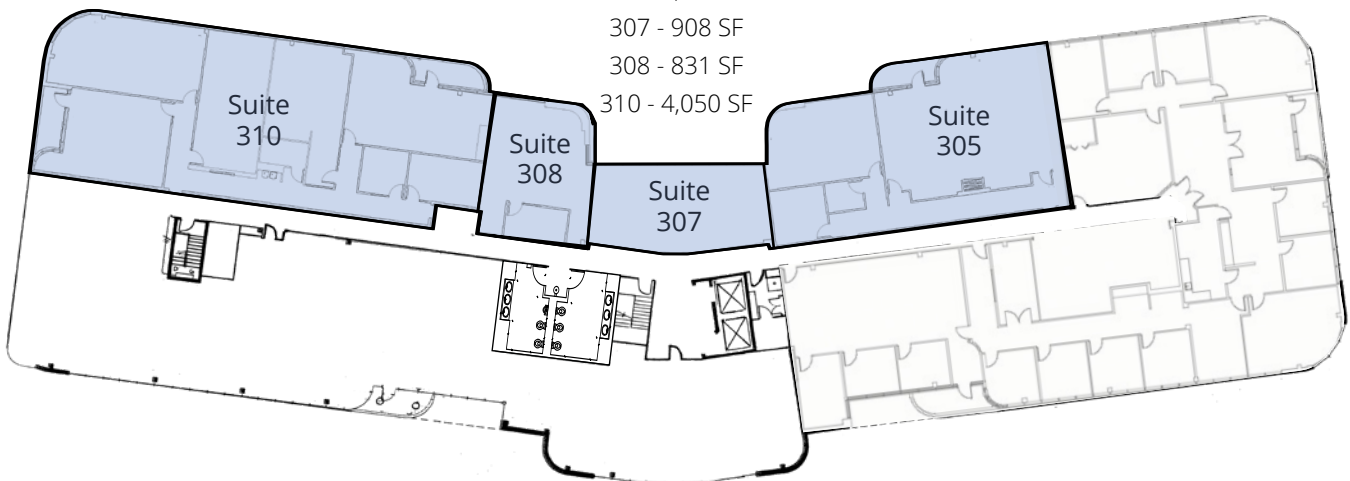
SECOND FLOOR SPACE AVAILABLE

- 220 - 1,440 SF



THIRD FLOOR SPACE AVAILABLE

- 305 - 2,822 SF
- 307 - 908 SF
- 308 - 831 SF
- 310 - 4,050 SF



**Get more
information**

Michael Coppola
Senior Associate
+1 813 444 0625

**AVISON
YOUNG**