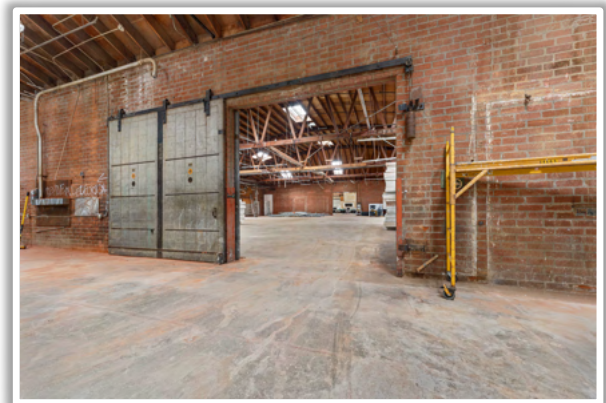
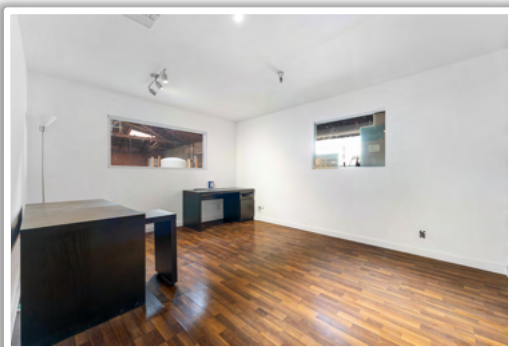


15610 S. Main St. Gardena, CA. 90248



Offered at \$6,880,000

- ◇ Total building square footage is 21,120 (Assessor), lot size is 39,204 SF (Assessor).
- ◇ Warehouse has 16' (approx.) ceilings, highest point is 20' (approx.).
- ◇ Has 4 ground level roll up doors roughly 13'x14'.
- ◇ Utilities connected are gas, electrical (1200 amps - 480 volts), water and sewer.
- ◇ Located in West Rancho Dominguez, unincorporated Los Angeles County, zoned M2.
- ◇ Freestanding property, secured with chain link barbed wire and blocked walls.
- ◇ Total parking spaces 30.
- ◇ Easy access and to all freeways, ports of Los Angeles/Long Beach, and airports.



Tiffany Le | 626-512-0864
DRE #01963022
Happy Home Realty, Inc.