

**FOR SALE**

950 6th Avenue, Suite 212  
San Diego, CA 92101



# Gaslamp Office Suite For Sale

**EMMETT CAHILL**  
619.243.8470  
ecahill@qfcre.com  
BRE #02033604

**PETER WRIGHT**  
619.243.8450  
pwright@qfcre.com  
BRE #01846272

*The information contained here has been obtained from sources considered to be reliable, but no guarantee of its accuracy is made by this company. In addition, no representation is made respecting zoning, condition of title, dimensions or any matters of a legal or environmental nature. Such matters should be referred to legal counsel for determination. Terms and conditions are subject to change without prior notice. Subject to errors and omissions.*

## ASKING PRICE

\$1,199,000

## LEASE RATE

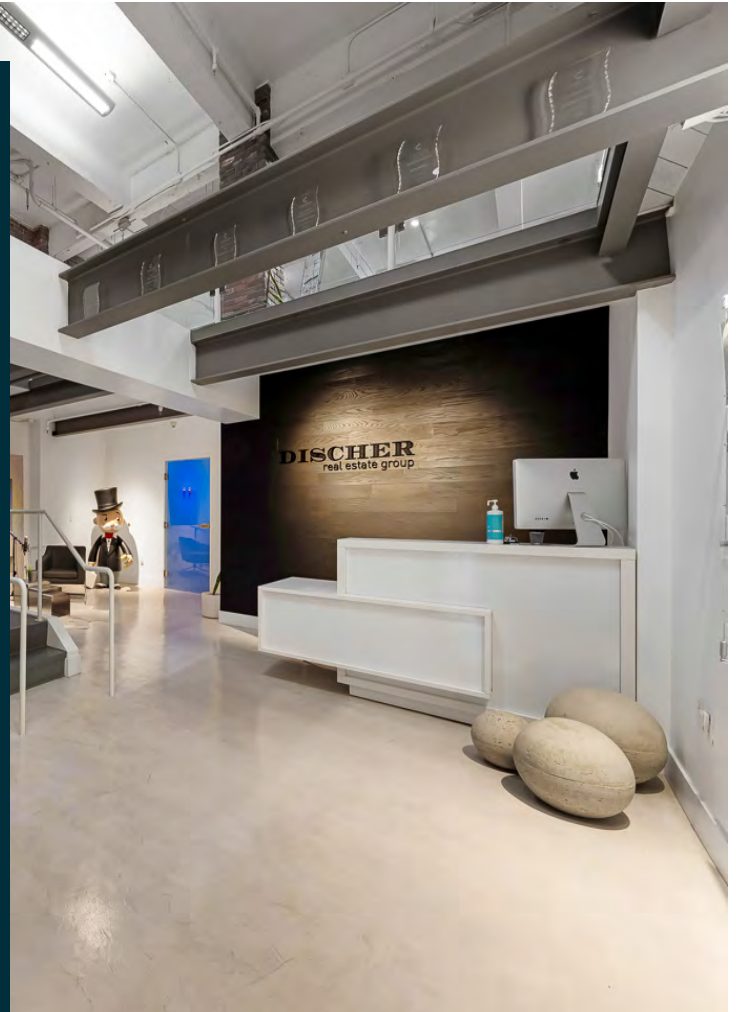
\$2.85 psf Modified Gross

## SPACE AVAILABLE

3,200 SF

## PROPERTY HIGHLIGHTS

- Roof top deck
- Two Bathrooms
- Sauna
- Two A/C units
- Grand open air lobby
- Two parking spaces
- Positioned at the edge of the Gaslamp Quarter on the corner of 6th & Broadway.
- Located in the most revered architectural icons The Samuel Fox Building.
- Designed by renowned architect William Templeton Johnson, it features ornate cast iron grills, large framed windows, ornamental terracotta spandrels and heraldic lions.
- With a 99 walk score, this unit is nestled among the hustle and bustle of a walker's paradise.
- This 2-level ground floor space boasts coveted street-level access & signage rights for the 950 6th Ave entrance awning (must meet Gaslamp Association requirements).



**EMMETT CAHILL**  
619.243.8470  
ecahill@qfcre.com  
BRE #02033604

**PETER WRIGHT**  
619.243.8450  
pwright@qfcre.com  
BRE #01846272

*The information contained here has been obtained from sources considered to be reliable, but no guarantee of its accuracy is made by this company. In addition, no representation is made respecting zoning, condition of title, dimensions or any matters of a legal or environmental nature. Such matters should be referred to legal counsel for determination. Terms and conditions are subject to change without prior notice. Subject to errors and omissions.*





## PHOTOS

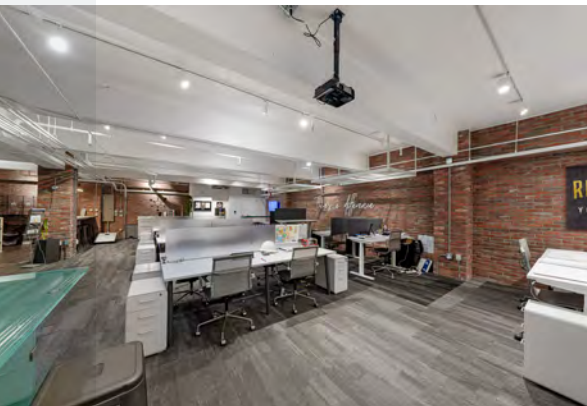
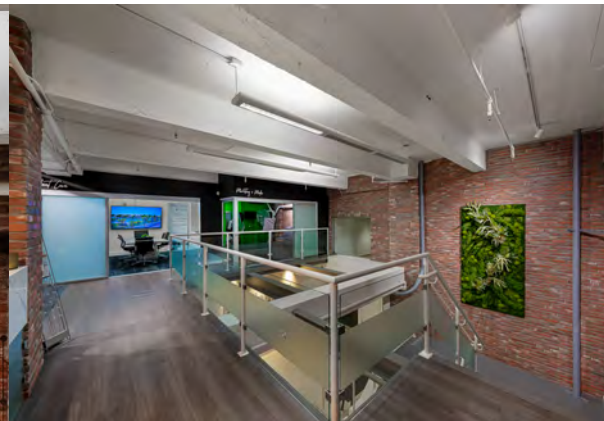
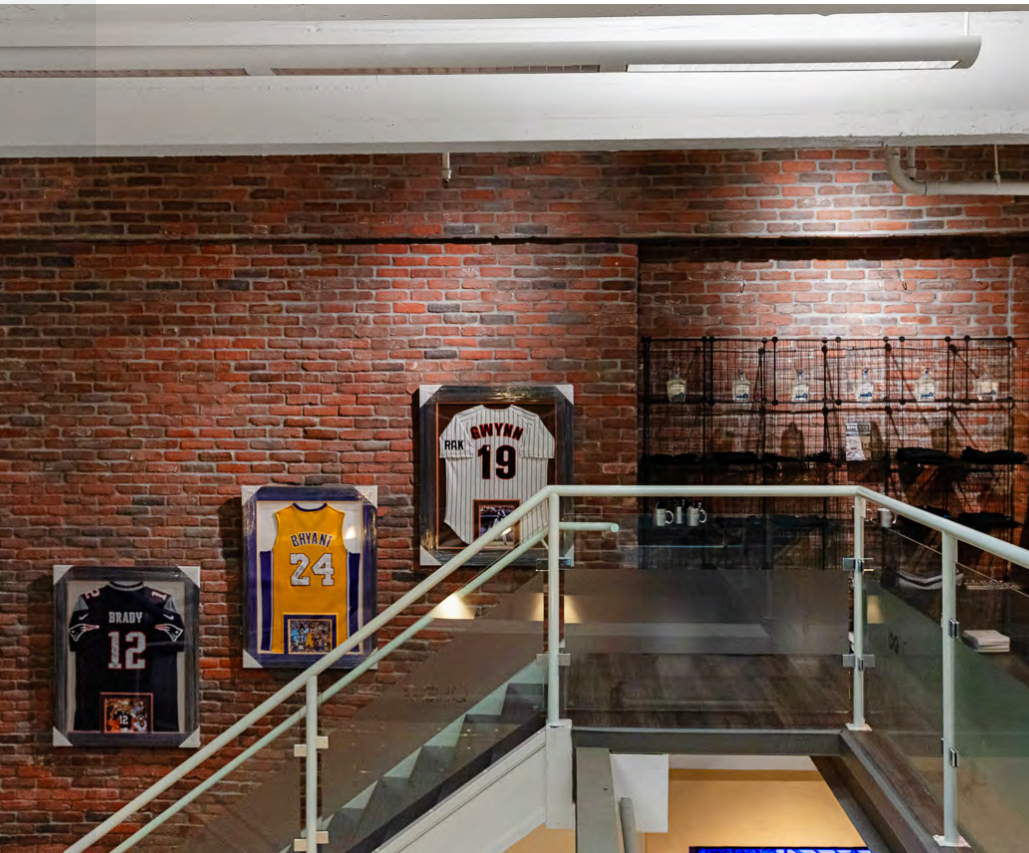


**EMMETT CAHILL**  
619.243.8470  
ecahill@qfcre.com  
BRE #02033604

**PETER WRIGHT**  
619.243.8450  
pwright@qfcre.com  
BRE #01846272

The information contained here has been obtained from sources considered to be reliable, but no guarantee of its accuracy is made by this company. In addition, no representation is made respecting zoning, condition of title, dimensions or any matters of a legal or environmental nature. Such matters should be referred to legal counsel for determination. Terms and conditions are subject to change without prior notice. Subject to errors and omissions.





**EMMETT CAHILL**  
619.243.8470  
ecahill@qfcre.com  
BRE #02033604

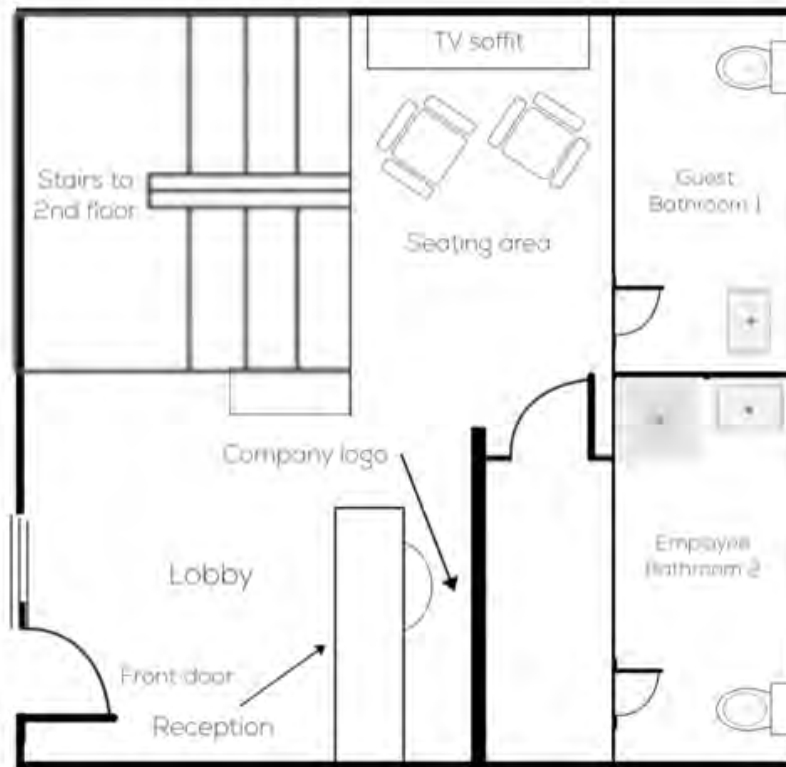
**PETER WRIGHT**  
619.243.8450  
pwright@qfcre.com  
BRE #01846272

The information contained here has been obtained from sources considered to be reliable, but no guarantee of its accuracy is made by this company. In addition, no representation is made respecting zoning, condition of title, dimensions or any matters of a legal or environmental nature. Such matters should be referred to legal counsel for determination. Terms and conditions are subject to change without prior notice. Subject to errors and omissions.



# Floor Plan

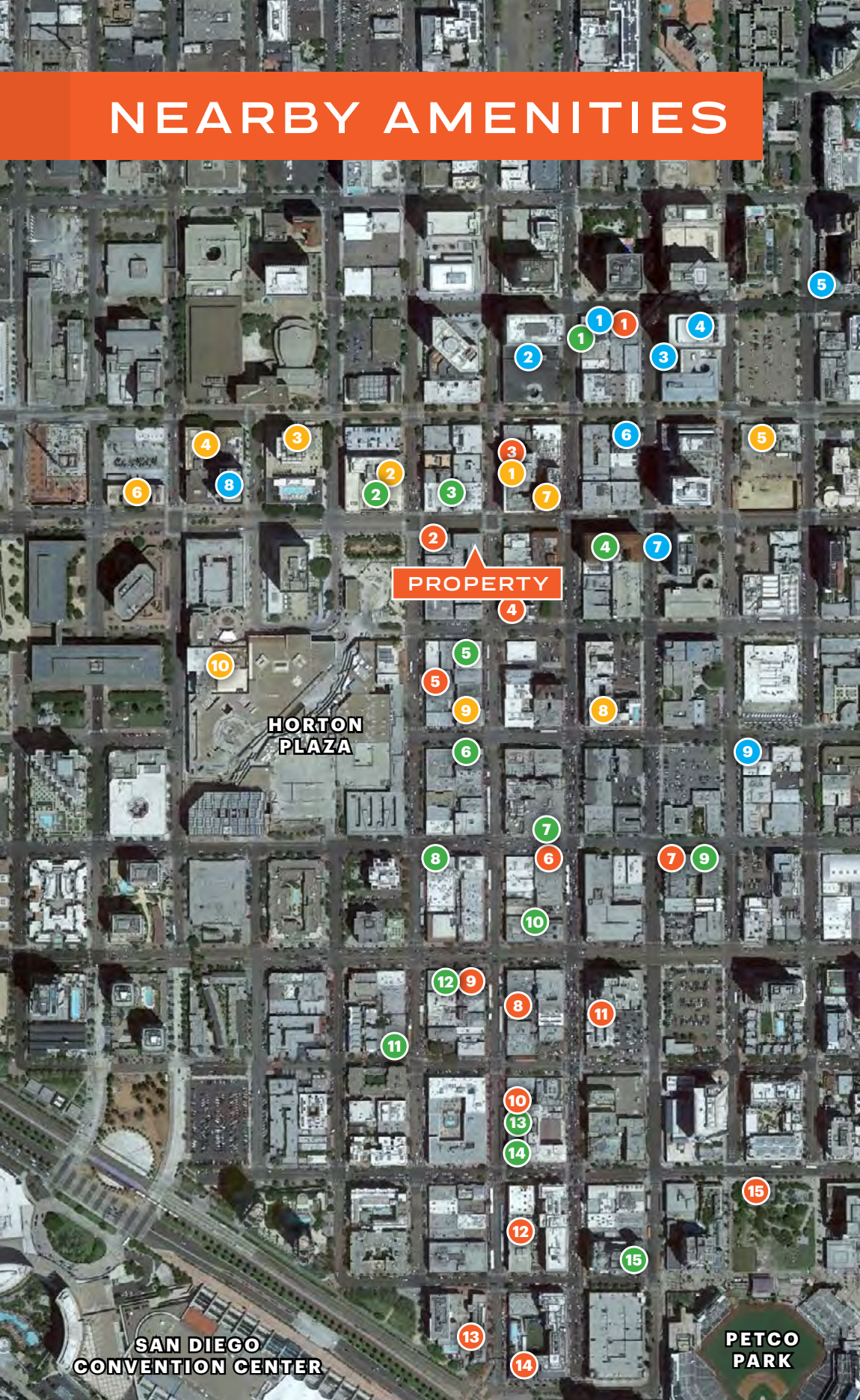
## First Floor



## Second Floor



# NEARBY AMENITIES



## RESTAURANTS

1. Donut Bar
2. Gaslamp Fish House
3. Curadero
4. Melting Pot
5. Bandar Restaurant
6. Fogo de Chao
7. Breakfast Republic
8. Rustic Root
9. El Chingon
10. Lionfish
11. The Nolen
12. Cafe Sevilla
13. Lou & Mickey's
14. Nobu
15. Social Tap

## HOTELS

1. Kimpton Hotel
2. The US Grant
3. The Westgate Hotel
4. The Bristol Hotel
5. Hotel Churchill
6. The Sofia Hotel
7. Courtyard Marriott
8. Andaz San Diego
9. The Keating Hotel
10. The Westin

## BARS & BREWPUBS

1. Stout Public House
2. Rendezvous
3. Phantom Lounge
4. Parq
5. Gaslamp Tavern
6. Atomic
7. 5th & Sky
8. Tin Roof
9. Noble Experiment
10. Side Bar
11. Fluxx
12. Prohibition
13. The Pool House
14. Fifth and Rose
15. Altitude

## COFFEE

1. Starbucks
2. 401 Brew Street
3. Coffee N' Talk
4. 7 Cafe
5. Little Owl Coffee
6. Organo Gold
7. The Bean Box
8. Blue Bottle Coffee
9. Tired Eyes Coffee

**EMMETT CAHILL**

619.243.8470

ecahill@qfcre.com

BRE #02033604

**PETER WRIGHT**

619.243.8450

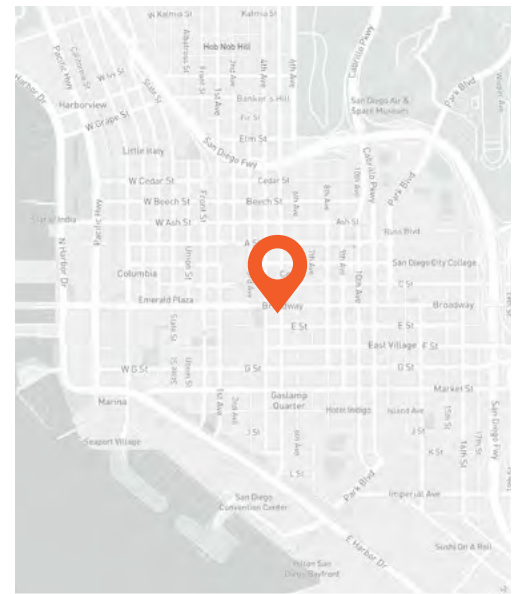
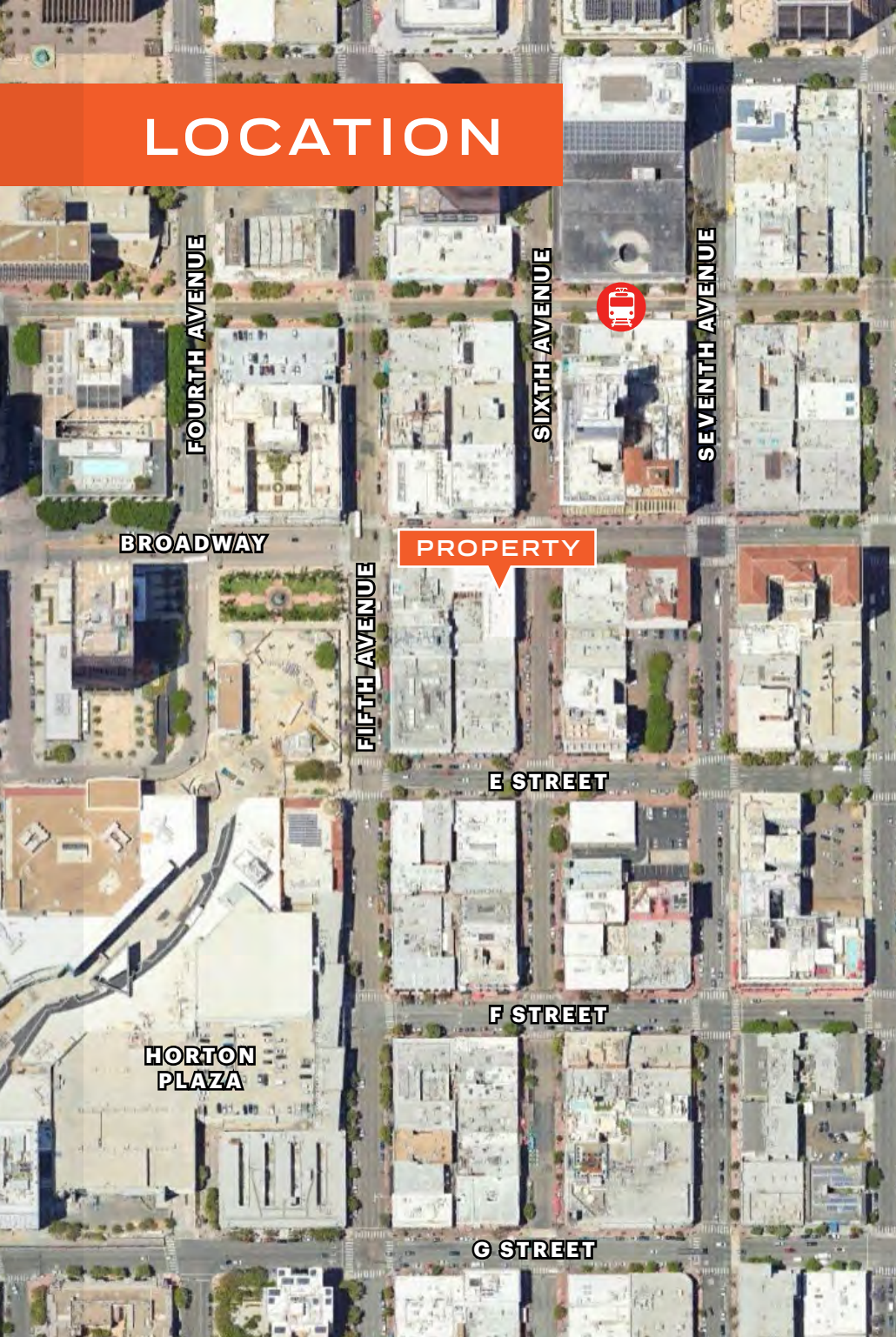
pwright@qfcre.com

BRE #01846272

The information contained here has been obtained from sources considered to be reliable, but no guarantee of its accuracy is made by this company. In addition, no representation is made respecting zoning, condition of title, dimensions or any matters of a legal or environmental nature. Such matters should be referred to legal counsel for determination. Terms and conditions are subject to change without prior notice. Subject to errors and omissions.



# LOCATION



- Terrific location on 5th Avenue in the Gaslamp District of Downtown San Diego
- In close proximity to Petco Park, San Diego Convention Center, and Horton Plaza
- Dozens of restaurants, cafes and bars within a 5-block radius

## WALKING DISTANCE

to numerous restaurants & retail

## STEPS

to Petco Park & trolley station

**EMMETT CAHILL**  
619.243.8470  
ecahill@qfcre.com  
BRE #02033604

**PETER WRIGHT**  
619.243.8450  
pwright@qfcre.com  
BRE #01846272

*The information contained here has been obtained from sources considered to be reliable, but no guarantee of its accuracy is made by this company. In addition, no representation is made respecting zoning, condition of title, dimensions or any matters of a legal or environmental nature. Such matters should be referred to legal counsel for determination. Terms and conditions are subject to change without prior notice. Subject to errors and omissions.*



**FOR SALE**

950 6th Avenue, Suite 212  
San Diego, CA 92101



# Contact Information

**QFC REAL ESTATE**

1495 Pacific Highway, Suite 450  
San Diego, CA 92101  
619.243.8454 • [qfcre.com](http://qfcre.com)

**EMMETT CAHILL**

619.243.8470  
[ecahill@qfcre.com](mailto:ecahill@qfcre.com)  
BRE #02033604

**PETER WRIGHT**

619.243.8450  
[pwright@qfcre.com](mailto:pwright@qfcre.com)  
BRE #01846272

The information contained here has been obtained from sources considered to be reliable, but no guarantee of its accuracy is made by this company. In addition, no representation is made respecting zoning, condition of title, dimensions or any matters of a legal or environmental nature. Such matters should be referred to legal counsel for determination. Terms and conditions are subject to change without prior notice. Subject to errors and omissions.