

# 930 Battersby Ave Enumclaw, WA

5,505 SF  
INDUSTRIAL SPACE  
FOR LEASE



# 930 Battersby Ave Enumclaw, WA

# AVAILABLE SPACES

**INDUSTRIAL SPACE - ENUMCLAW**  
LOCATION, LOCATION, LOCATION!  
HIGH QUALITY INDUSTRIAL SPACE!

Suite	Total SF	Office SF	Warehouse SF	Loading
101 930 Battersby Ave	5,505 SF	1,201 SF	4,304 SF	2 GL

**Rent:** \$1.10/SF/Month- Blended with \$.34 SF/Month for NNN's



The information contained herein has been obtained from reliable sources, but is not guaranteed. A prospective buyer/tenant should verify each item relating to this property and all information contained herein.

**BEN HEMPHILL**  
(425) 941-1320  
bhemphill@andoverco.com

**MIKE HEMPHILL**  
(206) 550-4176  
mhemphill@andoverco.com

# 930 Battersby Ave Enumclaw, WA

# PROPERTY HIGHLIGHTS



MODERN  
OFFICE SPACE



22'  
CLEAR HEIGHT



OVERSIZED GRADE  
LEVEL DOORS



CLOSE TO NEARBY  
AMENITIES



AVAILABLE  
IN 2026



RATES:  
PLEASE CALL LISTING  
BROKERS



The information contained herein has been obtained from reliable sources, but is not guaranteed. A prospective buyer/tenant should verify each item relating to this property and all information contained herein.

**BEN HEMPHILL**  
(425) 941-1320  
bhemphill@andoverco.com

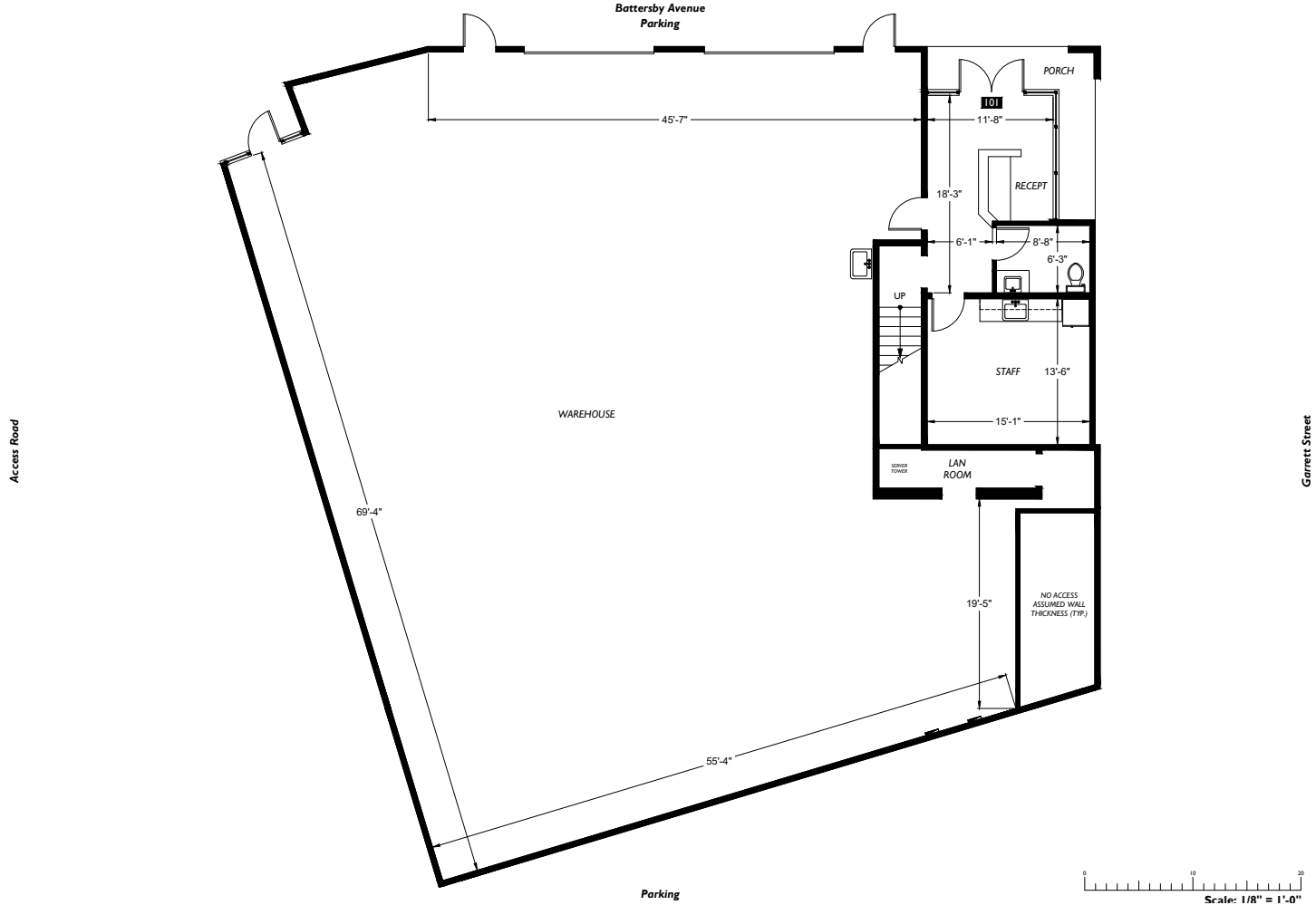
**MIKE HEMPHILL**  
(206) 550-4176  
mhemphill@andoverco.com

THE ANDOVER COMPANY, INC.

# SUITE 101

930 Battersby Ave  
Enumclaw, WA

# 1ST FLOOR PLAN



The information contained herein has been obtained from reliable sources, but is not guaranteed. A prospective buyer/tenant should verify each item relating to this property and all information contained herein.

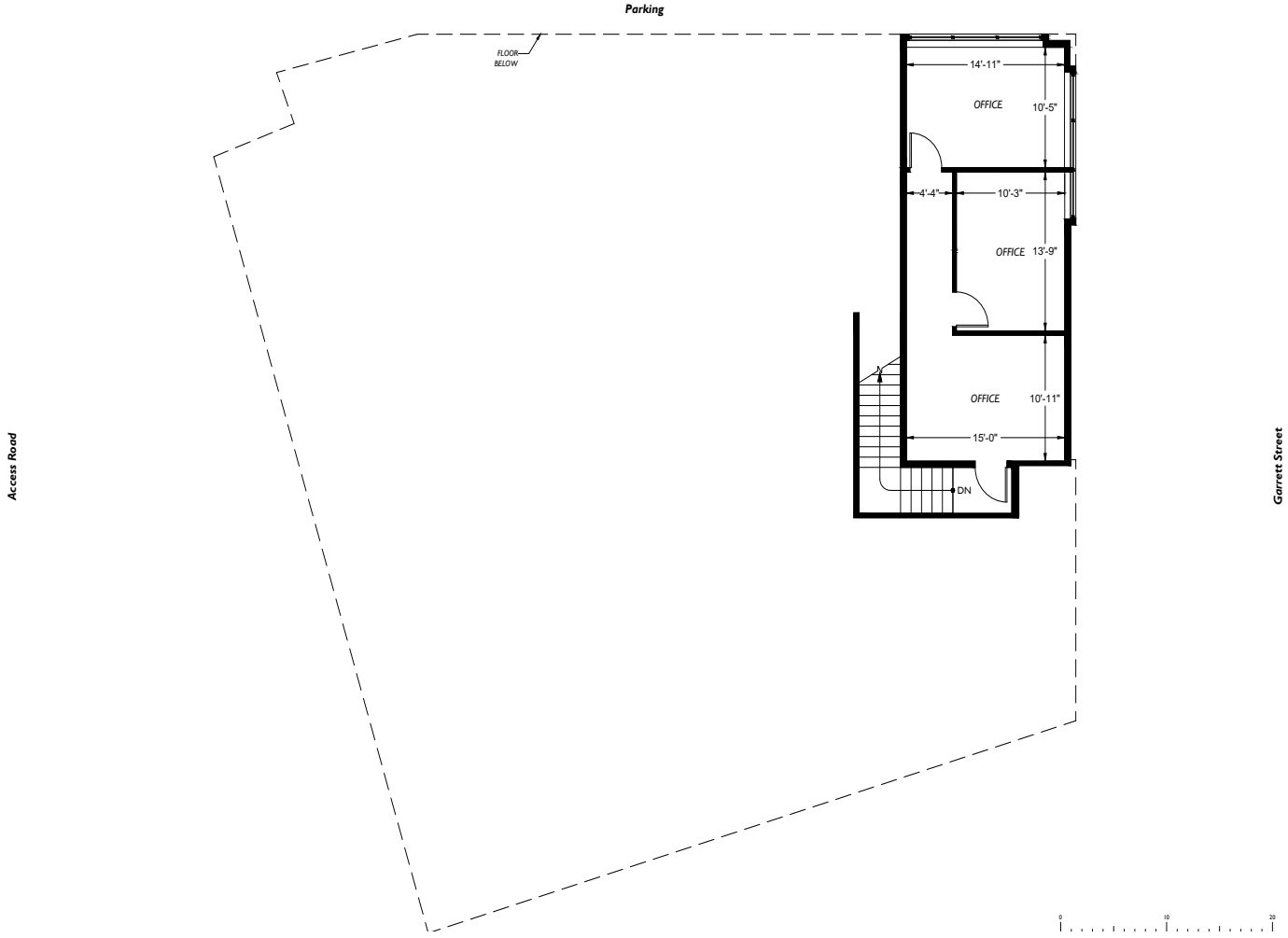
**BEN HEMPHILL**  
(425) 941-1320  
bhemphill@andoverco.com

**MIKE HEMPHILL**  
(206) 550-4176  
mhemphill@andoverco.com

THE ANDOVER COMPANY, INC.

**SUITE 101**  
930 Battersby Ave  
Enumclaw, WA

**2ND FLOOR PLAN**



The information contained herein has been obtained from reliable sources, but is not guaranteed. A prospective buyer/tenant should verify each item relating to this property and all information contained herein.

**BEN HEMPHILL**  
(425) 941-1320  
bhemphill@andoverco.com

**MIKE HEMPHILL**  
(206) 550-4176  
mhemphill@andoverco.com

# 930 Battersby Ave Enumclaw, WA

# AMENITIES



The information contained herein has been obtained from reliable sources, but is not guaranteed. A prospective buyer/tenant should verify each item relating to this property and all information contained herein.

**BEN HEMPHILL**  
(425) 941-1320  
bhemphill@andoverco.com

**MIKE HEMPHILL**  
(206) 550-4176  
mhemphill@andoverco.com

# 930 Battersby Ave Enumclaw, WA

930

**BEN HEMPHILL**  
(425) 941-1320  
bhemphill@andoverco.com

**MIKE HEMPHILL**  
(206) 550-4176  
mhemphill@andoverco.com

5,505 SF  
INDUSTRIAL SPACE  
FOR LEASE

 **THE ANDOVER  
COMPANY, INC.**  
CORFAC INTERNATIONAL