

LAND FOR SALE

POWER OF SALE REDEVELOPMENT

10 SILVERDALE CRESCENT, TORONTO, ON M3A 3H1

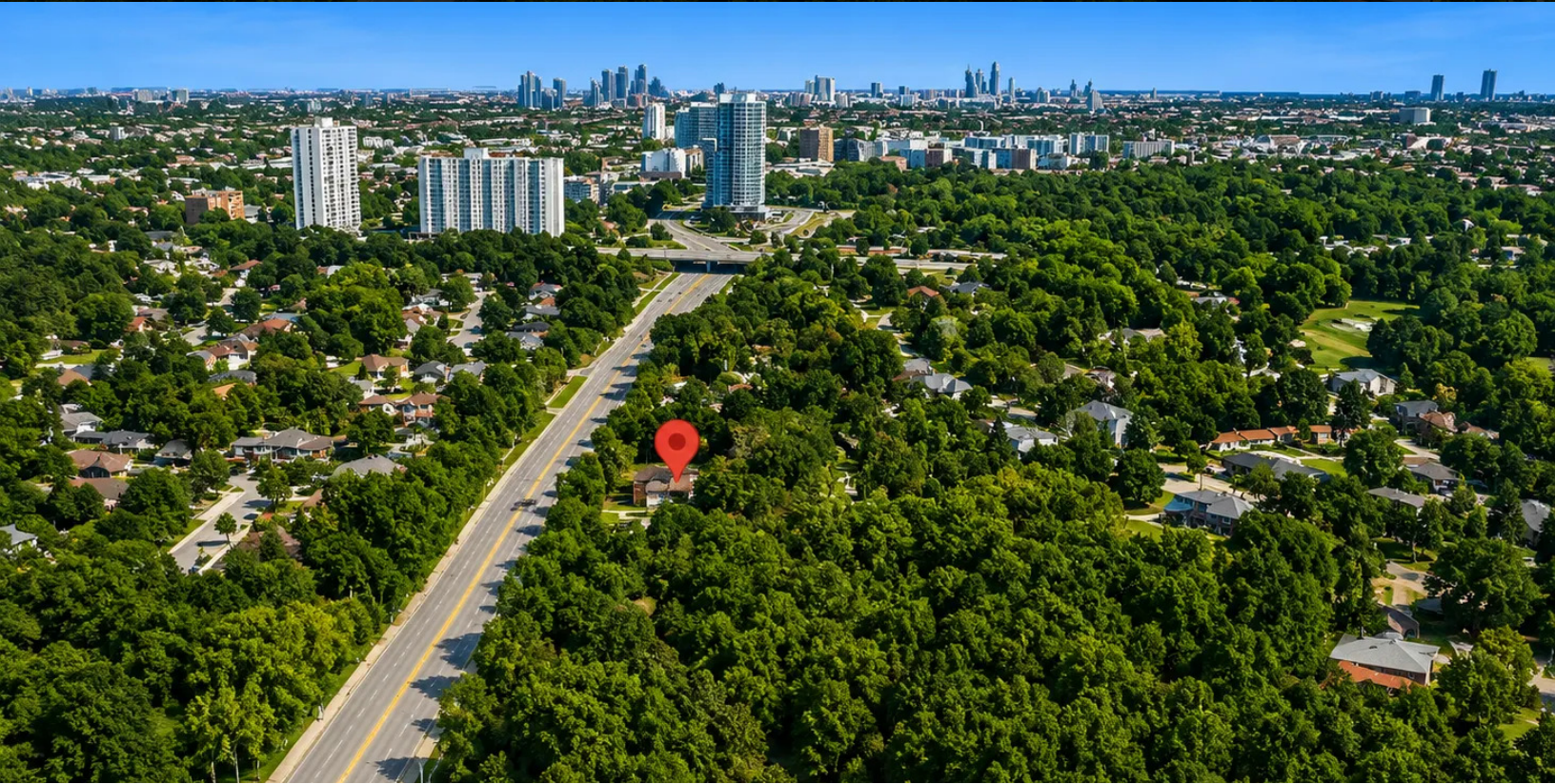


JACOB VANDERBREGGEN
Commercial Sales Representative
+1(905)876.5656

LAND FOR SALE

POWER OF SALE REDEVELOPMENT

10 SILVERDALE CRESCENT, TORONTO, ON M3A 3H1



VIDEO

PROPERTY DESCRIPTION

Power of sale development site located in North York, backing onto Donalda Golf Club. The property comprises approximately 0.89 acres positioned on a corner lot with strong frontage and site depth.

Zoning permits multiple residential development options, including townhouse form (up to 4 storeys) or mid-rise apartment building (up to 6 storeys), allowing flexibility in project configuration and density.

Planning analysis and supporting work has been initiated, enabling a purchaser to advance the entitlement process without starting from baseline. Two residential units are currently leased, providing interim holding income.

PROPERTY HIGHLIGHTS

- 0.89-acre corner site with defined frontage and depth
- Backs onto Donalda Golf Club
- Zoning supports townhouse or mid-rise residential development
- Preliminary planning work completed
- Existing tenancies provide holding income

OFFERING SUMMARY

Sale Price	\$4,499,000
Lot Size	0.896 Acres
MLS #	C13115702

JACOB VANDERBREGGEN
Commercial Sales Representative
+1(905)876.5656



ROYAL LEPAGE® REAL ESTATE SERVICES LTD.
905.257.3633
<https://vanderbreggenrealty.com>

LAND FOR SALE

POWER OF SALE REDEVELOPMENT

10 SILVERDALE CRESCENT, TORONTO, ON M3A 3H1

VBR
VANDERBREGGEN
REALTY



LOCATION OVERVIEW

Established North York neighbourhood with direct adjacency to Donalda Golf Club and surrounding parkland. Area supports low- to mid-density residential development with consistent end-user demand.

Access to Don Valley Parkway and Highway 401 provides efficient connectivity across the GTA. Nearby schools, retail, and recreational amenities support family-oriented housing formats.

JACOB VANDERBREGGEN
Commercial Sales Representative
+1(905)876.5656

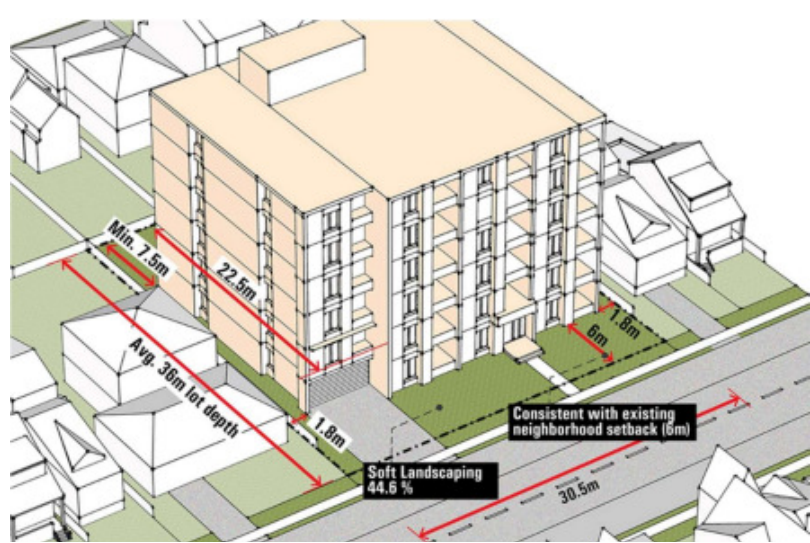
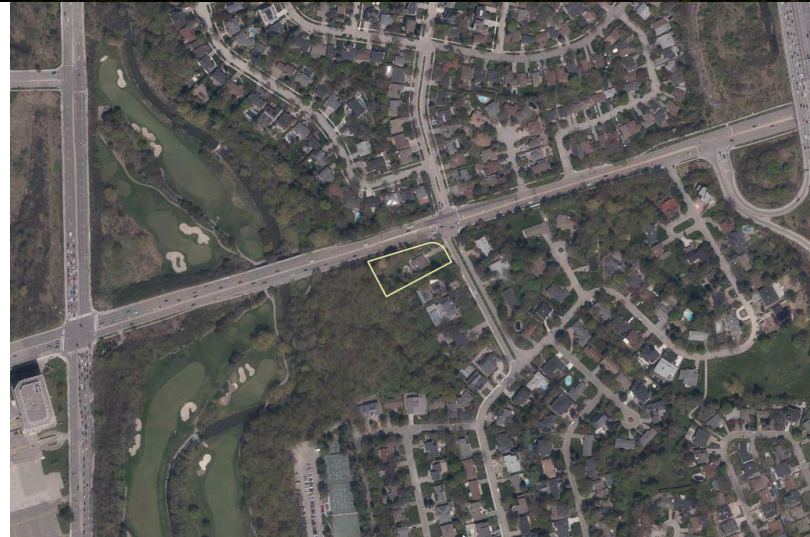
ROYAL LEPAGE
COMMERCIAL

ROYAL LEPAGE® REAL ESTATE SERVICES LTD.
905.257.3633
<https://vanderbreggenrealty.com>

LAND FOR SALE

POWER OF SALE REDEVELOPMENT

10 SILVERDALE CRESCENT, TORONTO, ON M3A 3H1



JACOB VANDERBREGGEN
Commercial Sales Representative
+1(905)876.5656



ROYAL LEPAGE® REAL ESTATE SERVICES LTD.
905.257.3633
<https://vanderbreggenrealty.com>

LAND FOR SALE

POWER OF SALE REDEVELOPMENT

10 SILVERDALE CRESCENT, TORONTO, ON M3A 3H1



JACOB VANDERBREGGEN

Commercial Sales Representative

Jacob@royalpage.ca

Direct: +1(905)876.5656

PROFESSIONAL BACKGROUND

Jacob Vanderbreggen specializes in land and development transactions across the Greater Golden Horseshoe, with experience in land assemblies, infill redevelopment sites, and structured sale processes including power of sale and receivership. He works closely with developers, investors, and lenders to position assets, drive competitive interest, and execute land deals across evolving urban markets.

Royal LePage® Real Estate Services Ltd.
400- 231 Oak Park Blvd
Oakville, ON L6H7S8
905.257.3633

JACOB VANDERBREGGEN
Commercial Sales Representative
+1(905)876.5656



ROYAL LEPAGE® REAL ESTATE SERVICES LTD.
905.257.3633
<https://vanderbreggenrealty.com>