



±12,000-SF GROUND FLOOR DIVIDABLE OFFICE SPACE BERKELEY – WALK TO BART



2484 Shattuck Avenue
Berkeley

Represented by:

Matt Gondak

510 450 1434

mgondak@mrecommercial.com

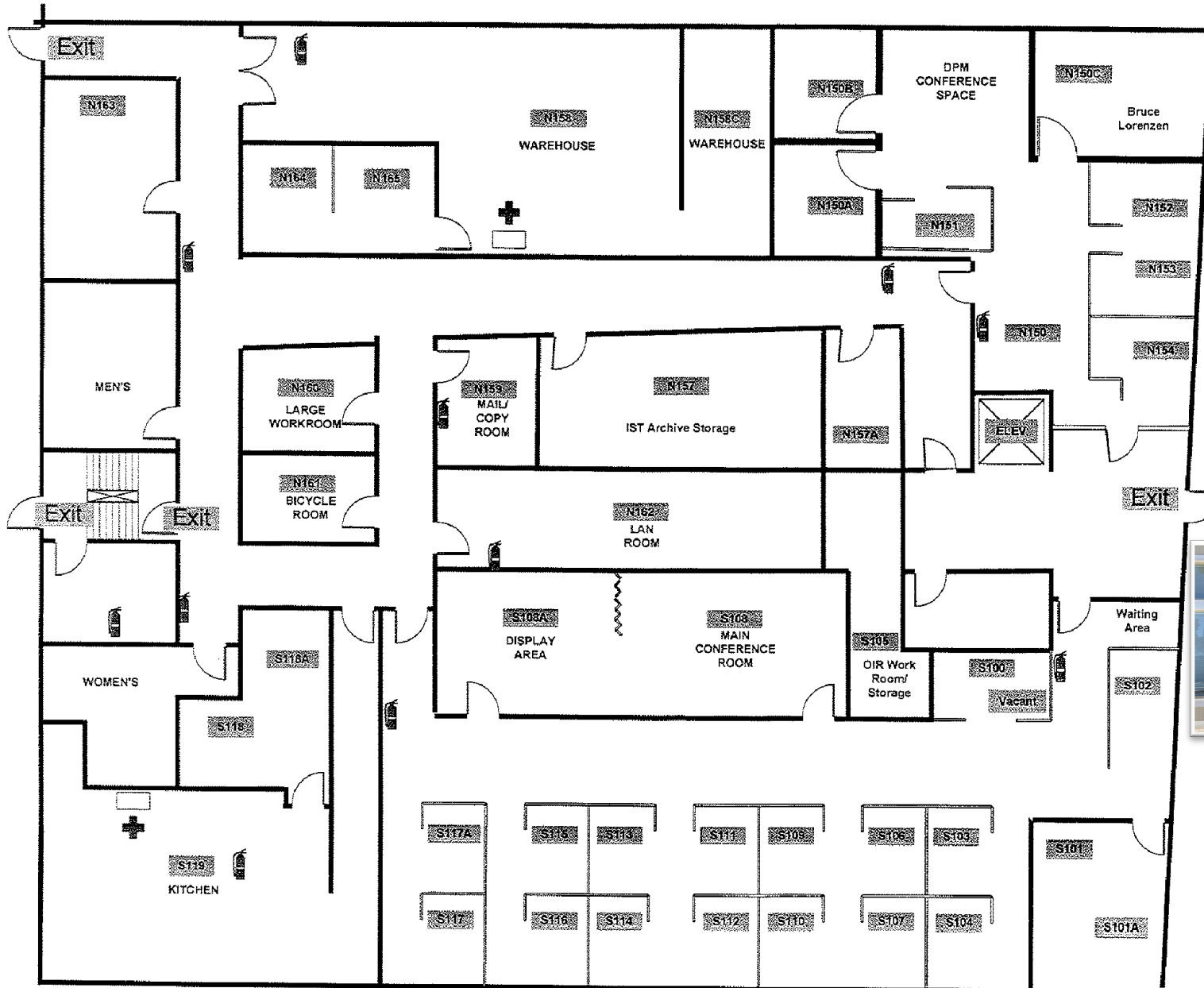
CA DRE No: 00832220

\$3.25 PSF
IG

±12,000-SF ground floor dividable office space with open areas, large conference room, workspaces and lunchroom.

Previously occupied by UCB.





FIRST FLOOR

