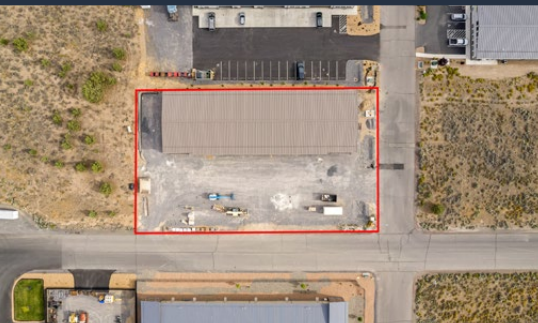


FOR LEASE

11,970 SF | \$1.10 SF/MO. NNN

New Construction Industrial Building

Page Court, Prineville, OR 97754



PROPERTY DETAILS

Suite 1:	5,959 SF
Suite 2:	6,011 SF
Lease Rate:	\$1.10/SF/Mo. NNN
CAMs:	Est. at \$0.25/SF/Mo.
Lot Size:	11,970 SF
Zoning:	Light Industrial (M1)

HIGHLIGHTS

- Clear span warehouse
- Steel building with masonry wainscoting
- 3 phase 200A power
- 14' high roll up doors
- Close proximity to Hwy 126 and Facebook Data Center

Bruce Churchill, Principal Broker

600 SW Columbia St., Ste. 6100 | Bend, OR 97702

541.383.2444 | www.CompassCommercial.com

COMPASS
COMMERCIAL

**REAL
ESTATE
SERVICES**

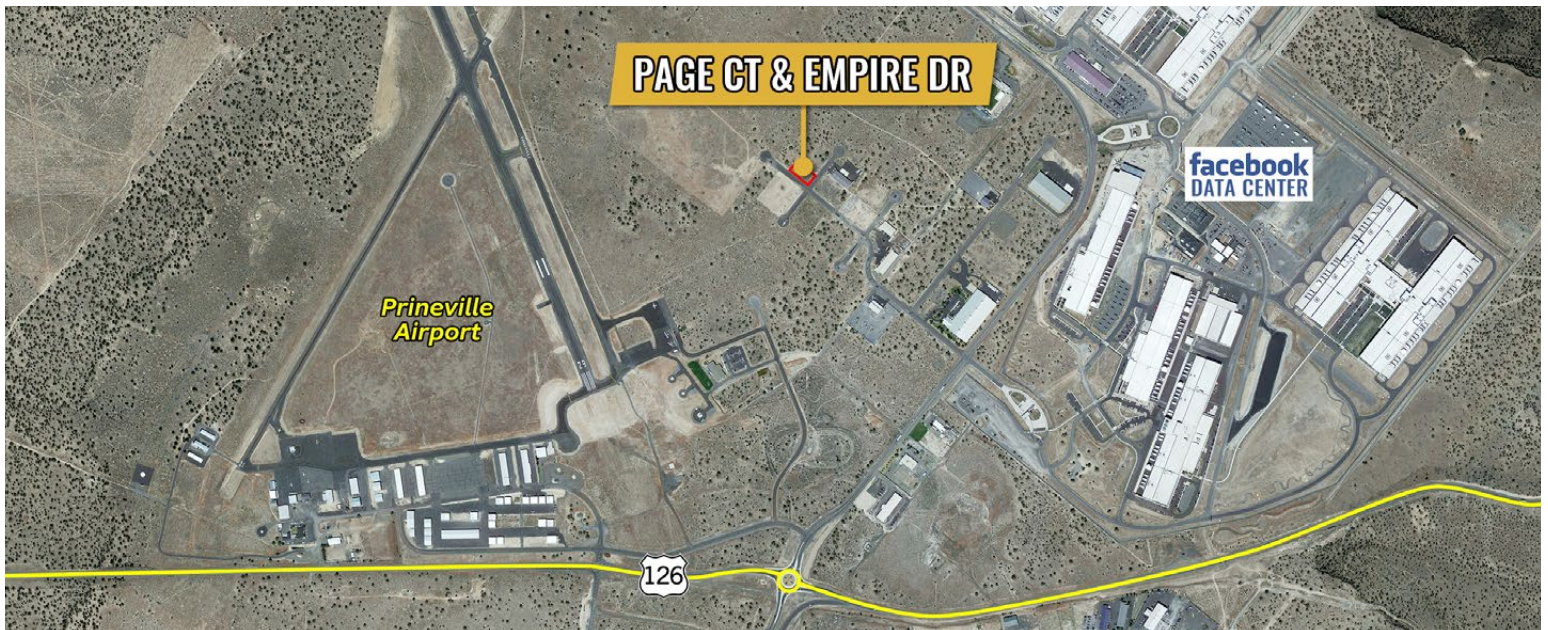
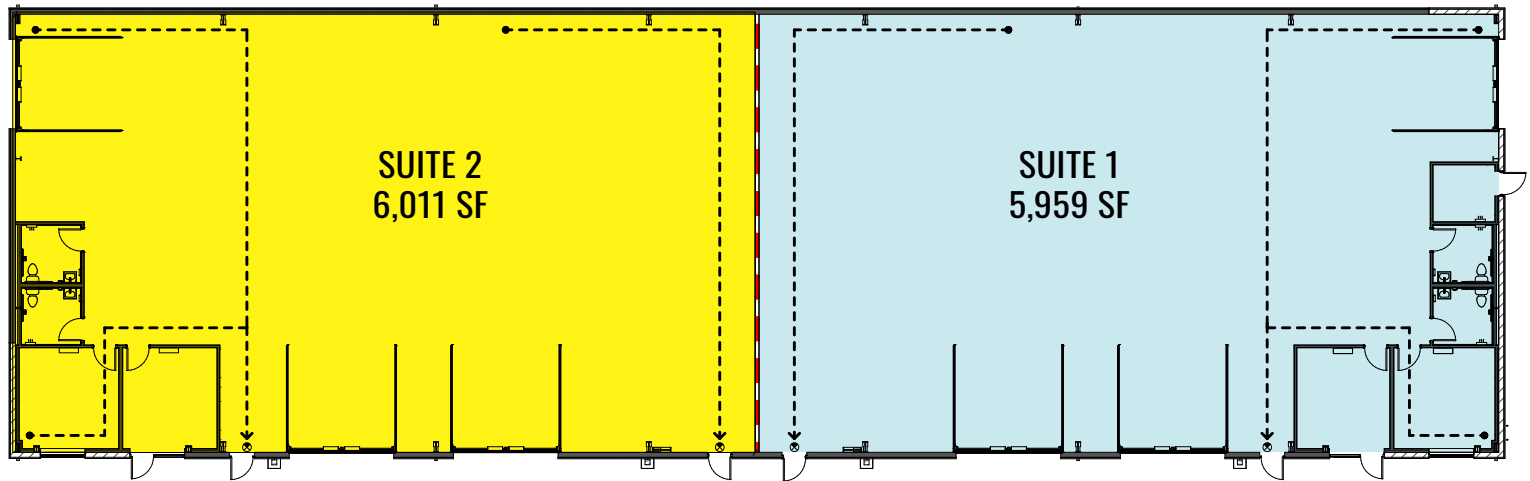
FOR LEASE

11,970 SF | \$1.10 SF/MO. NNN

New Construction Industrial Building

Page Court, Prineville, OR 97754

FLOOR PLAN



Broker is licensed in the state of Oregon. This information has been furnished from sources we deem reliable, but for which we assume no liability. This is an exclusive listing. The information contained herein is given in confidence with the understanding that all negotiations pertaining to this property be handled through Compass Commercial Real Estate Services. All measurements are approximate.



Bruce Churchill

Principal Broker

Cell 541.280.7560

bchurchill@compasscommercial.com

COMPASS
COMMERCIAL

**REAL
ESTATE
SERVICES**