

**We believe we
can beat your
current rent.
Give us a call!**

150

Grand Street

Quality Office Space

White Plains CBD

Free Visitor Parking

Priced To Lease



**These are our asking rents.
Let's see what we can do for you.**

Suite	SF	Rent/Mo *
301	1,563	\$ 4,037.75
303	1,600	\$ 4,133.33
304	2,836	\$ 7,326.33
301-303	3,163	\$ 8,171.08
400	3,261	\$ 8,424.25
401	1,474	\$ 3,807.83
402	2,306	\$ 5,957.17
403	1,780	\$ 4,598.33
400-401	4,735	\$ 12,232.08
402-403	4,086	\$ 10,555.50
501	2,125	\$ 5,489.58
605	4,356	\$ 11,253.00






* These are our asking rents plus tenant electric. Prices are subject to negotiation of a lease.






Modern amenities & style to match.



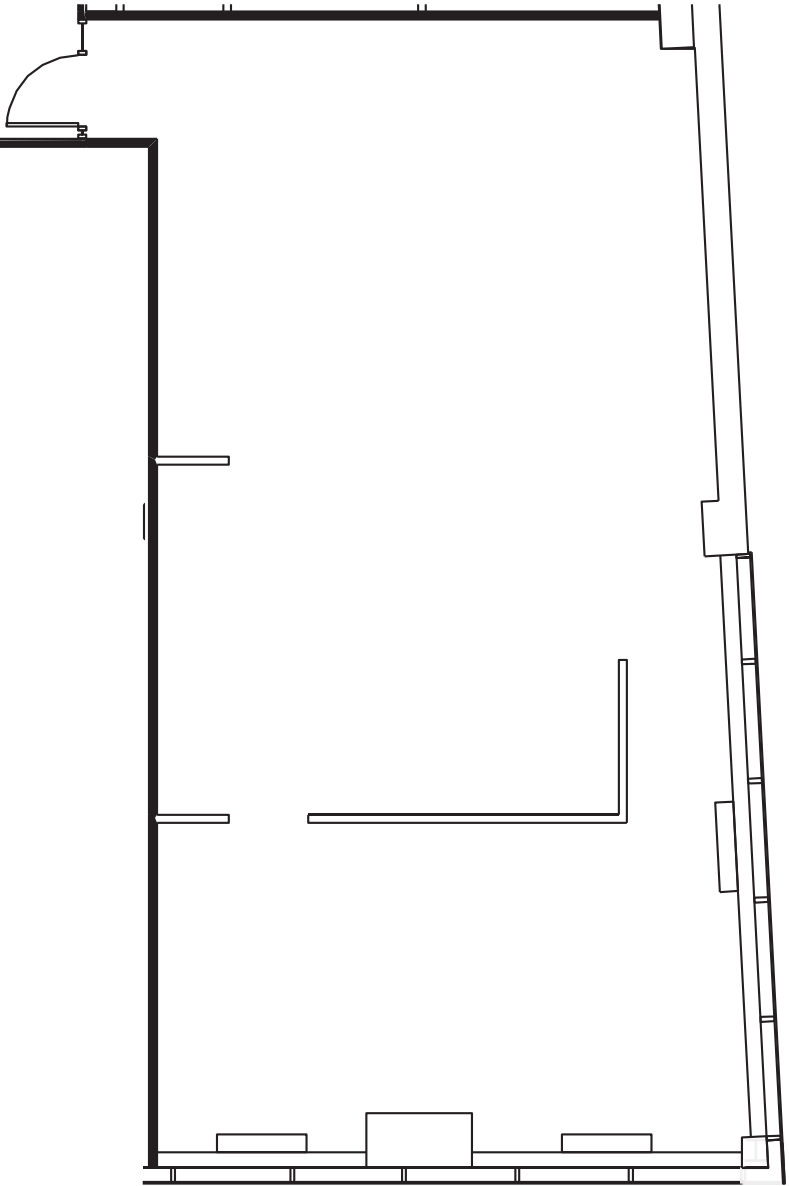
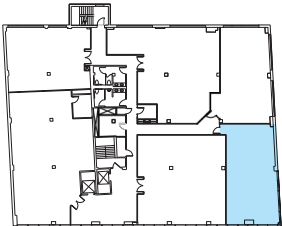
New
Cafe
Coming
Soon!

-  New entrance and lobby
-  Fitness center
-  On-site cafe
-  Covered parking
-  Free visitor parking

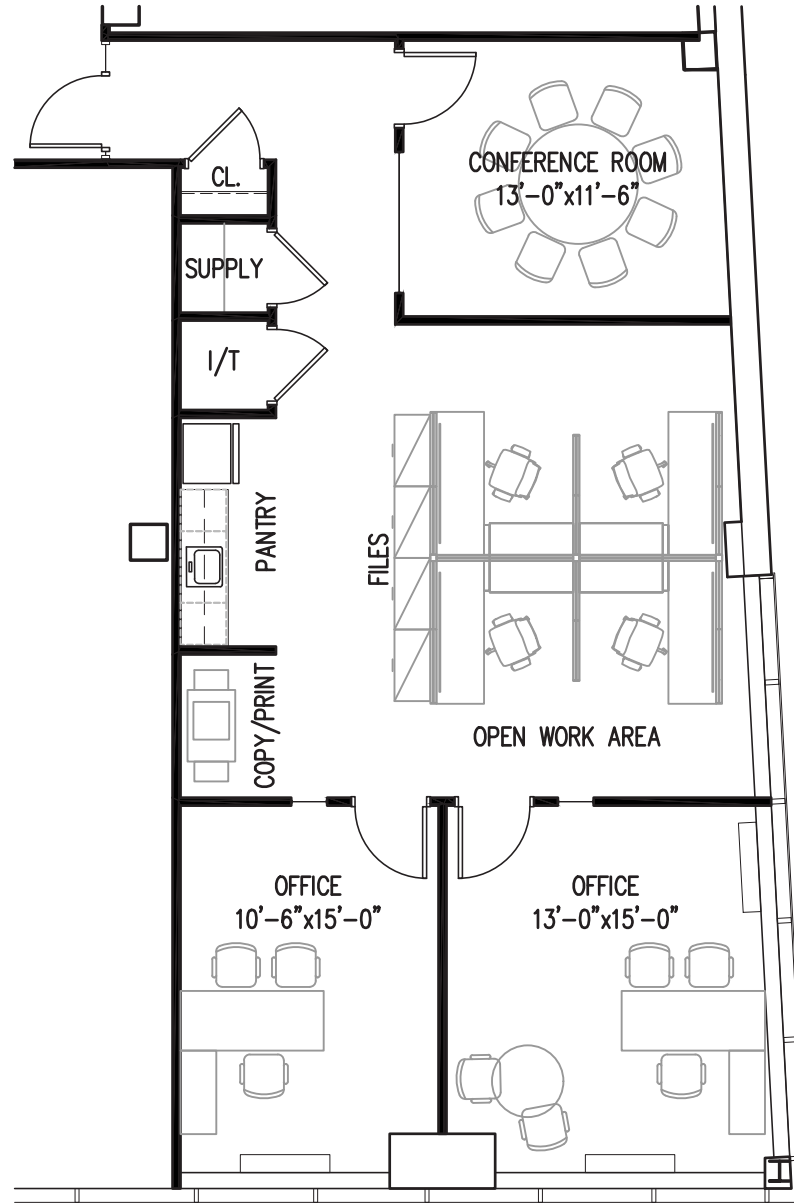
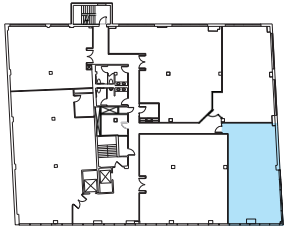
-  On-site security
-  24/7 card-key access
-  Great location
Directly across from the Court House
Walking to Metro North and area amenities

**150 Grand Street
Floor 3 | Suite 301
1,563 SF**

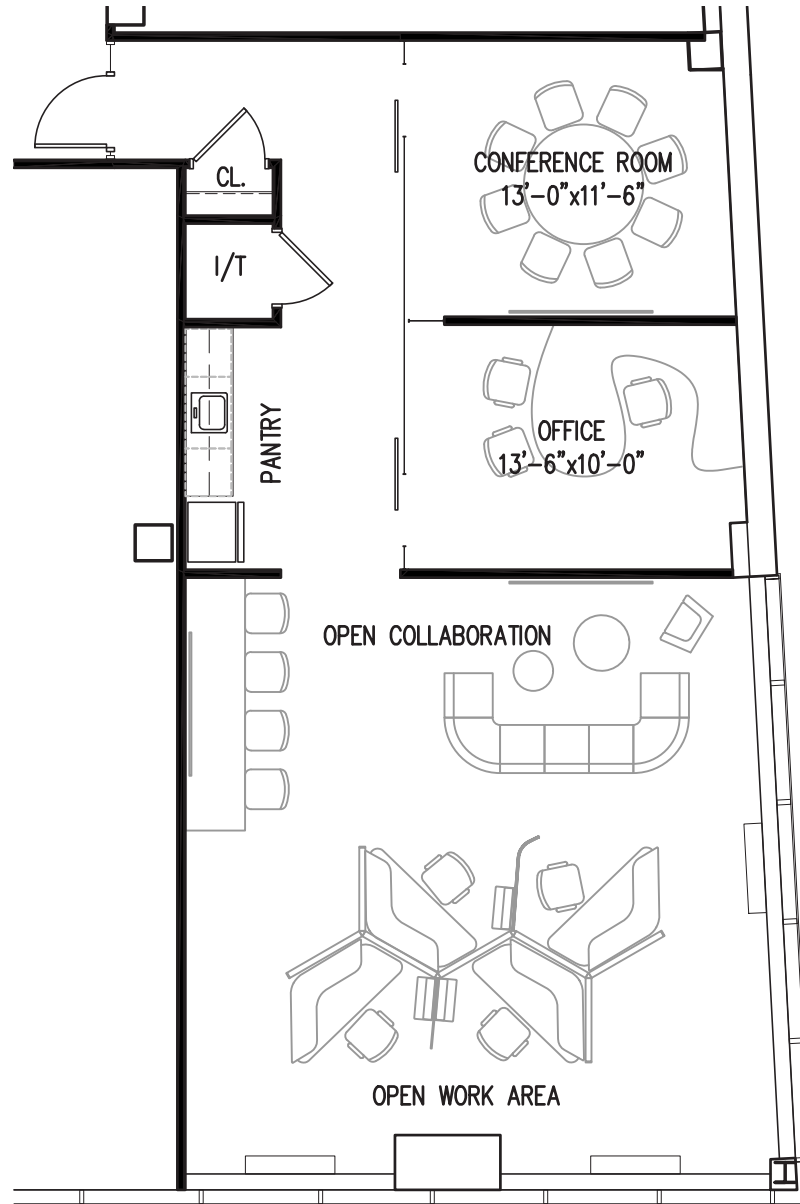
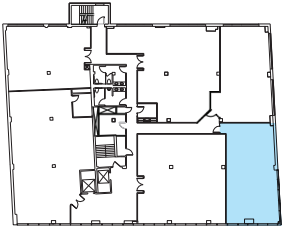
Existing Condition



150 Grand Street
Floor 3 | Suite 301
1,563 SF

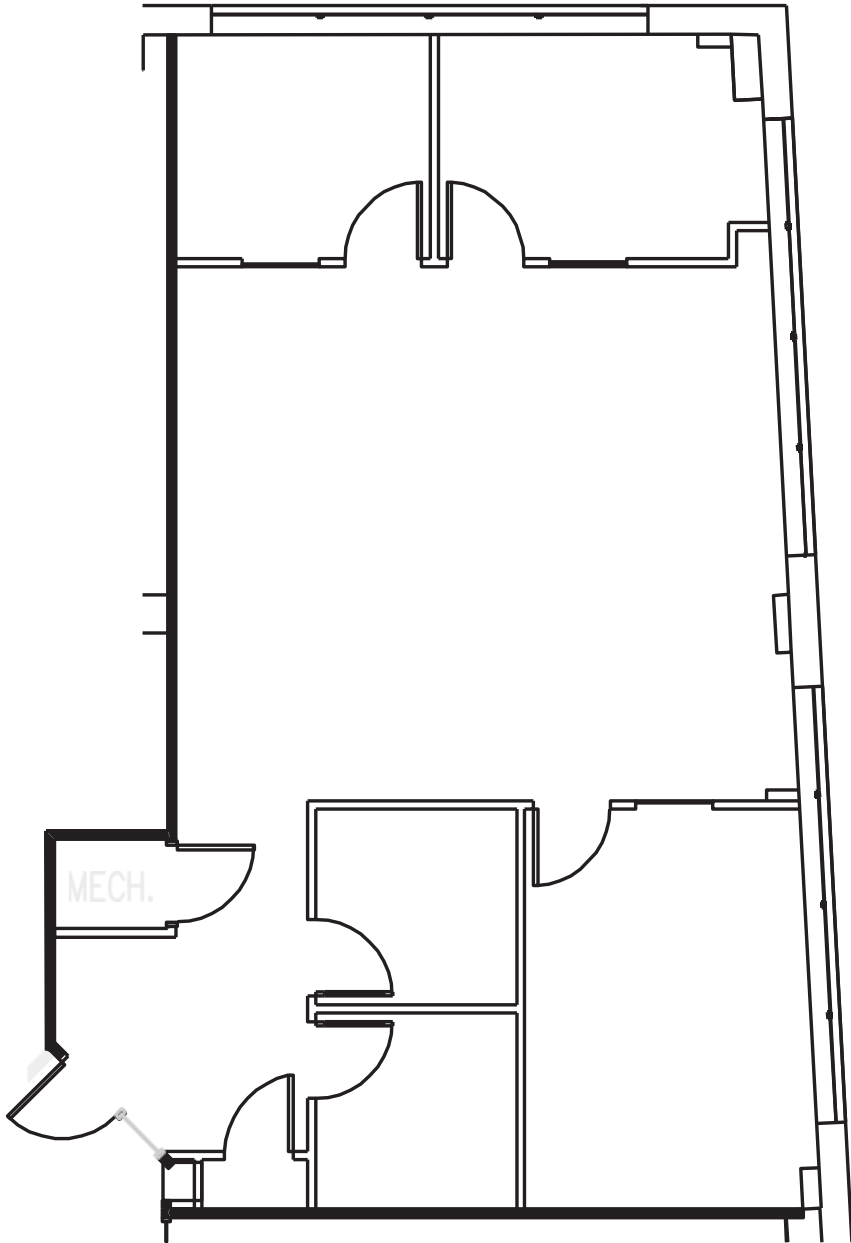
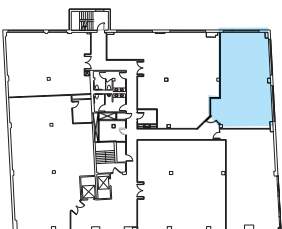


150 Grand Street
Floor 3 | Suite 301
1,563 SF

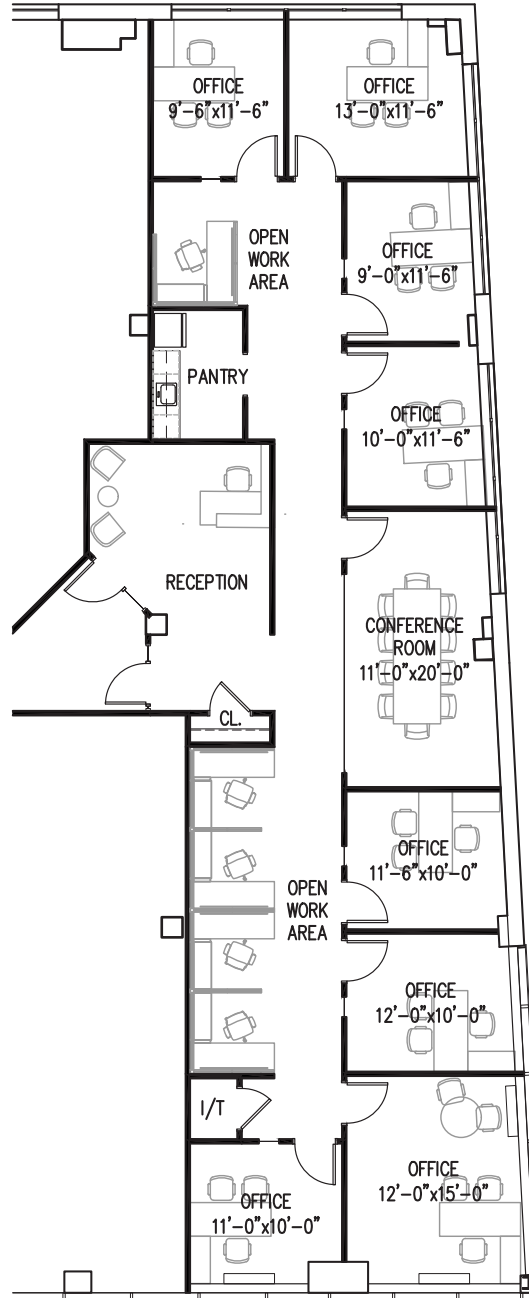
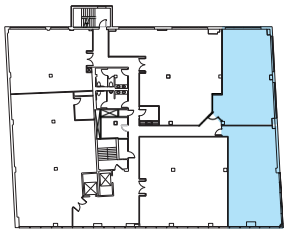


**150 Grand Street
Floor 3 | Suite 303
1,600 SF**

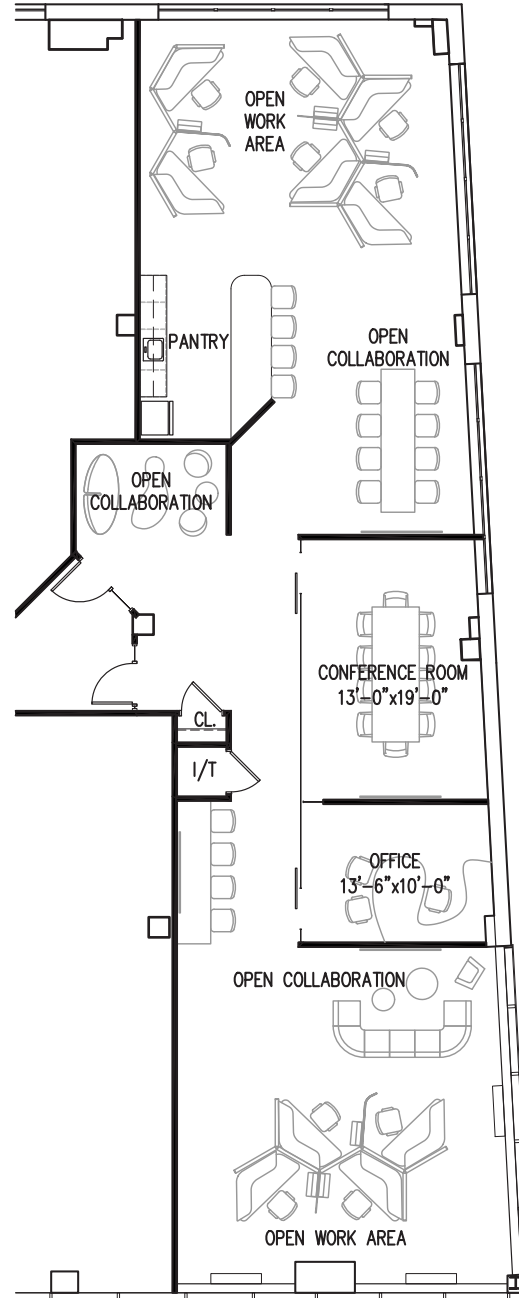
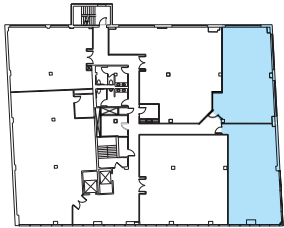
Existing Condition



150 Grand Street
Floor 3 | Suites 301 + 303
3,163 SF

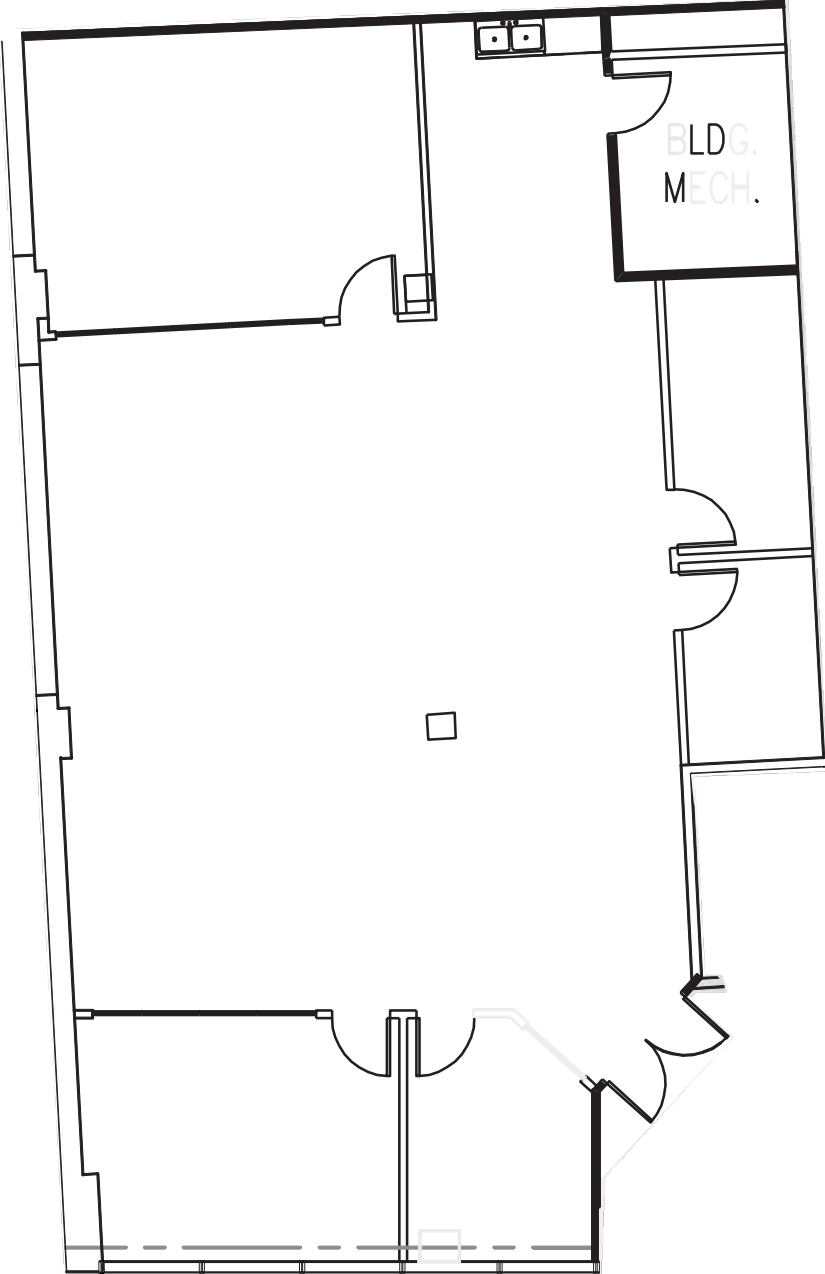
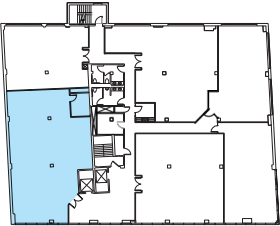


150 Grand Street
Floor 3 | Suites 301 + 303
3,163 SF



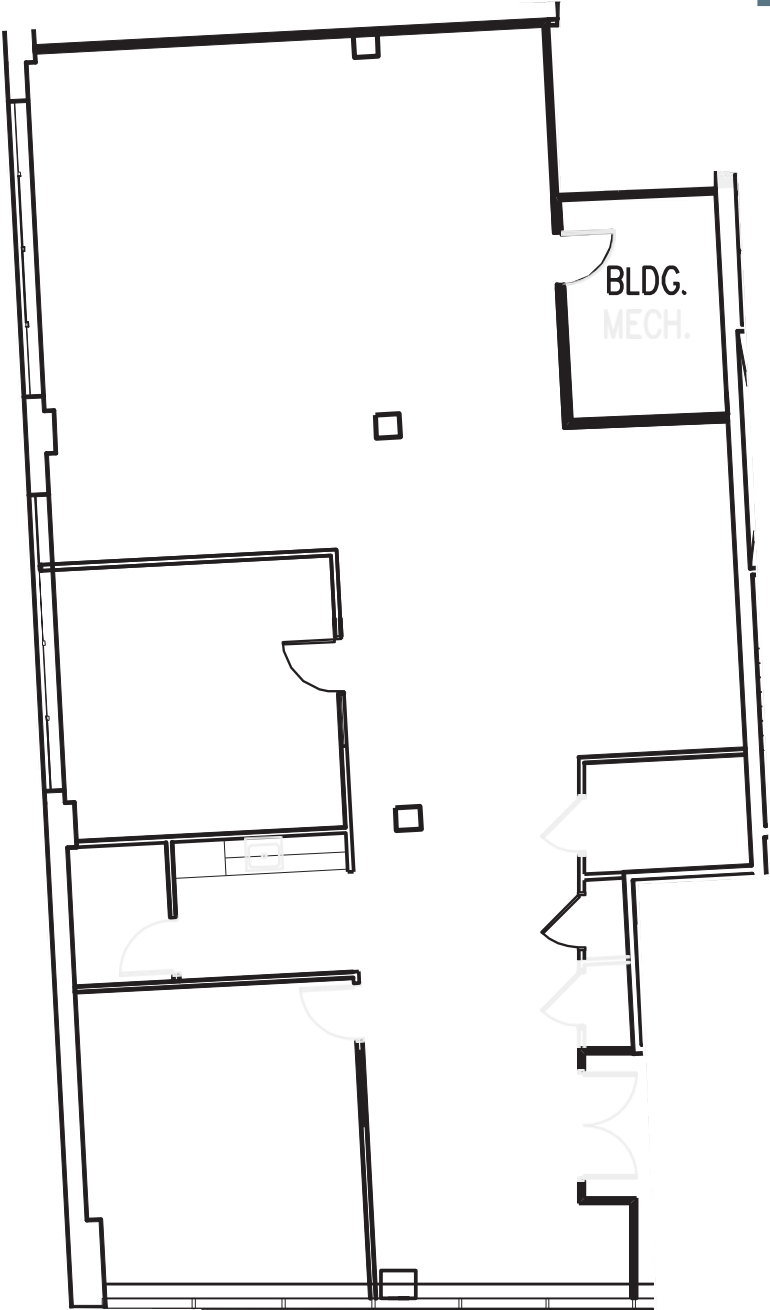
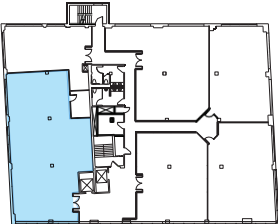
**150 Grand Street
Floor 3 | Suite 304
2,836 SF**

Existing Condition



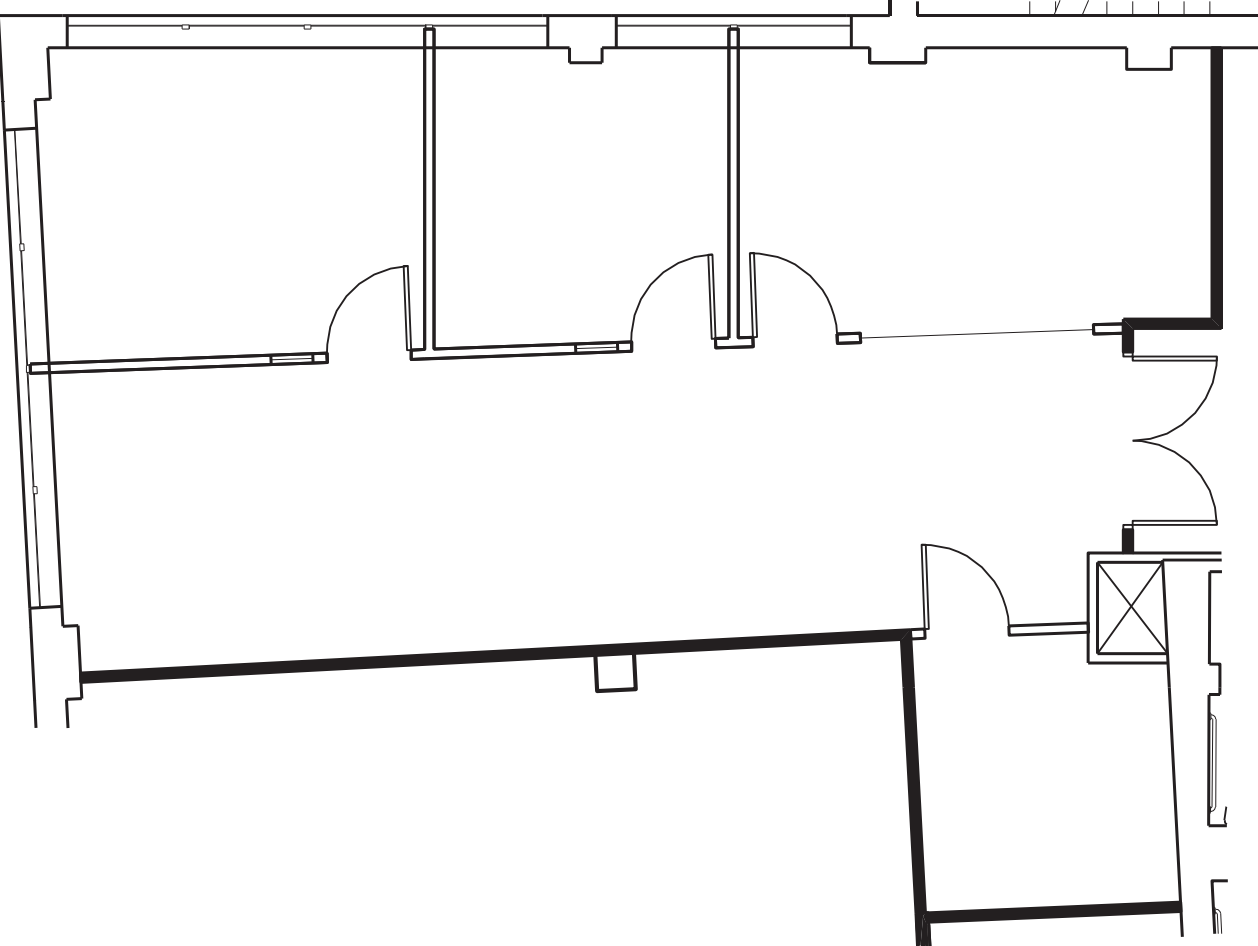
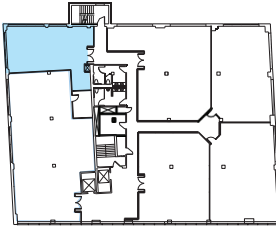
**150 Grand Street
Floor 4 | Suite 400
3,261 SF**

Existing Condition

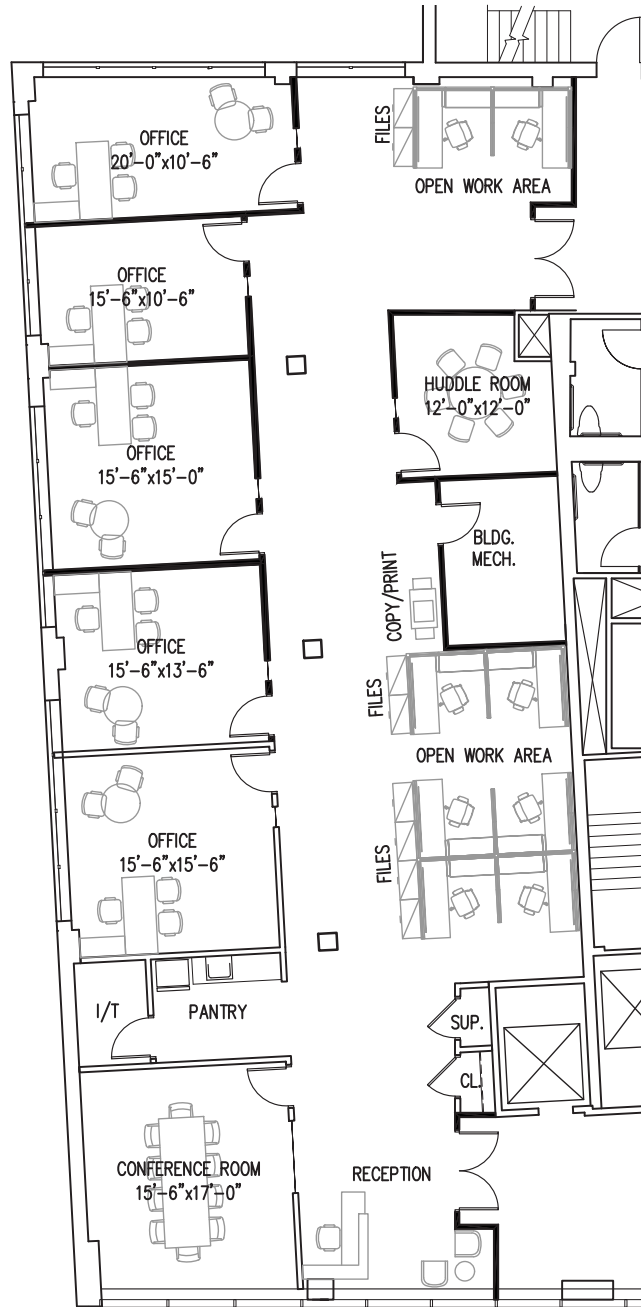
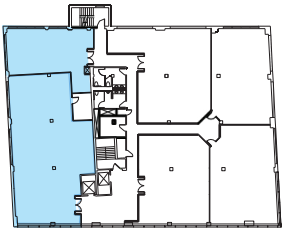


150 Grand Street
Floor 4 | Suite 401
1,474 SF

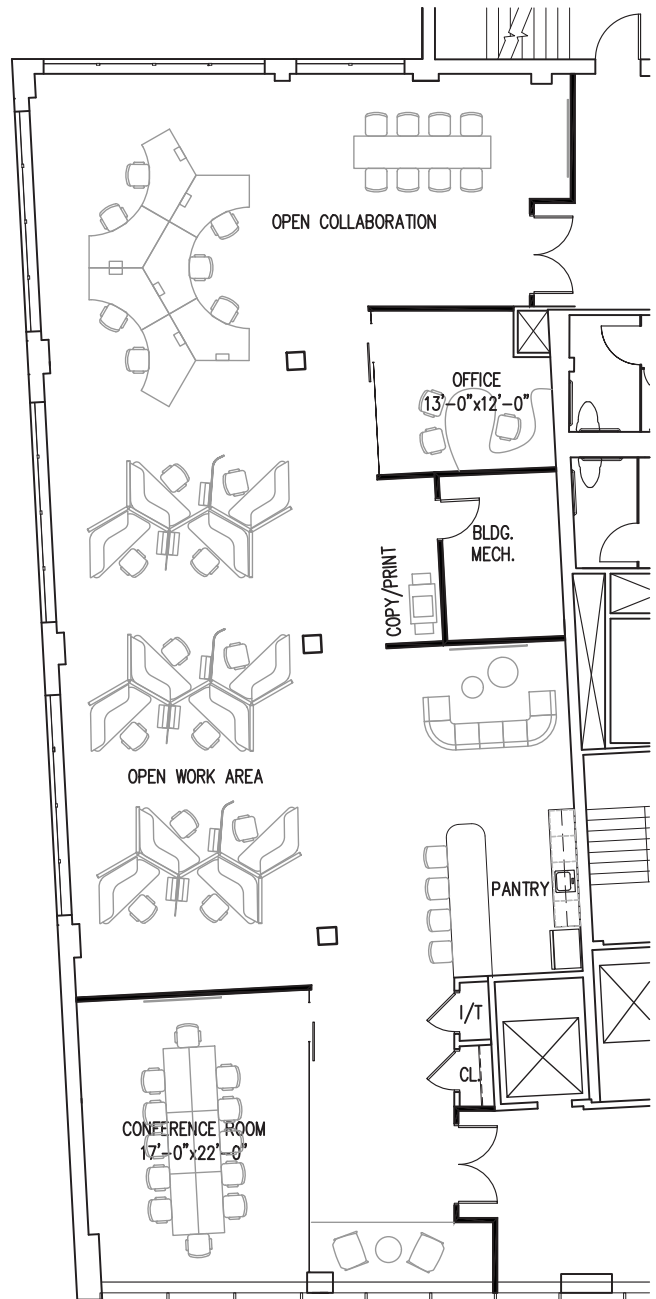
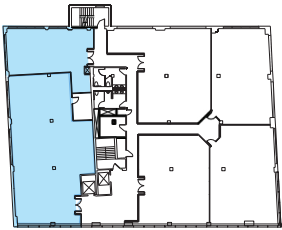
Existing Condition



150 Grand Street
Floor 4 | Suites 400 + 401
4,735 SF

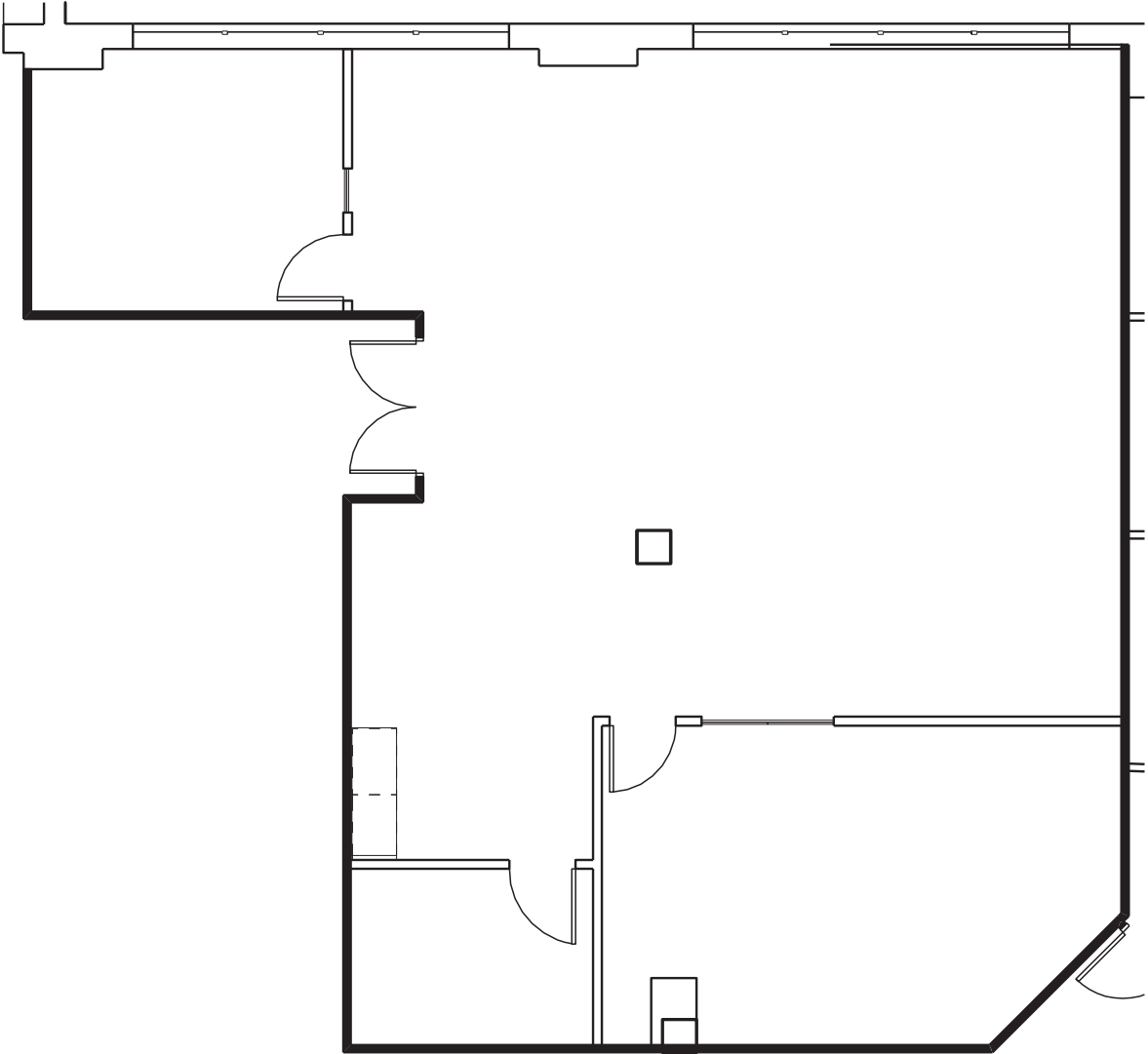
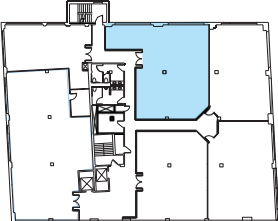


150 Grand Street
Floor 4 | Suites 400 + 401
4,735 SF



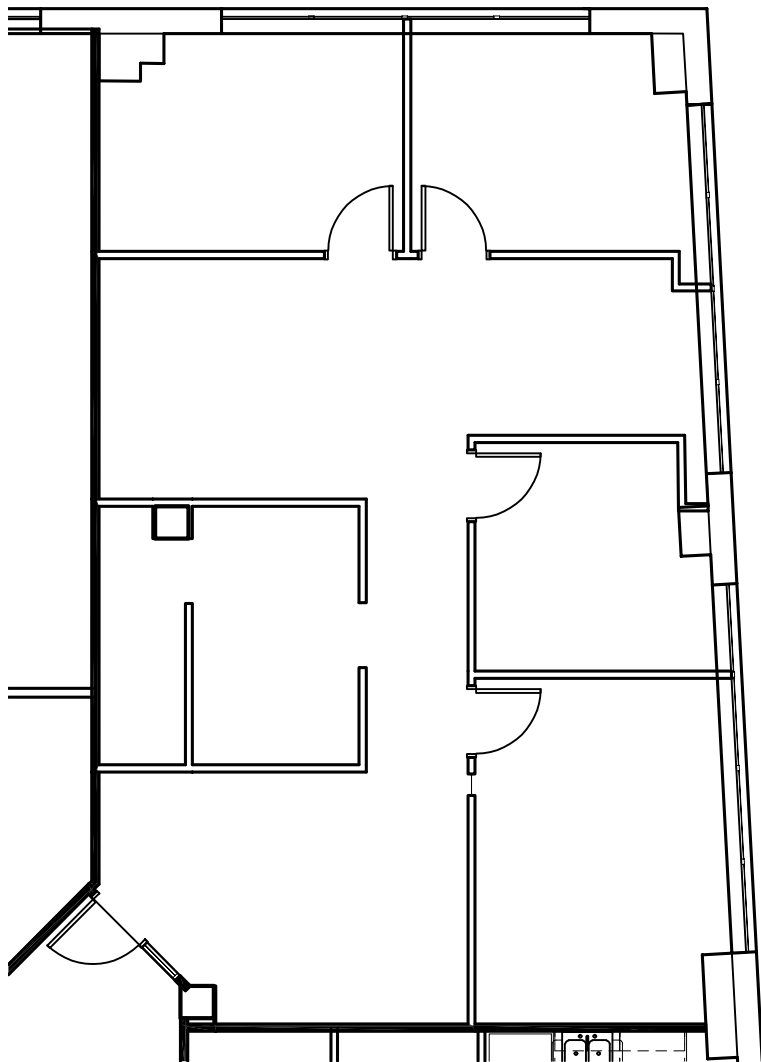
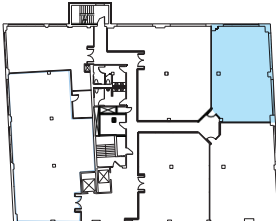
**150 Grand Street
Floor 4 | Suite 402
2,306 SF**

Existing Condition

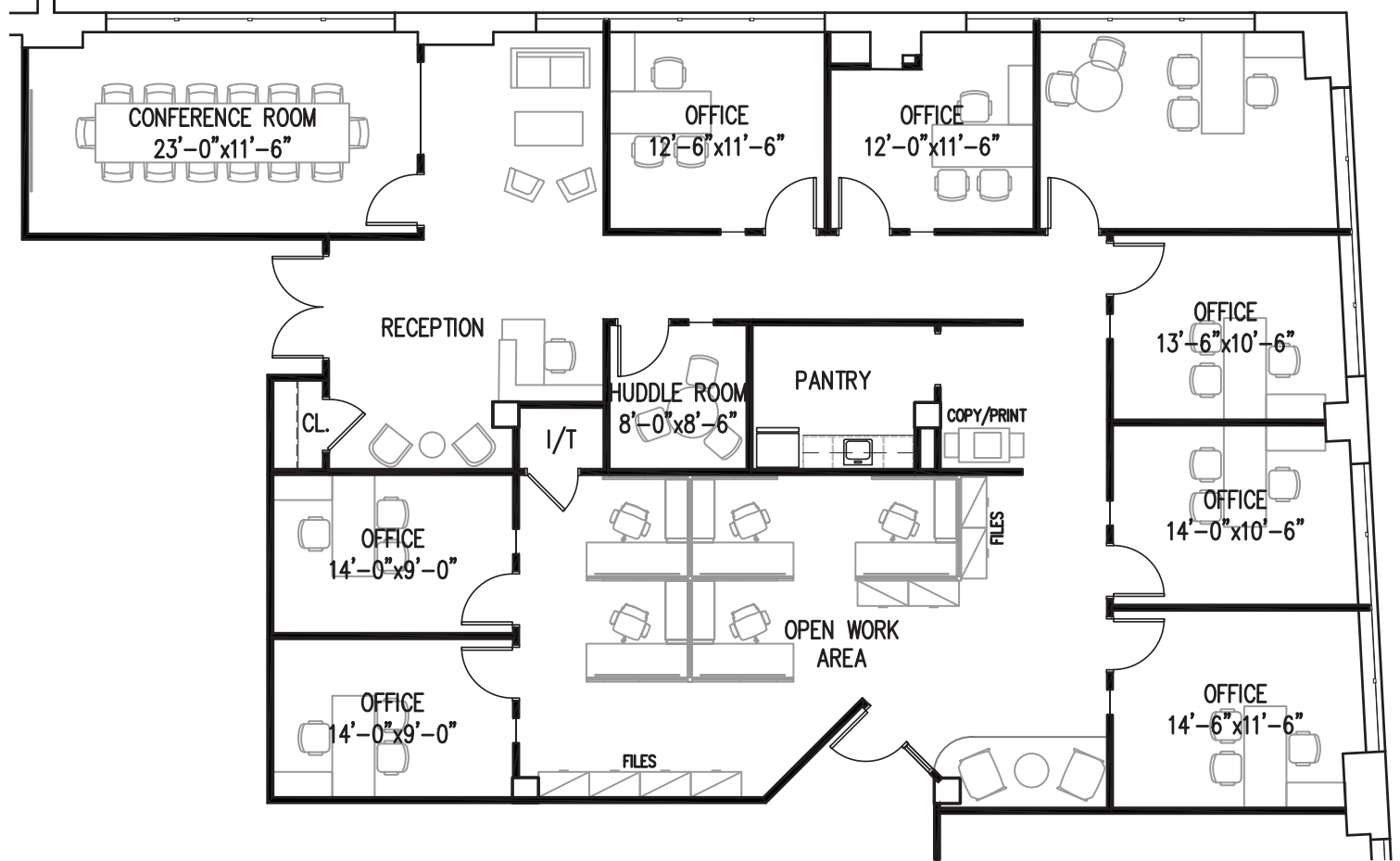
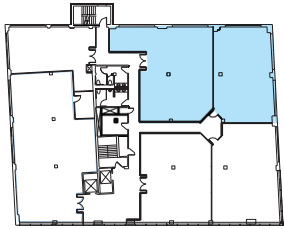


150 Grand Street
Floor 4 | Suite 403
1,780 SF

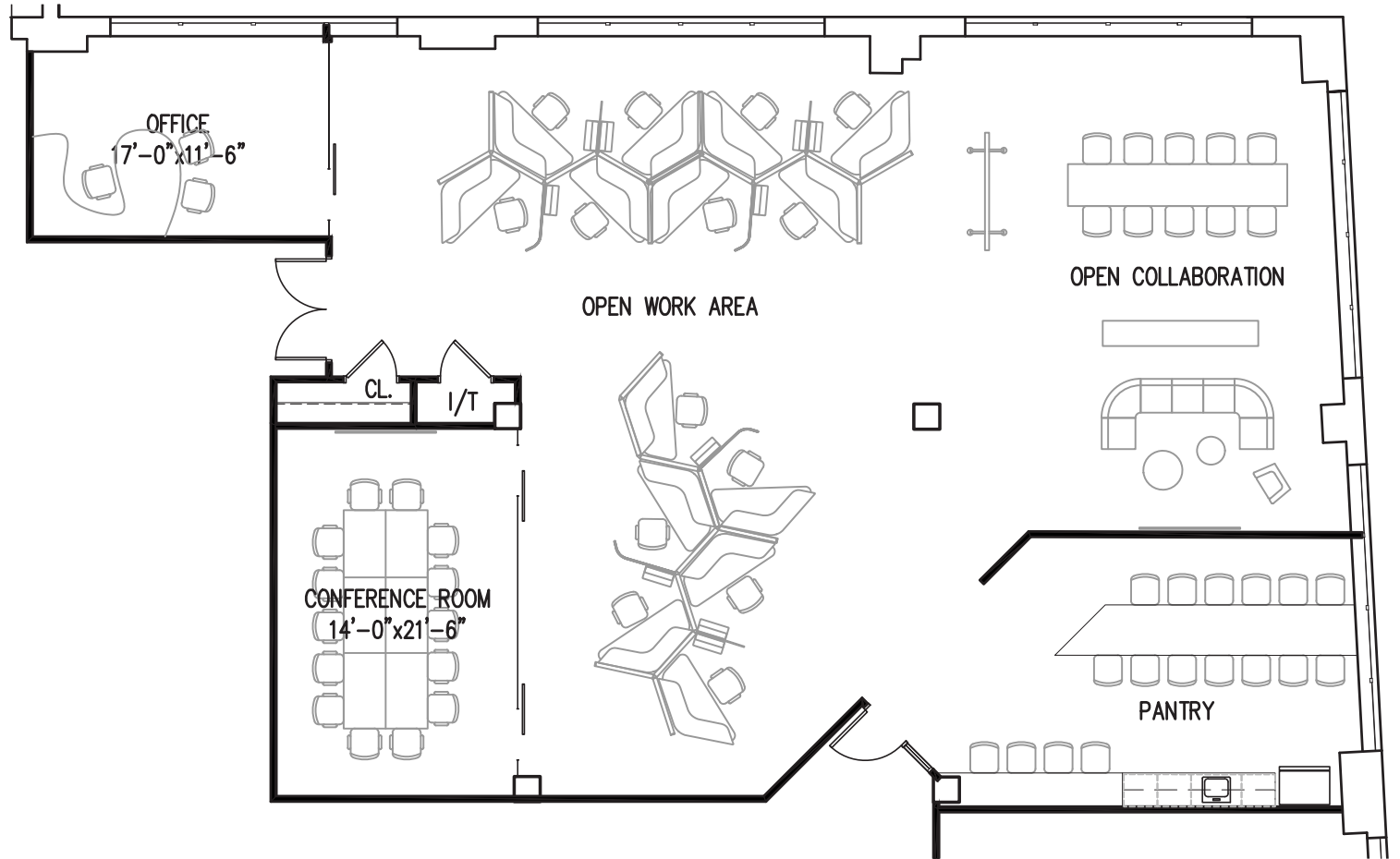
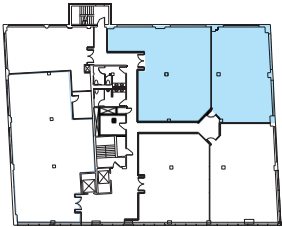
Existing Condition



150 Grand Street
Floor 4 | Suites 402 + 403
4,086 SF

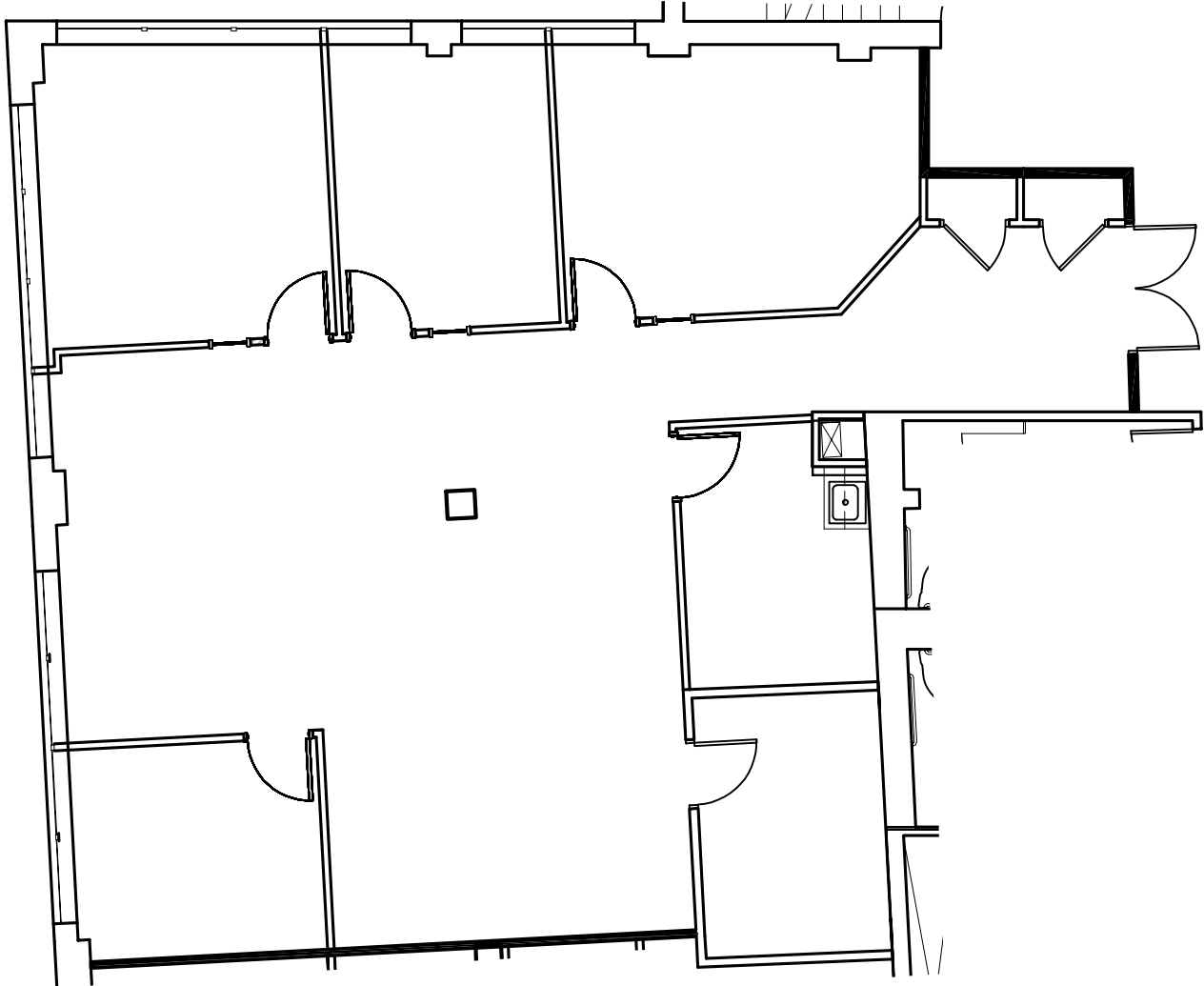
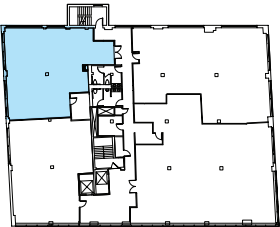


150 Grand Street
Floor 4 | Suites 402 + 403
4,086 SF



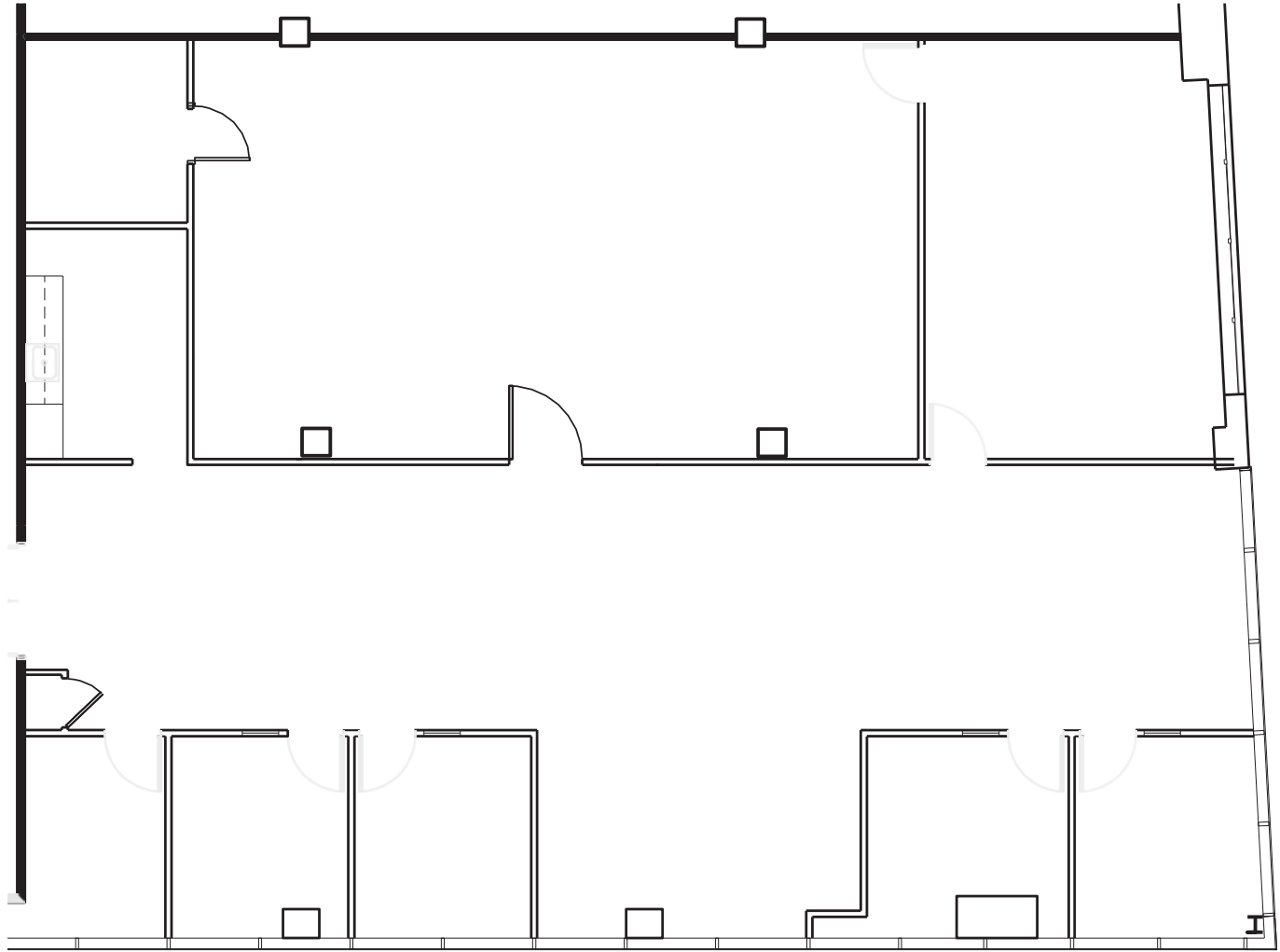
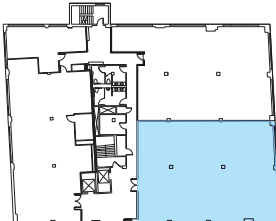
**150 Grand Street
Floor 5 | Suite 501
2,125 SF**

Existing Condition



150 Grand Street
Floor 6 | Suite 605
4,356 SF

Existing Condition



150 Grand Street

White Plains, NY

Robert Lella

Senior Vice President

914 439 4597

robert.lella@colliers.com

Craig S. Ruoff

Executive Vice President

914 441 7688

craig.ruoff@colliers.com

Daniel Mundle

Associate

203 543 2872

daniel.mundle@colliers.com



COLLIERS INTERNATIONAL CT, LLC
1055 WASHINGTON BOULEVARD
STAMFORD, CT 06901

No representation is made as to the accuracy of the information furnished herein and same is submitted subject to errors, omissions, change of prices, rental, or other conditions, prior sale, lease, sublease, and/or withdrawal without notice. While every attempt is made to ensure accuracy, the floor plan(s) is for guidance only. The measurements, dimensions, specifications, and other data shown are approximate and may not be to scale. We assume no responsibility for the accuracy of the floor plan(s) or for any action taken in reliance thereon. The floor plan(s) do not create any representation, warranty or contract. All parties should consult a professional, such as an architect, to verify the information contained herein. The furnishing of this information shall not be deemed a hiring. A commission in accordance with our principal's schedule of rates and conditions will be paid to the procuring Broker who executes our or our principal's brokerage agreement, subject to a fully consummated transaction upon terms and conditions acceptable to our principal.
Colliers International CT, LLC