

FOR LEASE

428 N Craig Street

Pittsburgh, PA 15213

Brad Totten

Principal, Managing Director

D 412 944 2132

brad.totten@avisonyoung.com

Ty Gradwell

Associate

D 412 944 2134

ty.gradwell@avisonyoung.com

Avison Young - Pittsburgh | Four PPG Place, Suite 300 | Pittsburgh, PA 15222









© 2024. Avison Young - Pittsburgh. Information contained herein was obtained from sources deemed reliable and, while thought to be correct, have not been verified. Avison Young - Pittsburgh does not guarantee the accuracy or completeness of the information presented, nor assumes any responsibility or liability for any errors or omissions therein.

The Dykema Building

**AVISON
YOUNG**



Property Highlights

-  6,500 SF on 3rd floor currently available
-  3rd floor is fully built out as office/tech space
-  4 stories total (3 stories built out with lower level as covered parking/drive-in garage)
-  28 surface spaces available
-  Close proximity to Carnegie Mellon university, University of Pittsburgh, Carlow University, hospitals, restaurants, and local retail stores
-  11 minutes to Downtown Pittsburgh
-  35 minutes to Pittsburgh International Airport
-  Ready for Immediate Occupancy

Offering Summary

Lease Rate	Negotiable
Available SF	6,500 SF
Building Size	26,136 SF

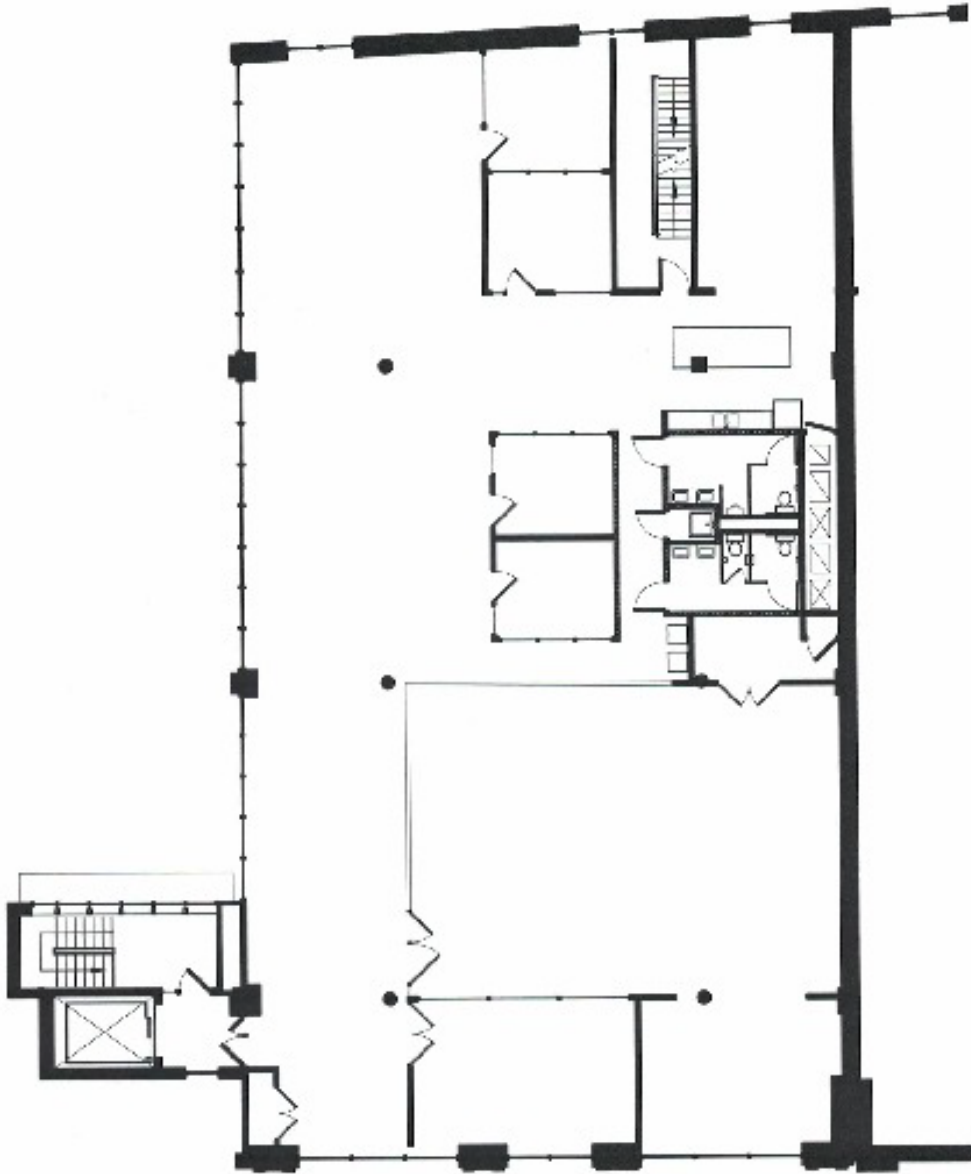
Demographics	1 Mile	3 Miles	5 Miles
Total Households	16,280	87,668	166,873
Total Population	36,524	194,675	374,622
Average HH Income	\$50,585	\$56,504	\$55,322

For further information

Brad Totten
 +1 412 944 2132
 brad.totten@avisonyoung.com

Ty Gradwell
 +1 412 944 2134
 ty.gradwell@avisonyoung.com

avisonyoung.com



3rd Floor

6,528 square feet

**For further
information**

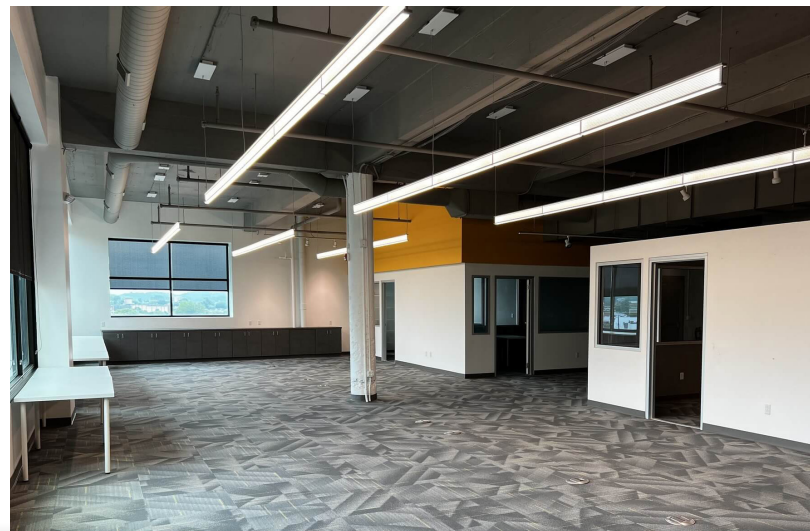
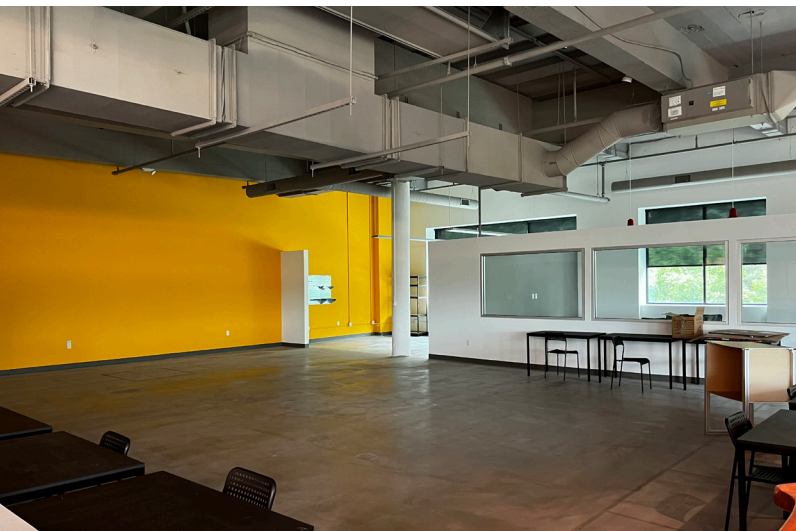
Brad Totten
+1 412 944 2132
brad.totten@avisonyoung.com

Ty Gradwell
+1 412 944 2134
ty.gradwell@avisonyoung.com

avisonyoung.com

Office space for lease

428 North Craig Street

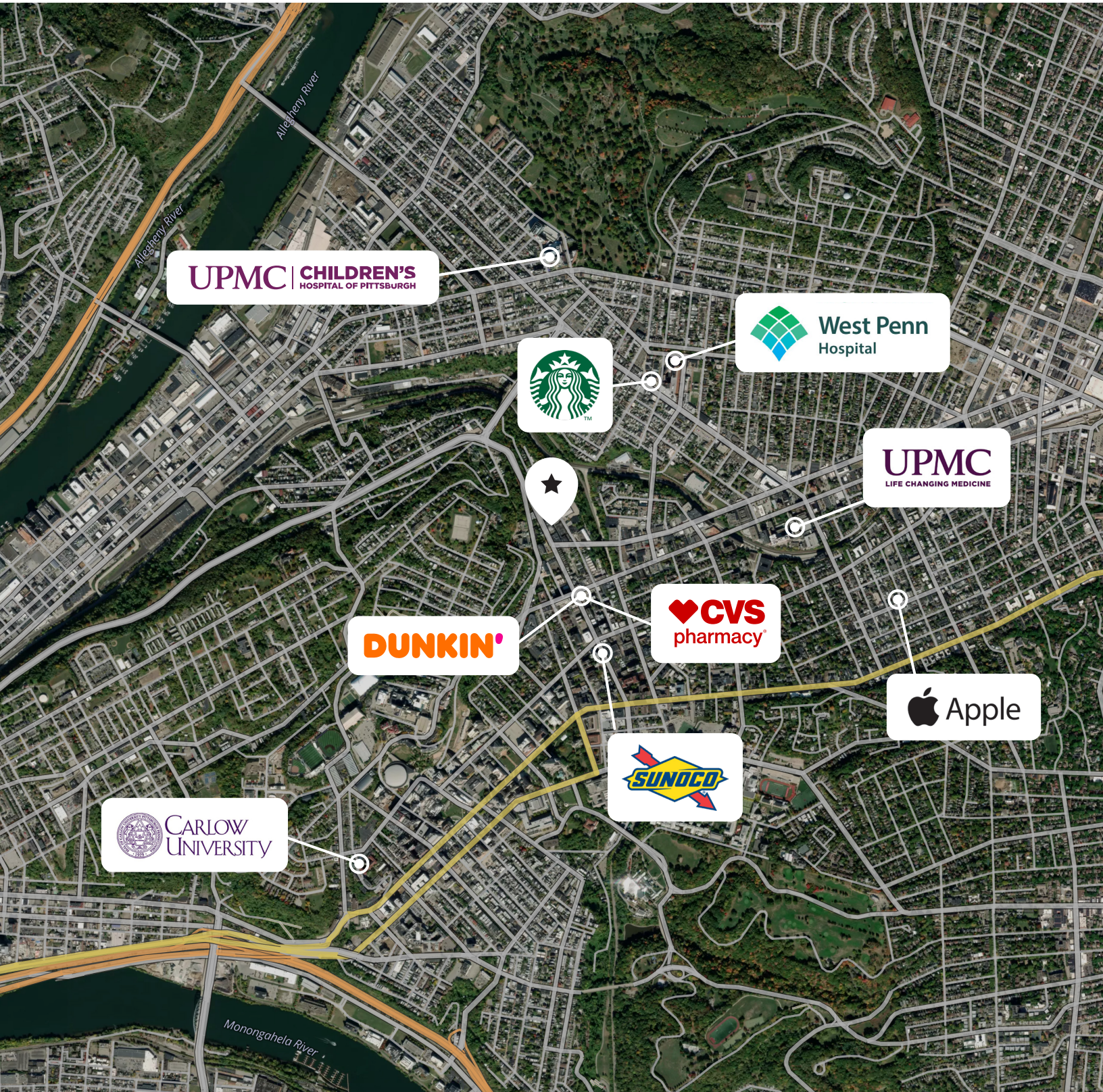


For further information

Brad Totten
+1 412 944 2132
brad.totten@avisonyoung.com

Ty Gradwell
+1 412 944 2134
ty.gradwell@avisonyoung.com

avisonyoung.com



For further information

Brad Totten
+1 412 944 2132
brad.totten@avisonyoung.com

Ty Gradwell
+1 412 944 2134
ty.gradwell@avisonyoung.com

avisonyoung.com