

# SUDLEY NORTH BUSINESS CENTER

Donegan Dr & Ashton Ave, Manassas, VA 20109

Building C - Jackson Building  
7699-7845 Ashton Avenue



Building B - Lee Building  
7848-7998 Donegan Drive



Building A - Grant Building  
7698-7794 Donegan Drive



## FOR INFORMATION:

Cole Spalding	703.918.0230	cole.spalding@nmrk.com
Nick Kuhn	571.215.9213	nicholas.kuhn@nmrk.com
Larry FitzGerald	703.918.0221	larry.fitzgerald@nmrk.com

# NEWMARK

1420 Spring Hill Road, Suite 600, McLean, VA 22102

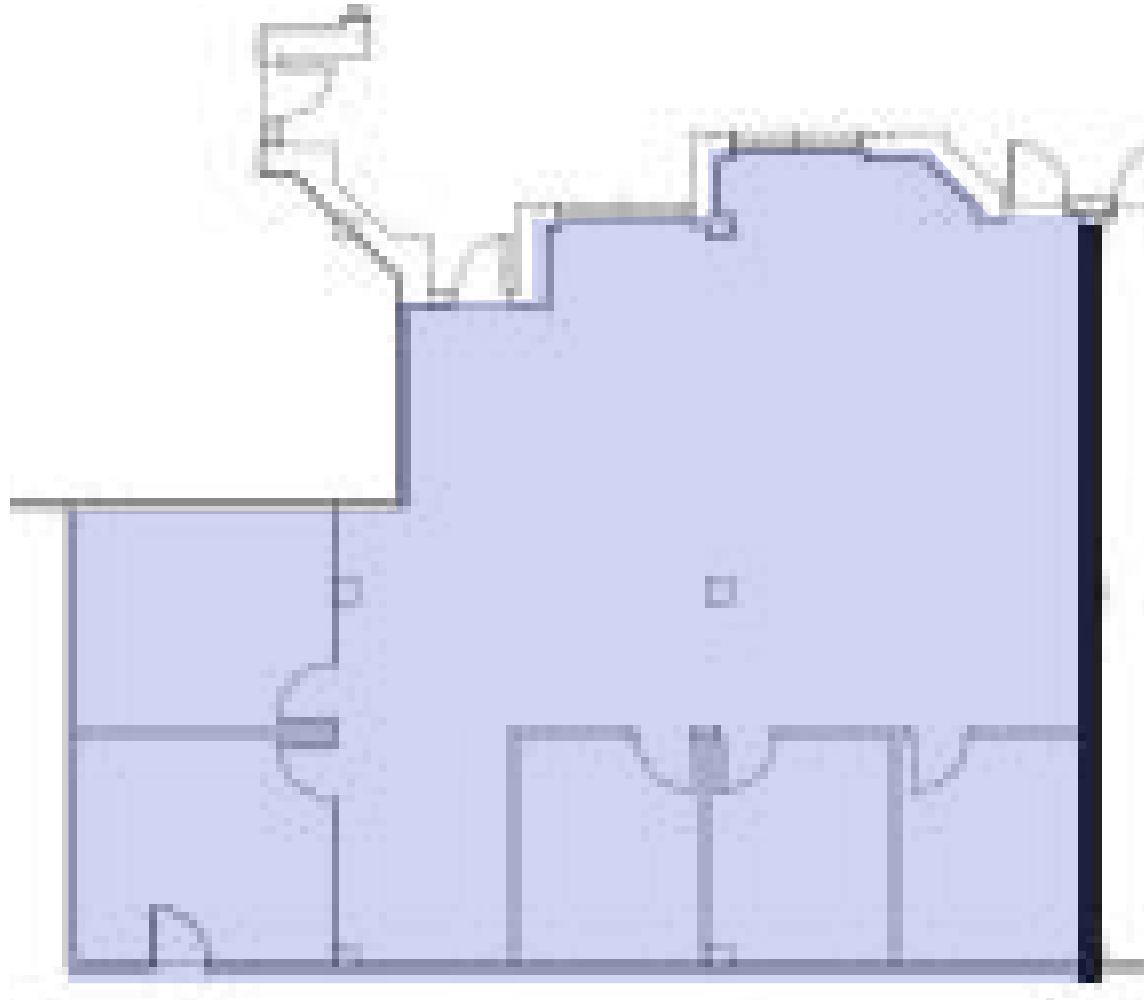
Procuring broker shall only be entitled to a commission calculated in accordance with the rates approved by our principal only if such procuring broker executes a brokerage agreement acceptable to us and our principal and the conditions as set forth in the brokerage agreement are fully and unconditionally satisfied. Although all information furnished regarding property for sale, rental, or financing is from sources deemed reliable, such information has not been verified and no express representation is made nor is any to be implied as to the accuracy thereof and it is submitted subject to errors, omissions, change of price, rental or other conditions, prior sale, lease or financing, or withdrawal without notice and to any special conditions imposed by our principal.

# SUDLEY NORTH BUSINESS CENTER

Donegan Dr & Ashton Ave, Manassas, VA 20109

## FEATURES:

- Close proximity to I-66, Routes 29 and 28, and 234
- Campus-style business park within walking distance to banks, restaurants, health club/gym and shopping
- Across from the Bull Run Shopping Center
- Signage available for select suites
- Free surface parking at a ratio of 3.6 spaces per 1,000 SF leased
- Lidl Grocery Store now open!
- Rental rate \$23.00 PSF, full service



**Lee Building - Suite 7872**  
**2,266 SF**

## FOR INFORMATION:

Cole Spalding	703.918.0230	cole.spalding@nmrk.com
Nick Kuhn	571.215.9213	nicholas.kuhn@nmrk.com
Larry FitzGerald	703.918.0221	larry.fitzgerald@nmrk.com

# NEWMARK

1420 Spring Hill Road, Suite 600, McLean, VA 22102

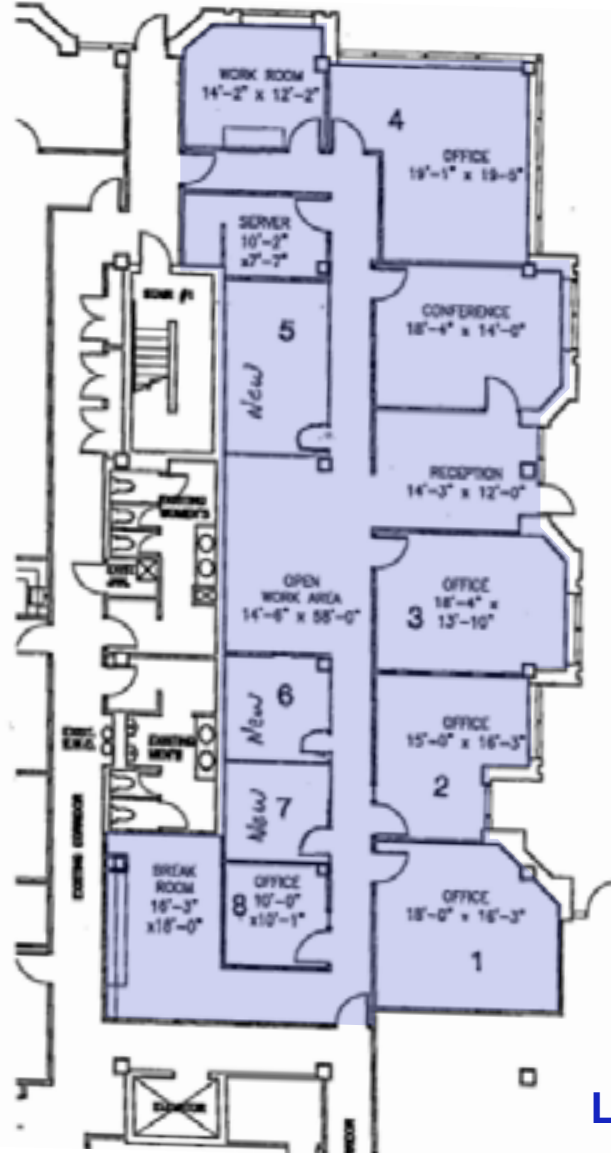
Procuring broker shall only be entitled to a commission calculated in accordance with the rates approved by our principal only if such procuring broker executes a brokerage agreement acceptable to us and our principal and the conditions as set forth in the brokerage agreement are fully and unconditionally satisfied. Although all information furnished regarding property for sale, rental, or financing is from sources deemed reliable, such information has not been verified and no express representation is made nor is any to be implied as to the accuracy thereof and it is submitted subject to errors, omissions, change of price, rental or other conditions, prior sale, lease or financing, or withdrawal without notice and to any special conditions imposed by our principal.

# SUDLEY NORTH BUSINESS CENTER

Donegan Dr & Ashton Ave, Manassas, VA 20109

## FEATURES:

- Close proximity to I-66, Routes 29 and 28, and 234
- Campus-style business park within walking distance to banks, restaurants, health club/gym and shopping
- Across from the Bull Run Shopping Center
- Signage available for select suites
- Free surface parking at a ratio of 3.6 spaces per 1,000 SF leased
- Lidl Grocery Store now open!
- Rental rate \$23.00 PSF, full service



**Lee Building - Suite 7864**  
**3,927 SF**

## FOR INFORMATION:

Cole Spalding	703.918.0230	cole.spalding@nmrk.com
Nick Kuhn	571.215.9213	nicholas.kuhn@nmrk.com
Larry FitzGerald	703.918.0221	larry.fitzgerald@nmrk.com

# NEWMARK

1420 Spring Hill Road, Suite 600, McLean, VA 22102

Procuring broker shall only be entitled to a commission calculated in accordance with the rates approved by our principal only if such procuring broker executes a brokerage agreement acceptable to us and our principal and the conditions as set forth in the brokerage agreement are fully and unconditionally satisfied. Although all information furnished regarding property for sale, rental, or financing is from sources deemed reliable, such information has not been verified and no express representation is made nor is any to be implied as to the accuracy thereof and it is submitted subject to errors, omissions, change of price, rental or other conditions, prior sale, lease or financing, or withdrawal without notice and to any special conditions imposed by our principal.