

# Office & Medical Space For Lease

3,750 SF and 2,500 SF available immediately

19250 Bagley Road | Middleburg Heights, Ohio 44130

## Contact Us

**Daniel Mayer**

Vice President

+1 216 363 6437

[daniel.mayer@cbre.com](mailto:daniel.mayer@cbre.com)

**Olivia Reichenbach**

Associate

+ 1 440 781 2811

[olivia.reichenbach@cbre.com](mailto:olivia.reichenbach@cbre.com)





## Office & Medical Space For Lease

19250 Bagley Road | Middleburg Heights, Ohio 44130

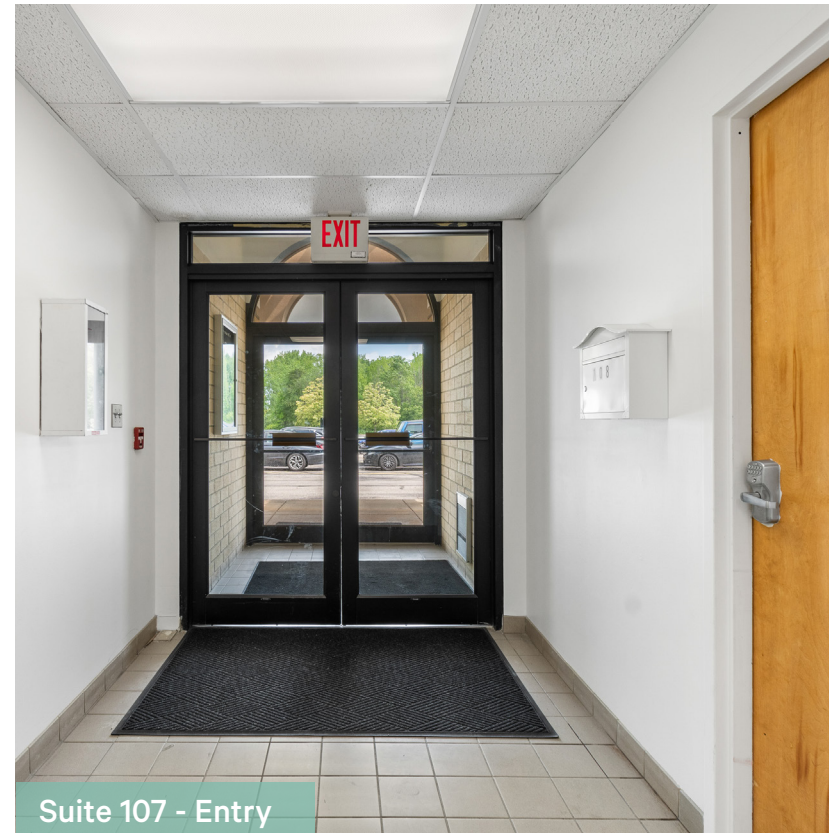
For Lease

# Property Highlights

- + **Suite 107 (3,750 SF):** Office suite with direct exterior entrance featuring a great window line providing an abundance of natural light, 3 private offices, open bullpen space, and conference room.
- + **Suite 203 (2,500 SF):** Office suite with direct exterior entrance with reception, waiting room, 2 private offices, and 4 larger rooms.
- + Single story medical and office complex anchored by prominent co-tenants including The Surgery Center (Southwest General) and Allegiance Ohio Imaging.
- + Prominent building signage available
- + Quiet natural landscape with Lake Abram Metropark Reservation surrounding the property
- + Located half a mile from Southwest General Hospital, minutes from I-71 with convenient access to I-80 (turnpike) and I-480 providing significant population capture within 15-minute drive-time of 222,813 people.
- + **Lease Rate:** Contact Broker for Pricing



Suite 107 - Workspace



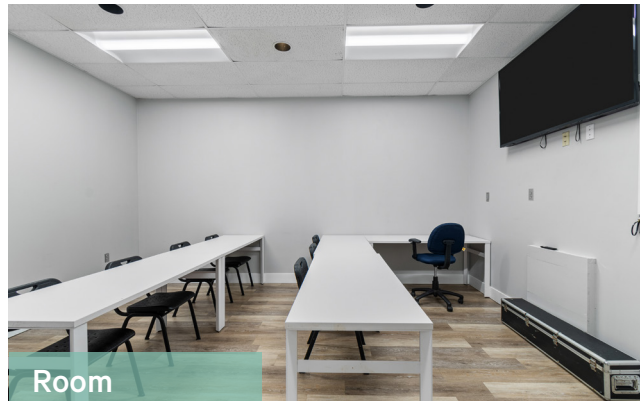
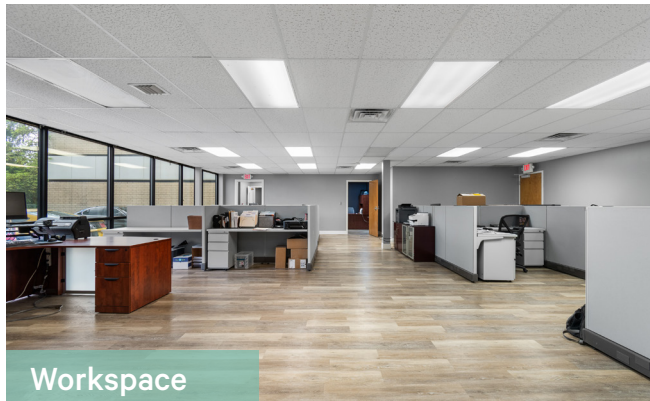
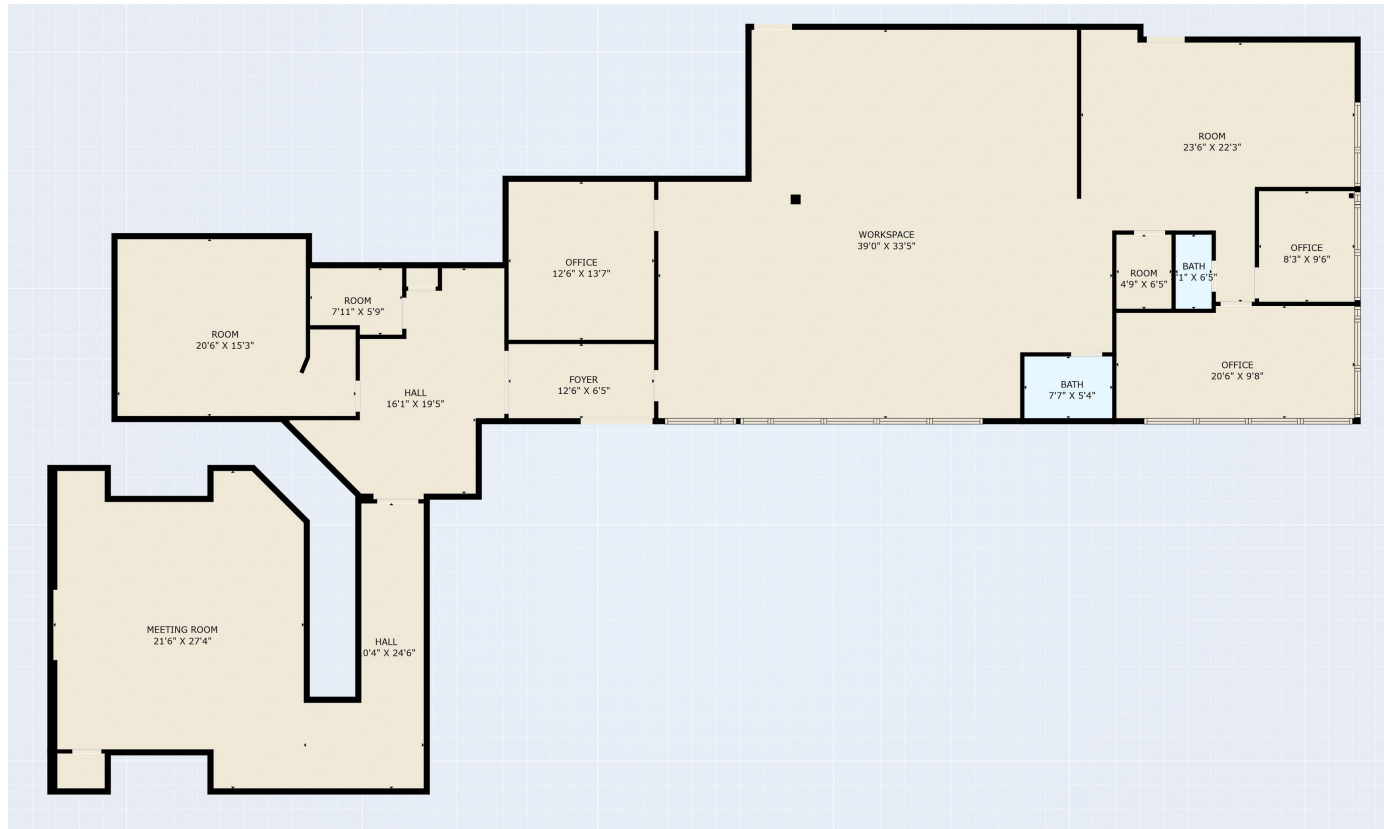
Suite 107 - Entry

## Office & Medical Space For Lease

19250 Bagley Road | Middleburg Heights, Ohio 44130

For Lease

# Suite 107 (3,750 SF) Floor Plan & Interior Images

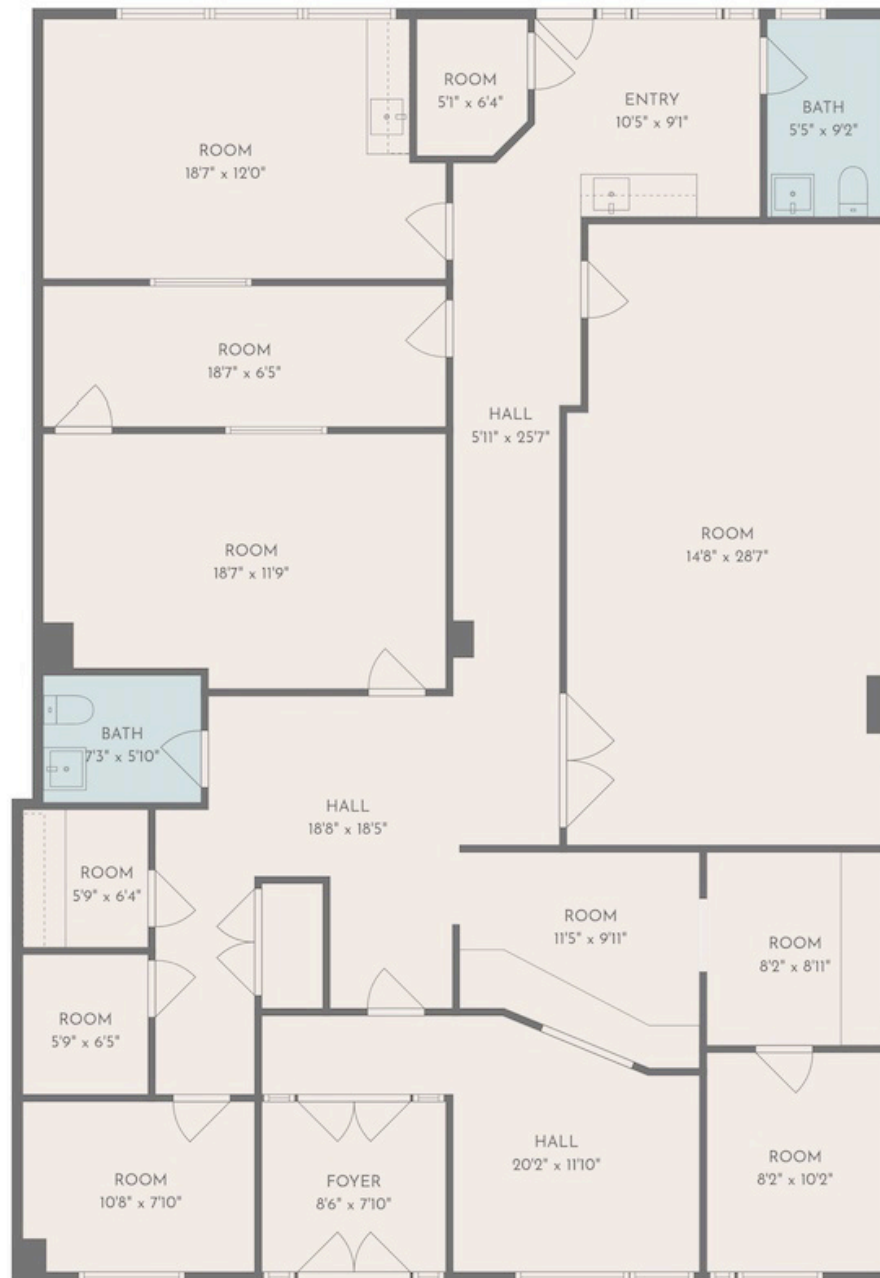


## Office & Medical Space For Lease

19250 Bagley Road | Middleburg Heights, Ohio 44130

For Lease

# Suite 203 (2,500 SF) Floor Plan



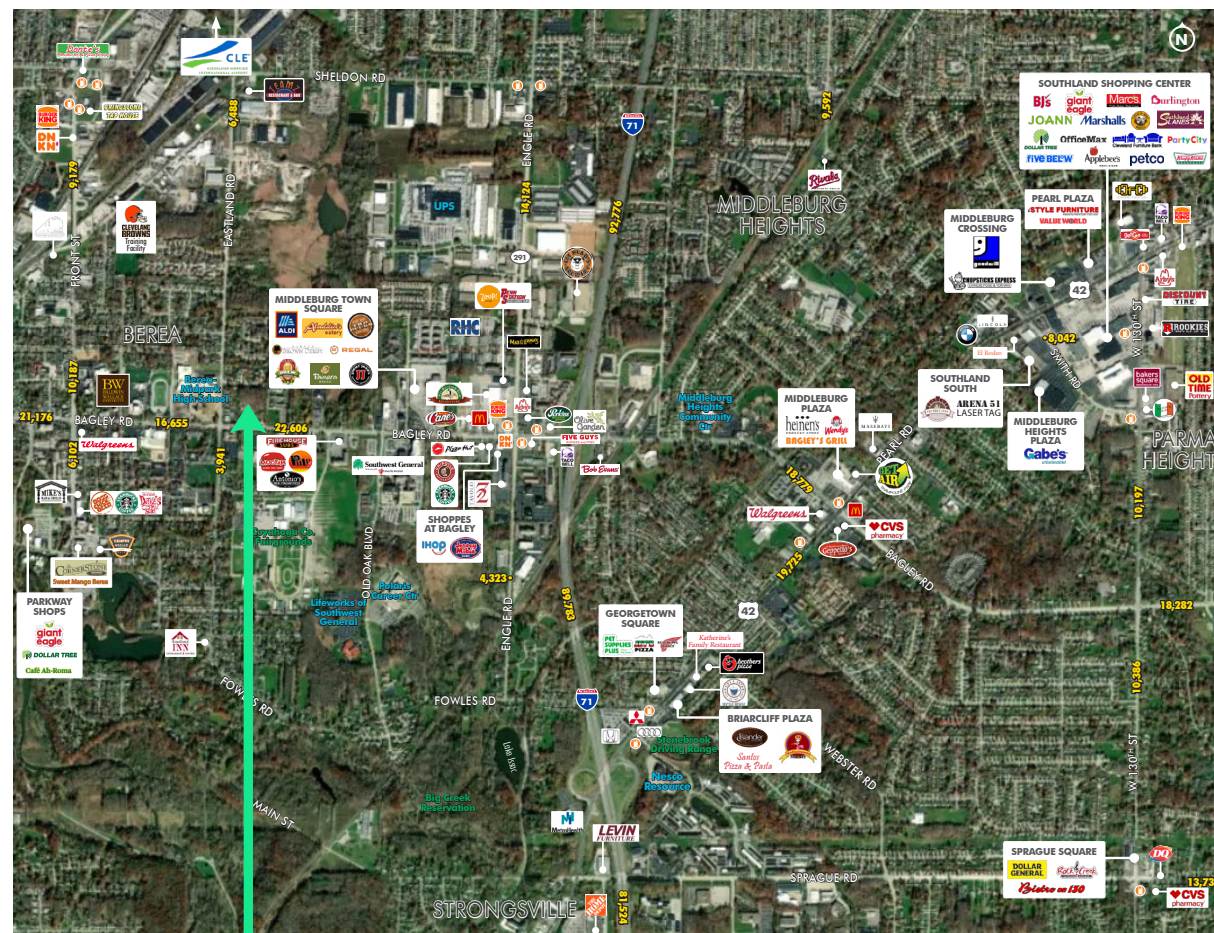
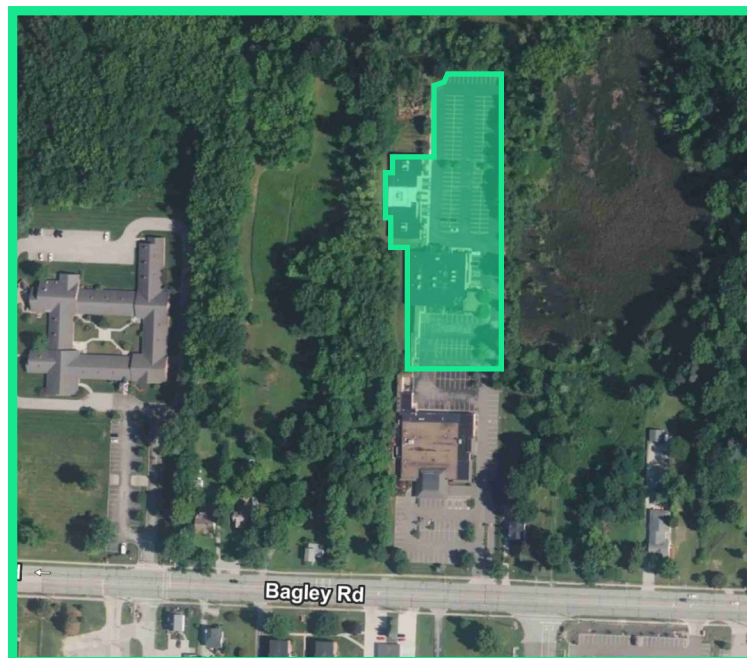


## Office & Medical Space For Lease

19250 Bagley Road | Middleburg Heights, Ohio 44130

For Lease

# Trade Aerial



## Contact Us

**Daniel Mayer**

Vice President

+1 216 363 6437

daniel.mayer@cbre.com

**Olivia Reichenbach**

Associate

+1 440 781 2811

olivia.reichenbach@cbre.com

© 2025 CBRE, Inc. All rights reserved. This information has been obtained from sources believed reliable, but has not been verified for accuracy or completeness. You should conduct a careful, independent investigation of the property and verify all information. Any reliance on this information is solely at your own risk. CBRE and the CBRE logo are service marks of CBRE, Inc. All other marks displayed on this document are the property of their respective owners, and the use of such logos does not imply any affiliation with or endorsement of CBRE. Photos herein are the property of their respective owners. Use of these images without the express written consent of the owner is prohibited.