



**430 W. Main Street**  
Oklahoma City, Oklahoma 73102

**PROPERTY HIGHLIGHTS**

- Within the Downtown Business District
- Store Front Signage Available
- Great for Restaurant/Bar
- TPO Roof Installed 2020
- (3) 5 Ton HVAC Units Installed in 2020

**LOCATION HIGHLIGHTS**

- Close Proximity to Chesapeake Area
- Easy Access to I-35 & I-40
- Located S.E. of the Civic Center & West of Devon Tower
- Streetcar Platform at Sheridan & Hudson



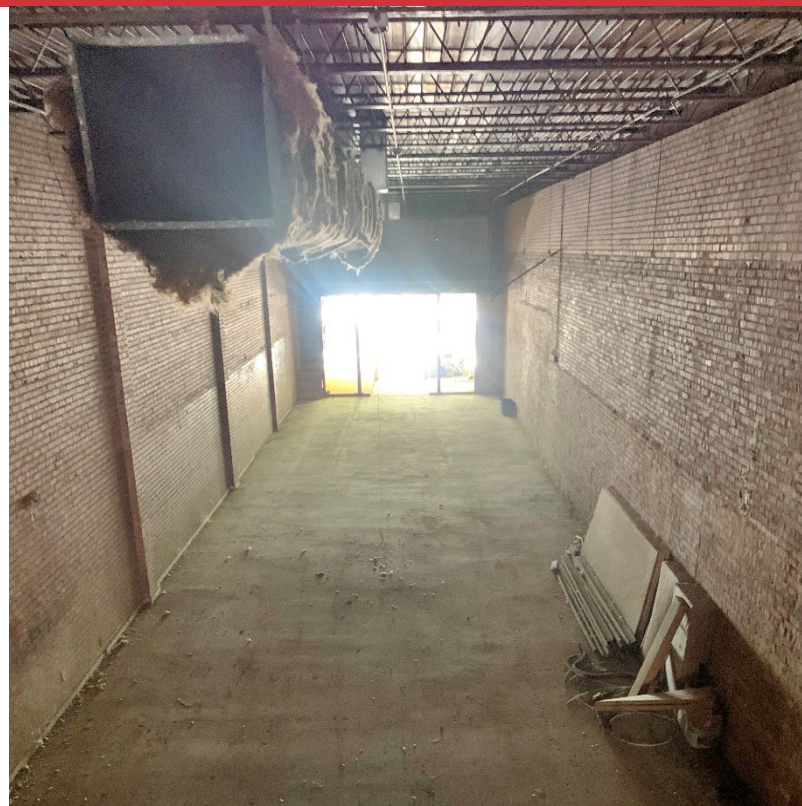
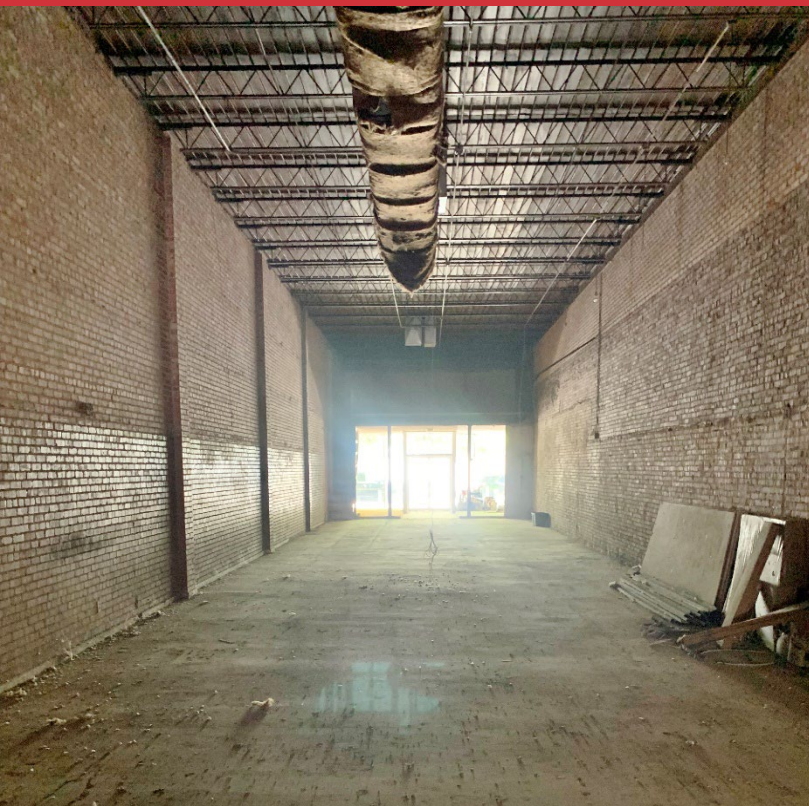
TOTAL SF	<b>3,228 SF</b>
BUILT	<b>1945</b>
ZONED	<b>DBD</b>

**Nathan Wilson**  
**+1 405 760 5327**  
nathan@naisullivangroup.com

**+1 405 840 0600 OFFICE**

4045 N.W. 64<sup>th</sup> Street, Suite 340  
Oklahoma City, OK 73116

[www.naisullivangroup.com](http://www.naisullivangroup.com)



**Nathan Wilson**  
**+1 405 760 5327**  
nathan@naisullivangroup.com

**+1 405 840 0600 OFFICE**

4045 N.W. 64<sup>th</sup> Street, Suite 340  
Oklahoma City, OK 73116

[www.naisullivangroup.com](http://www.naisullivangroup.com)



**Nathan Wilson**  
**+1 405 760 5327**  
nathan@naisullivangroup.com

**+1 405 840 0600 OFFICE**

4045 N.W. 64<sup>th</sup> Street, Suite 340  
Oklahoma City, OK 73116

[www.naisullivangroup.com](http://www.naisullivangroup.com)



Population	1 Mile: 7,910	3 Miles: 83,689	5 Miles: 226,618
Average Household Income	1 Mile: \$45,966	3 Miles: \$33,798	5 Miles: \$36,736
Total Households	1 Mile: 2,793	3 Miles: 31,927	5 Miles: 88,001

**Nathan Wilson**  
**+1 405 760 5327**  
 nathan@naisullivangroup.com

**+1 405 840 0600 OFFICE**

4045 N.W. 64<sup>th</sup> Street, Suite 340  
 Oklahoma City, OK 73116

**www.naisullivangroup.com**