

OFFICE SPACE FOR LEASE

El Dorado Hills Business Park



4818 Golden Foothill Parkway Unit 1

570 sq.ft. corner office space with large windows and ample parking. Well-managed Palms Commerce Center. Only minutes to Highway 50 and Town Center restaurants and shopping.

- Reception area
- 2 Private Offices
- Open area
- Private Restroom

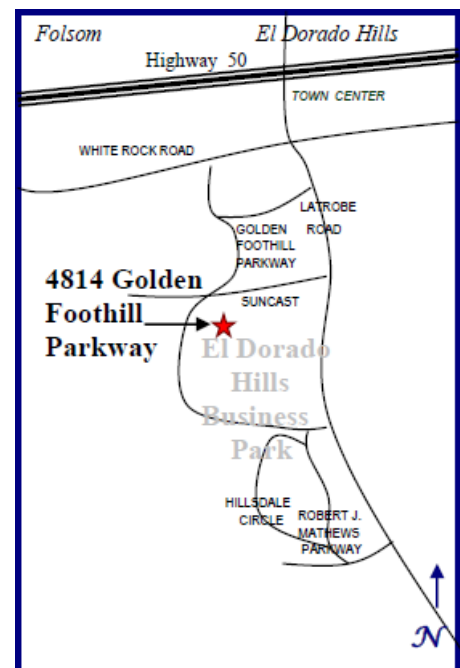
2-3 year term \$963.30 per month including NNN's

4 + year term \$934.80 per month including NNN's
(NNN's est. \$0.37 psf)

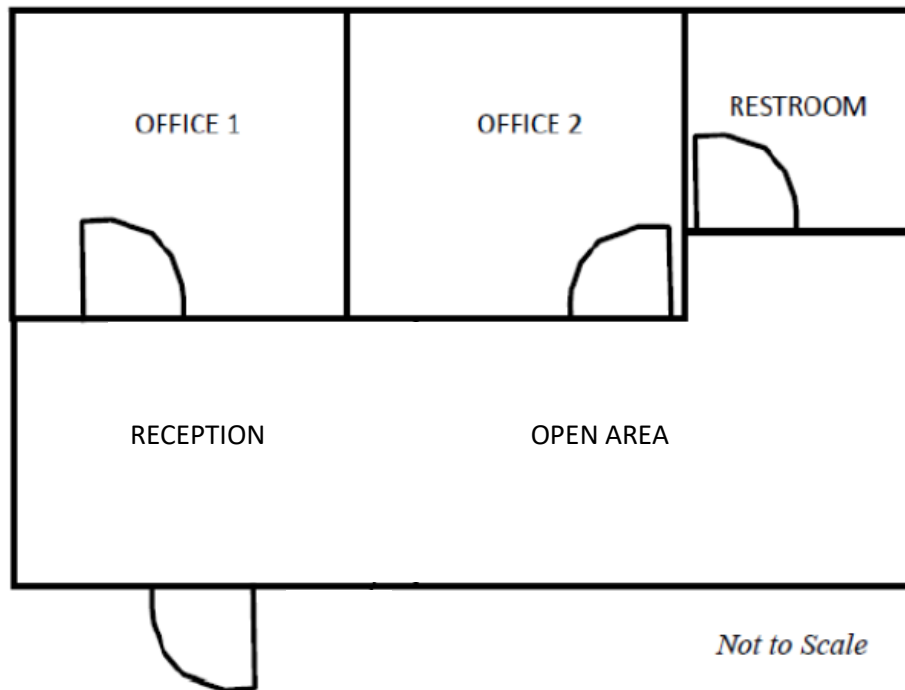
*Tenant is responsible for its own PGE, data, phones,
janitorial, and disposing trash into dumpster*

Marilyn Gautschi. Broker (916) 934-6446
marilyn.gautschi@gmail.com DRE 00702641

AMERICAN COMMERCIAL REAL ESTATE
4944 Windplay Drive Ste, 245, El Dorado Hills, CA 95762



PALMS COMMERCE CENTER
4818 #1 Golden Foothill Parkway, El Dorado Hills



Marilyn Gautschi, Broker (916) 934-6446

AMERICAN COMMERCIAL REAL ESTATE

4944 Windplay Dr., Ste. 245 El Dorado Hills, CA 95762 DRE 00702641