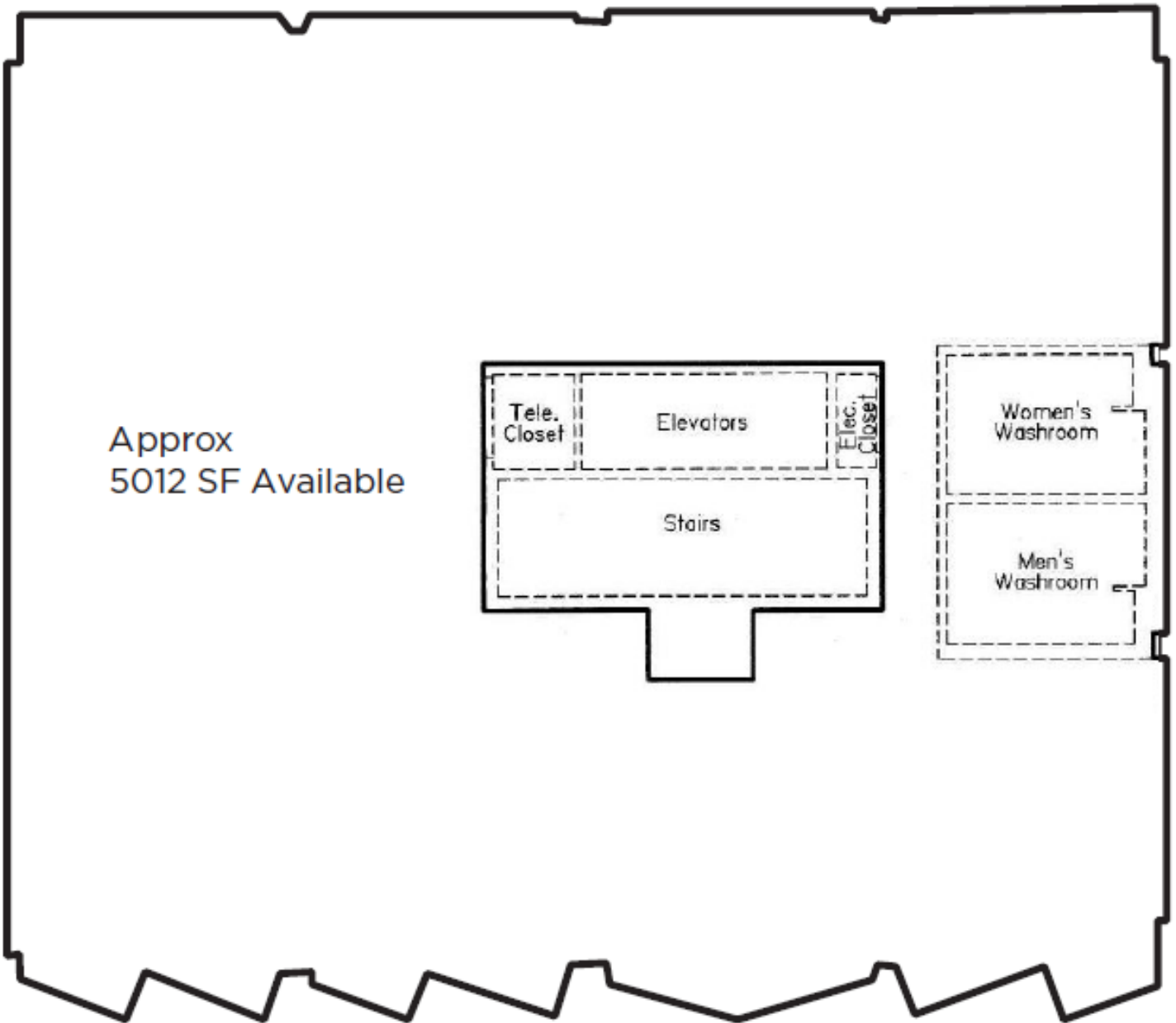




Located in the fringe core, between Metcalfe and Elgin, this property offers fantastic walkability to Parliament Hill, City Hall the Courthouse as well as Elgin Street restaurants and shops. This shell unit offers the tenant an array of endless possibilities to customize the space to meet the style and needs to be desired and required. To schedule a showing, please contact us today.

Unit Features

- Great Location
- Easily Accessible
- Close proximity to building's fitness center



THE ATTACHED DRAWINGS ARE PROVIDED FOR INFORMATION PURPOSES ONLY AND SHOULD NOT BE RELIED UPON. THE LANDLORD SHALL NOT BE HELD RESPONSIBLE FOR THE PURPOSE OF THE TENANT'S WORK AND SPACE PLANNING.

Property Details



Location
Downtown



Public Transit
OC Transpo Stops
nearby



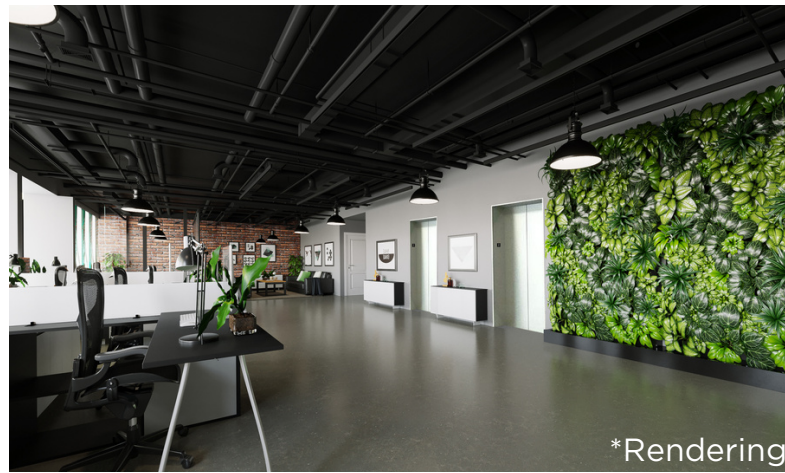
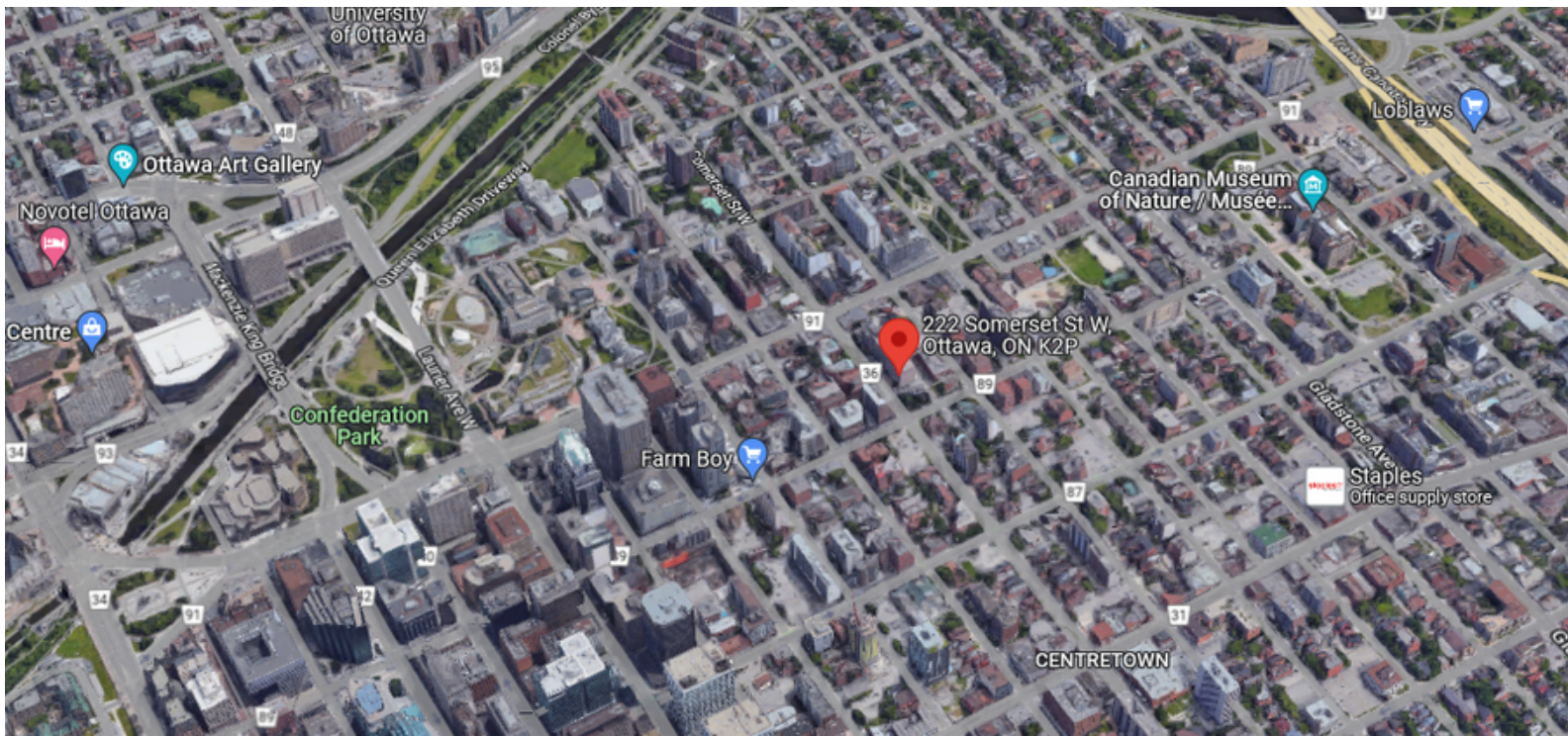
Accessibility
Elevators



Building
Stand Alone



Parking
Outdoor & Street



*Rendering



*Rendering



**THE
PROPERTIES
GROUP**

THE PROPERTIES GROUP MANAGEMENT LTD.

236 Metcalfe Street, Ottawa, ON K2P 1R3

(613) 369-5486 / leasing@prpgrp.com / www.thepropertiesgroup.ca