

# 13<sup>th</sup> & Sansom Street

# S U B L E A S E

## 2<sup>nd</sup> & 3<sup>rd</sup> Floors - 2,444 SF



## SPACE FEATURES:

- 2,444 SF bi-level creative office on the 2<sup>nd</sup> and 3<sup>rd</sup> floors at the corner of 13<sup>th</sup> and Sansom.
- Creative space with exposed ceilings, brick, and modern flooring throughout.
- Glass enclosed conference room
- Glass enclosed office
- 2 phone rooms
- Wall mural by local artist
- Excellent natural light
- Available for immediate occupancy
- Furniture available – Plug & Play
- August 2027 Lease Expiration



For more information, please contact:

**BRIAN NEARY**  
Tenant Representative  
215.219.7069  
[bneary@gola.com](mailto:bneary@gola.com)

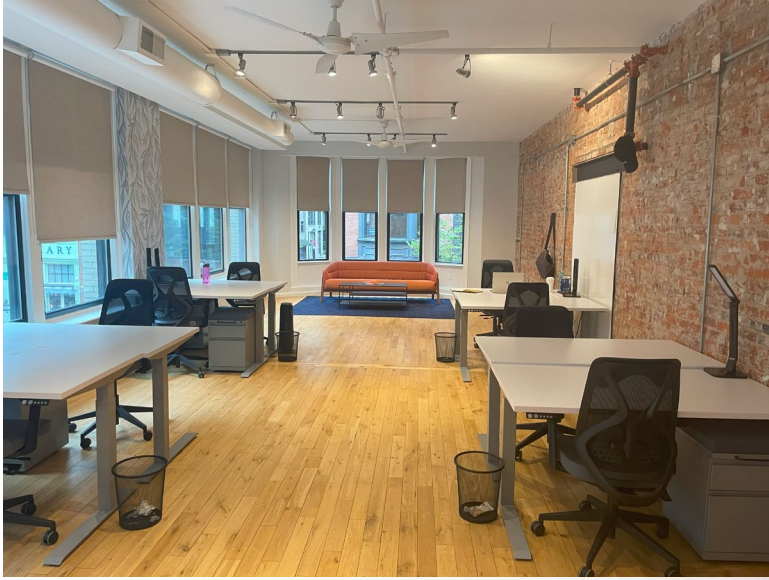
**COLIN FLEMING**  
Tenant Representative  
610.955.5161  
[cflaming@gola.com](mailto:cflaming@gola.com)

**GOLA CORPORATE REAL ESTATE**

2001 Market Street, 25<sup>th</sup> Floor, Philadelphia PA | 2490 Boulevard of the Generals, Norristown PA | [www.gola.com](http://www.gola.com) | 610.631.0333

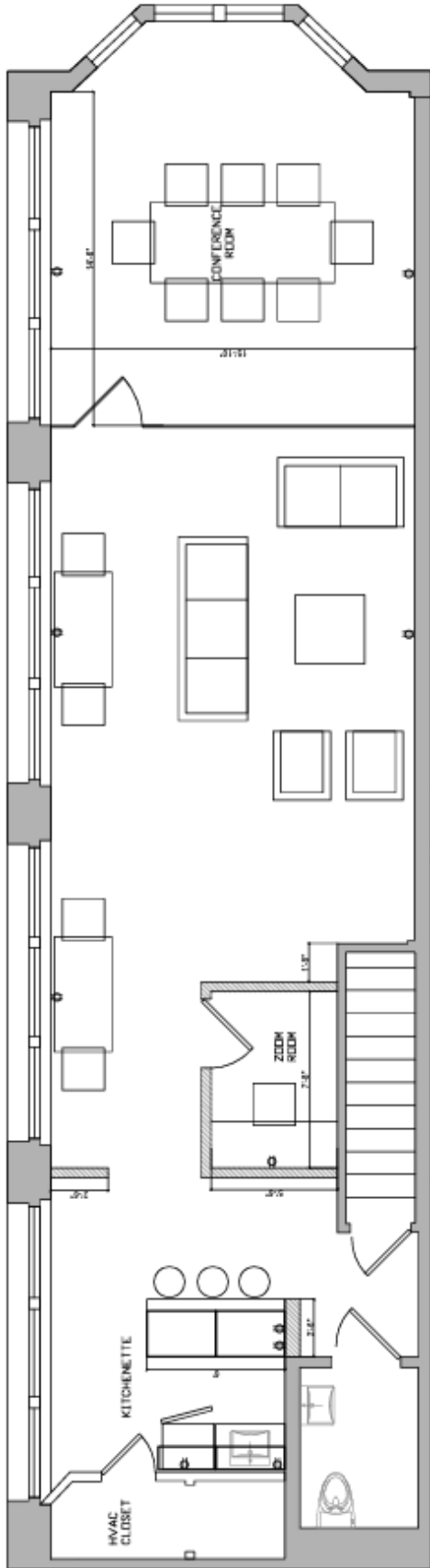
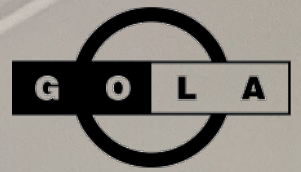


# SPACE PHOTOS

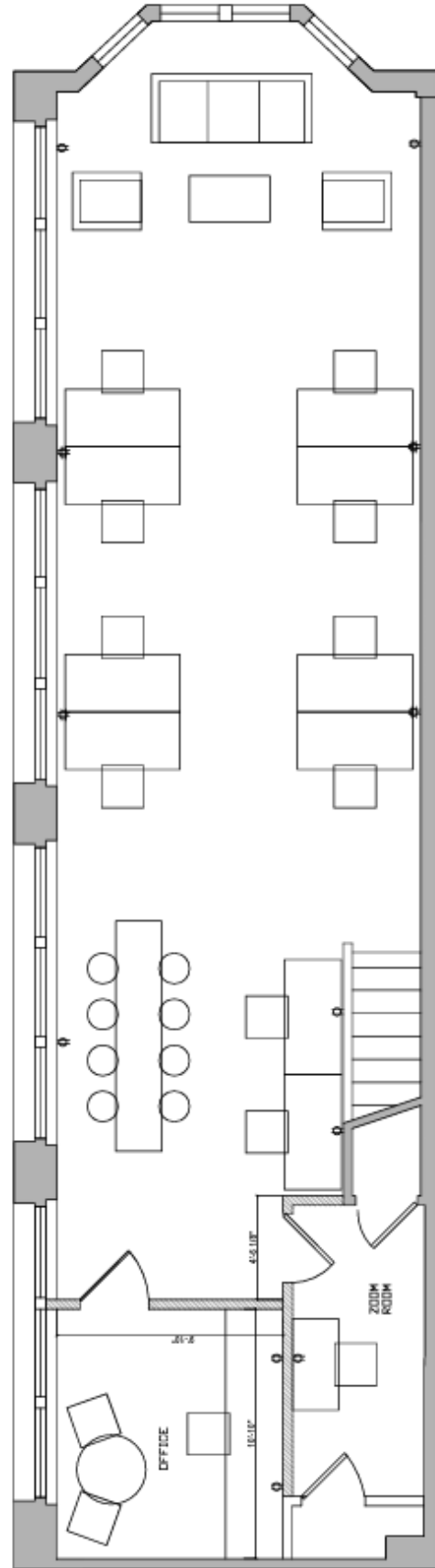




# FLOOR PLAN



THIRD FLOOR PLAN



SECOND FLOOR PLAN