

FOR SALE

1800 WOODLAWN DRIVE
Woodlawn, MD 21207





PROPERTY DESCRIPTION

1800 WOODLAWN DRIVE

40,346 Sq Ft
Building Size

1.9 Acres
Lot Size

5 Dock Doors
Loading

53 spaces
Parking

8,000± Sq Ft
Office Component

16' - 26'
Ceiling Height

BM
Zoning

9 RTUs / Gas Heat
HVAC

32,000± Sq Ft
Warehouse Space

1967
Year Built

Wet System
Sprinkler

TPO (partial)
Roof





#THISISMYPITY

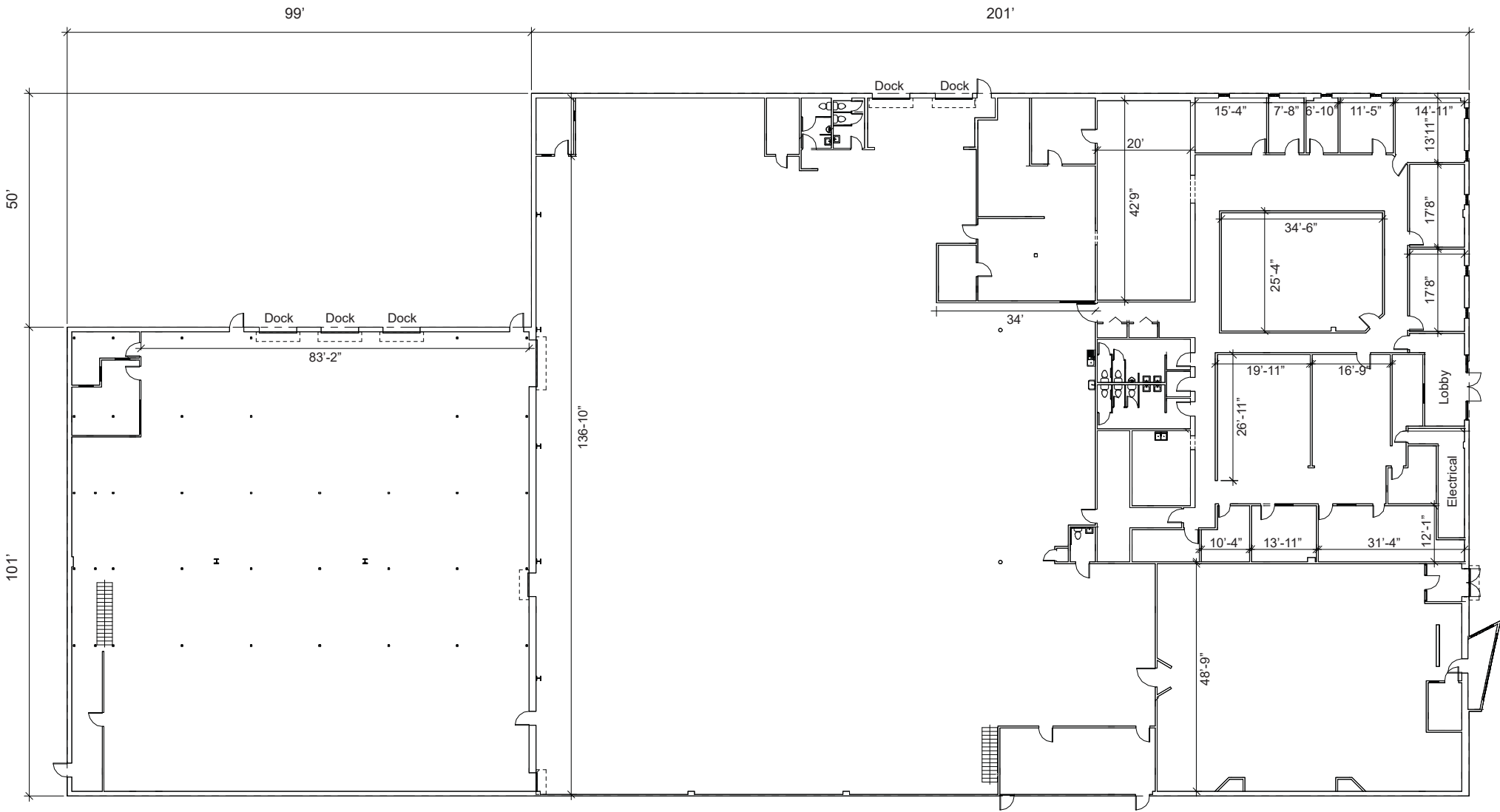
SHOE CITY

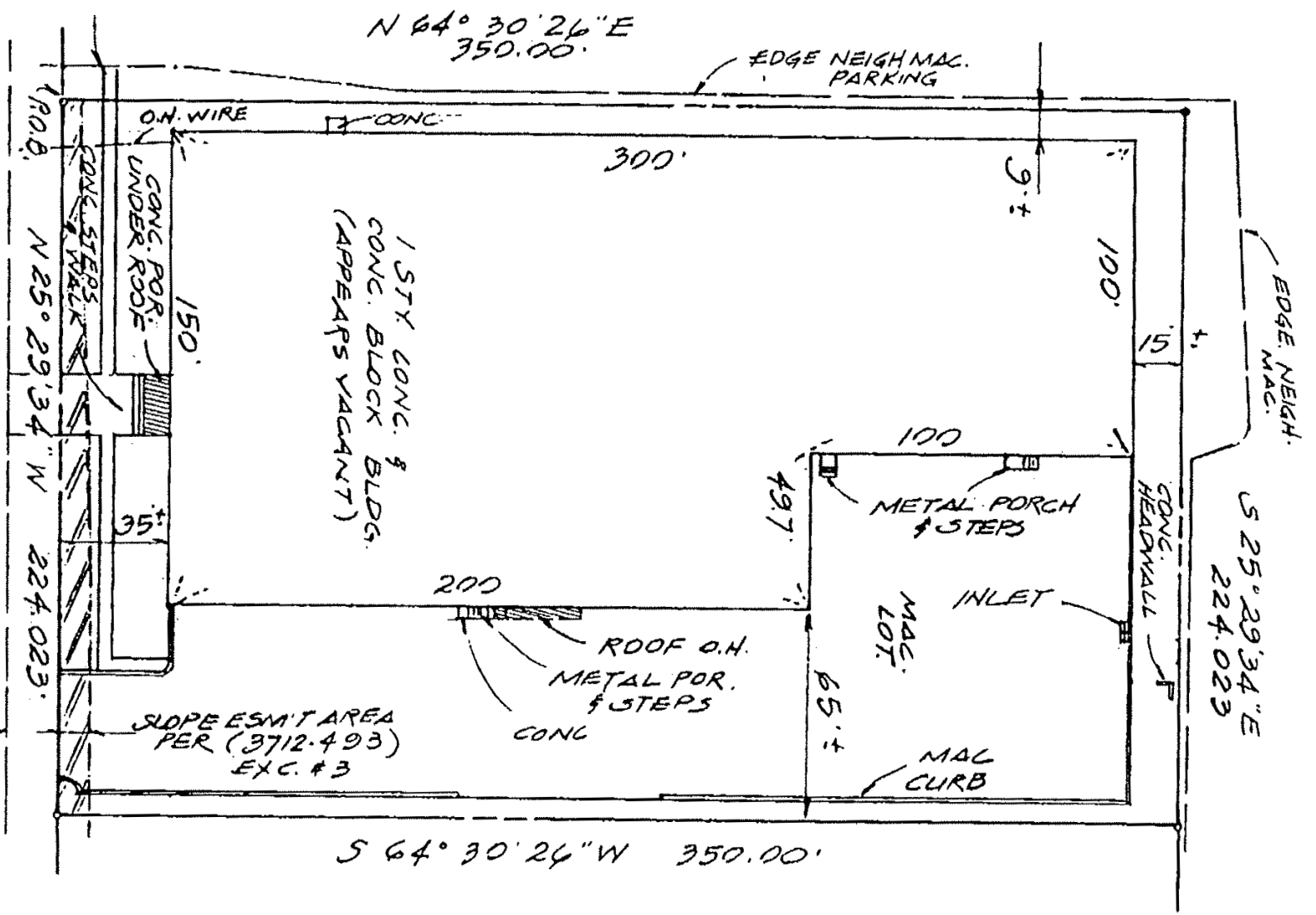
1800



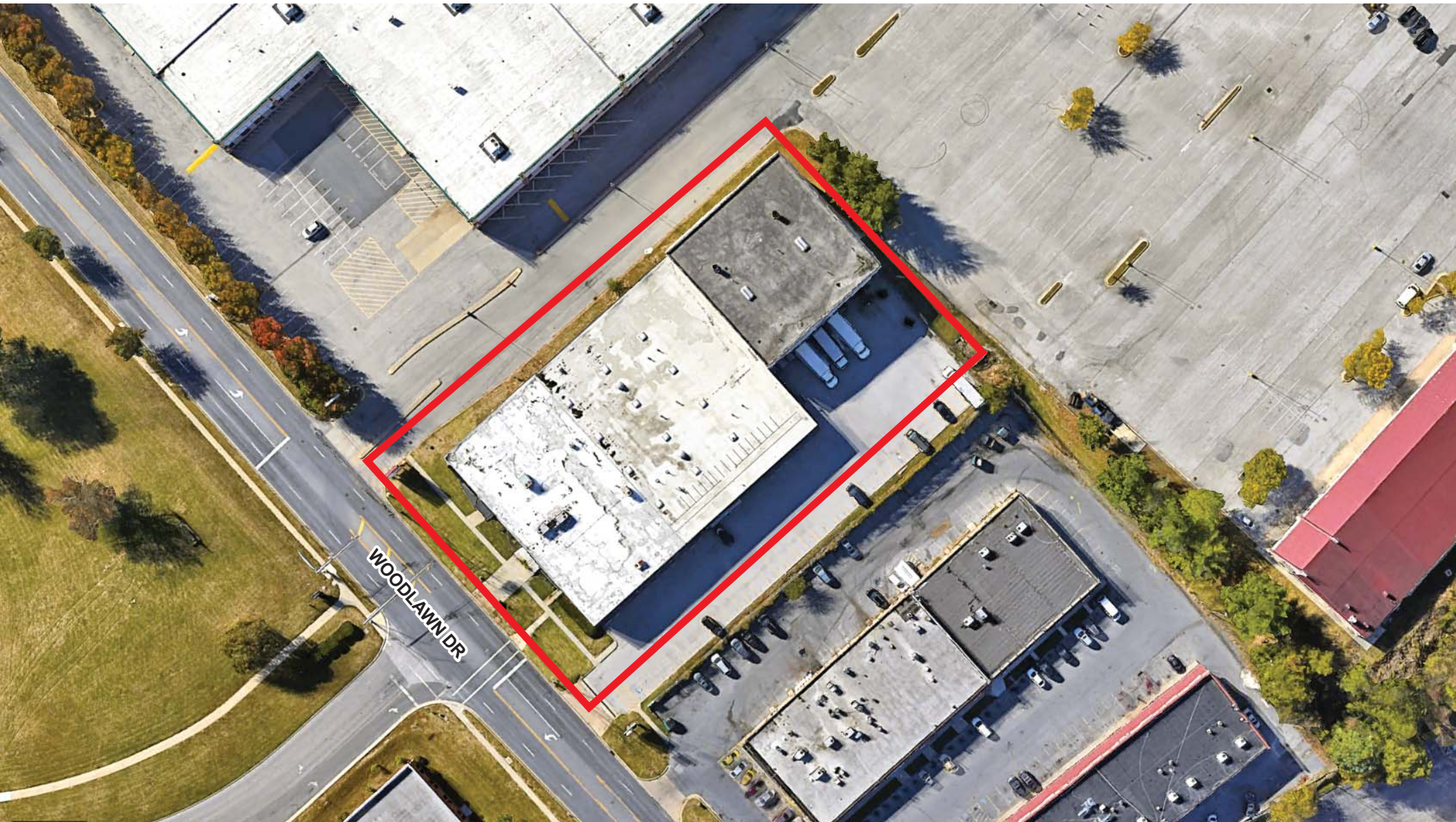


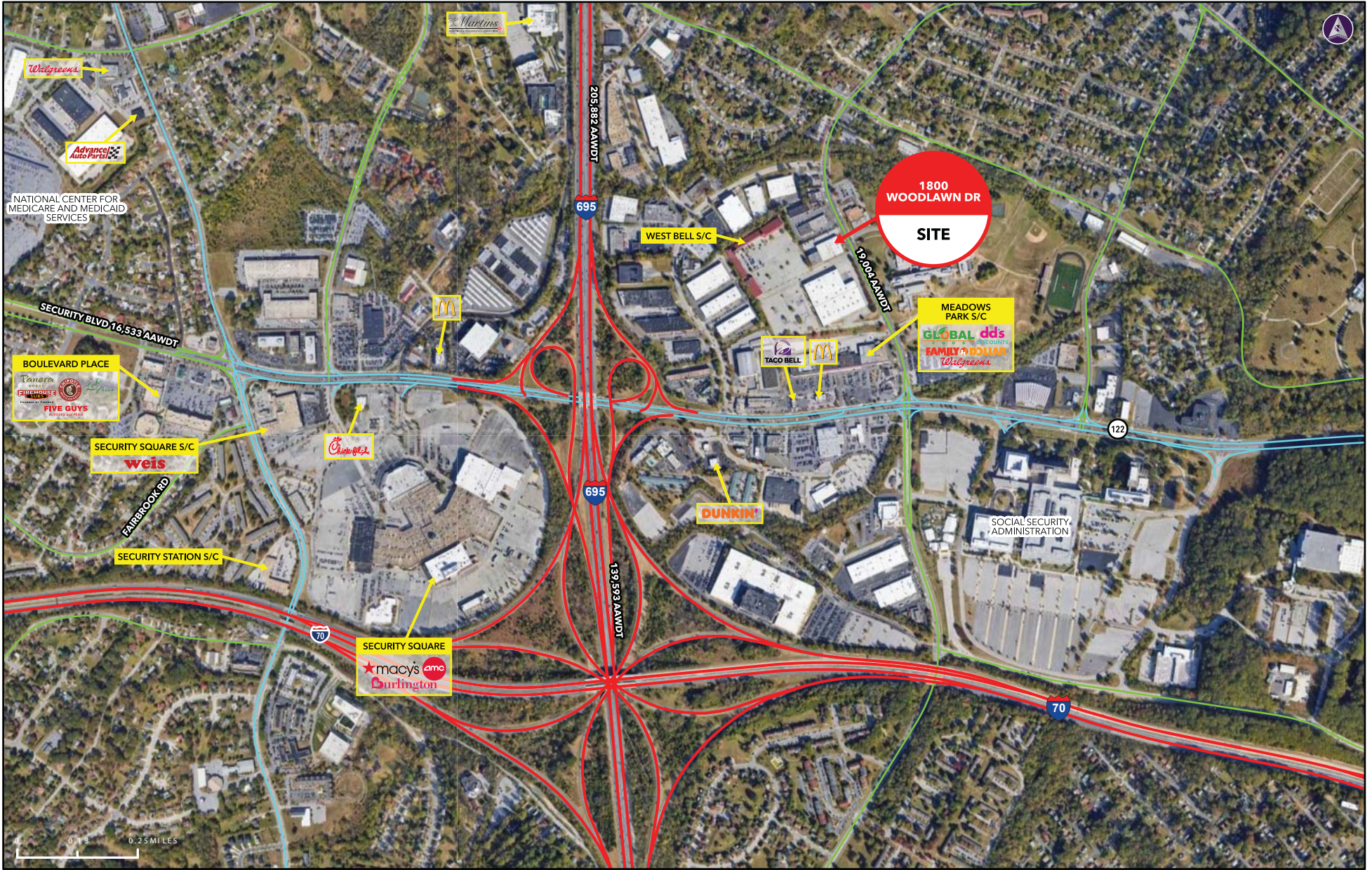






"CLARKE AVENUE" (27.21) (3752.588) EXC. #3
 WOODLAWN DRIVE.
 PER FIELD & (45.137)
 (80' WIDE)





CONTACT INFO

All inquiries should be directed to:



Blue & Obrecht Realty, LLC
9475 Deereco Road, Suite 200
Timonium, MD 21093



Main Phone #
410-561-5568
www.blueobrecht.com



Richard F. Blue, Jr., SIOR
Direct: 443-330-4801
rblue@blueobrecht.com



Dixon Hopkins
Direct: 443-330-4810
dhopkins@blueobrecht.com



H&R Retail
3 Bethesda Metro Center, Suite 620
Bethesda, MD 20814



Main Phone #
301-656-3030
www.hrretail.com



Geoffrey Mackler
Direct: 240-482-3616
gmackler@hrretail.com