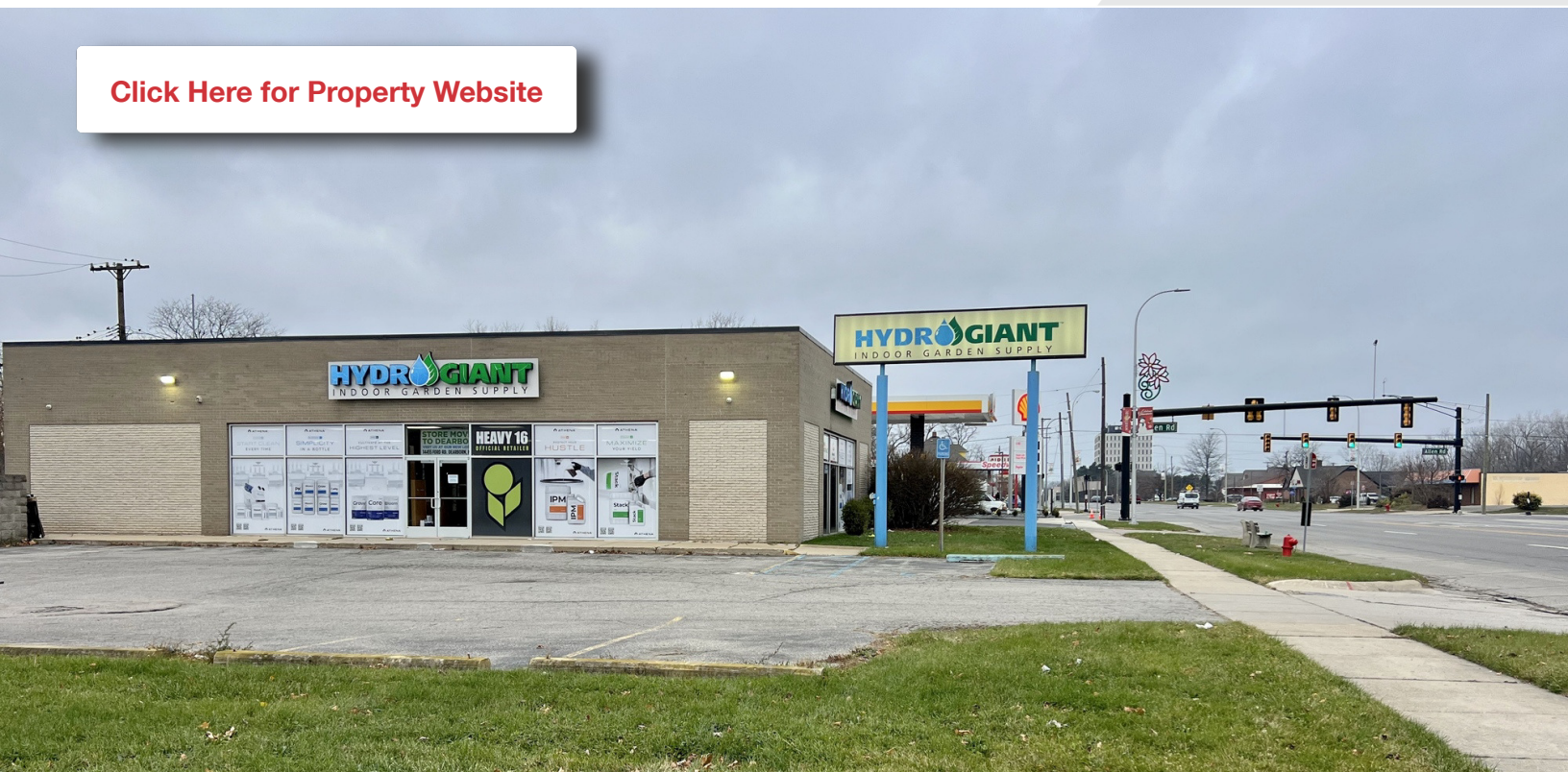


RETAIL



FOR SALE

[Click Here for Property Website](#)



19363 Eureka Rd

Southgate, Michigan 48195

Property Highlights

- 3,825 SF
- Great Frontage on Eureka Rd near Corner of Allen Rd
- High Visibility
- Minutes from I-75, Southland Mall and Many Shops and Restaurants
- Strong Traffic Counts and Demographics
- 2 New Marriott Properties just Built Nearby
- Ideal for Numerous Retail, Office, or Medical Uses
- Pylon Signage

OFFERING SUMMARY

Sale Price:	\$700,000
Lot Size:	14,355 SF
Building Size:	3,825 SF

DEMOGRAPHICS

	1 MILE	3 MILES	5 MILES
Total Households	2,810	36,048	95,541
Total Population	6,130	84,240	228,356
Average HH Income	\$85,039	\$85,572	\$84,614

NAI Farbman

Commercial Real Estate Services, Worldwide.

www.naifarbman.com

John Harwood
Senior Vice President | 734.755.0488
harwood@farbman.com

NO WARRANTY, EXPRESS OR IMPLIED, IS MADE AS TO THE ACCURACY OF THE INFORMATION CONTAINED HEREIN. THIS INFORMATION IS SUBMITTED SUBJECT TO ERRORS, OMISSIONS, CHANGE OF PRICE, RENTAL OR OTHER CONDITIONS, WITHDRAWAL WITHOUT NOTICE, AND IS SUBJECT TO ANY SPECIAL LISTING CONDITIONS IMPOSED BY OUR PRINCIPALS. COOPERATING BROKERS, BUYERS, TENANTS AND OTHER PARTIES WHO RECEIVE THIS DOCUMENT SHOULD NOT RELY ON IT, BUT SHOULD USE IT AS A STARTING POINT OF ANALYSIS, AND SHOULD INDEPENDENTLY CONFIRM THE ACCURACY OF THE INFORMATION CONTAINED HEREIN THROUGH A DUE DILIGENCE REVIEW OF THE BOOKS, RECORDS, FILES AND DOCUMENTS THAT CONSTITUTE RELIABLE SOURCES OF THE INFORMATION DESCRIBED HEREIN. LOGOS ARE FOR IDENTIFICATION PURPOSES ONLY AND MAY BE TRADEMARKS OF THEIR RESPECTIVE COMPANIES. NAI Farbman, INC. CA BRE LIC. #01990696.

RETAIL



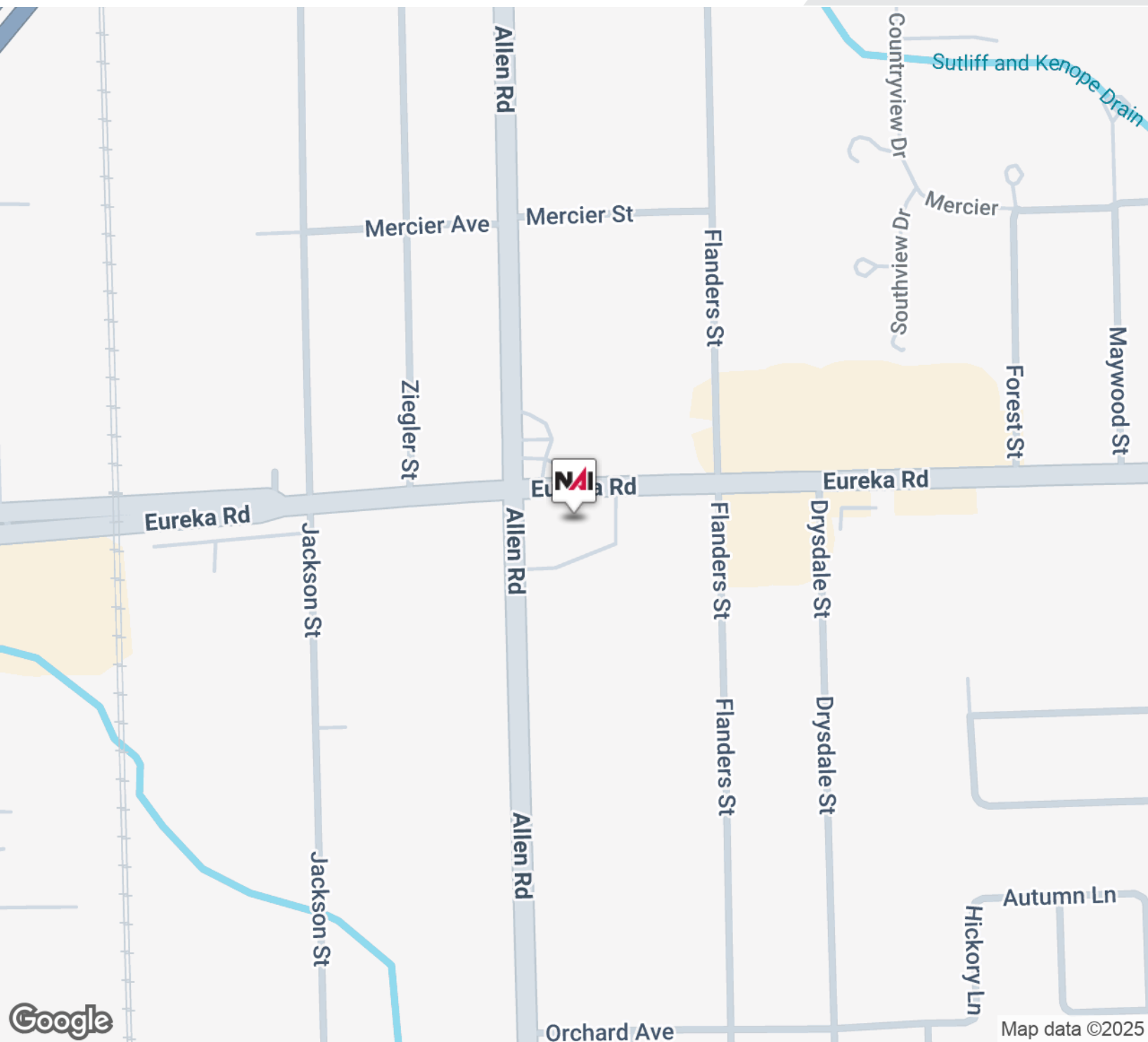
FOR SALE



RETAIL



FOR SALE



Commercial Real Estate Services, Worldwide.

www.naifarbman.com

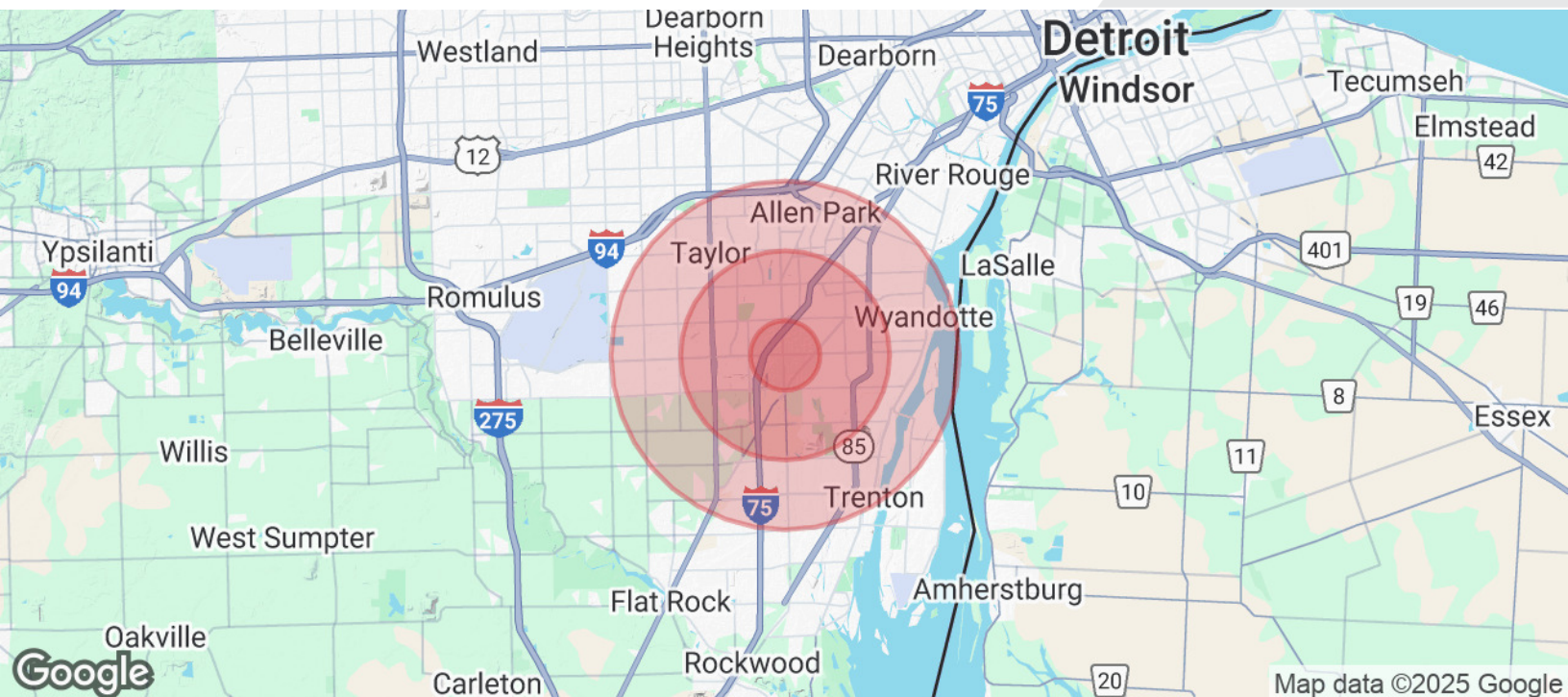
John Harwood
Senior Vice President | 734.755.0488
harwood@farbman.com

NO WARRANTY, EXPRESS OR IMPLIED, IS MADE AS TO THE ACCURACY OF THE INFORMATION CONTAINED HEREIN. THIS INFORMATION IS SUBMITTED SUBJECT TO ERRORS, OMISSIONS, CHANGE OF PRICE, RENTAL OR OTHER CONDITIONS, WITHDRAWAL WITHOUT NOTICE, AND IS SUBJECT TO ANY SPECIAL LISTING CONDITIONS IMPOSED BY OUR PRINCIPALS. COOPERATING BROKERS, BUYERS, TENANTS AND OTHER PARTIES WHO RECEIVE THIS DOCUMENT SHOULD NOT RELY ON IT, BUT SHOULD USE IT AS A STARTING POINT OF ANALYSIS, AND SHOULD INDEPENDENTLY CONFIRM THE ACCURACY OF THE INFORMATION CONTAINED HEREIN THROUGH A DUE DILIGENCE REVIEW OF THE BOOKS, RECORDS, FILES AND DOCUMENTS THAT CONSTITUTE RELIABLE SOURCES OF THE INFORMATION DESCRIBED HEREIN. LOGOS ARE FOR IDENTIFICATION PURPOSES ONLY AND MAY BE TRADEMARKS OF THEIR RESPECTIVE COMPANIES. NAI Farbman, INC. CA BRE LIC. #01990696.

RETAIL



FOR SALE



POPULATION	1 MILE	3 MILES	5 MILES
Total Population	6,130	84,240	228,356
Average Age	46	43	42
Average Age (Male)	44	41	40
Average Age (Female)	48	44	43
HOUSEHOLDS & INCOME	1 MILE	3 MILES	5 MILES
Total Households	2,810	36,048	95,541
# of Persons per HH	2.2	2.3	2.4
Average HH Income	\$85,039	\$85,572	\$84,614
Average House Value	\$194,098	\$186,930	\$185,978

Demographics data derived from AlphaMap



Commercial Real Estate Services, Worldwide.

www.naifarbman.com

John Harwood
Senior Vice President | 734.755.0488
harwood@farbman.com

NO WARRANTY, EXPRESS OR IMPLIED, IS MADE AS TO THE ACCURACY OF THE INFORMATION CONTAINED HEREIN. THIS INFORMATION IS SUBMITTED SUBJECT TO ERRORS, OMISSIONS, CHANGE OF PRICE, RENTAL OR OTHER CONDITIONS, WITHDRAWAL WITHOUT NOTICE, AND IS SUBJECT TO ANY SPECIAL LISTING CONDITIONS IMPOSED BY OUR PRINCIPALS. COOPERATING BROKERS, BUYERS, TENANTS AND OTHER PARTIES WHO RECEIVE THIS DOCUMENT SHOULD NOT RELY ON IT, BUT SHOULD USE IT AS A STARTING POINT OF ANALYSIS, AND SHOULD INDEPENDENTLY CONFIRM THE ACCURACY OF THE INFORMATION CONTAINED HEREIN THROUGH A DUE DILIGENCE REVIEW OF THE BOOKS, RECORDS, FILES AND DOCUMENTS THAT CONSTITUTE RELIABLE SOURCES OF THE INFORMATION DESCRIBED HEREIN. LOGOS ARE FOR IDENTIFICATION PURPOSES ONLY AND MAY BE TRADEMARKS OF THEIR RESPECTIVE COMPANIES. NAI Farbman, INC. CA BRE LIC. #01990696.