

Colliers



35-30

Francis Lewis Boulevard | Suite 205
Flushing, NY

Queens Office/Medical for Lease

Property Details

Available: +/- 4,600 SF (Suite 205)
Occupancy: Immediate
Asking Rent: Available Upon Request

Highlights

- Second floor office/medical space
- On-site parking garage for employees
- ADA compliant elevator
- Signage exposure
- Heavily trafficked area
- Transportation: Q76 (Francis Lewis Blvd. and 194 St.) bus stop directly in front

First Floor Tenants

- Sleepy's LLC, Ear, Nose & Throat Associates of New York P.C., Movements Concepts Physical Therapy P.C., Daniel Gale Associates Inc. of East Norwich

Second Floor Tenants

- Cement & Concrete Workers Dist. Council, Gentle Dental World P.C., Family Speech Language Pathology P.C., Huntington Learning Corporation

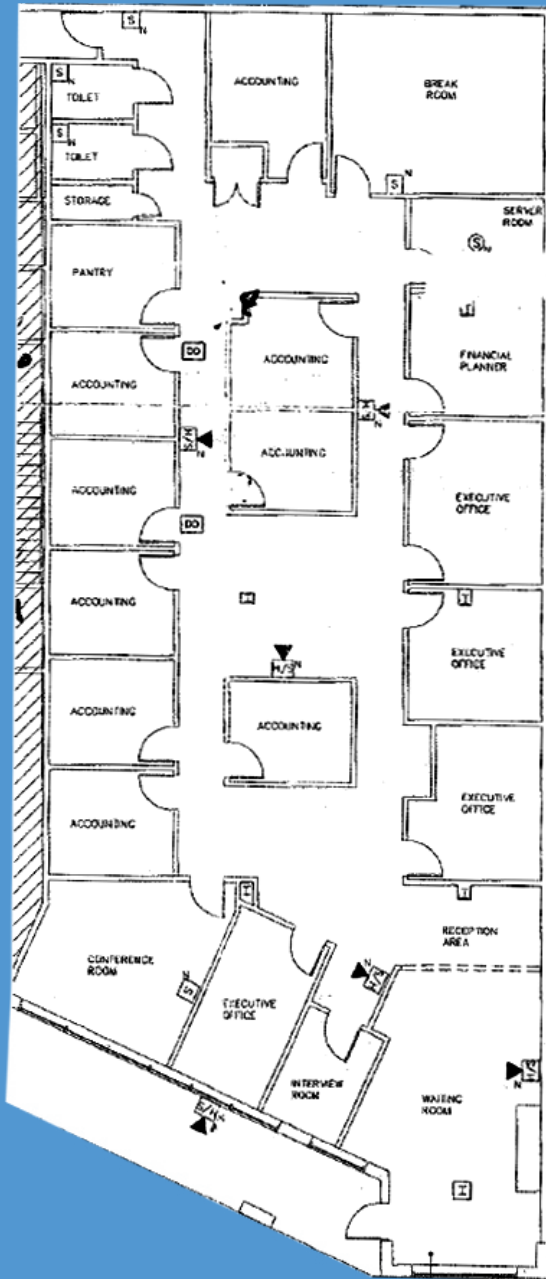
No representation is made as to the accuracy of the information furnished herein and same is submitted subject to errors, omissions, change of prices, rental, or other conditions, prior sale, lease, sublease, and/or withdrawal without notice. While every attempt is made to ensure accuracy, the floor plan(s) is for guidance only. The measurements, dimensions, specifications, and other data shown are approximate and may not be to scale. We assume no responsibility for the accuracy of the floor plan(s) or for any action taken in reliance thereon. The floor plan(s) do not create any representation, warranty or contract. All parties should consult a professional, such as an architect, to verify the information contained herein. The furnishing of this information shall not be deemed a hiring. A commission in accordance with our principal's schedule of rates and conditions will be paid to the procuring Broker who executes our or our principal's brokerage agreement, subject to a fully consummated transaction upon terms and conditions acceptable to our principal. Colliers International LI, Inc.



35-30

Francis Lewis Boulevard | Suite 205
Flushing, NY

Queens Office/Medical for Lease



Demographics

Estimated Daytime Population

1 Mile:	52,385
2 Miles:	194,040
3 Miles:	384,657

Average Household Income

1 Mile:	\$111,989
2 Miles:	\$100,460
3 Miles:	\$99,291

Total Households

1 Mile:	20,062
2 Miles:	78,359
3 Miles:	148,702

35-30

Francis Lewis Boulevard | Suite 205
Flushing, NY

Queens Office/Medical for Lease



35-30
Francis Lewis Boulevard / Suite 205
Flushing, NY
Queens Office/Medical for Lease

133,885
VPD

157,745
VPD

173,678
VPD

136,309
VPD

164,702
VPD

137,103
VPD

136,007
VPD

HomeGoods
petco

amc THEATRES
pure barre
StopsShop
HomeGoods
Northwell Health

NYC healing CENTER

AutoZone

AON

Auburn Train Station

Northwell Health
FRESENIUS MEDICAL CARE

BioReference LABORATORIES
Northwell Health

FLUSHING HOSPITAL MEDICAL CENTER

amc THEATRES
MICHAEL'S
CITYMD URGENT CARE

Flushing Meadows Corona Park

NewYork-Presbyterian

Cunningham Park

NYC HEALTH + HOSPITALS

Grand Central Parkway

Hollis

Queens



35-30

Francis Lewis Boulevard | Suite 205
Flushing, NY

Queens Office/Medical for Lease

Matthew Kucker

Licensed RE Salesperson

+1 516 284 3418

matthew.kucker@colliers.com

Jordan Baruch

Licensed RE Salesperson

+1 516 284 3446

jordan.baruch@colliers.com

No representation is made as to the accuracy of the information furnished herein and same is submitted subject to errors, omissions, change of prices, rental, or other conditions, prior sale, lease, sublease, and/or withdrawal without notice. While every attempt is made to ensure accuracy, the floor plan(s) is for guidance only. The measurements, dimensions, specifications, and other data shown are approximate and may not be to scale. We assume no responsibility for the accuracy of the floor plan(s) or for any action taken in reliance thereon. The floor plan(s) do not create any representation, warranty or contract. All parties should consult a professional, such as an architect, to verify the information contained herein. The furnishing of this information shall not be deemed a hiring. A commission in accordance with our principal's schedule of rates and conditions will be paid to the procuring Broker who executes our or our principal's brokerage agreement, subject to a fully consummated transaction upon terms and conditions acceptable to our principal. Colliers International LI Inc.