

10205 – 10221 SOUTHPOINT PKWY FREDERICKSBURG, VA 22407

1,400 – 2,800 SF SPACE AVAILABLE | FOR LEASE | RETAIL



BERKLEY MITCHELL, Vice President | berkley.mitchell@thalhimer.com | 540 322 4144
JOBY SALICETI, Senior Associate | joby.salceti@thalhimer.com | 540 322 4142



Independently Owned and Operated / A Member of the Cushman & Wakefield Alliance

Cushman & Wakefield | Thalhimer © 2025. No warranty or representation, express or implied, is made to the accuracy or completeness of the information contained herein, and same is submitted subject to errors, omissions, change of price, rental or other conditions, withdrawal without notice, and to any special listing conditions imposed by the property owner(s). As applicable, we make no representation as to the condition of the property (or properties) in question.

10205 – 10221 SOUTHPOINT PKWY

FREDERICKSBURG, VA 22407

1,400 – 2,800 SF SPACE AVAILABLE | FOR LEASE | RETAIL

PREMISES

10205-10221 SOUTHPOINT PKWY AND RTE. 1

UNIT 10215 & 10213:

1,400 – 2,800 SF

TOTAL 2,800 SF

FRONTAGE

±15 Feet

LEASE TYPE

GROSS

POSSESSION

IMMEDIATELY

ASKING RENT

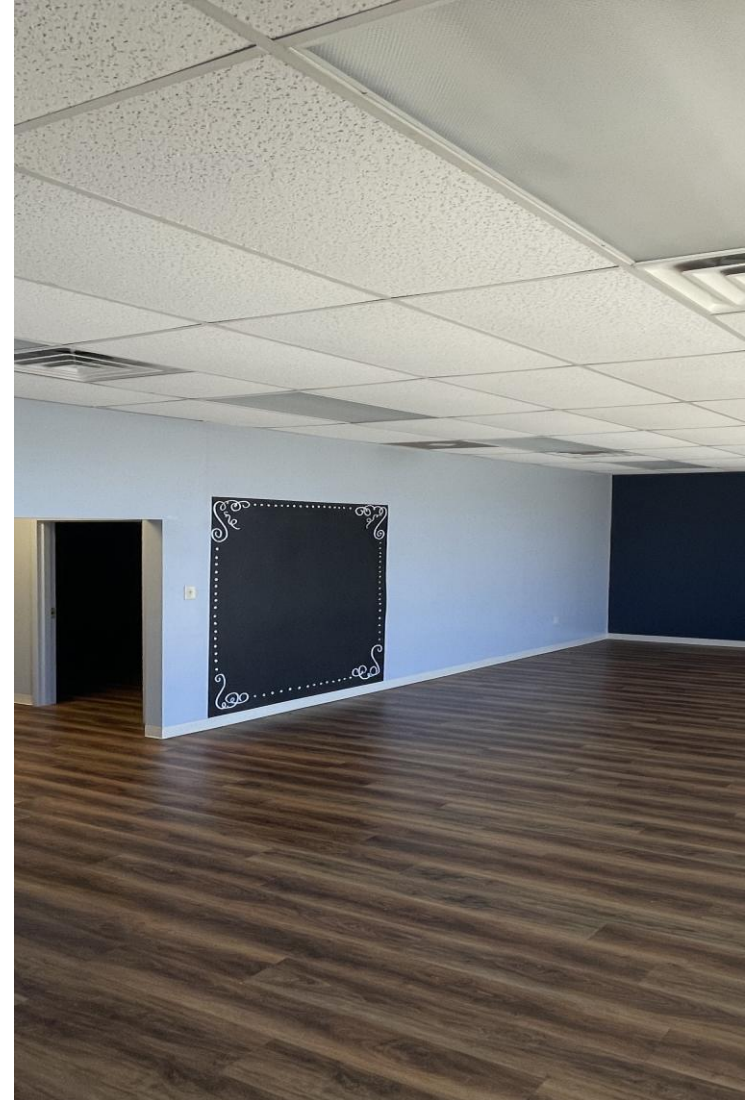
NEGOTIABLE

NEIGHBORS

Walmart, Lowes, Buffalo Wild Wings, and Kickback Jack's

COMMENTS

- Near Cosner's Corner, Featuring Target, Publix, & Kohl's
- Fantastic new residential communities at Southpoint Landing
- Great proximity to I-95 Interchange; exit 126 and Route 1



10205 – 10221 SOUTHPOINT PKWY FREDERICKSBURG, VA

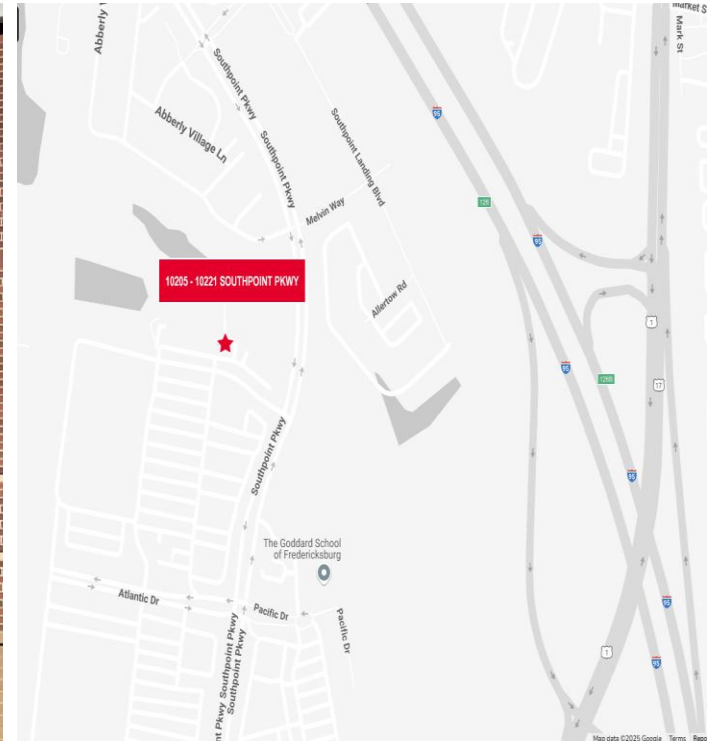
NEIGHBORHOOD MAP



10205 - 10221 SOUTHPOINT PKWAY

FREDERICKSBURG, VA 22407

PHOTOS



10205 - 10221 SOUTHPOINT PKWAY FREDERICKSBURG, VA 22407

AERIAL



10205 – 10221 SOUTHPOINT PKWY

FREDERICKSBURG, VA 22408

For more information, please contact:

BERKLEY MITCHELL, Vice President | berkley.mitchell@thalhimer.com | 540 322 4144

JOBY SALICETI, Senior Associate | joby.saliceti@thalhimer.com | 540 322 4142



Thalhimer Center
1100 W. Broad Street
Glen Allen, VA 23060
thalhimer.com

Independently Owned and Operated / A Member of the Cushman & Wakefield Alliance

Cushman & Wakefield | Thalhimer © 2025. No warranty or representation, express or implied, is made to the accuracy or completeness of the information contained herein, and same is submitted subject to errors, omissions, change of price, rental or other conditions, withdrawal without notice, and to any special listing conditions imposed by the property owner(s). As applicable, we make no representation as to the condition of the property (or properties) in question.