



# STAND ALONE IOS FACILITY AVAILABLE

## 569 INDUSTRIAL DR | LEWISBERRY, PA



[WWW.LANDMARKCR.COM](http://WWW.LANDMARKCR.COM)

(717) 731.1990










### OFFERING SUMMARY

Sale Price	\$2,950,000
Lease Rate	\$15,995 /month
Lease Type	NNN
Building Size	15,200 SF
Lot Size	3.62 Acres
Building Type	Industrial IOS
Submarket	Harrisburg West
Municipality	Fairview Township
County	York County

### PROPERTY HIGHLIGHTS

- Turn-key 15,200 SF stand alone industrial outdoor storage (IOS) facility for sale or lease situated in Fairview Industrial Park In Lewisberry, PA
- The property sits on a large 3.62 acre site that offers ample parking, lay-down yard for raw materials or equipment, and is entirely secured gated
- Property offers:
  - 12,700 SF warehouse space & 2,500 SF of office space with expansion potential
  - One (1) drive-in door
  - Six (6) dock doors
  - Twelve (12) tank on-site storage tank farm
- Corporate neighbors include: Amazon, Georgia Pacific, alphabroder/Prime Line, Spears Manufacturing, Bath Fitter, Groff Tractor & Equipment, National Hospice MedEquip, Gazebo Room, Quantum Imaging, Woodhaven Furniture, Overhead Door Company, and Zoetis.
- Located just off  with quick access to    

### PROPERTY DETAILS

Property Address	569 Industrial Dr, Lewisberry, PA 17339
Property Type	Industrial Outdoor Storage Facility (IOS)
Property Size	15,200 SF
Office Space	2,500 SF (expandable)
Tenancy	Single
Lot Size	3.62 Acres
Year Built	1979
Drive In Doors	1
Dock Doors	6
Clear Ceiling Height	18' - 25'
Parking	Ample
Construction	Masonry & Steel
Framing	Steel Frame
Roof	Standing Seam
Tank Farm	Yes (12)
Secured Yard	Yes
Water/Sewer	Public
Submarket	Harrisburg West
County	York
Municipality	Fairview Twp
Business Park	Fairview Industrial Park
Zoning	IB - Industrial Business
APN	27-000-QF-0147.A0-00000
Taxes	\$13,124 (2024)



AERIAL



**LANDMARK COMMERCIAL REALTY**  
425 N 21<sup>ST</sup> STREET, SUITE 302  
CAMP HILL, PA 17011  
P : 717.731.1990

**JASON GRACE, CCIM, SIOR**  
CEO & MANAGING PRINCIPAL  
JGRACE@LandmarkCR.com  
C: 717.421.1943

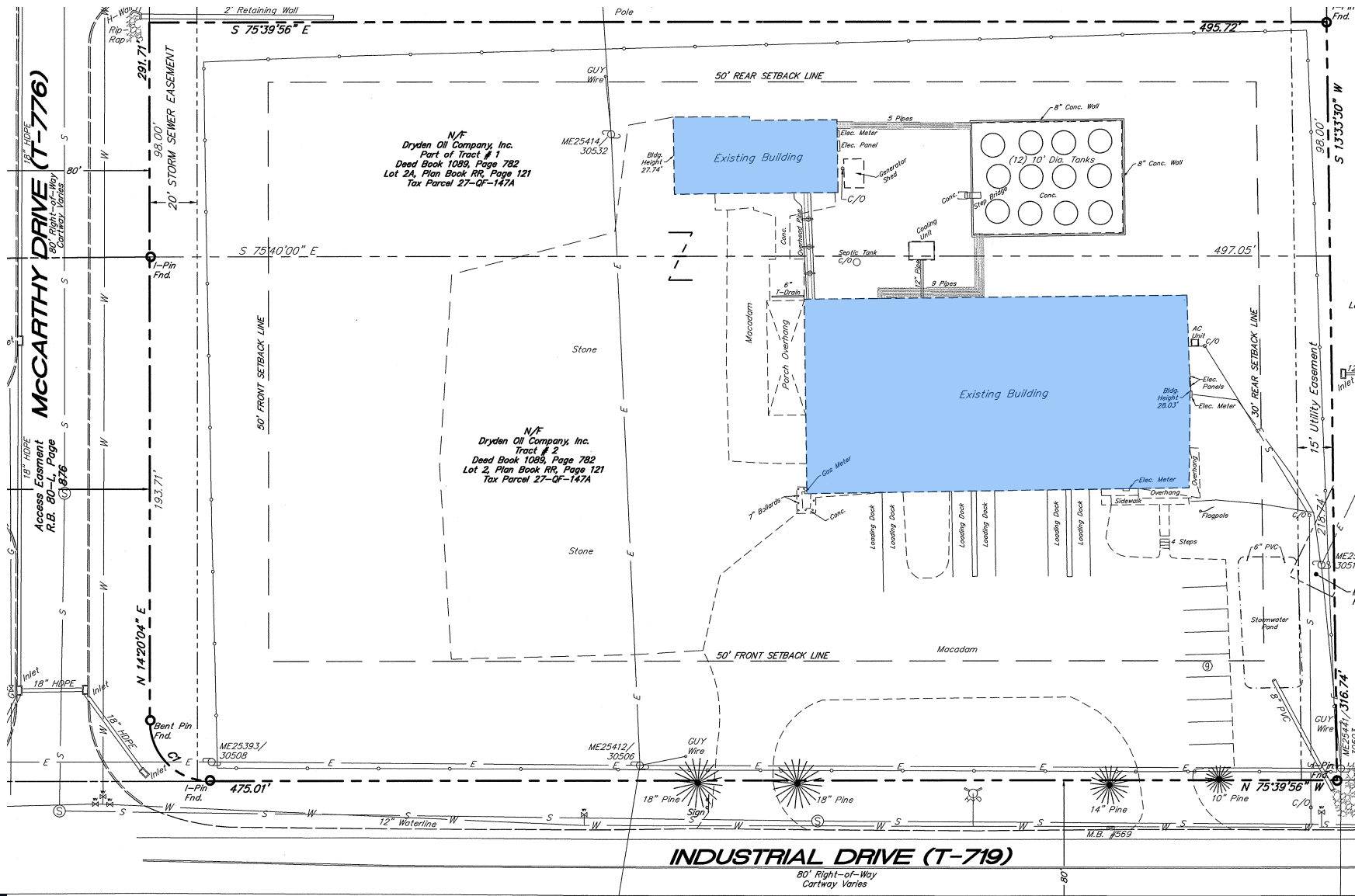
**MICHAEL CURRAN, SIOR**  
PRESIDENT & MANAGING DIRECTOR  
MCURRAN@LandmarkCR.com  
C: 717.805.9277

**JESSICA LILLY, MBA**  
SENIOR ASSOCIATE  
JLILLY@LandmarkCR.com  
C: 717.571.4324

**TCN**  
WORLDWIDE  
REAL ESTATE SERVICES

**LANDMARKCR.COM**

### SITE PLAN



TRADE AERIAL



LANDMARK COMMERCIAL REALTY  
425 N 21<sup>ST</sup> STREET, SUITE 302  
CAMP HILL, PA 17011  
P : 717.731.1990

JASON GRACE, CCIM, SIOR  
CEO & MANAGING PRINCIPAL  
JGRACE@LandmarkCR.com  
C: 717.421.1943

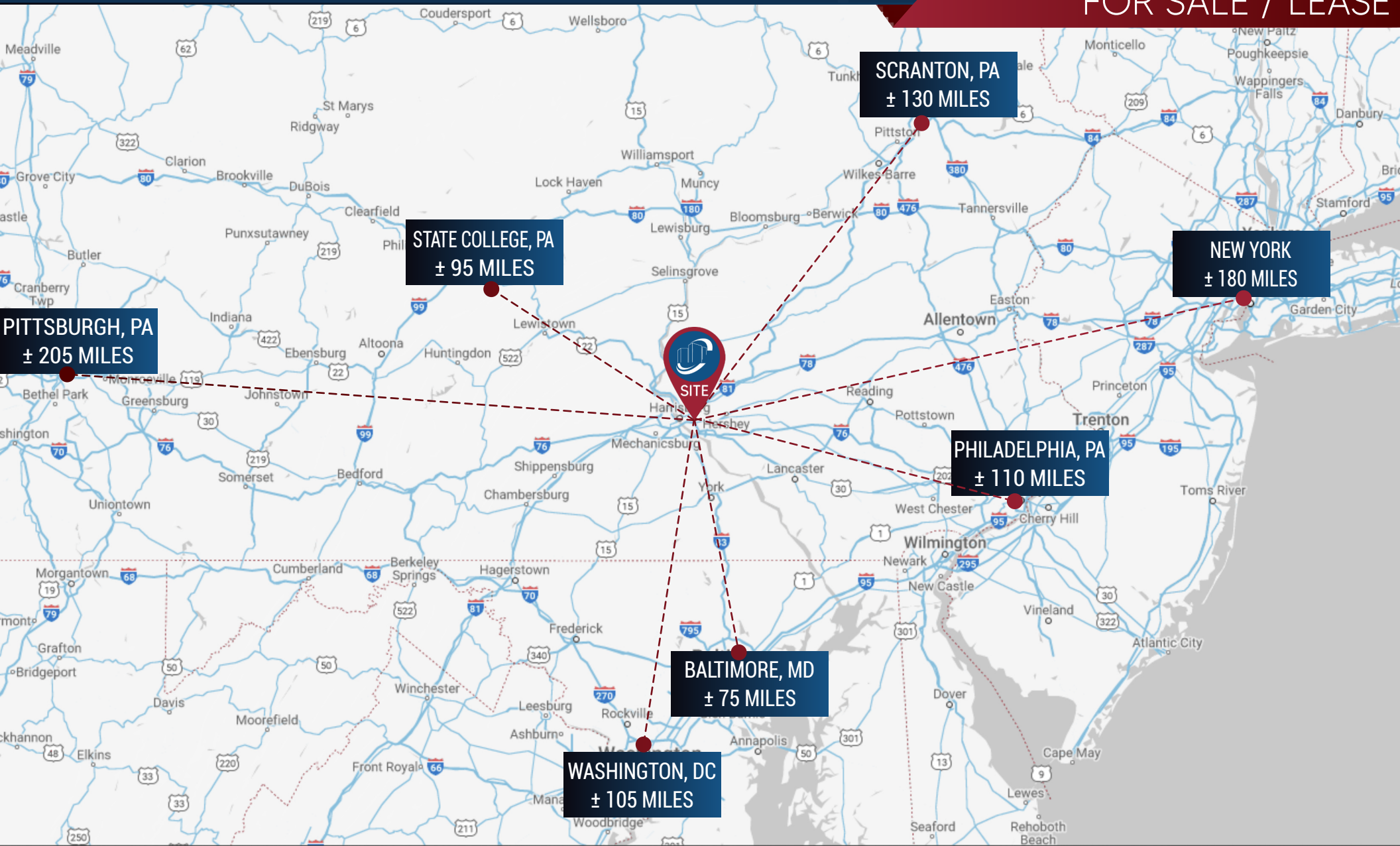
MICHAEL CURRAN, SIOR  
PRESIDENT & MANAGING DIRECTOR  
MCURRAN@LandmarkCR.com  
C: 717.805.9277

JESSICA LILLY, MBA  
SENIOR ASSOCIATE  
JLILLY@LandmarkCR.com  
C: 717.571.4324



# 569 INDUSTRIAL DR LEWISBERRY, PA

## STAND ALONE IOS FACILITY FOR SALE / LEASE



**LANDMARK COMMERCIAL REALTY**  
 425 N 21<sup>ST</sup> STREET, SUITE 302  
 CAMP HILL, PA 17011  
 P : 717.731.1990

**JASON GRACE, CCIM, SIOR**  
 CEO & MANAGING PRINCIPAL  
 JGRACE@LandmarkCR.com  
 C: 717.421.1943

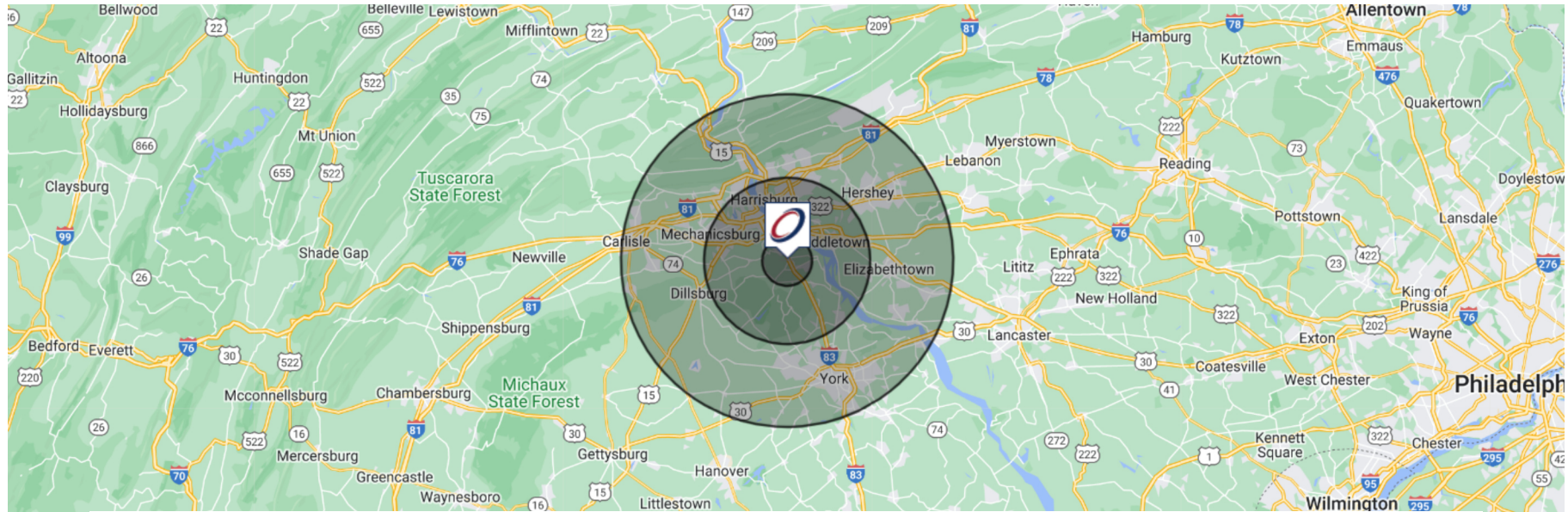
**MICHAEL CURRAN, SIOR**  
 PRESIDENT & MANAGING DIRECTOR  
 MCURRAN@LandmarkCR.com  
 C: 717.805.9277

**JESSICA LILLY, MBA**  
 SENIOR ASSOCIATE  
 JLILLY@LandmarkCR.com  
 C: 717.571.4324



**LANDMARKCR.COM**

### DEMOGRAPHICS



	3 Miles	10 Miles	20 Miles
Total households	6,230	138,232	345,940
Total population	15,689	345,488	870,506
Persons per household	2.5	2.5	2.5
Average household income	\$115,668	\$103,036	\$104,798
Average house value	\$295,142	\$277,175	\$285,054
Average age	42	41	42
Average age male	42	40	41
Average age female	43	42	43





### CONFIDENTIALITY & DISCLAIMER

---

All materials and information received or derived from Landmark Commercial its directors, officers, agents, advisors, affiliates and/or any third party sources are provided without representation or warranty as to completeness, veracity, or accuracy, condition of the property, compliance or lack of compliance with applicable governmental requirements, developability or suitability, financial performance of the property, projected financial performance of the property for any party's intended use or any and all other matters.

Neither Landmark Commercial its directors, officers, agents, advisors, or affiliates makes any representation or warranty, express or implied, as to accuracy or completeness of the any materials or information provided, derived, or received. materials and information from any source, whether written or verbal, that may be furnished for review are not a substitute for a party's active conduct of its own due diligence to determine these and other matters of significance to such party. Landmark Commercial will not investigate or verify any such matters or conduct due diligence for a party unless otherwise agreed in writing.

#### **EACH PARTY SHALL CONDUCT ITS OWN INDEPENDENT INVESTIGATION AND DUE DILIGENCE.**

Any party contemplating or under contract or in escrow for a transaction is urged to verify all information and to conduct their own inspections and Investigations including through appropriate third party independent professionals selected by such party. All financial data should be verified by the party including by obtaining and reading applicable documents and reports and consulting appropriate independent professionals. Landmark Commercial makes no warranties and/or representations regarding the veracity, completeness, or relevance of any financial data or assumptions. Landmark Commercial does not serve as a financial advisor to any party regarding any proposed transaction. All data and assumptions regarding financial performance, including that used for financial modeling purposes, may differ from actual data or performance. Any estimates of market rents and/or projected rents that may be provided to a party do not necessarily mean that rents can be established at or increased to that level. Parties must have evaluate any applicable contractual and governmental limitations as well as market conditions, vacancy factors and other issues in order to determine rents from or for the property.

Legal questions should be discussed by the party with an attorney. Tax questions should be discussed by the party with a certified public accountant of tax attorney. Title questions should be discussed by the party with a title officer or attorney. Questions regarding the condition of the property and whether the property complies with applicable governmental requirements should be discussed by the party with appropriate engineers, architects, contractors, other consultants and governmental agencies. All properties and services are marketed by Landmark Commercial in compliance with all applicable fair housing and equal opportunity laws.



## INDUSTRIAL OUTDOOR STORAGE FACILITY AVAILABLE

For More Information Contact:

**JASON GRACE, CCIM, SIOR**  
CEO & MANAGING PRINCIPAL  
E: [JGRACE@LANDMARKCR.COM](mailto:JGRACE@LANDMARKCR.COM)  
C: 717.421.1943

**MICHAEL CURRAN, SIOR**  
PRESIDENT & EXECUTIVE MANAGING DIRECTOR  
E: [MCURRAN@LANDMARKCR.COM](mailto:MCURRAN@LANDMARKCR.COM)  
C: 717.805.9277

**JESSICA LILLY, MBA**  
SENIOR ASSOCIATE  
E: [JLILLY@LANDMARKCR.COM](mailto:JLILLY@LANDMARKCR.COM)  
C: 717.571.4324

---

LANDMARK COMMERCIAL REALTY  
425 N 21st STREET, SUITE 302  
CAMP HILL, PA 17011  
P: 717.731.1990 F: 717.731.8765

