

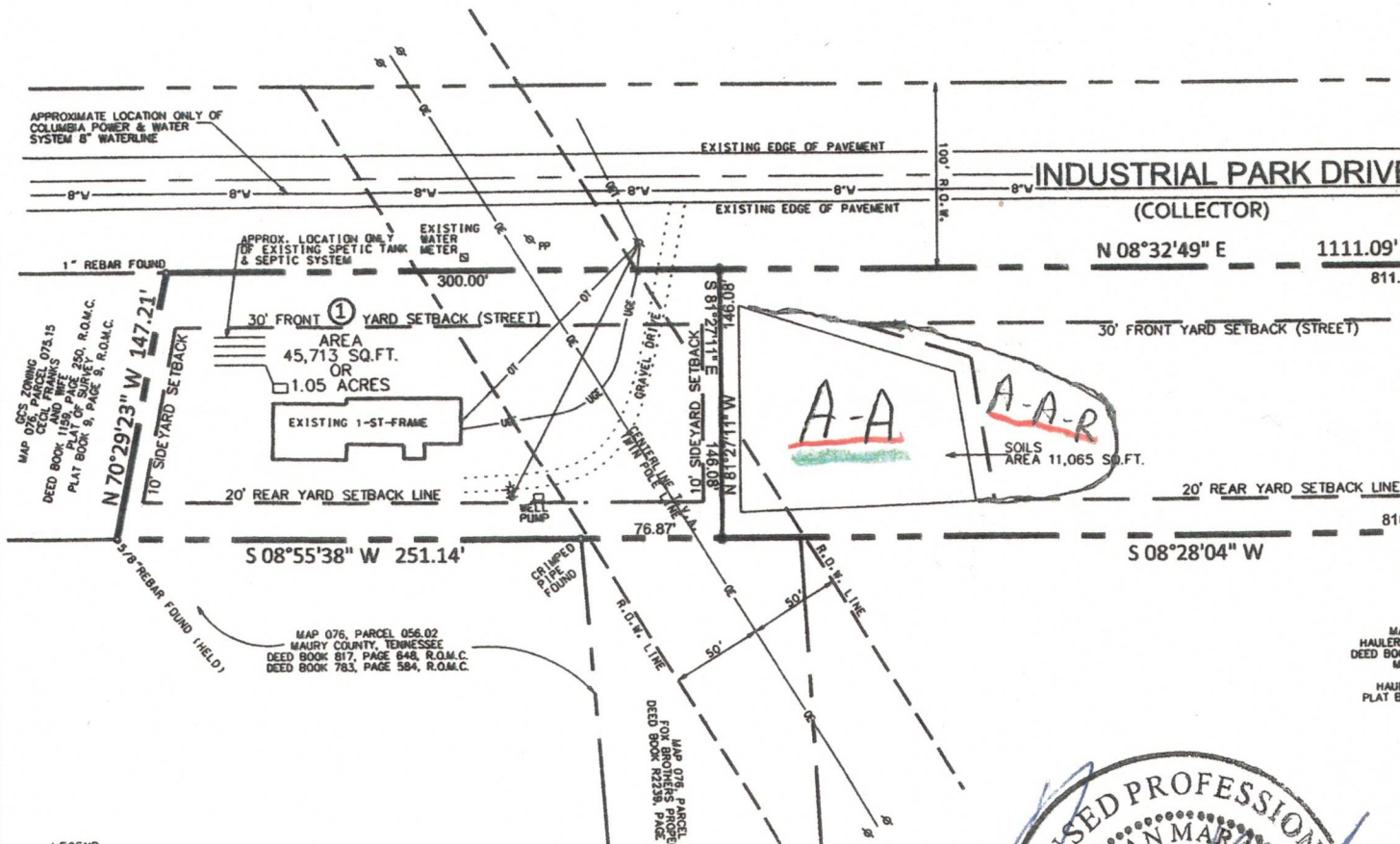
VICINITY MAP  
(NOT TO SCALE)

**LEGEND**

- MPI - estimated minutes per inch
- ≥ - greater than or equal to
- A-A - Armour - Arrington 0-81.  
45 MPI To 26" Rock ≥ 36"
- A-A-R - Armour - Arrington - Rocky  
> 75 MPI (Needs Further Investigation)

**Notes**

- 1) This is a HIGH INTENSITY SOILS INVESTIGATION.



MAP 076, PARCEL 073.15  
MAURY COUNTY, TENNESSEE  
DEED BOOK 1159, PAGE 250, R.O.M.C.  
PLAY BOOK 9, PAGE 5, R.O.M.C.

MAP 076, PARCEL 056.02  
MAURY COUNTY, TENNESSEE  
DEED BOOK 817, PAGE 843, R.O.M.C.  
DEED BOOK 783, PAGE 584, R.O.M.C.

MAP 076, PARCEL 055.00  
FOR BRN R225R, PAGE 1083, R.O.M.C.

- LEGEND**
- ⊙ (P-C) 3/4" REBAR SET WITH CAP NCS 1649
  - ⊙ (P-F) IRON PIN (FOUND)
  - ⊙ (M-C) MONUMENT (SET)
  - ⊙ (M-F) MONUMENT (FOUND)
  - ⊙ (S-S) SANITARY SEWER MANHOLE
  - ⊙ (C-B) CATCH BASIN
  - ⊙ (D-C) DOUBLE CATCH BASIN
  - ⊙ (T-C) TRIPLE CATCH BASIN
  - ⊙ (C-O) SANITARY SEWER CLEANOUT
  - ⊙ (L-P) LIGHT STANDARD
  - ⊙ (P-T) POWER/TELEPHONE POLE
  - ⊙ (G-W) GUY WIRE
  - ⊙ (U-T) UNDERGROUND TELEPHONE BOX
  - ⊙ (T-R) ELECTRIC TRANSFORMER
  - ⊙ (A-C) AIR CONDITIONER
  - ⊙ (F-H) FIRE HYDRANT

**Norman Marable**  
Soils Consultant  
P.O. Box 481  
Columbia, TN 38402

