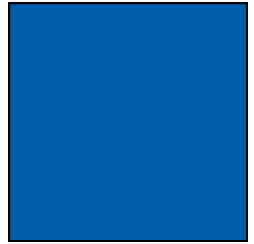


OFFICE CONDO FOR SALE

303 Middletown Park Place, Suite E
Louisville, KY 40243



- 860± SF office space in highly sought after Middletown
- Property offers reception, waiting area, 2 private offices, conference room, restroom with shower, kitchen and storage
- End cap with lots of windows throughout.
- Located just off Shelbyville Road, behind Paul's Fruit Market, with easy access to both I-265 and I-64.
- This condo is ideal for a professional practice
- The office park offers ample surface parking, exterior building signage opportunities, and well-maintained common areas
- Numerous nearby amenities for dining, shopping and services along Shelbyville Road.

Rhonda Karageorge, CCIM
(502) 744-9175
(502) 379-6003
rk@ccre.biz

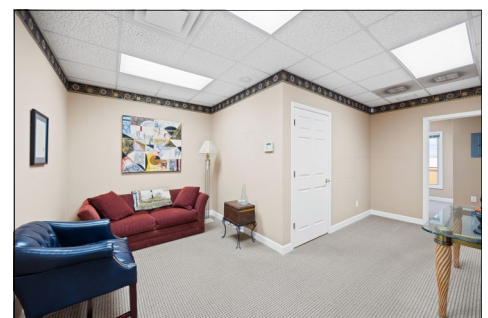
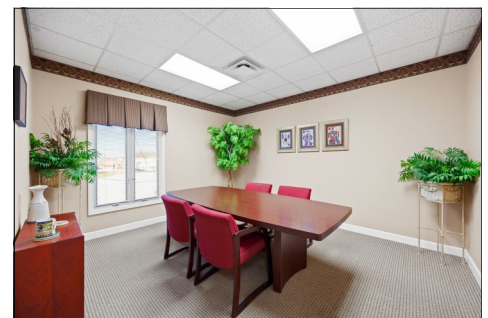
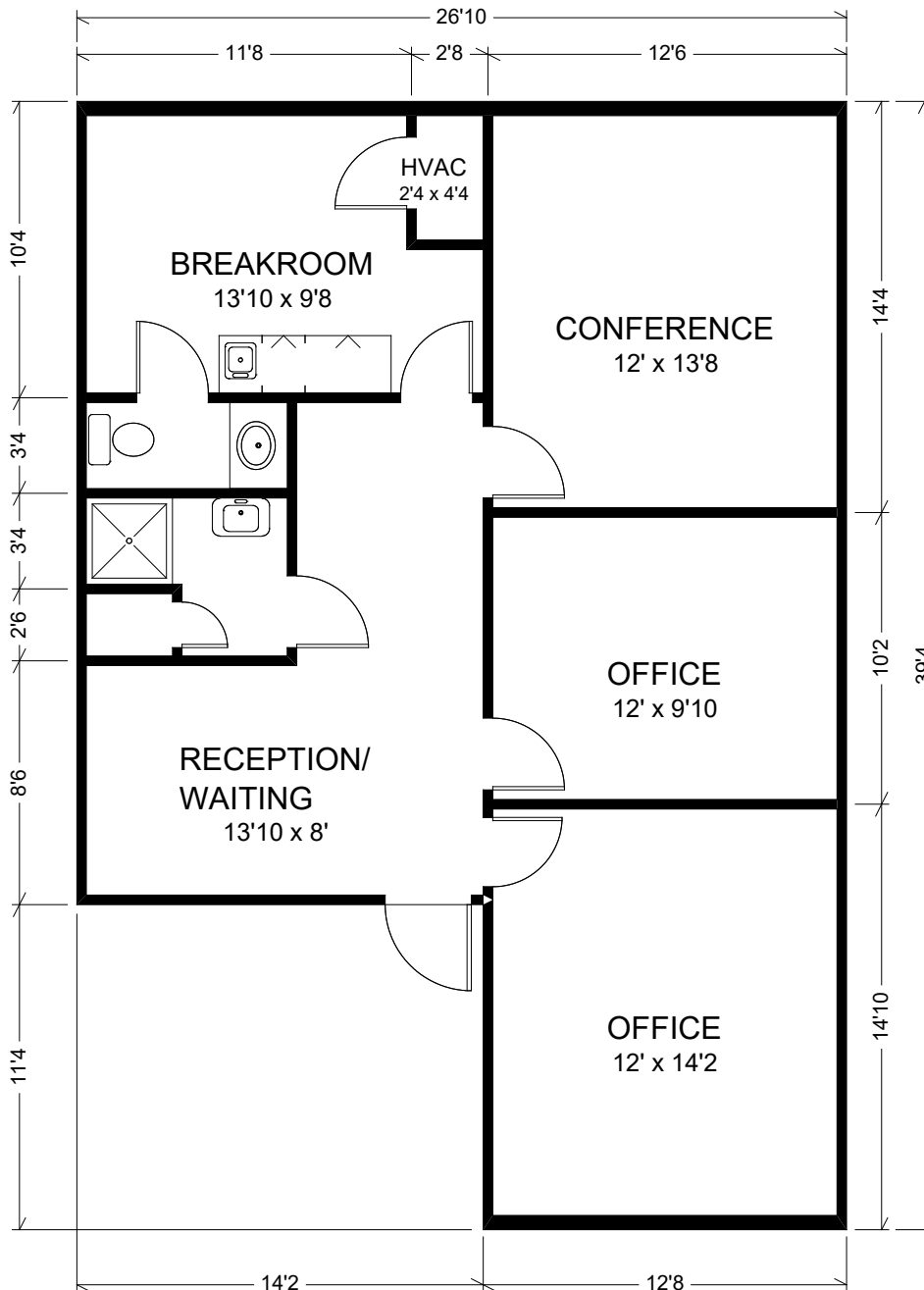
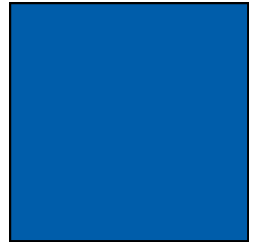
**COMMONWEALTH
COMMERCIAL
REAL ESTATE**

Commonwealth Commercial Real Estate, 10444 Bluegrass Parkway, Louisville, Kentucky 40299
Phone: (502) 379-6000 | www.ccre.biz | Licensed in Kentucky and Indiana

We obtained this information from sources we believe are reliable, however, we make no guarantee, warranty or representation about it. It is provided subject to the possibility of errors, omissions, change of price, rental or other conditions, prior sale, lease or financing, or withdrawal without notice. Images or plans presented are not architectural or "as built" drawings and are presented to give an approximation of space/dimensions and, therefore, no warranty or representation, express or implied, is made to their accuracy. It is your responsibility to independently verify that the property is acceptable to you and for your intended use.

OFFICE CONDO FOR SALE

303 Middletown Park Place, Suite E
Louisville, KY 40243



Commonwealth Commercial Real Estate, 10444 Bluegrass Parkway, Louisville, Kentucky 40299

Phone: (502) 379-6000 | www.ccre.biz | Licensed in Kentucky and Indiana

We obtained this information from sources we believe are reliable, however, we make no guarantee, warranty or representation about it. It is provided subject to the possibility of errors, omissions, change of price, rental or other conditions, prior sale, lease or financing, or withdrawal without notice. Images or plans presented are not architectural or "as built" drawings and are presented to give an approximation of space/dimensions and, therefore, no warranty or representation, express or implied, is made to their accuracy. It is your responsibility to independently verify that the property is acceptable to you and for your intended use.