

New Listing!

3 Parcels

124 Addison Avenue
Twin Falls, ID 83301
www.cbre.com

Retail Development Opportunity



6.43

Total Acreage

Call

Listing Agents for Pricing

C-1

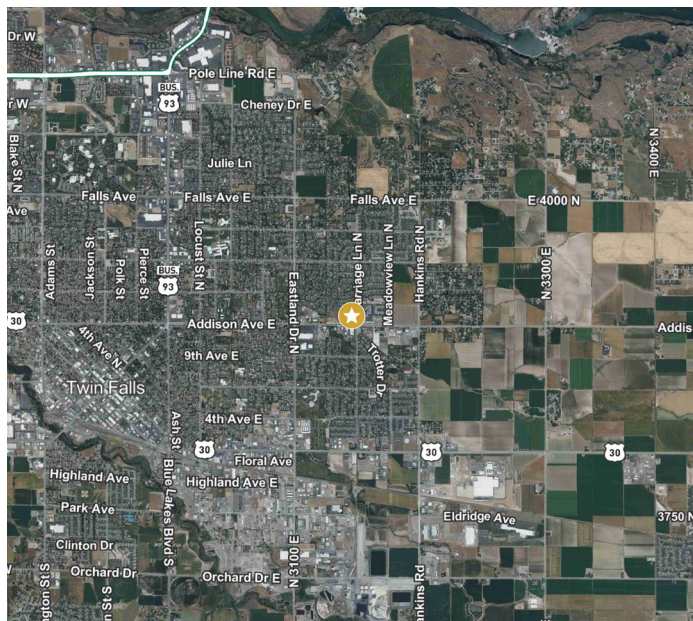
Zoning

The Offering

Located at the highly visible, signalized corner of Addison Avenue and Carriage Lane in Twin Falls, Idaho, this offering includes three parcels totaling 6.43 acres. The large 5.25-acre parcel presents a prime development opportunity as it is ideally situated in a rapidly growing area of the city and surrounded by new residential communities and supported by a master plan focused on housing expansion. The site also benefits from strong traffic exposure and excellent accessibility. With power, water, and fiber optics already stubbed to the property, it's well-positioned for commercial or mixed-use development that complements the area's momentum and long-term growth potential.

Property Highlights

- + For Sale, Lease, or BTS
- + Highly visible lots on corner of Addison Ave & Carriage Lane
- + Development opportunity on 5.25 AC parcel
- + Prime Signalized Corner at Addison Avenue
- + Power and water stubbed
- + Fiber Optics
- + Master plan
- + Centered around new housing growth



Contact Us

Melanie Nielsen

CBRE
+1 208 678 6290
melanie.nielsen@cbre.com

Brian Anderson

CBRE
+1 801 869 8038
cbrian.anderson@cbre.com

Chad Carper

Kiemle Hagood
+1 509 991 2222
chad.carper@kiemlehagood.com

© 2025 CBRE, Inc. All rights reserved. This information has been obtained from sources believed reliable, but has not been verified for accuracy or completeness. You should conduct a careful, independent investigation of the property and verify all information. Any reliance on this information is solely at your own risk. CBRE and the CBRE logo are service marks of CBRE, Inc. All other marks displayed on this document are the property of their respective owners, and the use of such logos does not imply any affiliation with or endorsement of CBRE. Photos herein are the property of their respective owners. Use of these images without the express written consent of the owner is prohibited.