



## GROUND LEASE PAD SITE

5111 E. Viking Blvd. ✦ Wyoming, MN 55092

### ✦ GROUND LEASE PAD SITE

- .47 Acres Available
- Pad Ready
- Ground Lease: Rates Negotiable
- Located adjacent to DQ Grill & Chill
- Free standing with Drive-Thru ability

### ✦ AMENITIES/SITE INFO

- Direct visibility from interstate exit
- Close proximity to Fairview Hospital
- Pylon signage available
- Ample surface parking
- Area Merchants: DQ Grill & Chill, McDonald's, Subway, Linwood Pizza

WAYNE D. KUYKENDALL

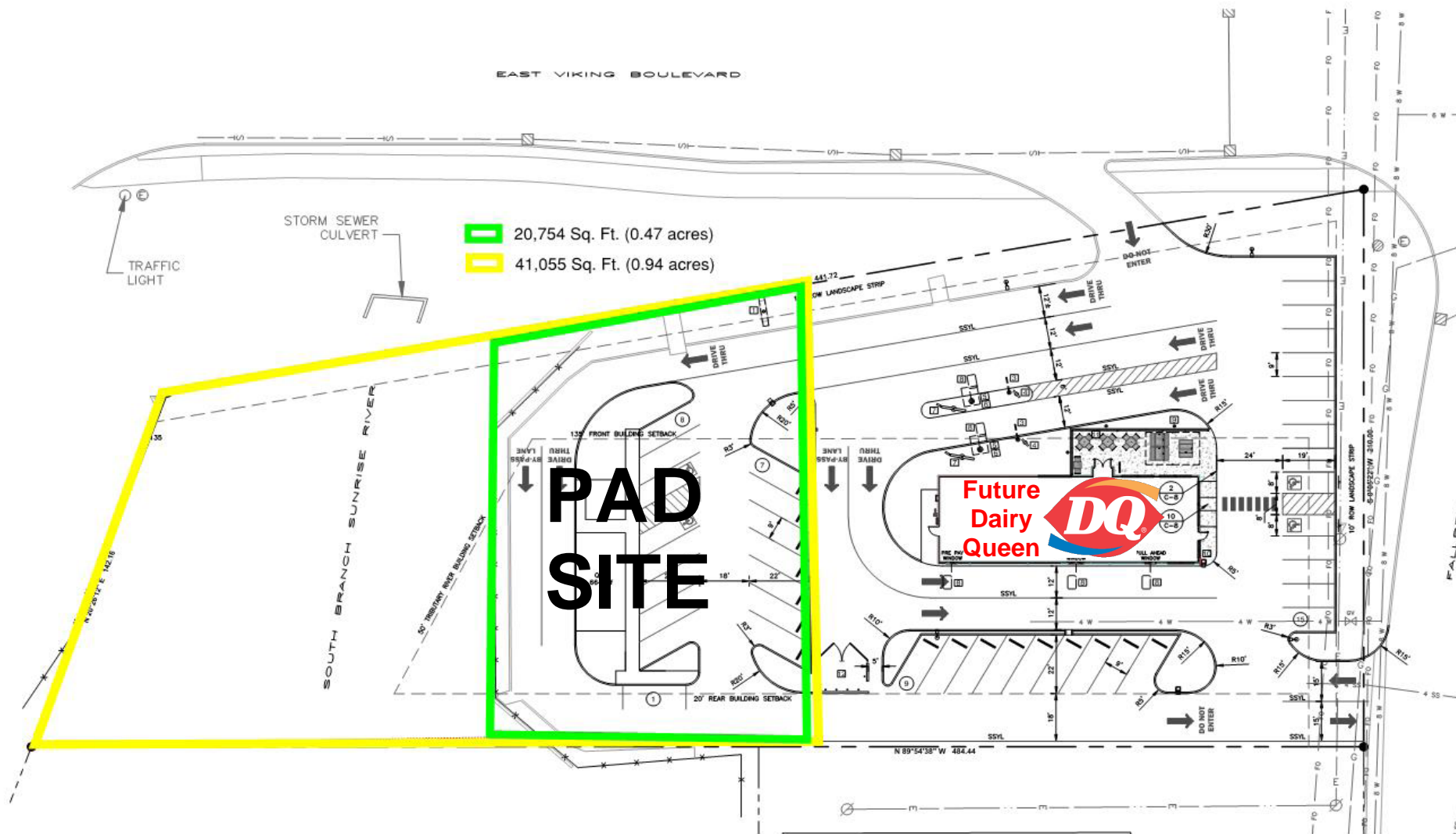
(952) 767-2839

wayne.kuykendall@frauenshuh.com



FRAUENSHUH  
COMMERCIAL REAL ESTATE

5111 E. VIKING BLVD. ♦ REDEVELOPMENT PLAN  
Wyoming ♦ MN



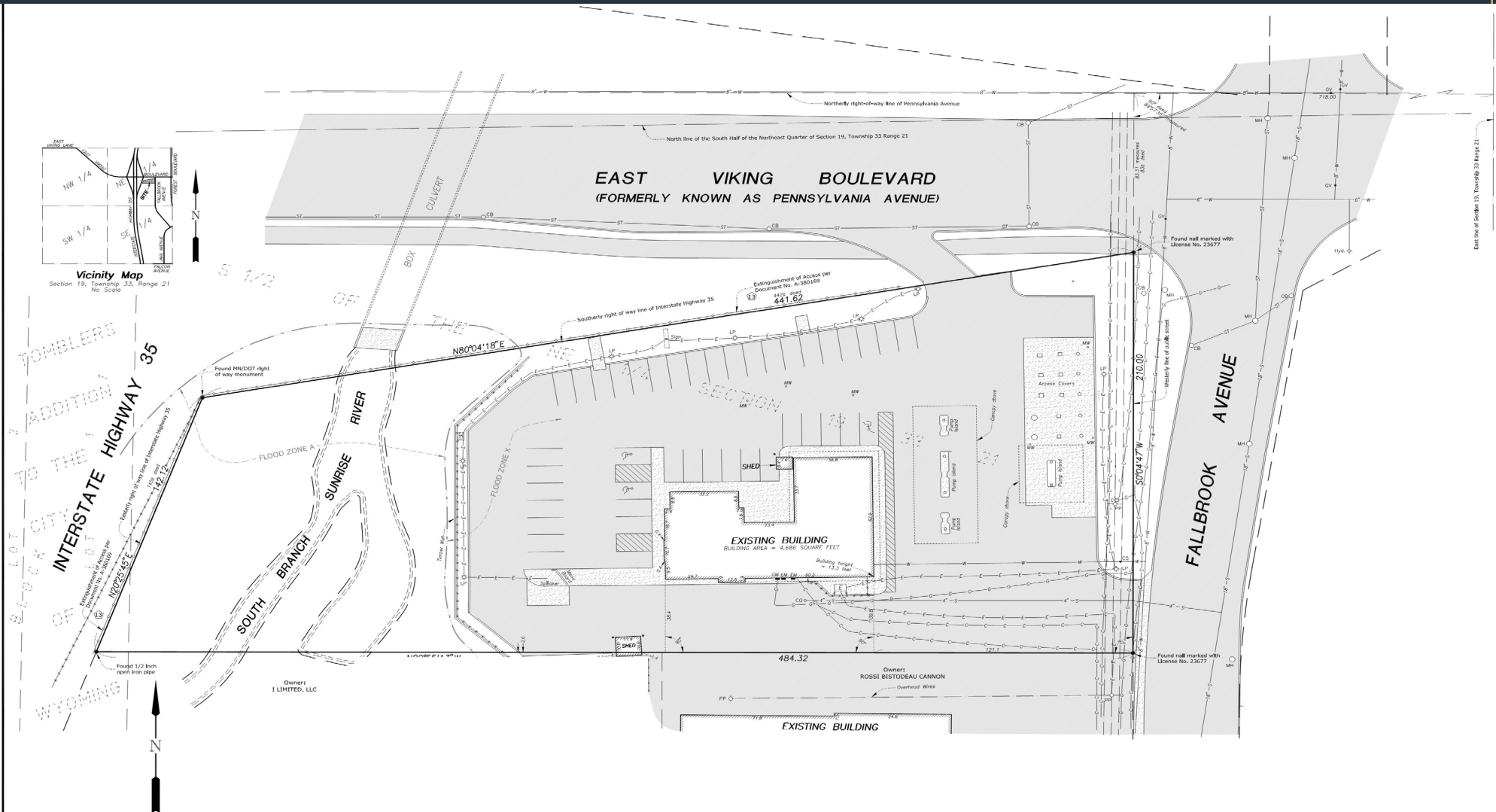
WAYNE D. KUYKENDALL  
(952) 767-2839  
wayne.kuykendall@frauenshuh.com

ESTD  1983  
**FRAUENSHUH**  
COMMERCIAL REAL ESTATE



# 5111 E. VIKING BLVD. ✦ EXISTING SURVEY

Wyoming ✦ MN



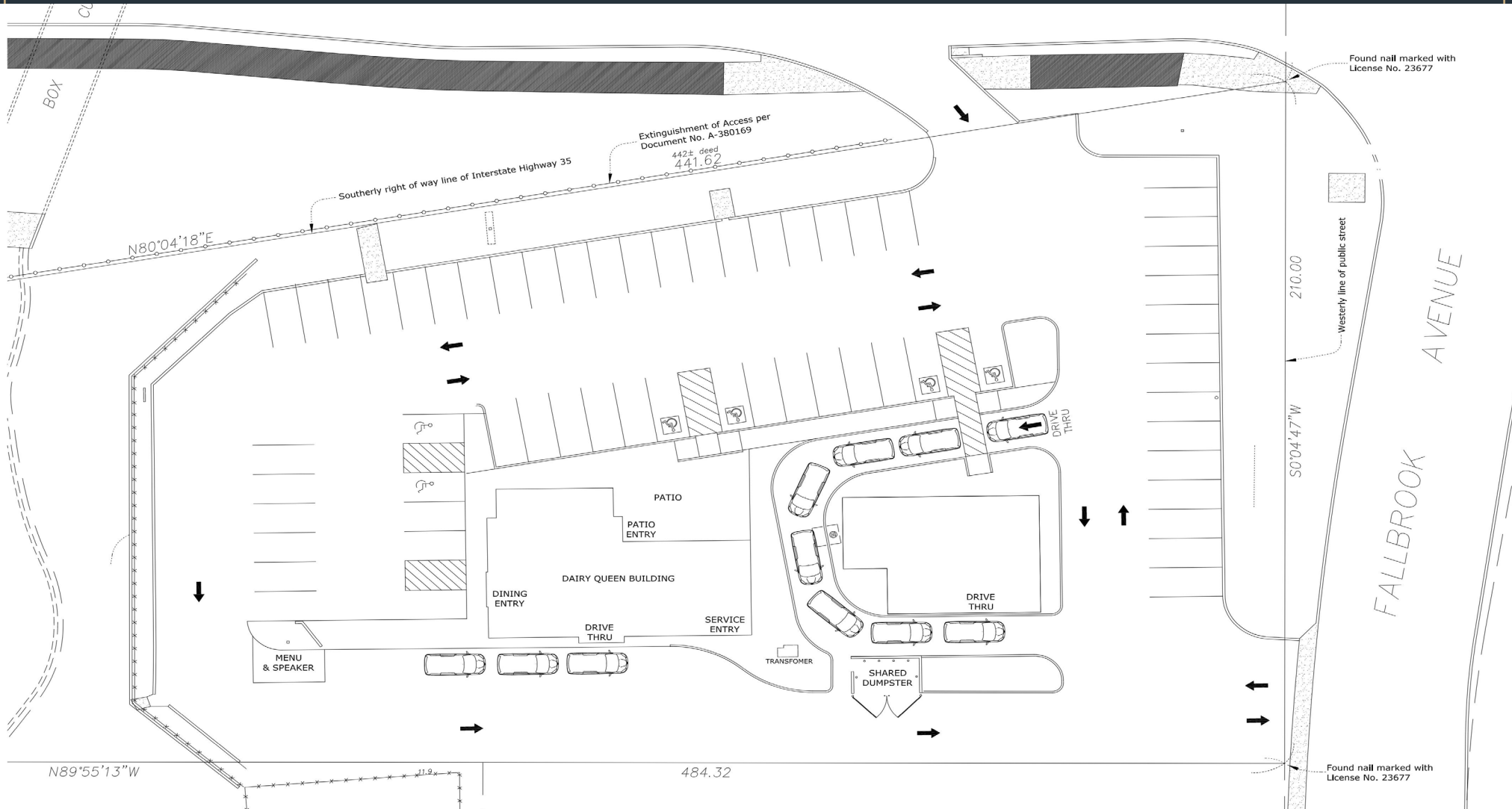
WAYNE D. KUYKENDALL  
(952) 767-2839  
wayne.kuykendall@frauenshuh.com



FRAUENSHUH  
COMMERCIAL REAL ESTATE

# 5111 E. VIKING BLVD. ♦ SITE PLAN

Wyoming ♦ MN



WAYNE D. KUYKENDALL  
(952) 767-2839  
wayne.kuykendall@frauenshuh.com

