



Westfield Elm Office & Medical

189 Elm St, Westfield, NJ 07090

Steven Cohen
Westfield Elm LLC
New York,,
stevenscohen@verizon.net
(917) 780-4000



Westfield Elm Office & Medical

\$29.00 - \$35.00 /SF/Yr

Wonderful Office and Medical Building in the heart of Westfield. Join our group of successful professionals and Doctors at our building. Minutes by foot from NJT Rail. On site private tenant Parking!...

- In the Heart of Westfield! In addition to onsite private tenant Parking there is a Municipal parking lot up the street!



Rental Rate: \$29.00 - \$35.00 /SF/Yr

Min. Divisible: 280 SF

Property Type: Office

Property Subtype: Medical

Building Class: B

Rentable Building Area: 10,448 SF

Year Built: 1964

Walk Score ©: 96 (Walker's Paradise)

Transit Score ©: 40 (Some Transit)

Rental Rate Mo: \$2.42 USD/SF/Mo

Ground

Space Available	1,909 SF
Rental Rate	\$29.00 /SF/Yr
Date Available	Now
Service Type	Modified Gross
Space Type	Relet
Space Use	Office/Medical
Lease Term	Negotiable

Office suite with bright windowed reception area. Ideal for office of medical use. Several offices have sinks. Recently renovated New Floors and Paint throughout Great location. With Onsite Tenant Parking!

1

1st Floor

Space Available	280 - 700 SF
Rental Rate	\$35.00 /SF/Yr
Date Available	Now
Service Type	Modified Gross
Space Type	Relet
Space Use	Office/Medical
Lease Term	Negotiable

Windowed Brightly lit offices. Ideal for a professionals, therapists, attorneys, accountants, medical or general office use.

2

1st Floor

Space Available	2,255 SF
Rental Rate	\$29.00 /SF/Yr
Date Available	Now
Service Type	Modified Gross
Built Out As	Standard Office
Space Type	Relet
Space Use	Office/Medical
Lease Term	Negotiable

Windowed Brightly lit offices ideal for Office or Medical use with many amenities already in place. Offices have sinks!

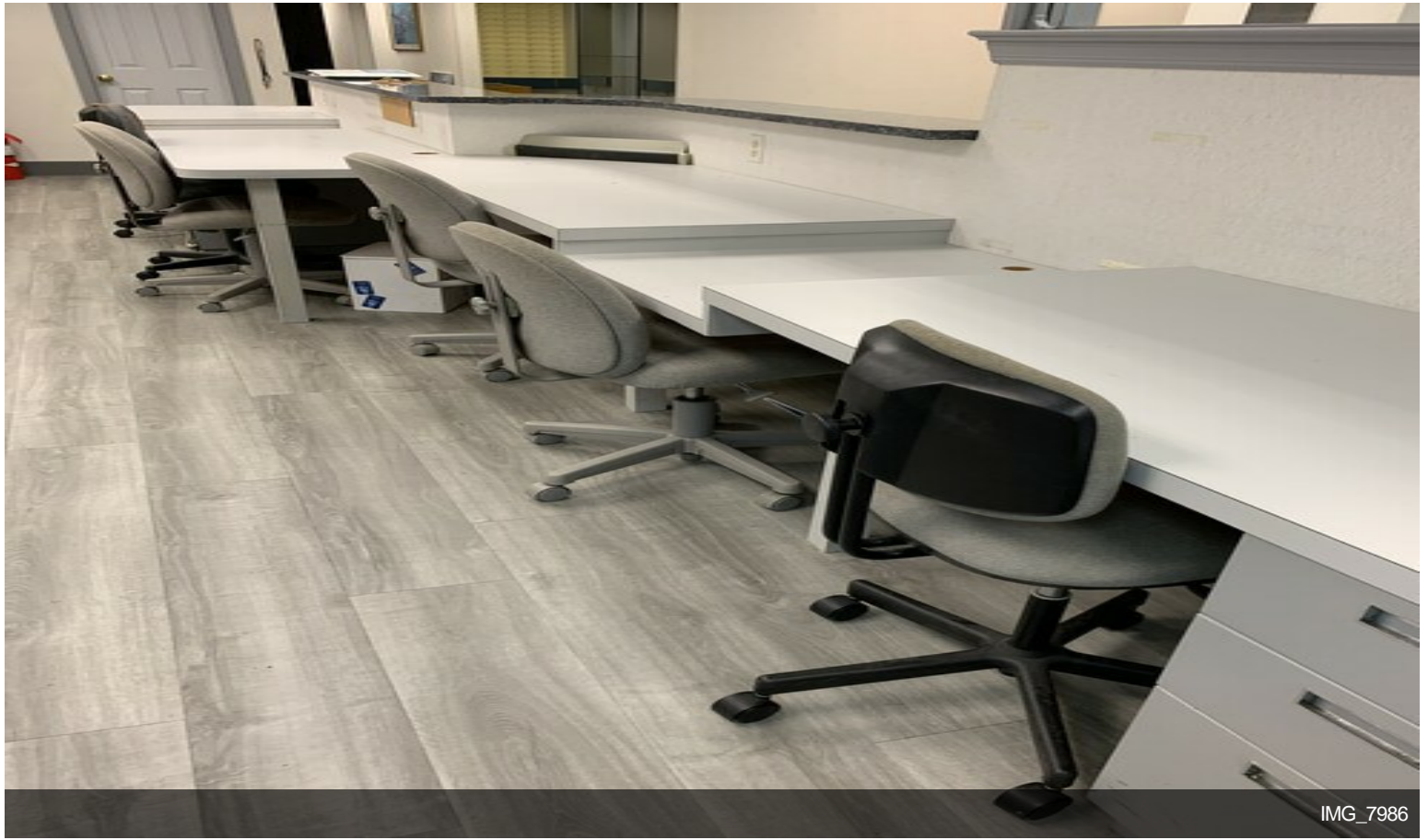
3



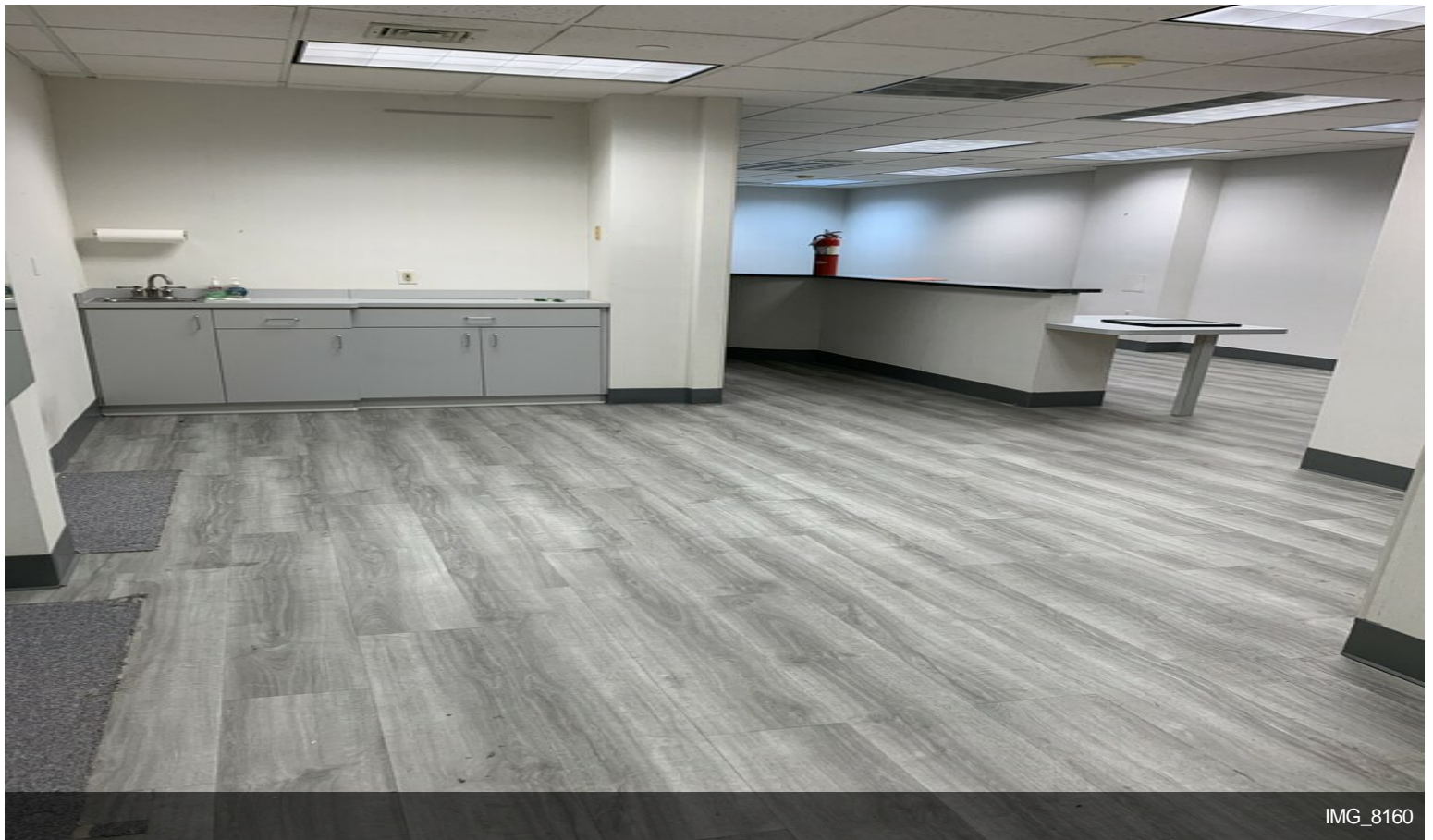
189 Elm St, Westfield, NJ 07090

Wonderful Office and Medical Building in the heart of Westfield. Join our group of successful professionals and Doctors at our building.
Minutes by foot from NJT Rail. On site private tenant Parking!

Property Photos



IMG_7986

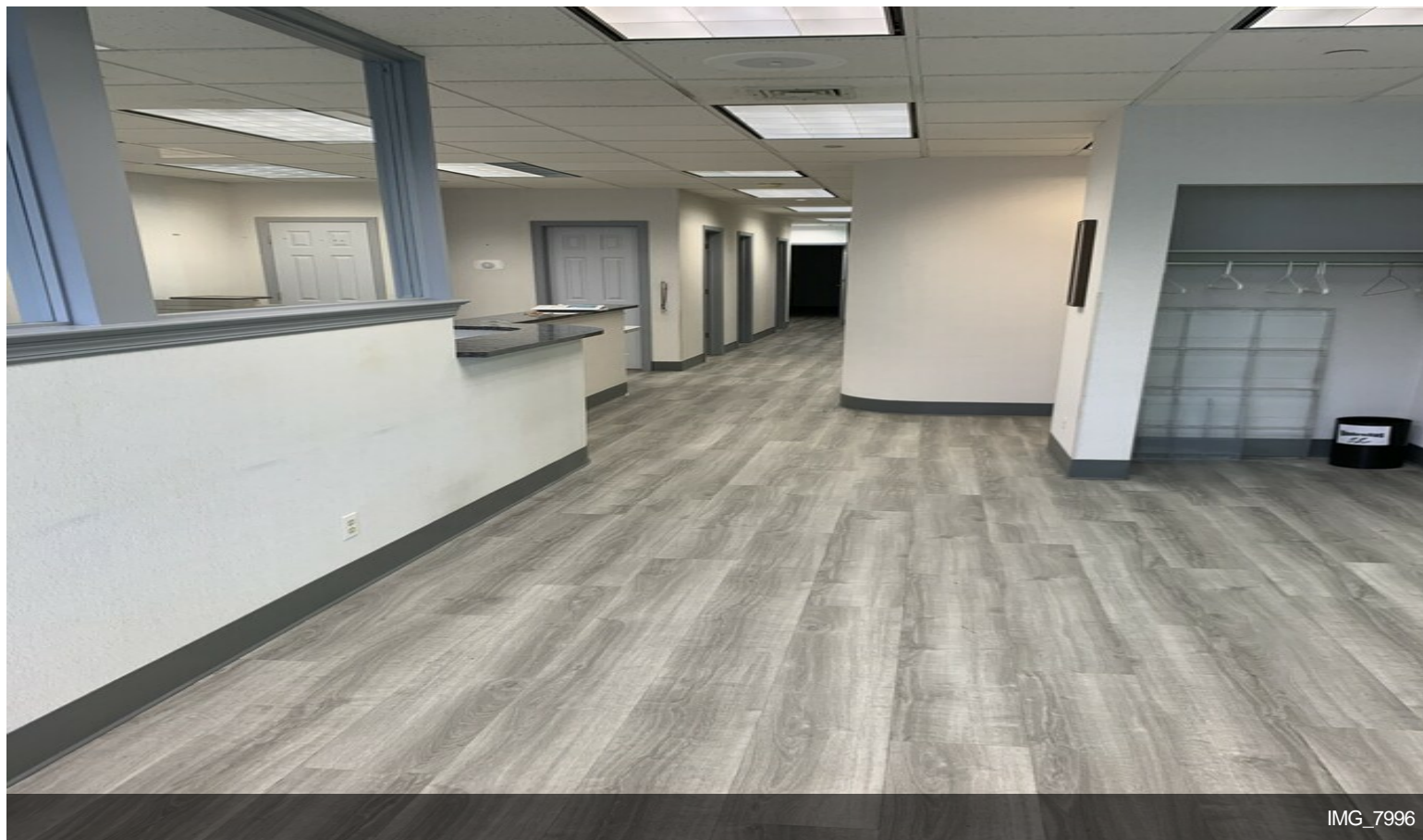


IMG_8160

Property Photos



Building Photo



IMG_7996

Property Photos

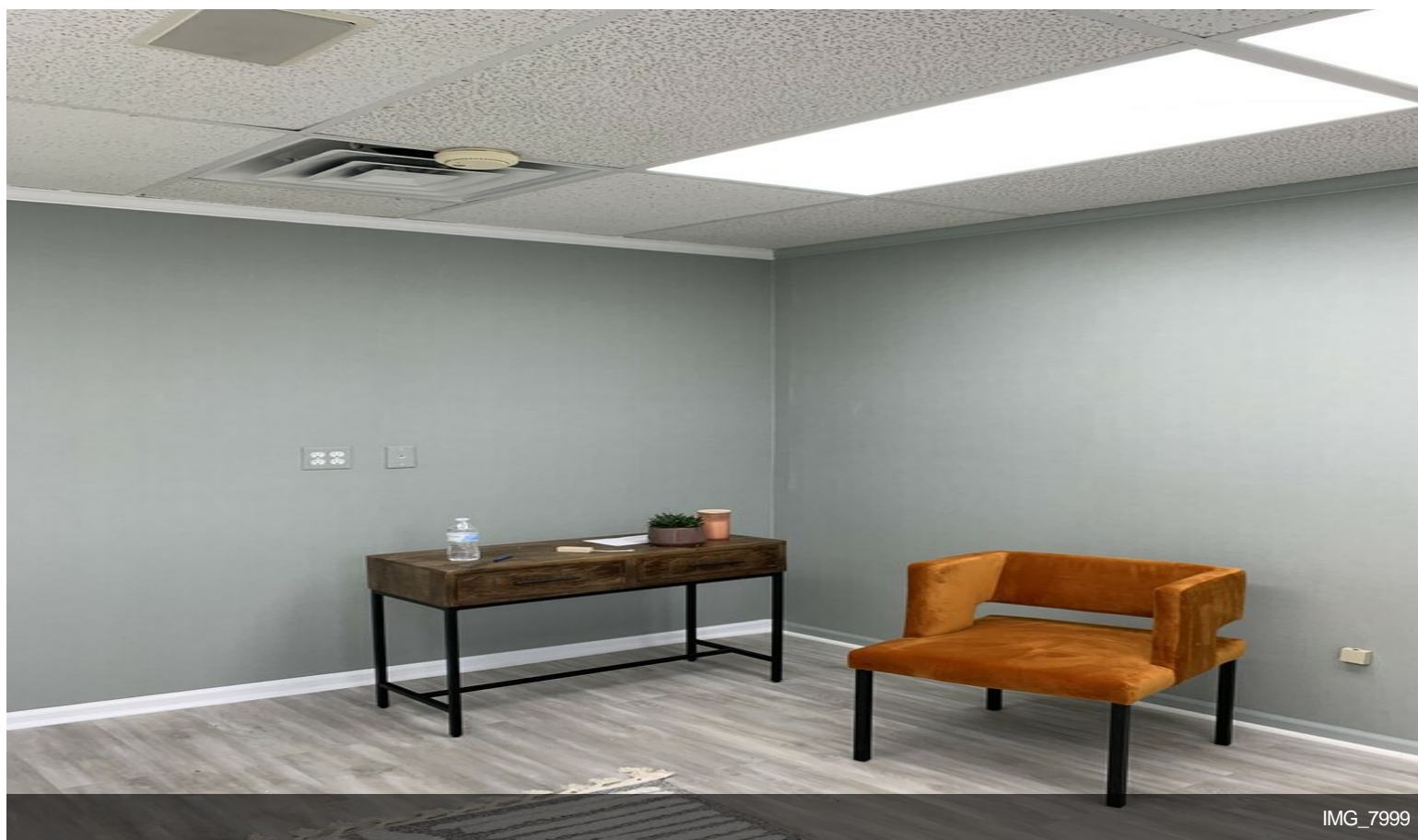


IMG_7986

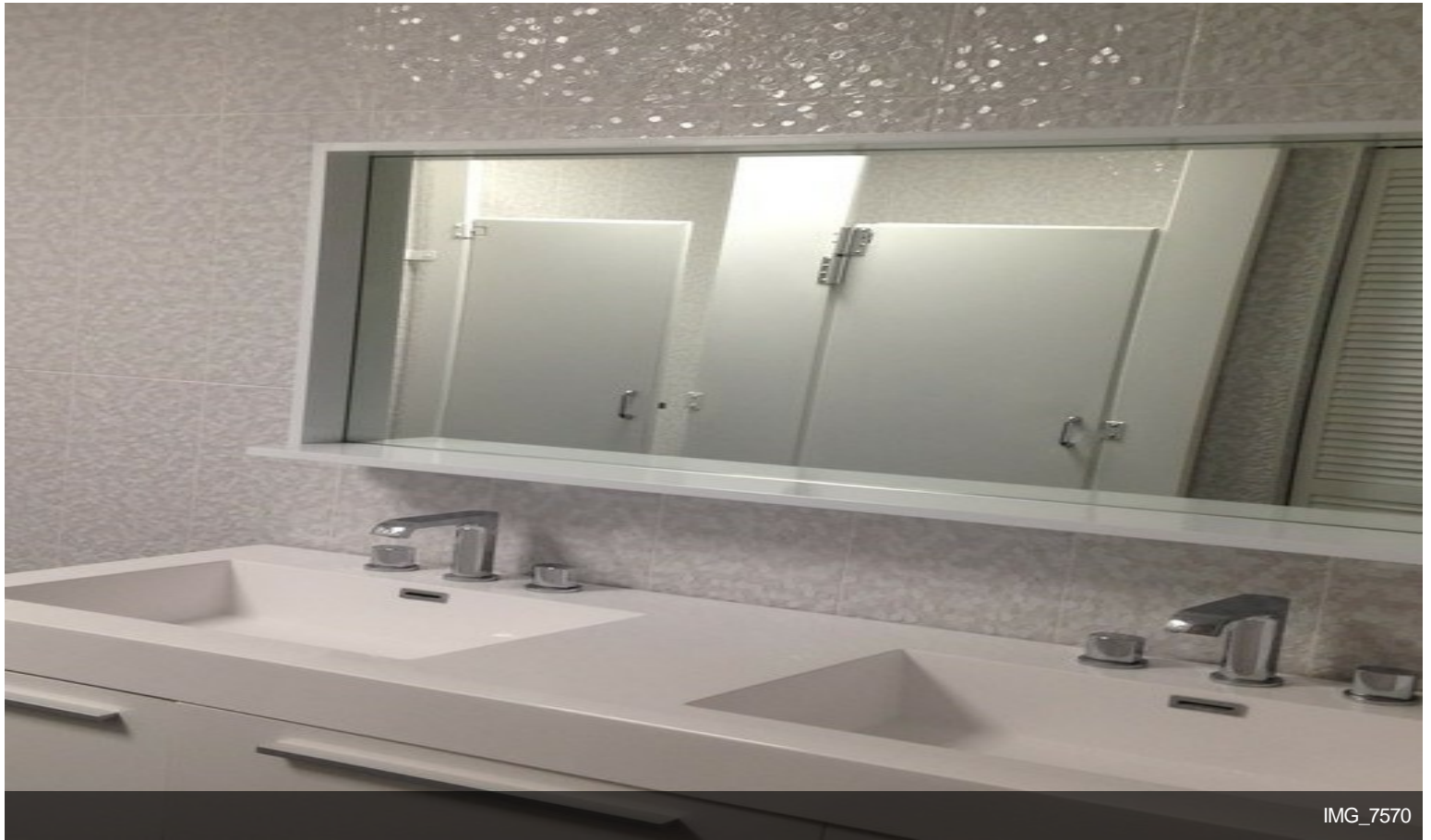


IMG_8190

Property Photos



Property Photos



Property Photos



IMG_1247



IMG_7220

Property Photos



IMG_6979

Parcel:20-02505-0000-00008



Plat Map

TAX MAP
TOWN OF WEST UNION
UNION COUNTY, NEW JERSEY