

FOR LEASE

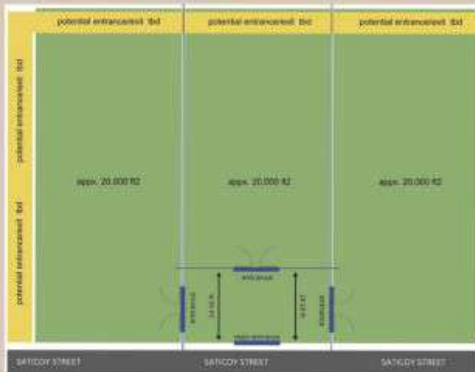
VACANT LAND PARCEL

Situated conveniently near Tarzana, Northridge, Winnetka, and Sherman Oaks, with nearly 60,000 square feet of vacant lot space, this property is perfect for storage or parking purposes. Located in a convenient and easily accessible area, this flat-level land is ideal for storing machinery equipment and vehicles ranging from everyday automobiles to trailers and commercial trucks.

Some advantages of this land are its pristine, undeveloped state for the ultimate vehicle traction. The presence of a secure fence surrounding the property ensures a secure environment, you can have peace of mind knowing that your belongings are safe and secure. Furthermore, the lessee has round-the-clock access to the land.

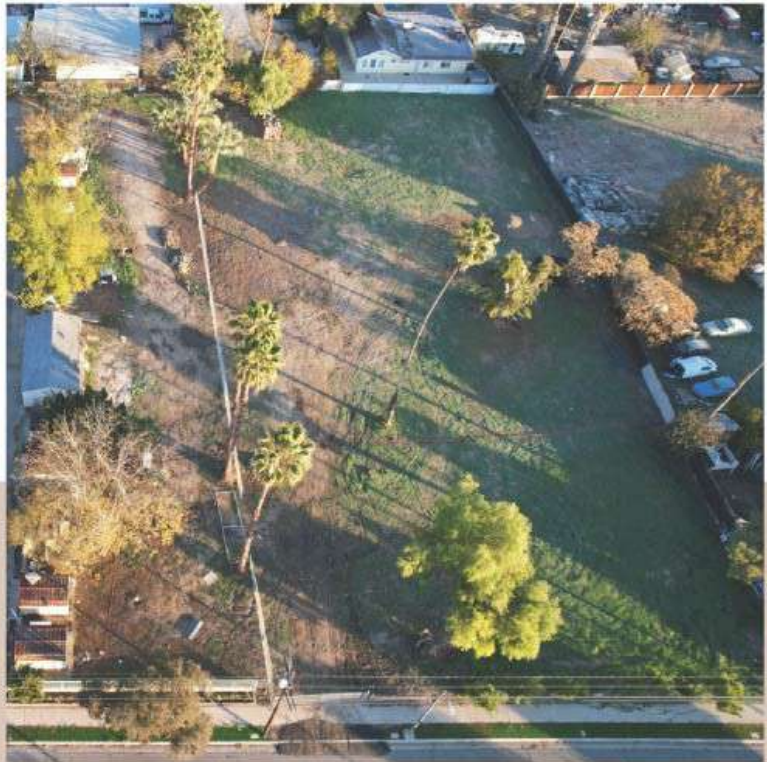
This land parcel is currently being divided into three separate sectors, with each unit consisting of approximately 20,000 sq ft of space and priced at 1/3 of the original parcel.

Each section will be equipped with its own



personal entrance, and there are ongoing discussions regarding the possibility of adding a side entrance as an additional feature.

Whether you're a small business owner looking for extra storage space or a homeowner in need



of additional parking for your vehicles, this vacant lot is the ideal solution. Don't miss out on this opportunity to expand your storage options and streamline your operations!

Contact us today to learn more about this vacant lot of land perfect for parking storage. Don't wait, secure your spot now before it's too late!

contact

☎ (323) 899 - 3200