

HIGHWAY 42 SOUTH

LOCUST
GROVE, GA
30248

Industrial Land For Lease
15± Acres

TOMMY BARROW

Advisor
210.394.9943
tbarrow@kingindustrial.com

BRYAN MARSHBURN, SIOR, CCIM

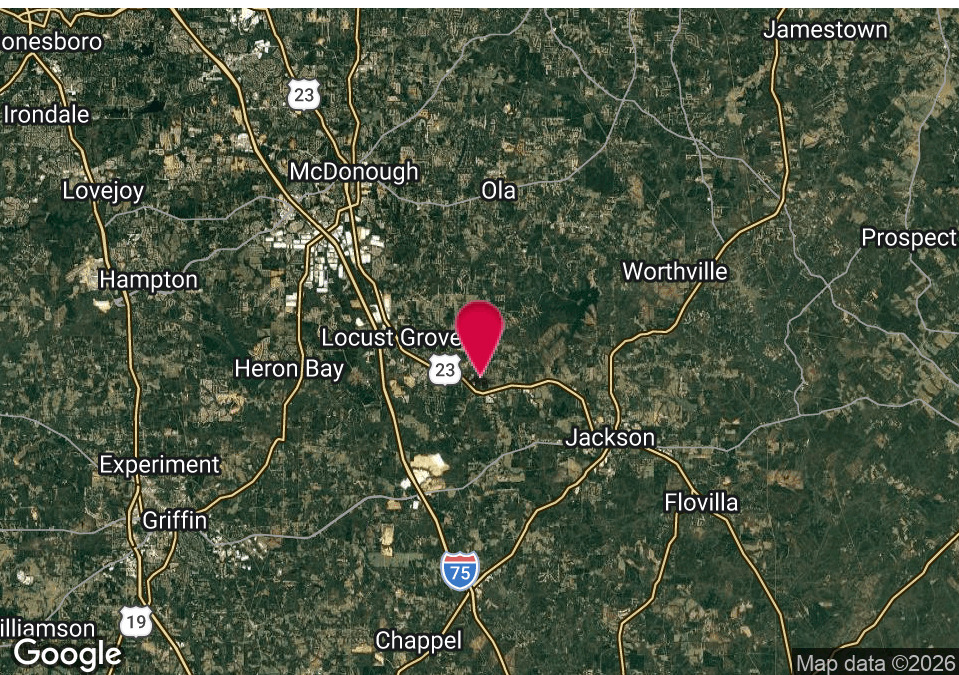
Senior Vice President
404.942.2044
bmarshburn@kingindustrial.com

King Industrial
Realty, Inc.

Industrial • Commercial • Investment
404.942.2000 | kingindustrial.com

15± ACRES





PROPERTY HIGHLIGHTS

- 2 Parcels Totaling 15± Acres
- 10± Usable Acres
- Zoned Industrial
- Approved for Truck Parking
- Grading & Site Work Complete
- Additional 6± Acres For Sale
- 6± Miles to Highway 16 & I-75, Exit 205
- 6± Miles to Bill Gardner Parkway via Hwy 42, Exit 212 / I-75
- 212± Miles to the Port of Savannah

TOMMY BARROW

Advisor

210.394.9943

tbarrow@kingindustrial.com

BRYAN MARSHBURN, SIOR, CCIM

Senior Vice President

404.942.2044

bmarshburn@kingindustrial.com

Every effort has been made to provide accurate information, but no liability is assumed for errors or omissions.



Industrial • Commercial • Investment
404.942.2000 | kingindustrial.com



TOMMY BARROW

Advisor

210.394.9943

tbarrow@kingindustrial.com

BRYAN MARSHBURN, SIOR, CCIM

Senior Vice President

404.942.2044

bmarshburn@kingindustrial.com



Industrial • Commercial • Investment
404.942.2000 | kingindustrial.com

Every effort has been made to provide accurate information, but no liability is assumed for errors or omissions.



Additional 6± Acres For Sale

SUBJECT
15± ACRES

TOMMY BARROW

Advisor

210.394.9943

tbarrow@kingindustrial.com

BRYAN MARSHBURN, SIOR, CCIM

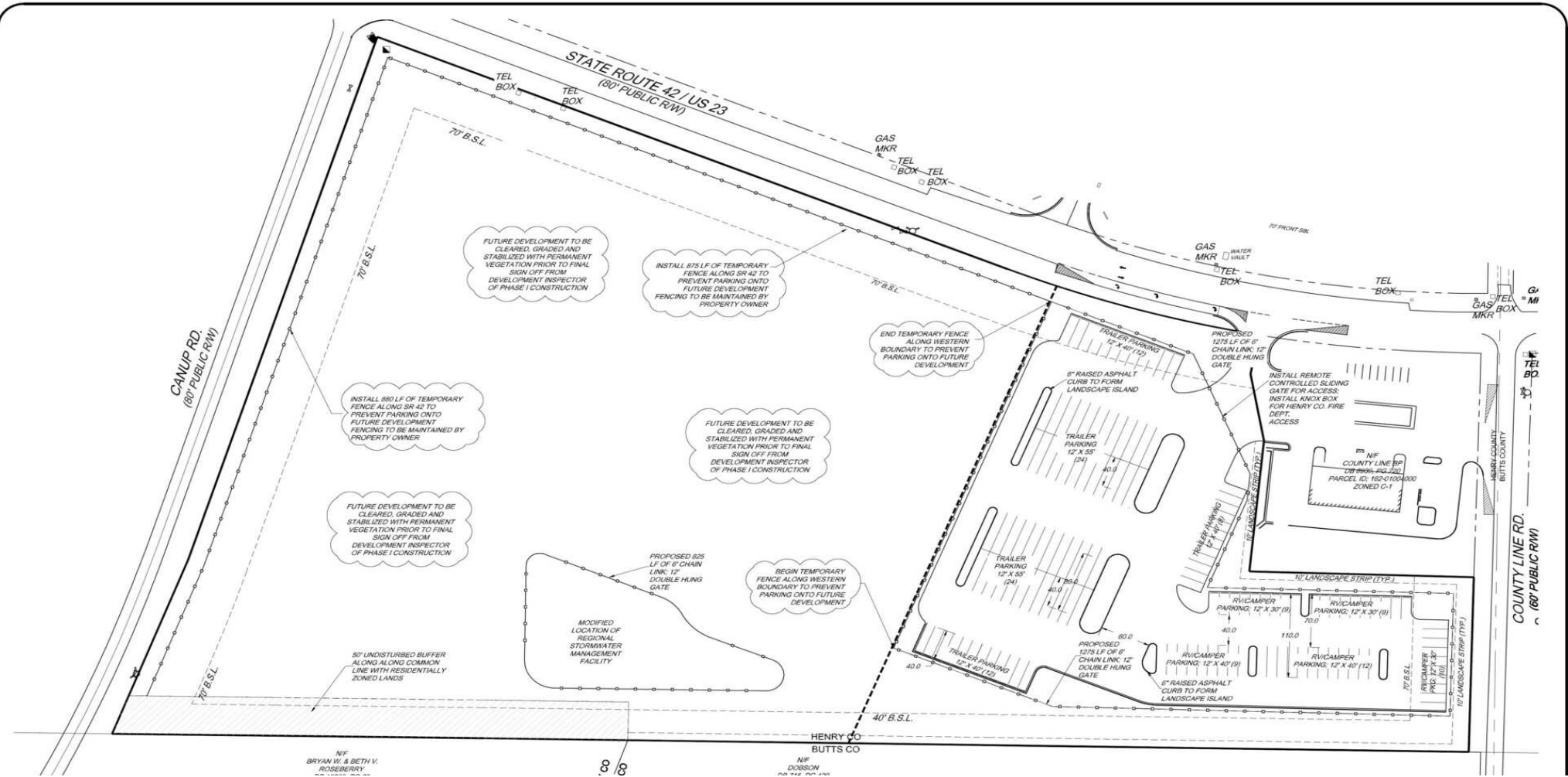
Senior Vice President

404.942.2044

bmarshburn@kingindustrial.com



Industrial • Commercial • Investment
404.942.2000 | kingindustrial.com

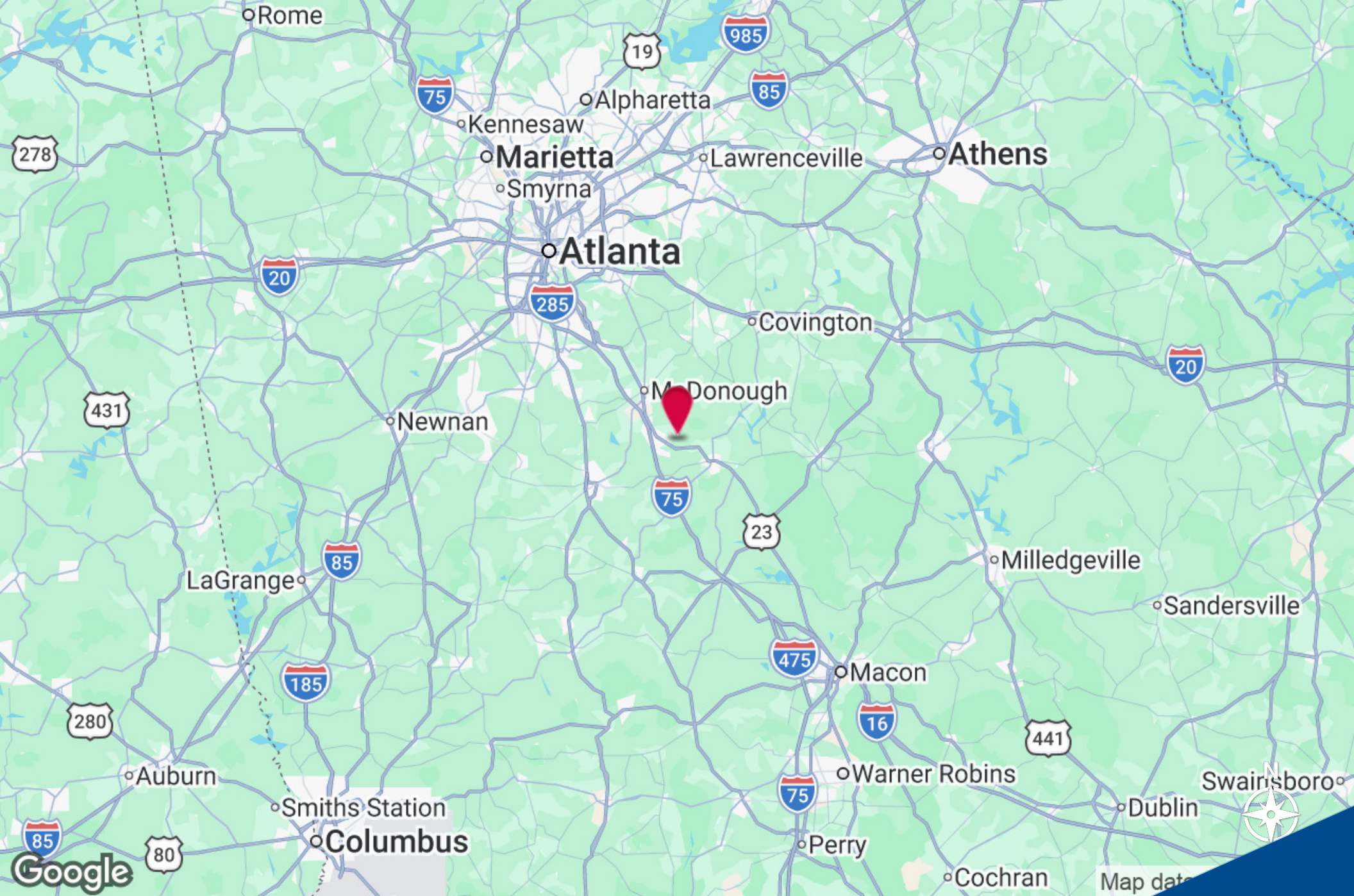


TOMMY BARROW
 Advisor
 210.394.9943
 tbarrow@kingindustrial.com

BRYAN MARSHBURN, SIOR, CCIM
 Senior Vice President
 404.942.2044
 bmarshburn@kingindustrial.com

King Industrial Realty, Inc. **CORFAC** INTERNATIONAL
 Industrial • Commercial • Investment
 404.942.2000 | kingindustrial.com

Every effort has been made to provide accurate information, but no liability is assumed for errors or omissions.



TOMMY BARROW

Advisor
210.394.9943
tbarrow@kingindustrial.com

BRYAN MARSHBURN, SIOR, CCIM

Senior Vice President
404.942.2044
bmarshburn@kingindustrial.com

King Industrial Realty, Inc. **CORFAC** INTERNATIONAL
Industrial • Commercial • Investment
404.942.2000 | kingindustrial.com

Every effort has been made to provide accurate information, but no liability is assumed for errors or omissions.

EXCLUSIVELY LISTED BY:

TOMMY BARROW

Advisor

tbarrow@kingindustrial.com
210.394.9943

BRYAN MARSHBURN, SIOR, CCIM

Senior Vice President

bmarshburn@kingindustrial.com
404.942.2044

KING Industrial
Realty, Inc.

Industrial • Commercial • Investment
404.942.2000 | kingindustrial.com