

# OFFICE SPACE FOR SALE OR LEASE

[PLAY](#)



3D  VIRTUAL TOURS

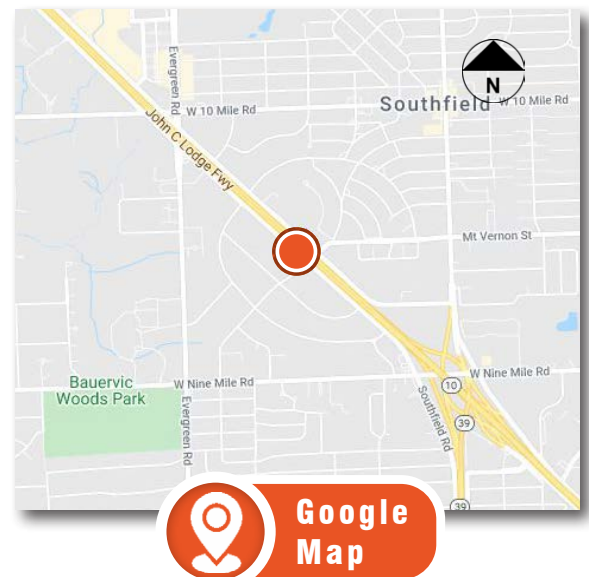
CONTACT FREE



**\$1,095,000**

**23875 Northwestern Hwy, Southfield, MI 48075**

- Two-Story, 12,600 SF Office Bldg
- **No Deferred Maintenance With New Roof, Windows, Parking Lot & HVAC Units**
- New Built-Out Suites With Upgraded Finishes
- Move-In Ready Office Suites Available:  
Suite 100: 5,830 RSF  
Suite 201: 2,410 RSF
- Rental Rate \$13.95 PSF + Electric
- Excellent Road Visibility, Located At A Corner
- Quick Access To I-696 & Connecting Freeways



**HAYMAN COMPANY**  
Real Estate Investment Services 

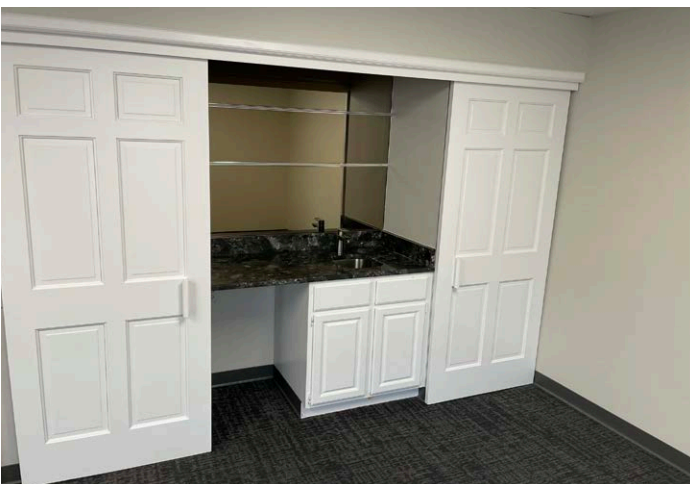
29100 Northwestern Hwy, Suite 410  
Southfield, MI 48034  
248.879.7777  
[www.haymancompany.com](http://www.haymancompany.com)

**Lawrence Randazzo**  
248.879.4739  
[lrandazzo@haymanco.com](mailto:lrandazzo@haymanco.com)



# PICTURES

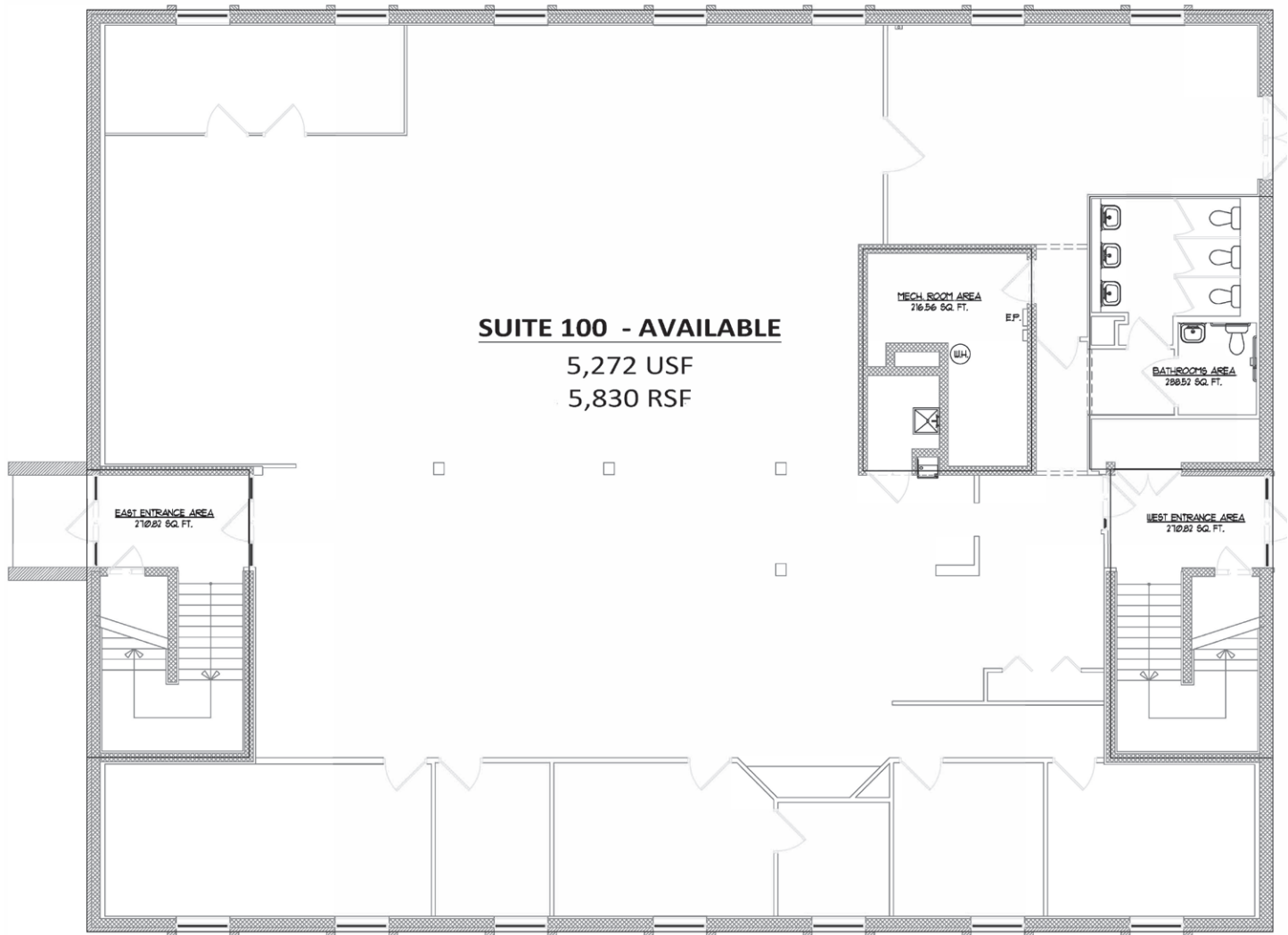
23875 Northwestern Hwy, Southfield, Michigan





# 1ST FLOOR

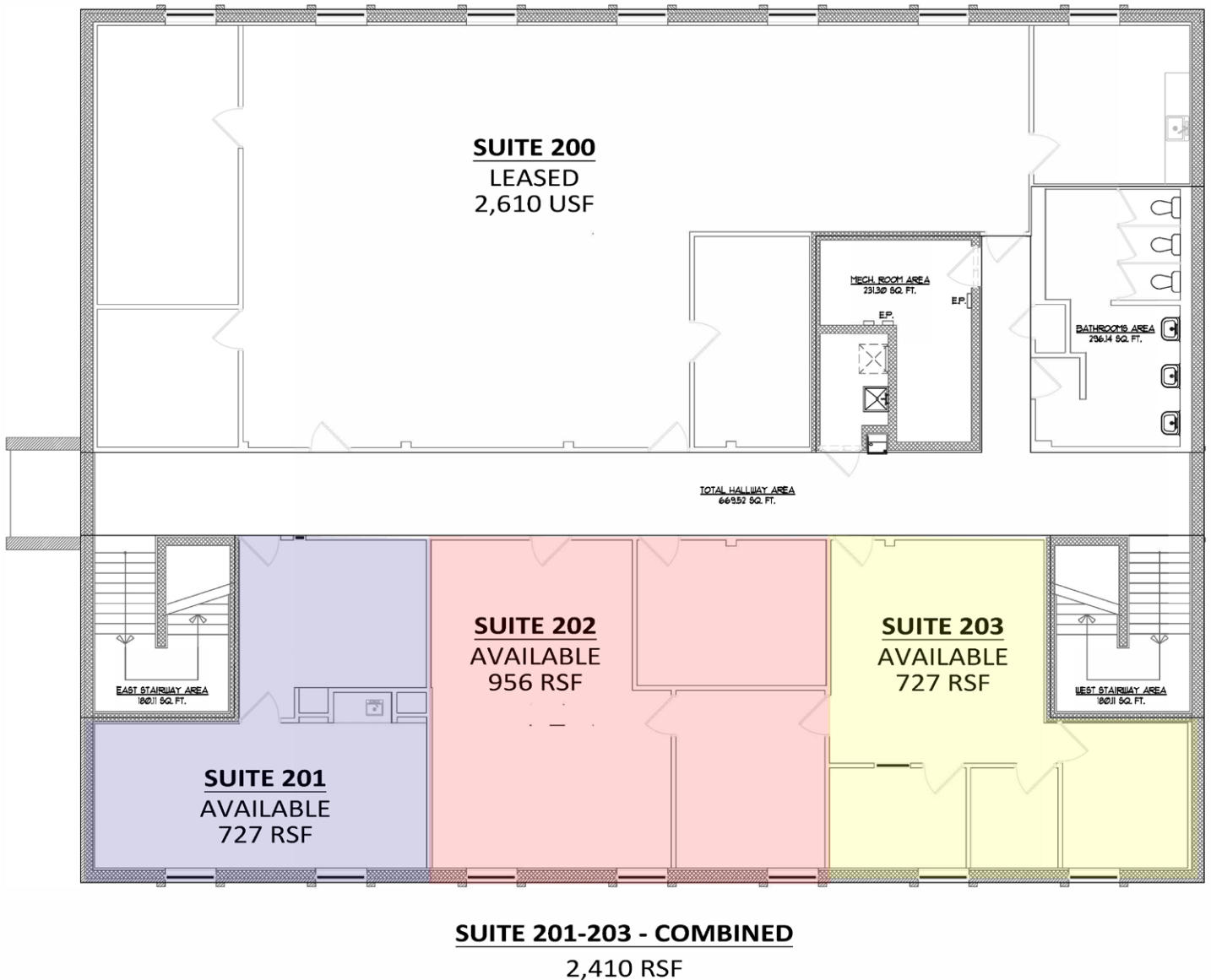
23875 Northwestern Hwy, Southfield, Michigan



FIRST FLOOR  
EXISTING / DEMO FLOOR PLAN  
1  
A100  
SCALE: 3/16" = 1'-0"

# 2ND FLOOR

23875 Northwestern Hwy, Southfield, Michigan



SECOND FLOOR  
EXISTING / DEMO FLOOR PLAN

1  
A101

SCALE: 3/16" = 1'-0"