

8158

BEVERLY BLVD

LOS ANGELES, CA

ARCHITECTURAL JEWEL BOX

WELLNESS CENTER, MEDICAL, RETAIL, OR OFFICE
FOR SALE OR LEASE



COMMERCIAL
ASSET GROUP

NEWMARK

DETAILS

| | |
|--------------|---------------------------|
| SIZE | ±3,080 SF |
| LEASE RATE | \$6.25 PSF/Mo + NNN |
| SALE PRICE | \$3,300,000 (\$1,039 PSF) |
| AVAILABILITY | Immediate |

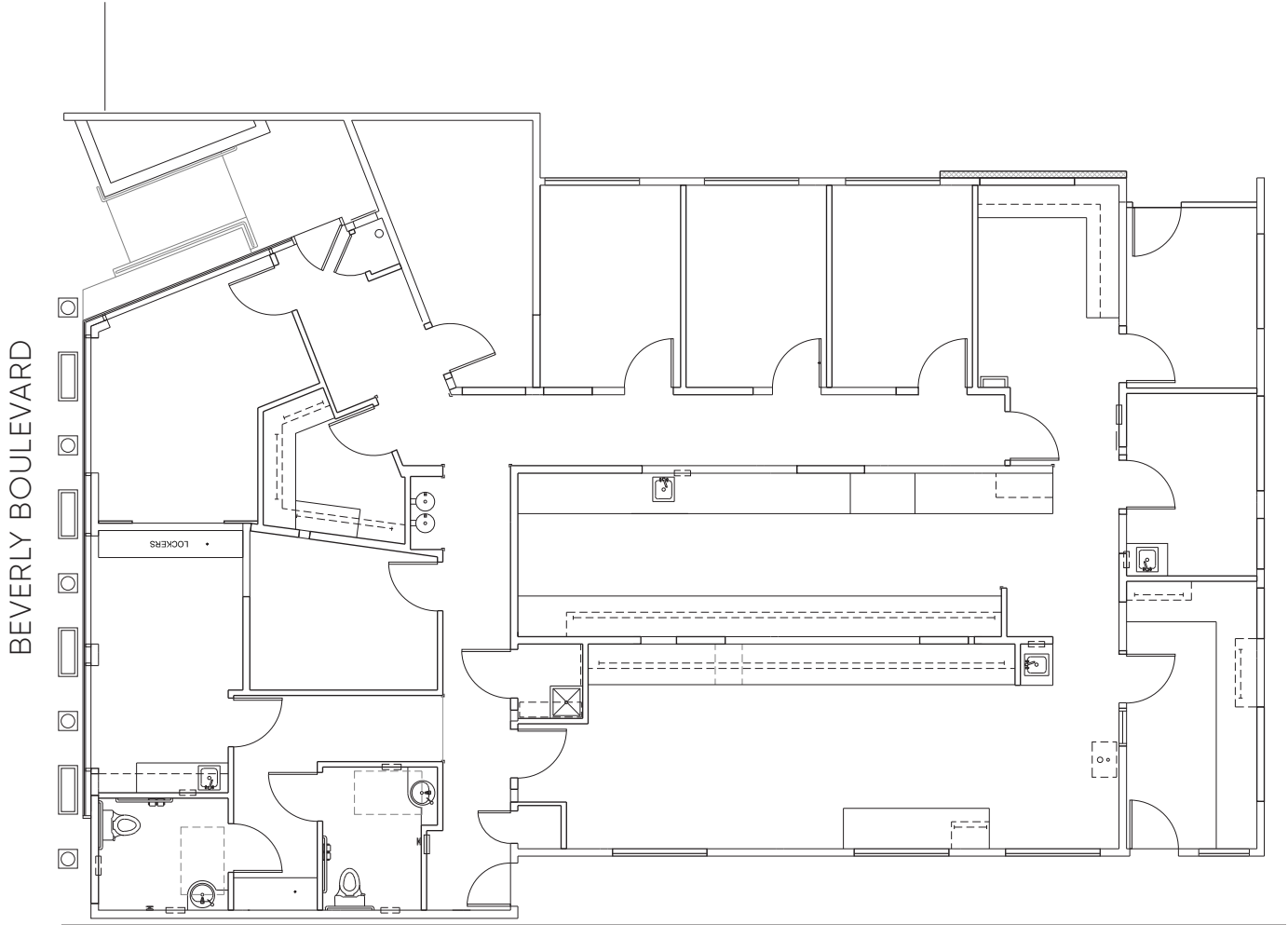
HIGHLIGHTS

- Ideal for retail, office, or medical/wellness center uses
- 7 parking spaces and up to 12 parking spaces with valet assist
- Medical/laboratory certificate of occupancy in place
- Prime location: Situated on Beverly Blvd, this property is located in premier amenity-rich area, surrounded by trendy shops, restaurants, cafes and entertainment options
- Creative and inspiring office space with unique design features, including clean lines, open spaces, and an abundance of natural light
- Upgraded electricity 600AMP / 3 Phase / 4 Wire / 240-120 Voltage



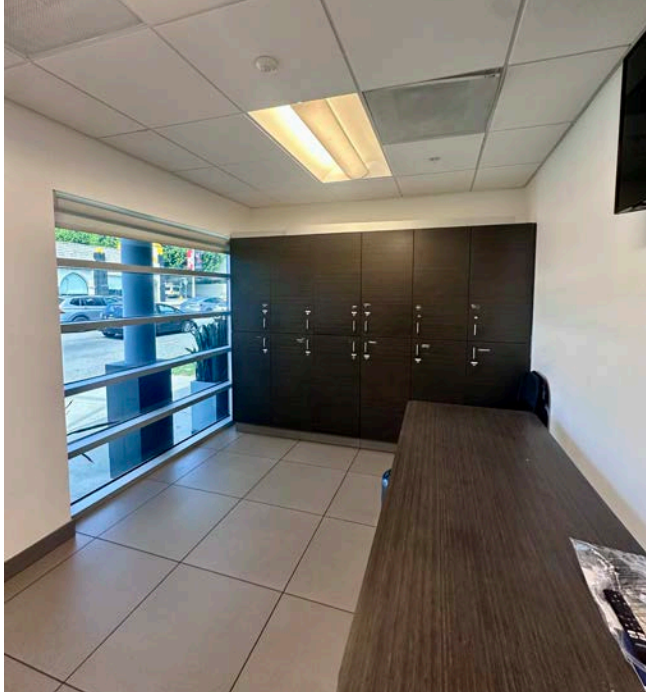
FLOOR PLAN | ±3,080 SF

- Nine (9) offices/exam rooms
- Two (2) file rooms
- Lobby
- Reception
- Break room
- Office supply room
- Lab/kitchen
- Two (2) restrooms



ADDITIONAL PHOTOS

[CLICK FOR ADDITIONAL PHOTOS](#)



ADDITIONAL PHOTOS

[CLICK FOR ADDITIONAL PHOTOS](#)



AMENITY MAP



BEVERLY CENTER

LA CIENEGA BLVD

W 3RD ST

CRESCENT HEIGHTS BLVD

8158
BEVERLY BLVD
LOS ANGELES, CA

8158

BEVERLY BLVD

LOS ANGELES, CA

These materials are based on information and content provided by others, which we believe are accurate. No guarantee, warranty or representation is made by Commercial Asset Group, Inc. or its personnel. All interested parties must independently verify accuracy and completeness. As well, any projections, assumptions, opinion, or estimates are used for example only and do not represent the current or future performance of the identified property. Your tax, financial, legal and toxic substance advisors should conduct a careful investigation of the property and its suitability for your needs, including land use limitations. The property is subject to prior lease, sale, change in price, or withdrawal from the market without notice.

FOR MORE, INFO, PLEASE CONTACT:

Daniel Chiprut
Commercial Asset Group
Co-Principal
310.275.8222
daniel@cag-re.com
Lic. 01808709

Steven Salas
Newmark
Senior Managing Director
310.508.0660
steven.salas@ngkf.com
Lic. 01232955

Kelly Valdez
Newmark
Brokerage Services Specialist
213.596.2239
kelly.valdez@nmrk.com
Lic. 01963632



COMMERCIAL
ASSET GROUP

NEWMARK