

4667 SOMERTON ROAD

TREVOSE, PA

±20,000 SF
AVAILABLE IMMEDIATELY

SUITE G

SUITE I

ABUNDANT EMPLOYEE PARKING, FULLY RENOVATED, CONVENIENT ACCESS TO ROUTE 1, PA TURNPIKE & I-95

Jimmy Franchetti

jfranchetti@lee-associates.com
610.335.1092

Matt Macdonald

matt.macdonald@lee-associates.com
610.238.8118

LEE & ASSOCIATES
COMMERCIAL REAL ESTATE SERVICES

ARDEN | LOGISTICS
PARKS

Lee & Associates of Eastern Pennsylvania LLC | 610 W. Germantown Pike, Suite 160, Plymouth Meeting, PA 19462 | 610.400.0499 | lee-associates.com/easternpa

All information furnished regarding property for sale, rental or financing is from sources deemed reliable, but no warranty or representation is made to the accuracy thereof and same is submitted subject to errors, omissions, change of price, rental or other conditions prior to sale, lease or financing or withdrawal without notice. No liability of any kind is to be imposed on the broker herein.

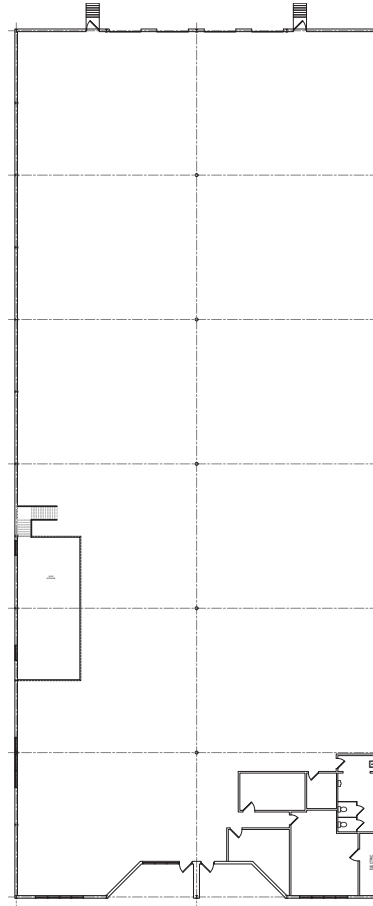
4667 SOMERTON ROAD

TREVOSE, PA

PROPERTY HIGHLIGHTS

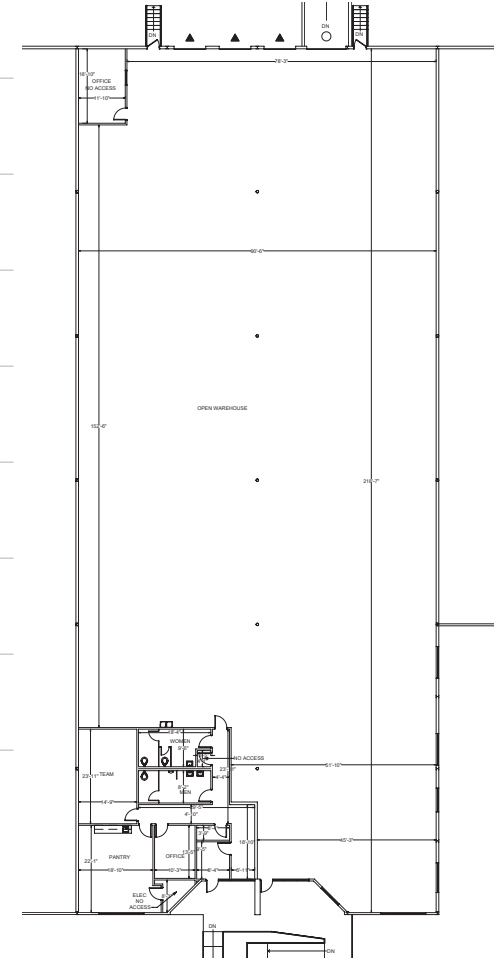
SUITE I

AVAILABLE SF	20,000
CLEAR HEIGHT	20'
COLUMN SPACING	46' x 38'
SPRINKLER	Wet
OFFICE SF	1,500
DOCKS	4



SUITE G

AVAILABLE SF	20,000
CLEAR HEIGHT	20'
COLUMN SPACING	46' x 38'
SPRINKLER	Wet
OFFICE SF	1,500
DOCKS	3
DRIVE-INS	1



Jimmy Franchetti

jfranchetti@lee-associates.com
610.335.1092

Matt Macdonald

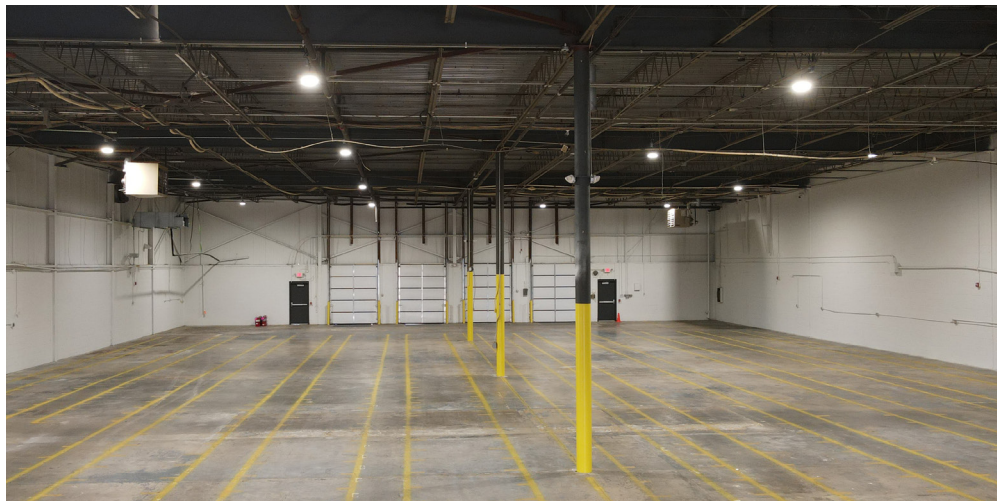
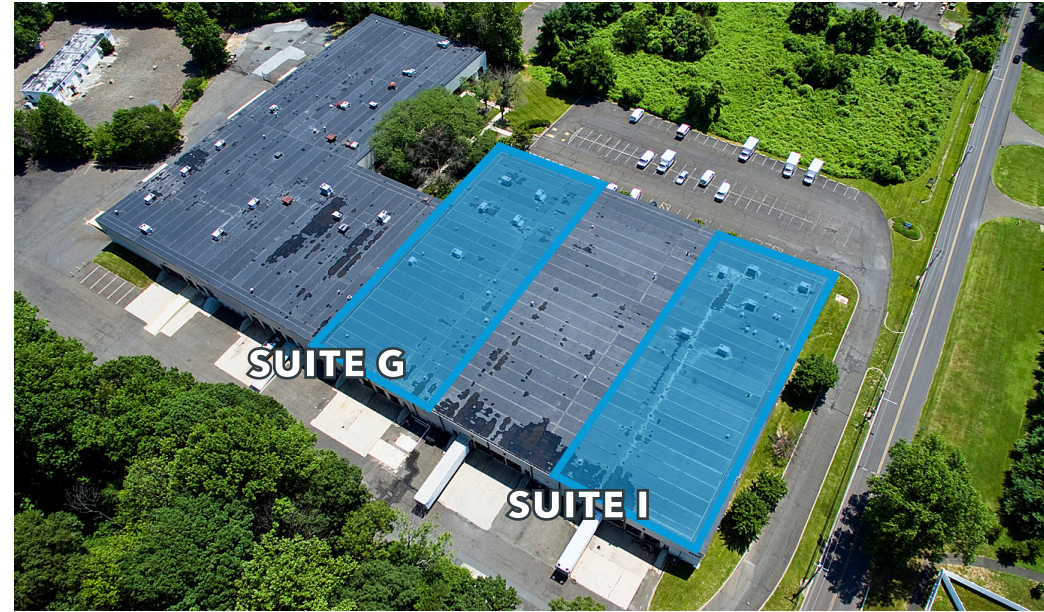
matt.macdonald@lee-associates.com
610.238.8118



4667 SOMERTON ROAD

TREVOSE, PA

PROPERTY PICTURES



Jimmy Franchetti

jfranchetti@lee-associates.com
610.335.1092

Matt Macdonald

matt.macdonald@lee-associates.com
610.238.8118



ARDEN | LOGISTICS
PARKS

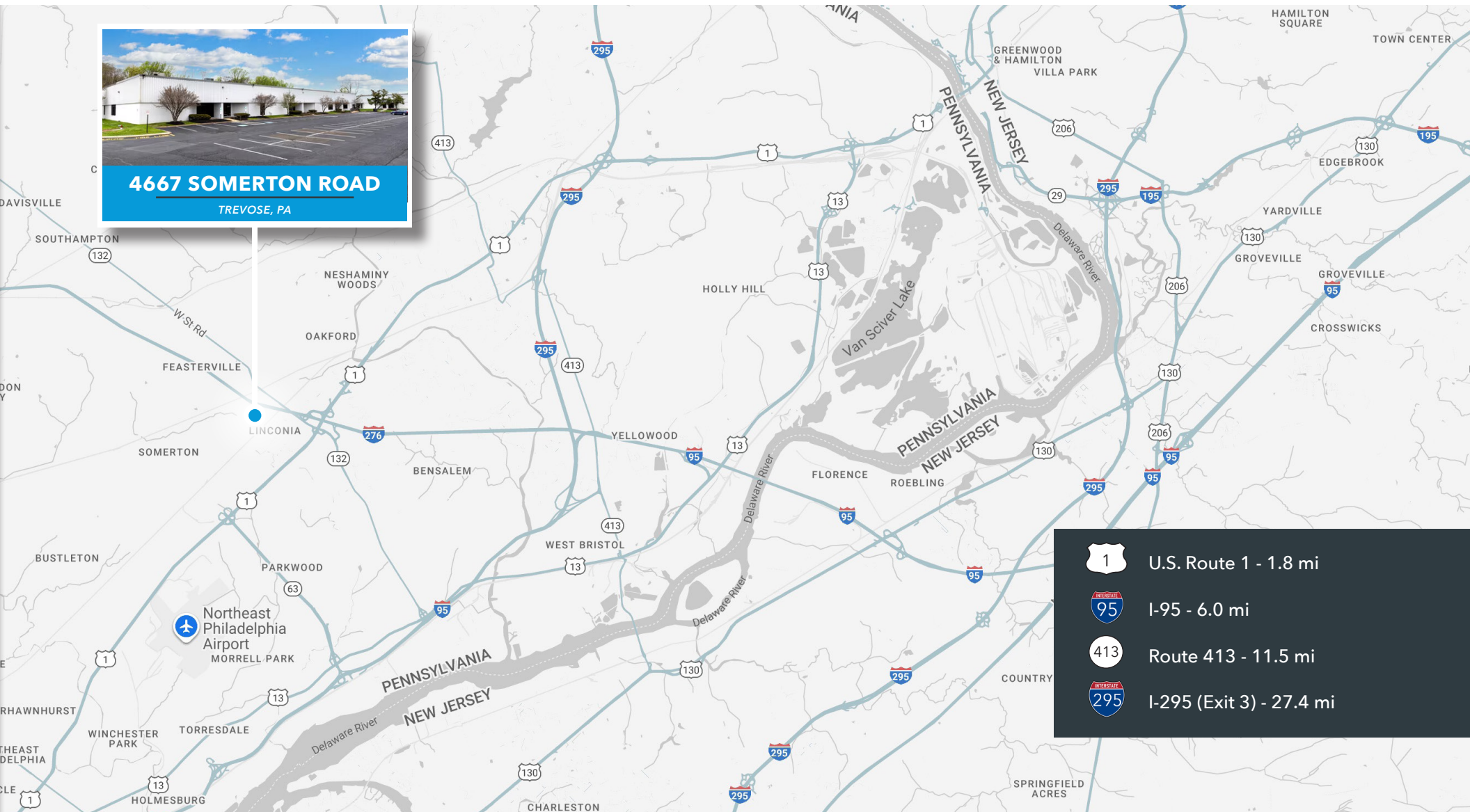
Lee & Associates of Eastern Pennsylvania LLC | 610 W. Germantown Pike, Suite 160, Plymouth Meeting, PA 19462 | 610.400.0499 | lee-associates.com/easternpa





All information furnished regarding property for sale, rental or financing is from sources deemed reliable, but no warranty or representation is made to the accuracy thereof and same is submitted subject to errors, omissions, change of price, rental or other conditions prior to sale, lease or financing or withdrawal without notice. No liability of any kind is to be imposed on the broker herein.

4667 SOMERTON ROAD

TREVOSE, PA

LOCATION OVERVIEW



-  U.S. Route 1 - 1.8 mi
-  I-95 - 6.0 mi
-  Route 413 - 11.5 mi
-  I-295 (Exit 3) - 27.4 mi

Jimmy Franchetti

jfranchetti@lee-associates.com
610.335.1092

Matt Macdonald

matt.macdonald@lee-associates.com
610.238.8118



ARDEN | LOGISTICS
PARKS