

**MAIN ROAD INDUSTRIAL FOR LEASE  
20,190 SF**



**PILOT  
PROPERTY GROUP**

**15065 32 MILE RD., BRUCE TOWNSHIP, MI 48065**

**PROPERTY OVERVIEW:**

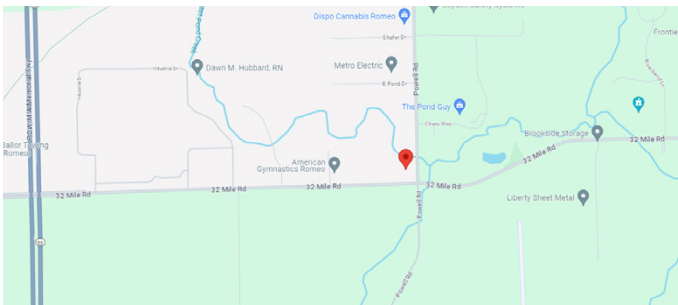
Beautiful building with even a better price! You won't find a better and nicer deal for 20,000 SF in the market.

Secure a long-term lease at below-market rates in a high-growth, strategically located area with excellent accessibility.

This Main Road industrial building has a two story front office/show-room area and rear shop/warehouse. Perfect multi-use building.

Lease Rate includes taxes and insurance. Tenant pays for snow removal/salting and utilities.

Motivated to make a deal! Contact broker for more details.



- Property Type:* . . . . . Free Standing Industrial
- Cross Streets:* . . . . . 32 Mile/Powell Rd - just East of M-53  
and downtown Romeo
- Total Square Footage:* . . . . . 20,190
- Shop Square Footage:* . . . . . 16,800
- Office Square Footage:* . . . . . 3,390 (2 Stories)
- Year Built:* . . . . . 2008
- Zoning:* . . . . . I-1
- Heavy Power:* . . . . . 2,000 AMP, 240 V, 3-Phase
- High Ceiling Height:* . . . . . 22'
- Lighting:* . . . . . T-5
- Bay Sizes:* . . . . . See Plan
- Rear Loading Docks:* . . . . . (2) 10'W x 10'H
- Grade Level Doors:* . . . . . (1) 16'W x 14'H
- Parking Spaces:* . . . . . 30 Spaces
- Property Sub-Types:* . . . . . Warehousing, Distribution, Mixed Use,  
Manufacturing, Commercial
- Lease Rate:* . . . . . \$7.50/SF
- Lease Type:* . . . . . Gross

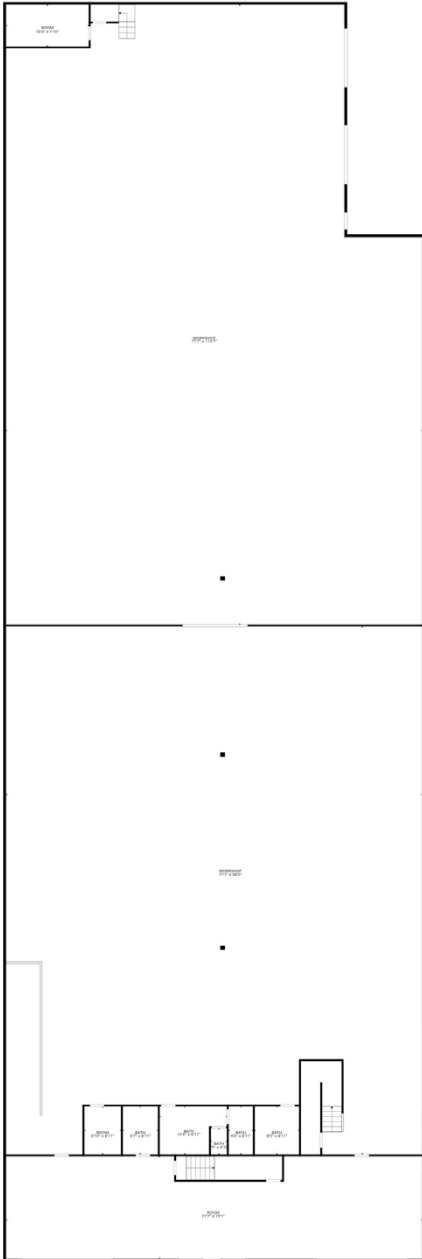
**AGENT CONTACT INFO**

**EVAN JUROVCIK** O: 586.254.0900 x108 • C: 586.360.0911 • ejurovcik@gmail.com

*Matching the right people to the right place.*

*Offices in Sterling Heights and Port Huron to serve you  
586.254.0900 • www.pilotpg.com*

## FLOOR PLAN



**FIRST FLOOR**



**SECOND FLOOR**

*Matching the right people to the right place.*

Offices in Sterling Heights and Port Huron to serve you  
586.254.0900 • [www.pilotpg.com](http://www.pilotpg.com)

**ADDITIONAL PHOTOS**



***Matching the right people to the right place.***

*Offices in Sterling Heights and Port Huron to serve you  
586.254.0900 • [www.pilotpg.com](http://www.pilotpg.com)*

*ADDITIONAL PHOTOS*



*Matching the right people to the right place.*

Offices in Sterling Heights and Port Huron to serve you  
586.254.0900 • [www.pilotpg.com](http://www.pilotpg.com)