

1105 STONE HARBOR BLVD,  
STONE HARBOR, NJ 08247

FRONTS MAIN  
ACCESS ROAD



EXCLUSIVELY  
REPRESENTED BY  
THE FLYNN COMPANY

## STANDALONE RETAIL BUILDING | 1,005 SF AVAILABLE FOR LEASE

### PROPERTY HIGHLIGHTS



Last retail building before Stone Harbor's 96th Street Bridge (Gull Island Thorofare Bridge) as you cross onto Seven Mile Island.



Significant signage opportunities and high visibility with +100 feet of frontage along Stone Harbor Blvd, one of only four access points onto Seven Mile Island.



Building situated on isolated property with +180-degree views of the surrounding Coastal Wetlands and Bay.



Property supports several off-street parking spots.



Building delivered with new roof, exterior, and a vanilla boxed interior.



Property fronts a pedestrian crosswalk.

BRANDO CASALICCHIO  
BCASALICCHIO@FLYNNCO.COM  
215-561-6565 X 153

DAVID RICCI  
DRICCI@FLYNNCO.COM  
215-561-6565 X 154

The  
Flynn  
Company

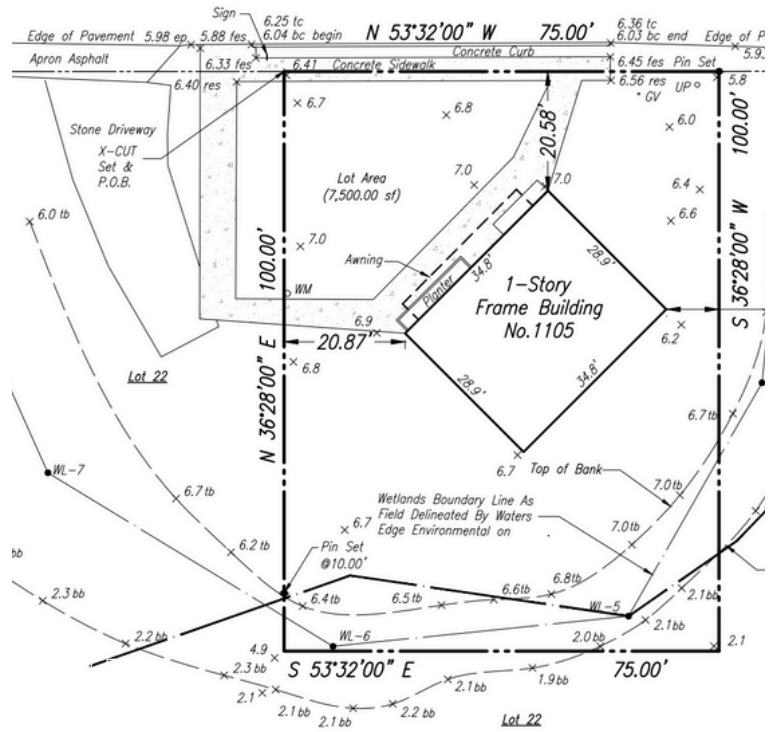
THE FLYNN COMPANY

WWW.FLYNNCO.COM | 1621 WOOD STREET, PHILADELPHIA, PA 19103 | 215.561.6565

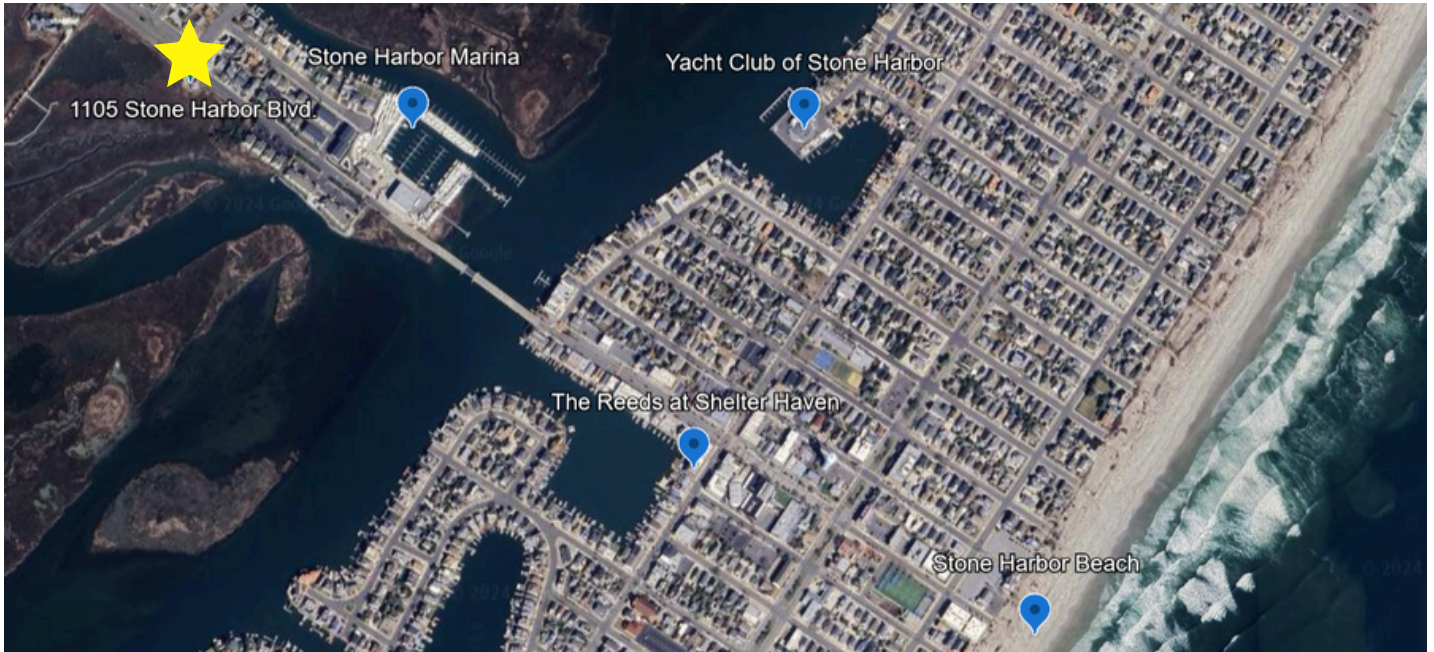
# 1105 STONE HARBOR BLVD

1,005 SF STANDALONE RETAIL BUILDING | AVAILABLE FOR LEASE

## PROPERTY PHOTOS



## MAP



**For More Information  
Please Contact:**

**BRANDO CASALICCHIO**  
BCASALICCHIO@FLYNNCO.COM  
215-561-6565 X 153

**DAVID RICCI**  
DRICCI@FLYNNCO.COM  
215-561-6565 X 154