

**INDUSTRIAL PROPERTY FOR LEASE**

**TTM, LLC**

200 Windermere Blvd, Alexandria, LA 71303

LOUISIANA LIFT  
*and equipment*  
INCORPORATED

Presented By:

**Jack Hodges, CCIM**

Commercial Sales & Leasing  
O: 318.483.1542 | C: 318.481.8757  
jhodges@latterblum.com



## PROPERTY DESCRIPTION

Boasting a total of 6,000 square feet, this exceptional property offers a well-appointed 2,500 square feet of office space alongside a spacious 3,500 square feet of warehouse area. Situated on a generous 1.325-acre lot, this versatile property provides ample room for various business needs and potential expansion. With a thoughtfully designed layout and ample outdoor space, this property presents an ideal opportunity for businesses seeking a blend of office and warehouse space in a convenient location.

## PROPERTY HIGHLIGHTS

- Total of 6,000 SF
- - 2,500 SF Office space
- - 3,500 SF Warehouse space
- - Situated on 1.325 acres
- - Prime location on Windermere Boulevard
- - Close proximity to Highway 28 West

## OFFERING SUMMARY

Lease Rate:	\$7.00 SF/yr (NN)
Monthly Rent:	\$3,500.00
Number of Units:	1
Available SF:	6,000 SF
Lot Size:	1.325 Acres
Building Size:	6,000 SF

DEMOGRAPHICS	0.3 MILES	0.5 MILES	1 MILE
Total Households	349	827	2,469
Total Population	673	1,805	5,848
Average HH Income	\$75,793	\$76,676	\$86,444

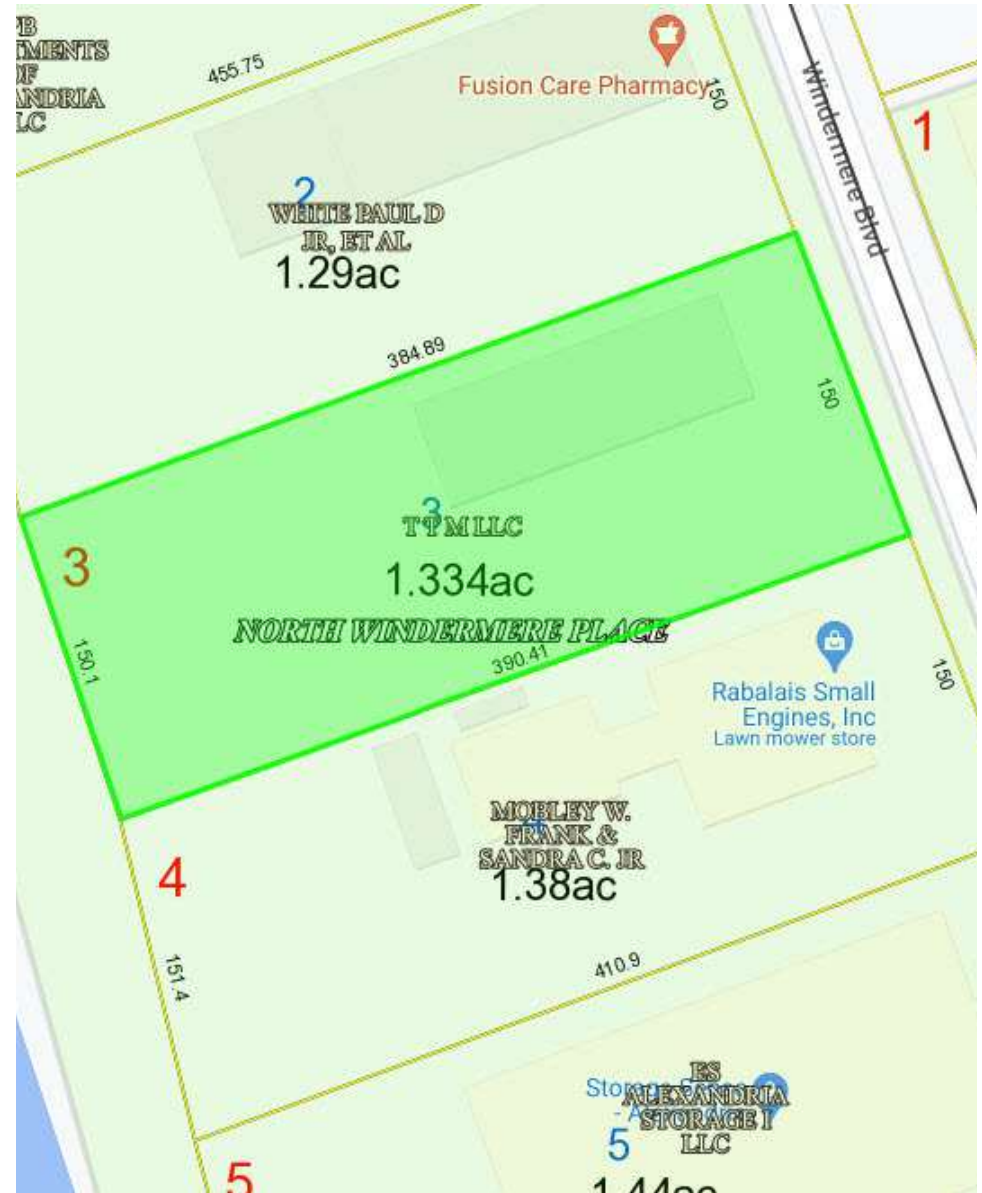
INFORMATION SUBJECT TO VERIFICATION & NO LIABILITY FOR ERRORS & OMISSION ASSUMED. // LICENSED IN LOUISIANA



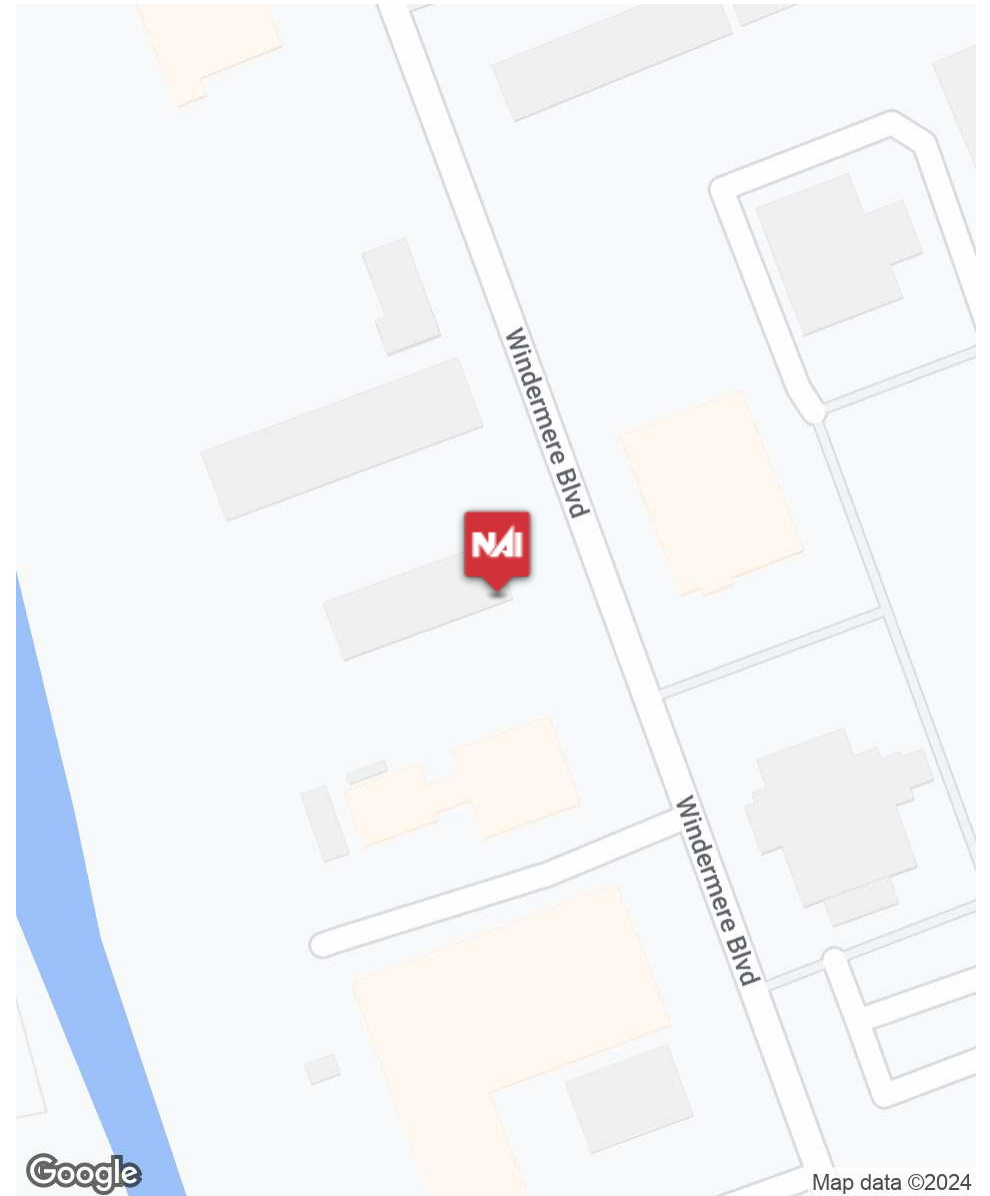
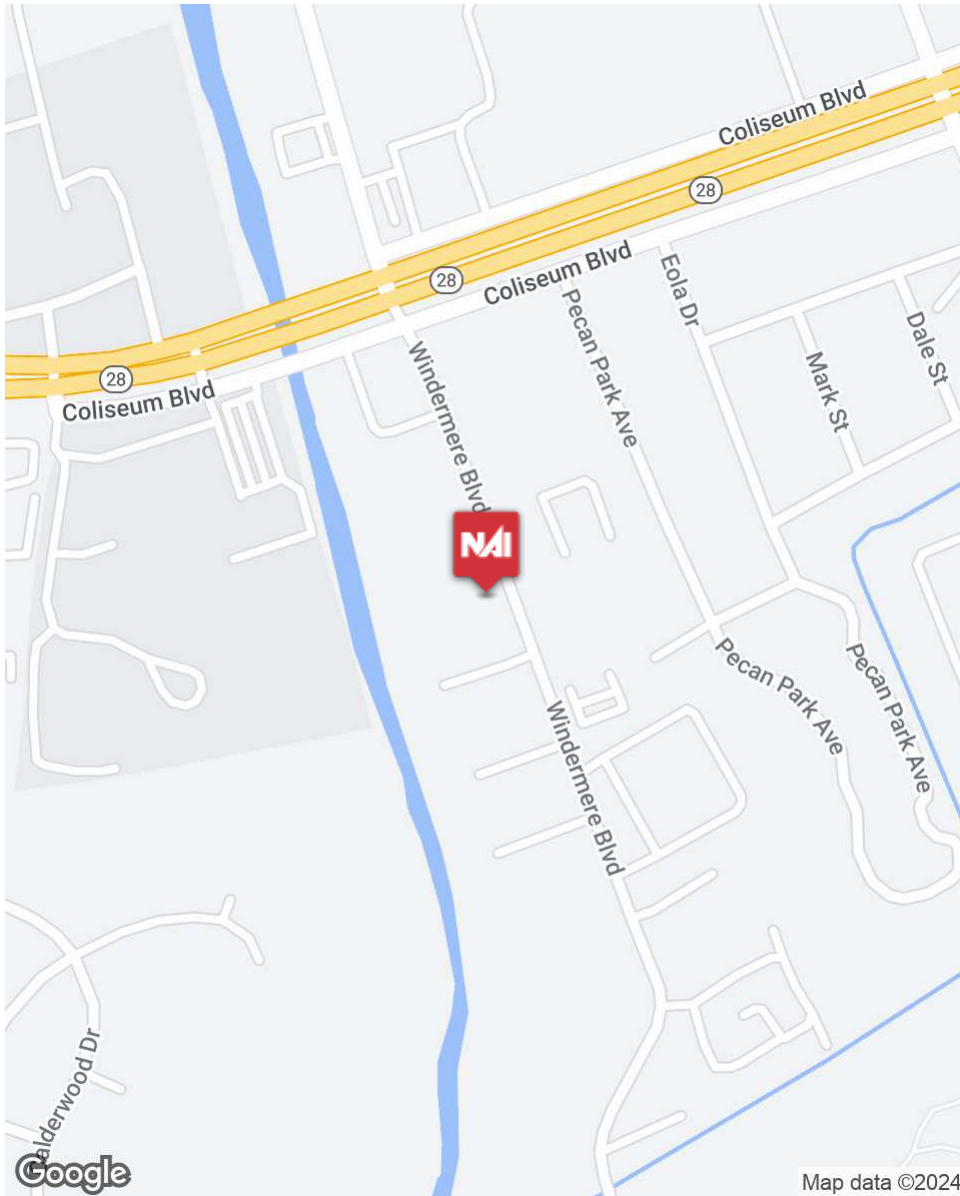
INFORMATION SUBJECT TO VERIFICATION & NO LIABILITY FOR ERRORS & OMISSION ASSUMED. // LICENSED IN LOUISIANA



INFORMATION SUBJECT TO VERIFICATION & NO LIABILITY FOR ERRORS & OMISSION ASSUMED. // LICENSED IN LOUISIANA



INFORMATION SUBJECT TO VERIFICATION & NO LIABILITY FOR ERRORS & OMISSION ASSUMED. // LICENSED IN LOUISIANA



INFORMATION SUBJECT TO VERIFICATION & NO LIABILITY FOR ERRORS & OMISSION ASSUMED. // LICENSED IN LOUISIANA



For More Information:

**Jack Hodges, CCIM**

Commercial Sales & Leasing

O: 318.483.1542 | C: 318.481.8757

[jhodges@latterblum.com](mailto:jhodges@latterblum.com)

**NALatter&Blum**

4615 Parliament Drive, Ste 100  
Alexandria, LA 71303

[www.latterblum.com](http://www.latterblum.com)