



## For Sale or Lease | TransACT Building

5105 200th St SW | Lynnwood, WA 98036



**Jeff Chaney**  
Executive Vice President  
425 260 8900  
[jeff.chaney@colliers.com](mailto:jeff.chaney@colliers.com)

**Seamus Ober**  
Senior Associate  
425 652 3890  
[seamus.ober@colliers.com](mailto:seamus.ober@colliers.com)

11225 SE 6th St., Suite 240  
Bellevue, WA 98004  
425 453 4545  
[colliers.com](http://colliers.com)





Building Size  
**6,153 RSF**



Rates  
**Contact Brokers**



Surface Parking  
**3.88/1,000 RSF**



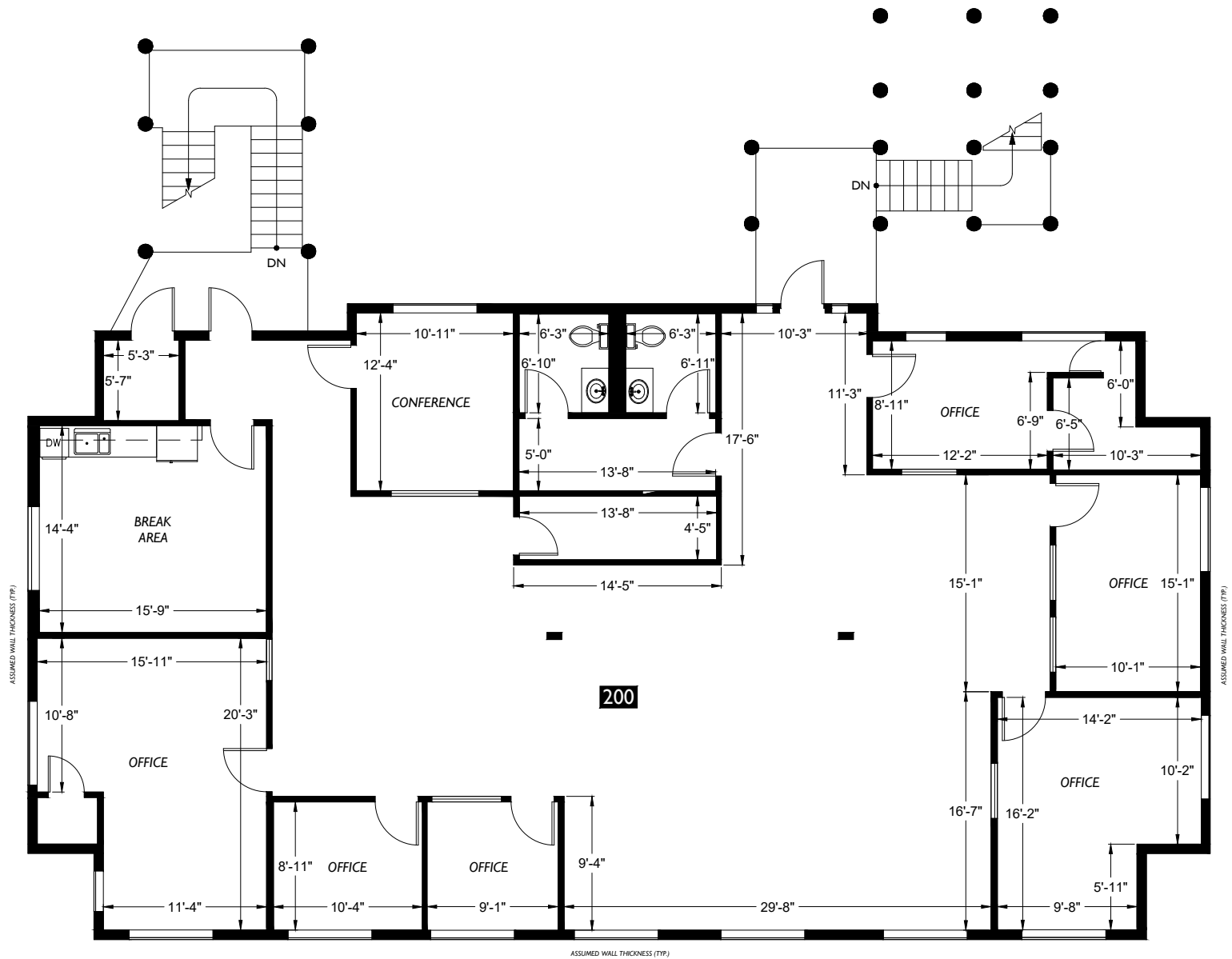
Year Built  
**1988**

Entire second floor available for an owner-user - 3,469 RSF

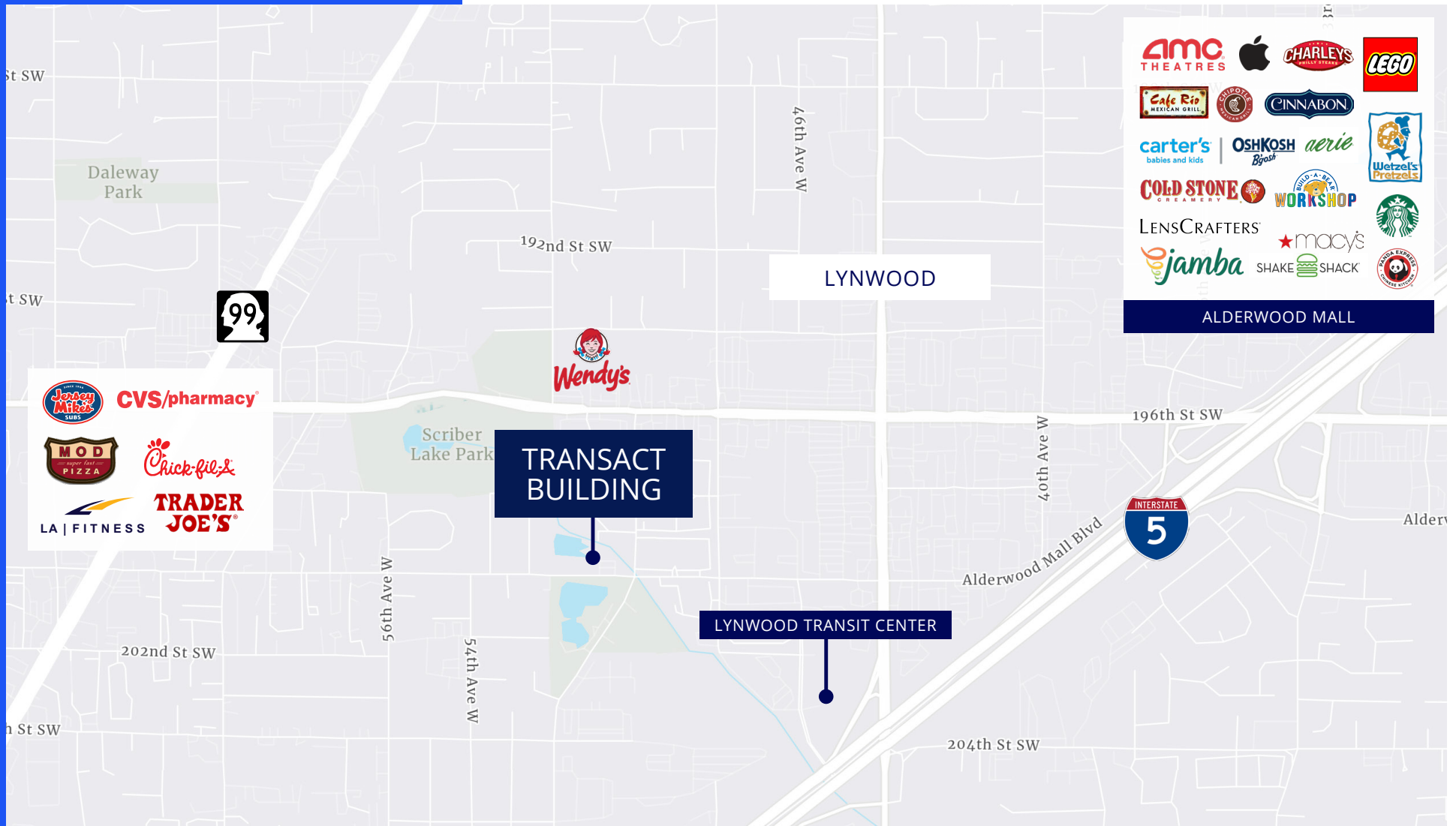
Located in an Opportunity Zone

National credit tenants

Waterfront property overlooking private lake



## Floor Plans Second Floor



## Amenities

### Conveniently located near:

- Hwy 99, I-5 and I-405
- Lynwood Transit Center
- Alderwood Mall with lots of retail amenities and restaurants





## For Sale or Lease | TransACT Building

5105 200th St SW | Lynnwood, WA 98036

### Jeff Chaney

Executive Vice President

425 260 8900

[jeff.chaney@colliers.com](mailto:jeff.chaney@colliers.com)

### Seamus Ober

Senior Associate

425 652 3890

[seamus.ober@colliers.com](mailto:seamus.ober@colliers.com)

11225 SE 6th St., Suite 240

Bellevue, WA 98004

425 453 4545

[colliers.com](http://colliers.com)



This document has been prepared by Colliers for advertising and general information only. Colliers makes no guarantees, representations or warranties of any kind, expressed or implied, regarding the information including, but not limited to, warranties of content, accuracy and reliability. Any interested party should undertake their own inquiries as to the accuracy of the information. Colliers excludes unequivocally all inferred or implied terms, conditions and warranties arising out of this document and excludes all liability for loss and damages arising there from. This publication is the copyrighted property of Colliers and/or its licensor(s). ©2025. All rights reserved. Colliers Portland.