

3511-3517 S. FORT STREET  
UNIT #3517  
DETROIT, MICHIGAN



**SIGNATURE  
ASSOCIATES**  
KNOW SIGNATURE | KNOW RESULTS

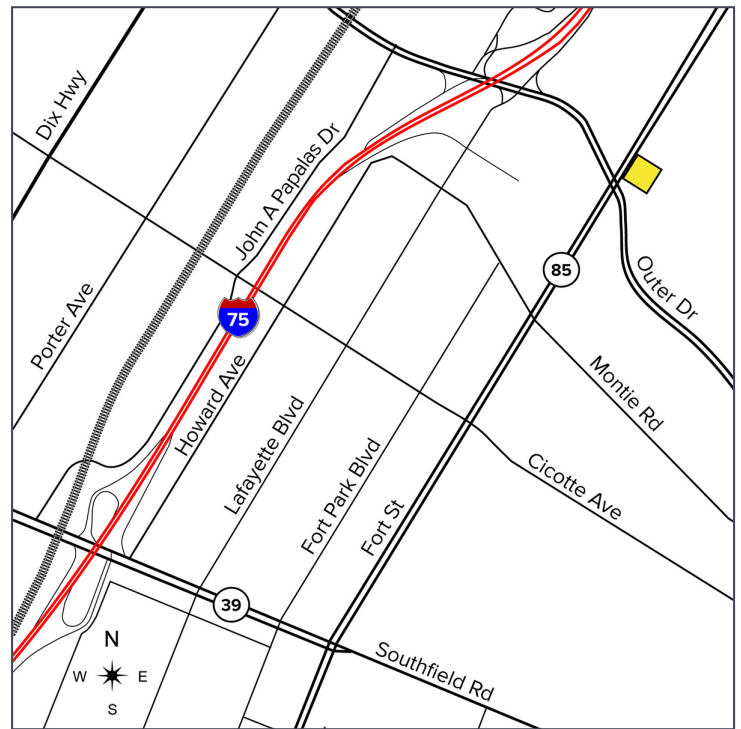
RETAIL FOR LEASE  
2,000 Square Feet Available



## PROPERTY FEATURES

- 2,000 available square feet
- Zoned B-4
- Built in 1961
- Ample parking
- Lease Rate: \$2,900/month Gross

**Comments:** Great retail opportunity on busy intersection.



For more information, please contact:

**JOE STACK**  
(248) 359 0615  
jstack@signatureassociates.com

**CHRIS MONSOUR**  
(248) 948 0107  
cmonsour@signatureassociates.com

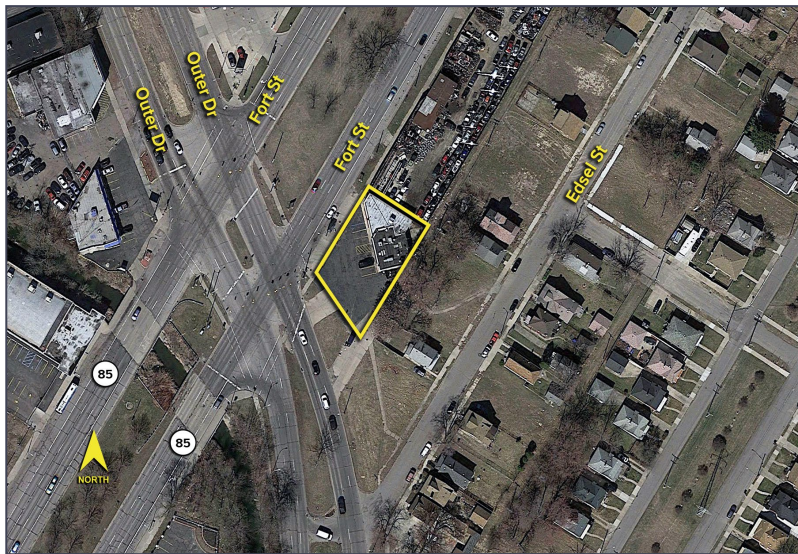
**SIGNATURE ASSOCIATES**  
One Towne Square, Suite 1200  
Southfield, MI 48076  
www.signatureassociates.com



# 3511-3517 S. Fort Street Unit #3517 – Detroit, MI

Retail For Lease

2,000  
Square Feet  
AVAILABLE

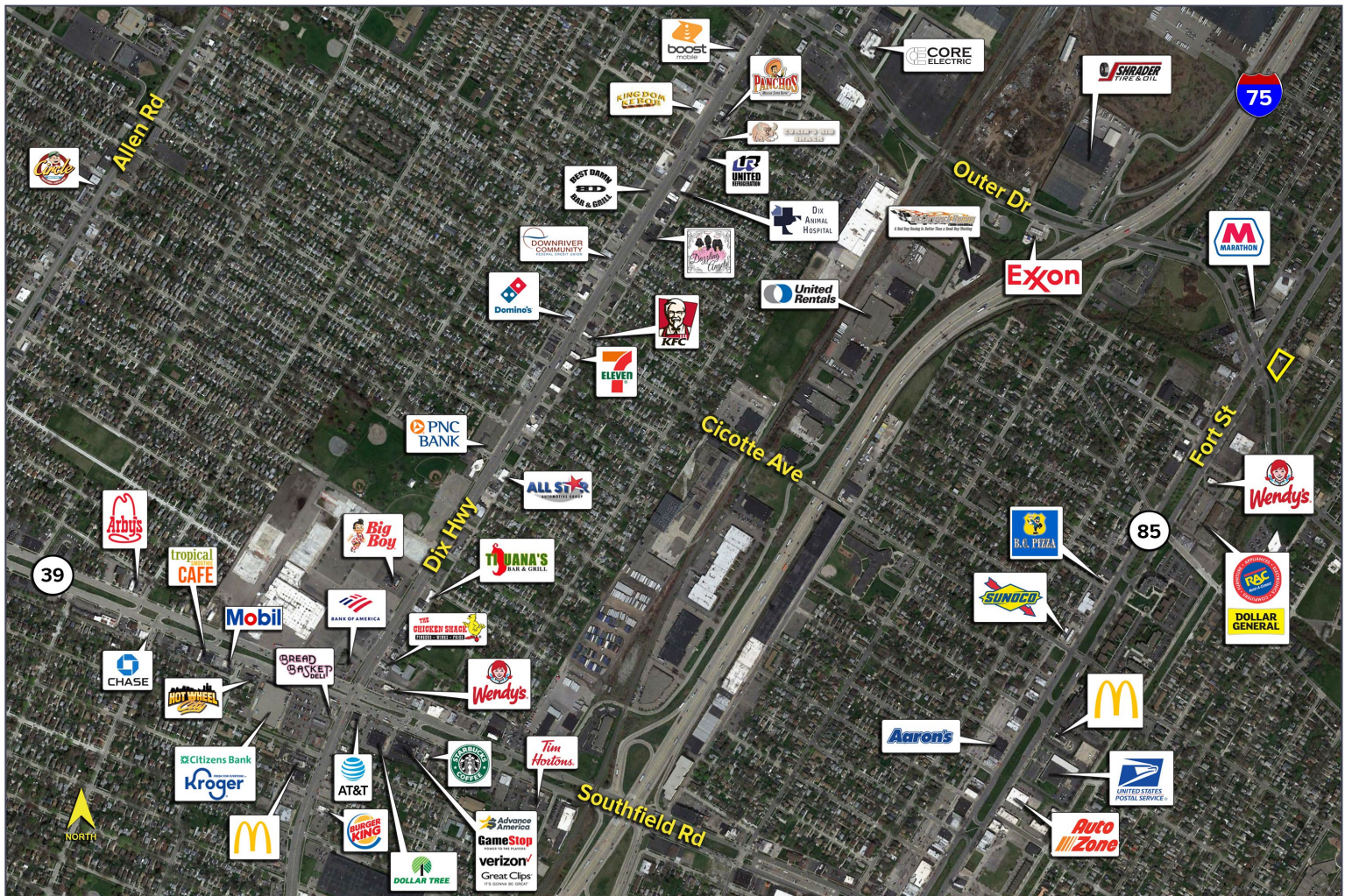


## DEMOGRAPHICS

	POPULATION	MED. HH INCOME
1 MILE	16,932	\$52,826
3 MILE	102,789	\$62,925
5 MILE	249,612	\$62,400

## TRAFFIC COUNTS (TWO-WAY)

15,127	Fort St. N. of Outer Dr. 2-Way
24,610	Fort St. S. of Outer Dr. 2-Way
15,891	Outer Dr. SE of Fort St. 2-Way
22,308	Outer Dr. NW of Fort St. 2-Way



For more information, please contact:

**JOE STACK**  
(248) 359 0615  
jstack@signatureassociates.com

**CHRIS MONSOUR**  
(248) 948 0107  
cmonsour@signatureassociates.com

**SIGNATURE ASSOCIATES**  
One Towne Square, Suite 1200  
Southfield, MI 48076  
www.signatureassociates.com

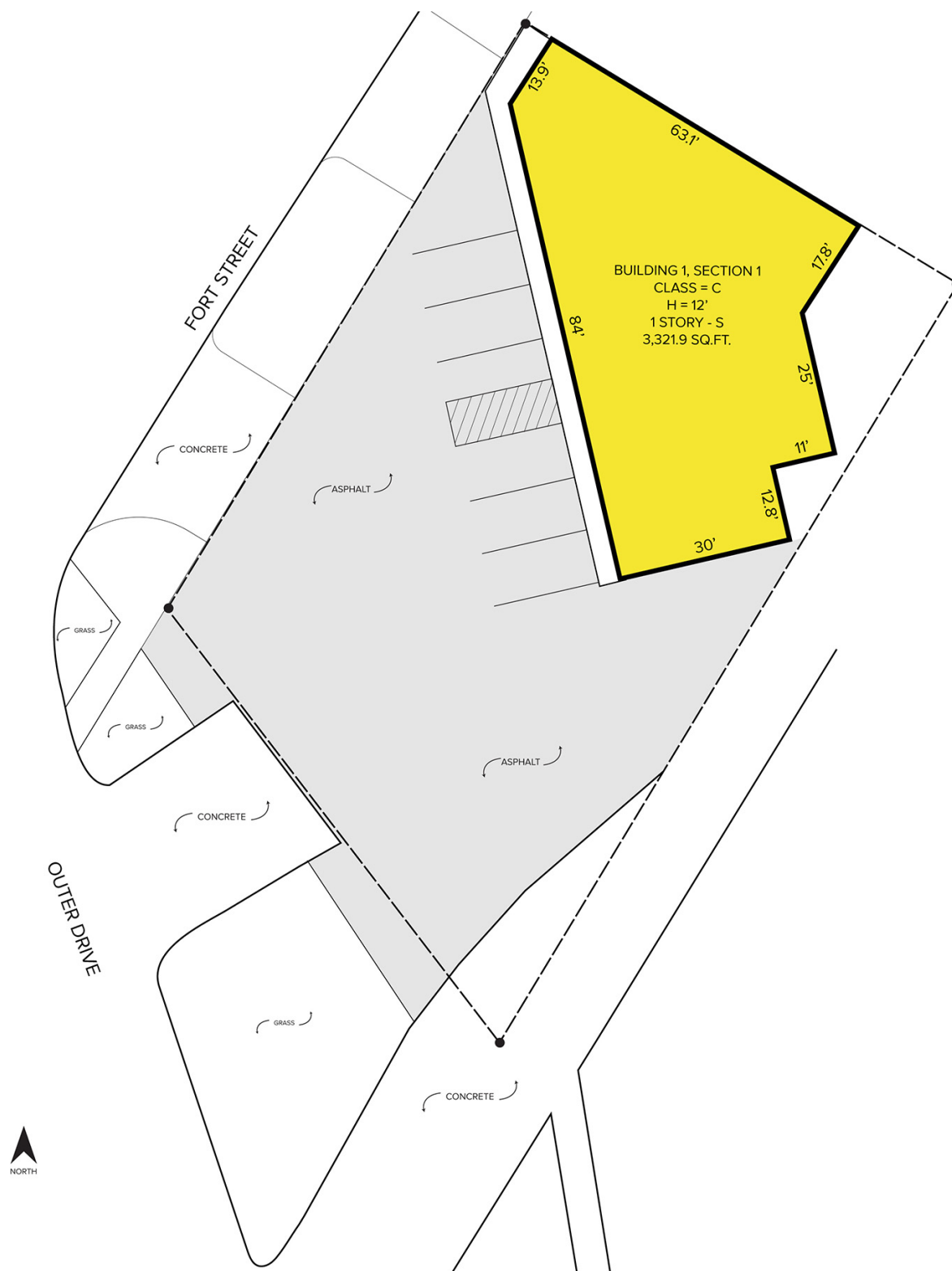


# 3511-3517 S. Fort Street Unit #3517 – Detroit, MI

## Retail For Lease

2,000  
Square Feet  
AVAILABLE

### Site Plan



For more information, please contact:

**JOE STACK**  
(248) 359 0615  
jstack@signatureassociates.com

**CHRIS MONSOUR**  
(248) 948 0107  
cmonsour@signatureassociates.com

**SIGNATURE ASSOCIATES**  
One Towne Square, Suite 1200  
Southfield, MI 48076  
www.signatureassociates.com

Information is subject to verification and no liability for errors or omissions is assumed. Price is subject to change and listing withdrawal.