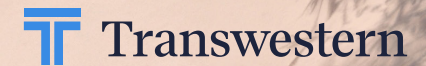


8952 E Desert Cove

Scottsdale, AZ 85260



Kathleen Morgan

Managing Director

1 602 809 1048

kathleen.morgan@transwestern.com

Kevin Smigiel

Vice President

1 602 550 9295

kevin.smigiel@transwestern.com

Vince Femiano

Managing Director

1 602 791 3310

vince.femiano@transwestern.com

Andrew Olivet

Associate

1 602 370 2685

andrew.olivet@transwestern.com



Scottsdale Shea Medical Plaza
8952 E Desert Cove, Scottsdale AZ 85260

Availability:

Suite E205: ±3,587 RSF (Dental Suite)*

Suite E209: ±919 RSF*

*Suites E205 & E209 are contiguous to 4,506 RSF

Lease Rate: \$32.00 PSF
(MG, Net of Elec. & Janitorial)

Kathleen Morgan
Managing Director
1 602 809 1048
kathleen.morgan@transwestern.com

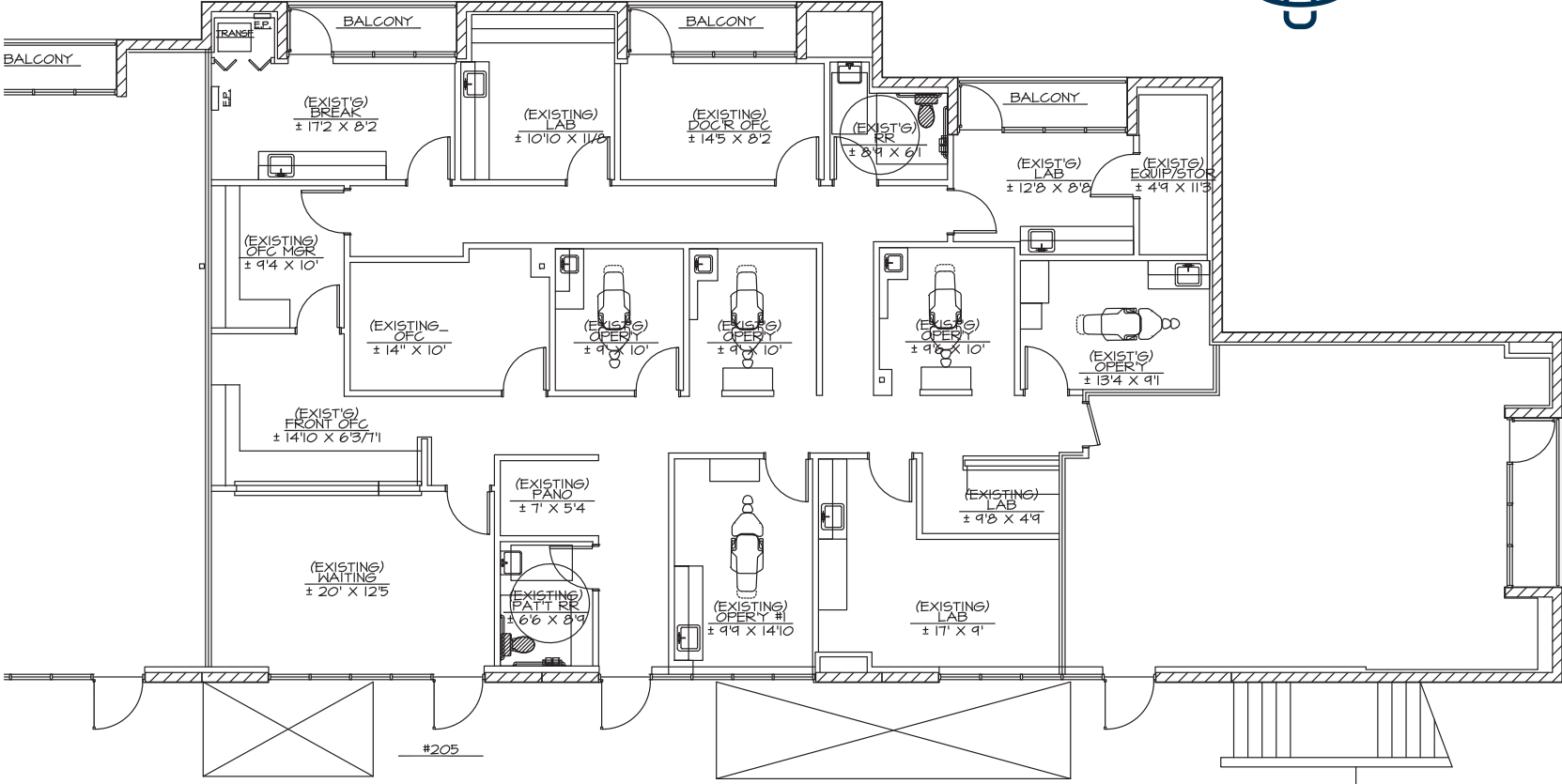
Kevin Smigiel
Vice President
1 602 550 9295
kevin.smigiel@transwestern.com

Vince Femiano
Managing Director
1 602 791 3310
vince.femiano@transwestern.com

Andrew Olivet
Associate
1 602 370 2685
andrew.olivet@transwestern.com



Suite E205 - ±3,587 RSF - Dental Suite



Kathleen Morgan
 Managing Director
 1 602 809 1048
 kathleen.morgan@transwestern.com

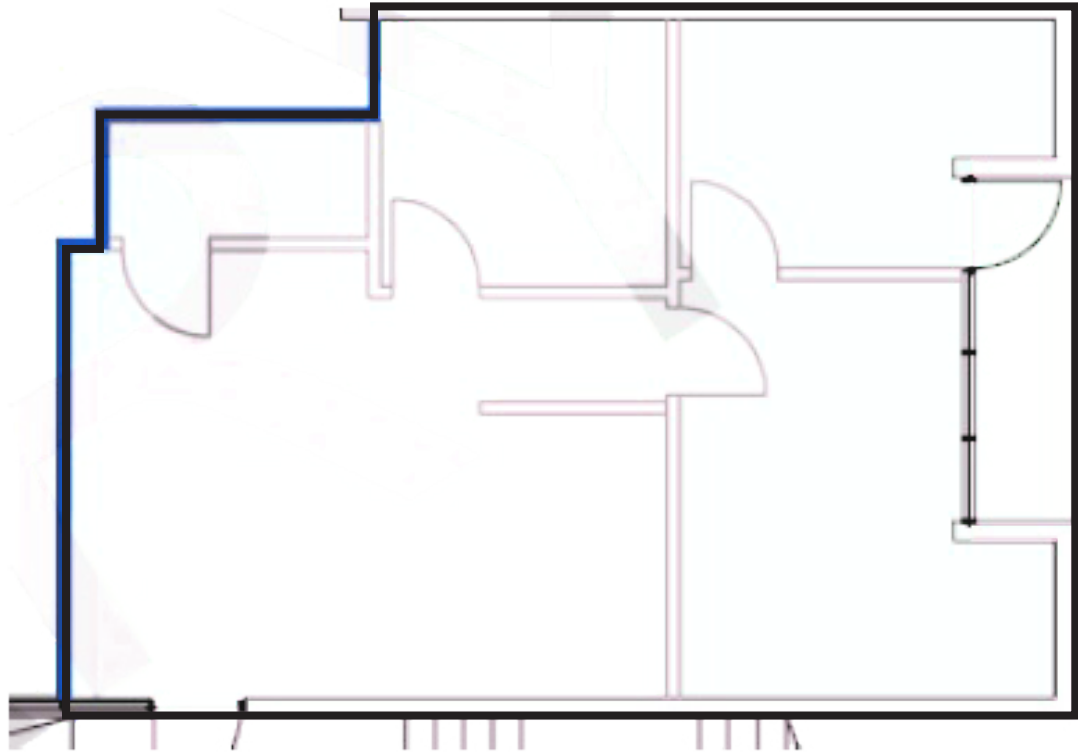
Kevin Smigiel
 Vice President
 1 602 550 9295
 kevin.smigiel@transwestern.com

Vince Femiano
 Managing Director
 1 602 791 3310
 vince.femiano@transwestern.com

Andrew Olivet
 Associate
 1 602 370 2685
 andrew.olivet@transwestern.com



Suite E209 - ±919 RSF



Kathleen Morgan
Managing Director
1 602 809 1048
kathleen.morgan@transwestern.com

Kevin Smigiel
Vice President
1 602 550 9295
kevin.smigiel@transwestern.com

Vince Femiano
Managing Director
1 602 791 3310
vince.femiano@transwestern.com

Andrew Olivet
Associate
1 602 370 2685
andrew.olivet@transwestern.com





Scottsdale Shea Medical Plaza
 8952 E Desert Cove
 Scottsdale, AZ 85260

HONORHEALTH
 Scottsdale Shea Medical Center

Scottsdale Fiesta Shopping Center

BARNES & NOBLE BOOKSELLERS BIG LOTS! buybuy BABY DUNKIN' DONUTS DSW
 Fry's HomeGoods THE HOME DEPOT IHOP
 MARSHALLS OfficeMax
 PET SMART Portillo's POPPYS WINGSTERS

E Desert Cove Ave

E Shea Blvd - 61,400 VPD

N 99th Pl

Pima Freeway - 17,878 VPD

101

- Just off Loop 101, north of Shea Blvd.
- ¼ mile from HonorHealth Scottsdale Shea Hospital
- Excellent mix of medical, dental and office tenants
- In proximity to numerous restaurant and retail amenities
- New Ownership
- Strong traffic counts along Shea Blvd. & Pima Freeway

Kathleen Morgan
 Managing Director
 1 602 809 1048
 kathleen.morgan@transwestern.com

Kevin Smigiel
 Vice President
 1 602 550 9295
 kevin.smigiel@transwestern.com

Vince Femiano
 Managing Director
 1 602 791 3310
 vince.femiano@transwestern.com

Andrew Olivet
 Associate
 1 602 370 2685
 andrew.olivet@transwestern.com



The information provided herein was obtained from sources believed reliable; however, Transwestern makes no guarantees, warranties or representations as to the completeness or accuracy thereof. The presentation of this property is submitted subject to errors, omissions, change of price or conditions, prior sale or lease, or withdrawal without notice. Copyright © 2026 Transwestern.