

# Boyd

**REAL ESTATE**

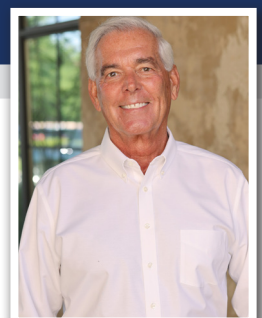
## Timber Ridge Professional Center



- 1,469 SF to 7,092 SF per building available
- Timber Ridge Advent ER, Walmart, Lowe's
- 5 retirement communities nearby including On Top of the World
- 43,000 ADT on Hwy 200
- 40,000 residents within a 5 mile radius
- \$18/SF NNN
- Bldgs 200 and 600 are completely available at 7,092 SF ea.
- All other buildings have smaller spaces available
- Medical and professional businesses welcome



**Erin Freel**  
*Broker Associate, CCIM*  
erin@erinfreel.com  
813-478-1735



**Joe Krim**  
*Broker*  
jkrim@boydrealestategroup.com  
352-895-9040

## AVAILABLE SPACE

BLDG	UNIT	SQ. FT.
100	102	2,039
200	ALL	7,092
300	302	2,015
300	303(4)	3,325
600	ALL	7,092
700	703	2,410
1000	1002	1,469
2000	2001	1,849
2000	2002	1,678
3000	3002	1,773
3000	3003	1,765
3000	3004	1,765
5000	5002	1,611
6000	6003	1,800

## CURRENT TENANTS

Vincent Delle-Donne, DMD and Athanasius Kokkas, DDS  
 Endoscopy Center of Ocala, Inc  
 James E. Lemire, MD PA  
 Robert Boissoneault Oncology Institute  
 Citrus Endodontics PA  
 Mid-Florida Prosthetics and Orthotics  
 Vantage Health, LLC  
 LabCorp  
 Mitta Primary Care, LLC  
 AOR Management Company of Virginia LLC  
 Suncoast Dermatology and Skin Surgery Center PA  
 Sun Coast Property Management  
 Advanced Wound Ostomy and Continence Care LLC  
 Associates for Urology Care  
 Florida Hospital Advent  
 Atlas Health Chiropractor



Kitchen



Small Room



Reception/  
Lobby

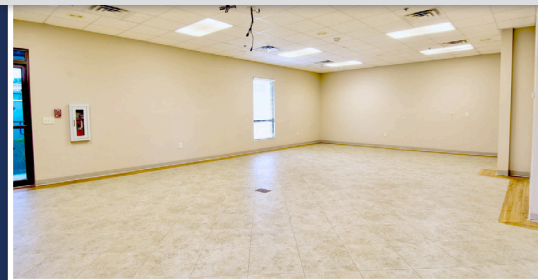
**CONFERENCE CENTER • 5,481 Sq. Ft. • Unit 5001 • Bldg 5000**

Available to rent out daily, weekly and weekends

Contact Bradley Young • [brad@boydrealestategroup.com](mailto:brad@boydrealestategroup.com) • 352-322-5353



Large Room



**Erin Freel**

*Broker Associate, CCIM*

[erin@erinfreel.com](mailto:erin@erinfreel.com)

**813-478-1735**

**Joe Krim**

*Broker*

[jkrim@boydrealestategroup.com](mailto:jkrim@boydrealestategroup.com)

**352-895-9040**

