



# ±750 SF Office Suites For Lease

2066 CLARMAR WAY, SUITE B & C  
SAN JOSE, CA

## Project Highlights

- Business name available on building sign facing street
- 3/1000 Parking
- Excellent Freeway Access
- Close Proximity to Valley Fair, Santana Row, O'Connor Hospital
- Tenant Pays PG&E, Water & Janitorial
- Elevator Served
- Floor plan on reverse
- ASVB Lockbox On Site

## Space Highlights

### Suite B:

- Ground floor suite
- No Load
- 3 private offices, open area and restroom in suite

## Space Highlights

### Suite C:

- No Load
- Suite Improved & Ready for Immediate
- 3 private offices, open area and restroom in suite

*For information, please contact:*

### **Geri Wong**

Senior Managing Director

t 408-987-4134

geri.wong@nmrk.com

CA RE License #01142432

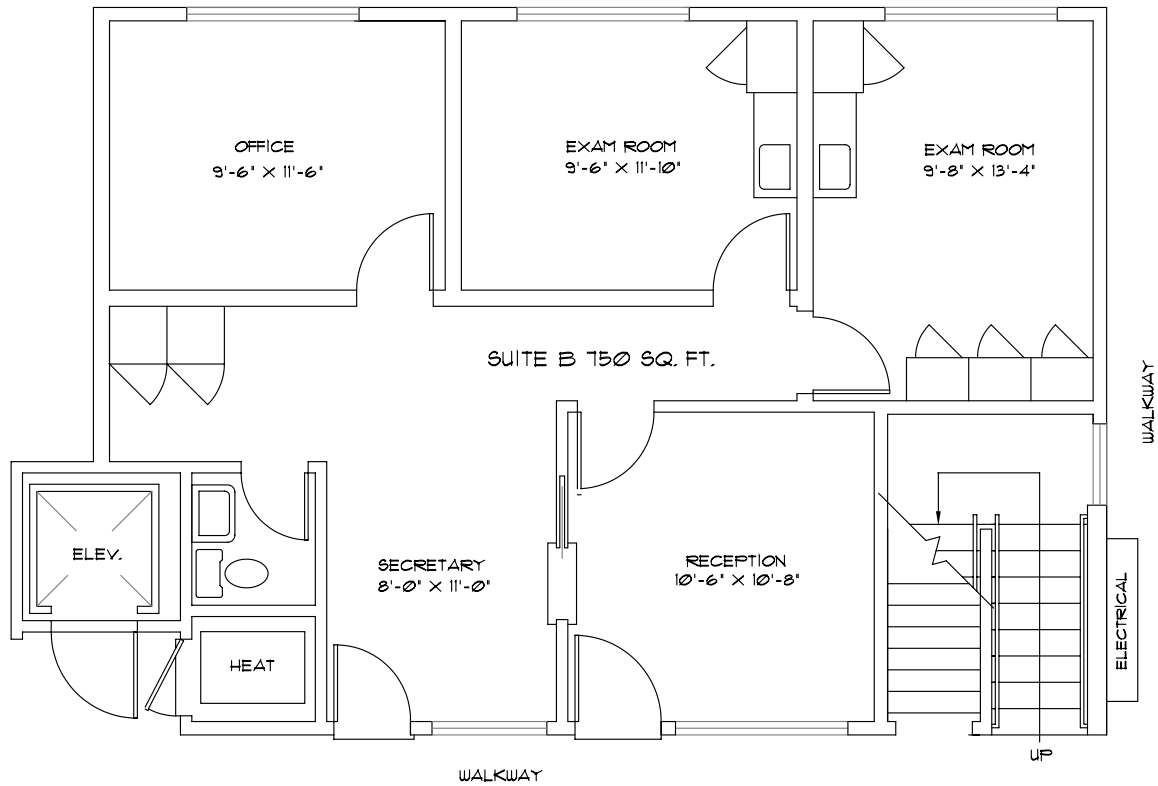
[nmrk.com](http://nmrk.com)

# NEWMARK

The distributor of this communication is performing acts for which a real estate license is required. The information contained herein has been obtained from sources deemed reliable but has not been verified and no guarantee, warranty or representation, either express or implied, is made with respect to such information. Terms of sale or lease and availability are subject to change or withdrawal without notice. MP-801 • 05/24

---

## Suite B Floor Plan



---

*For information, please contact:*

**Ger Wong**

Senior Managing Director

t 408-987-4134

geri.wong@nmrk.com

CA RE License #01142432

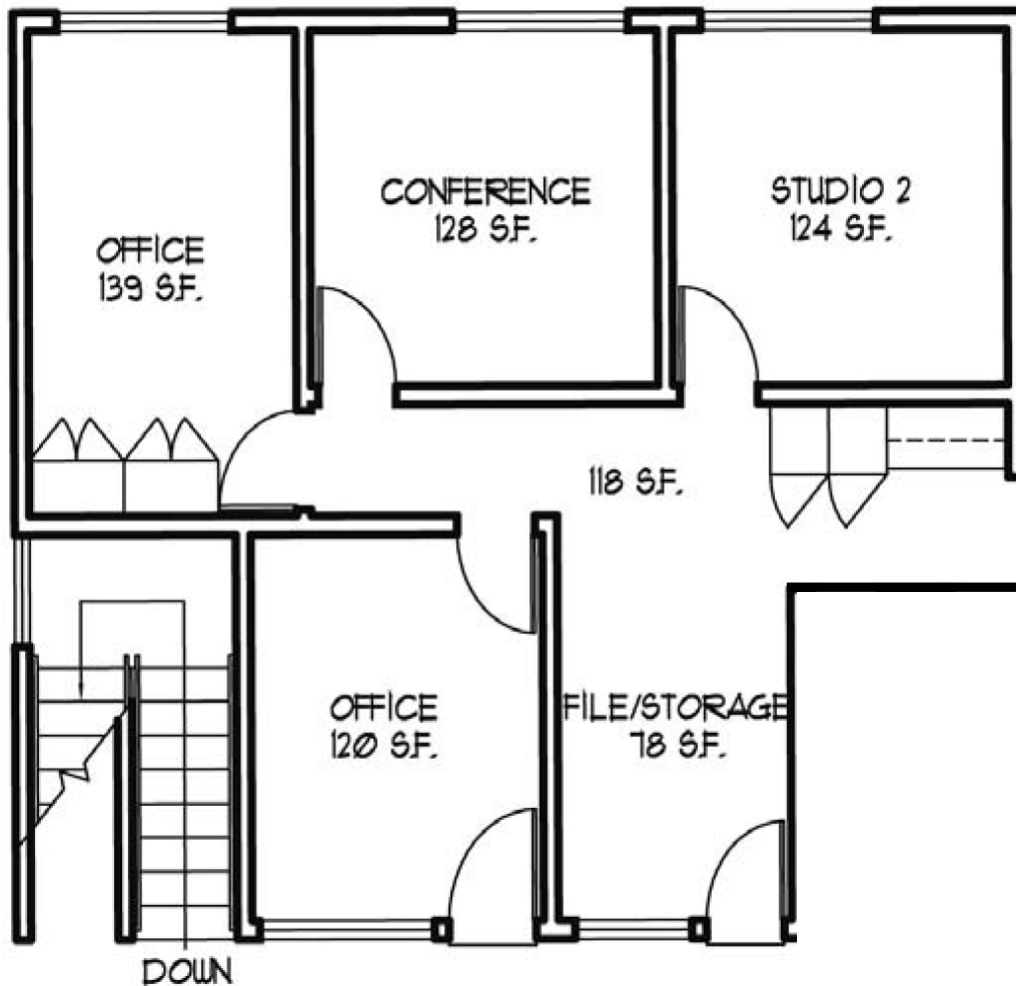
[nmrk.com](http://nmrk.com)

**NEWMARK**

The distributor of this communication is performing acts for which a real estate license is required. The information contained herein has been obtained from sources deemed reliable but has not been verified and no guarantee, warranty or representation, either express or implied, is made with respect to such information. Terms of sale or lease and availability are subject to change or withdrawal without notice. MP-801 • 05/24

---

Suite C Floor Plan



---

*For information, please contact:*

**Ger Wong**

Senior Managing Director

t 408-987-4134

geri.wong@nmrk.com

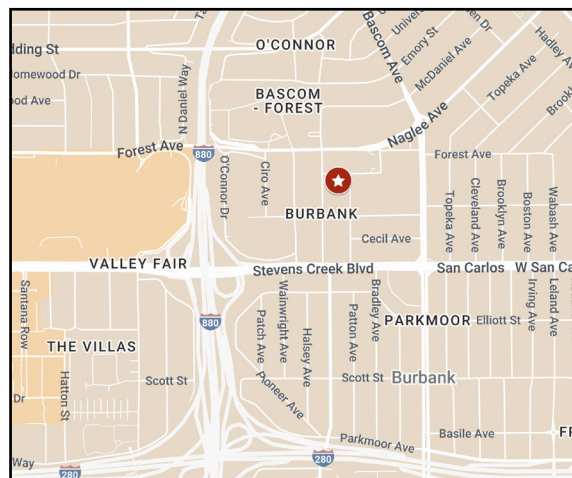
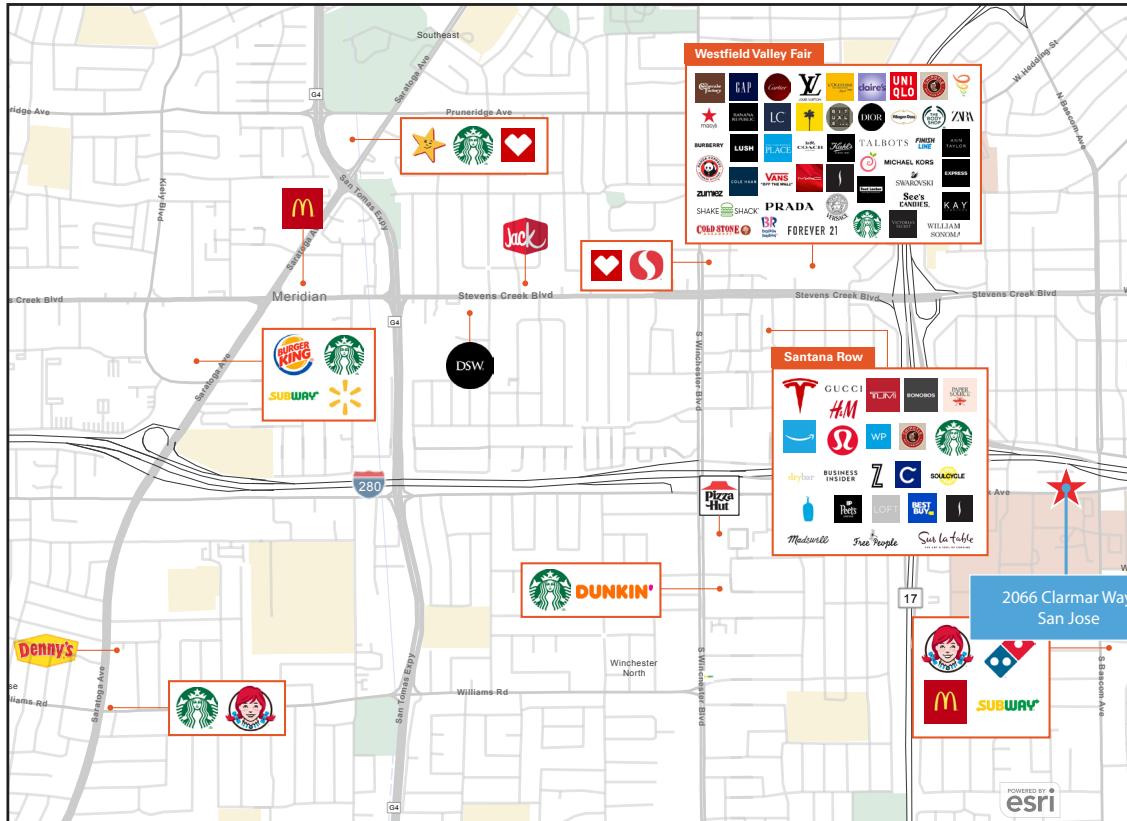
CA RE License #01142432

[nmrk.com](http://nmrk.com)

**NEWMARK**

The distributor of this communication is performing acts for which a real estate license is required. The information contained herein has been obtained from sources deemed reliable but has not been verified and no guarantee, warranty or representation, either express or implied, is made with respect to such information. Terms of sale or lease and availability are subject to change or withdrawal without notice. MP-801 • 05/24

## Amenities Map



For information, please contact:

### Geri Wong

Senior Managing Director

t 408-987-4134

geri.wong@nmrk.com

CA RE License #01142432

[nmrk.com](http://nmrk.com)

# NEWMARK

The distributor of this communication is performing acts for which a real estate license is required. The information contained herein has been obtained from sources deemed reliable but has not been verified and no guarantee, warranty or representation, either express or implied, is made with respect to such information. Terms of sale or lease and availability are subject to change or withdrawal without notice. MP-801 • 05/24