

Light Industrial Condo Unit FOR SALE

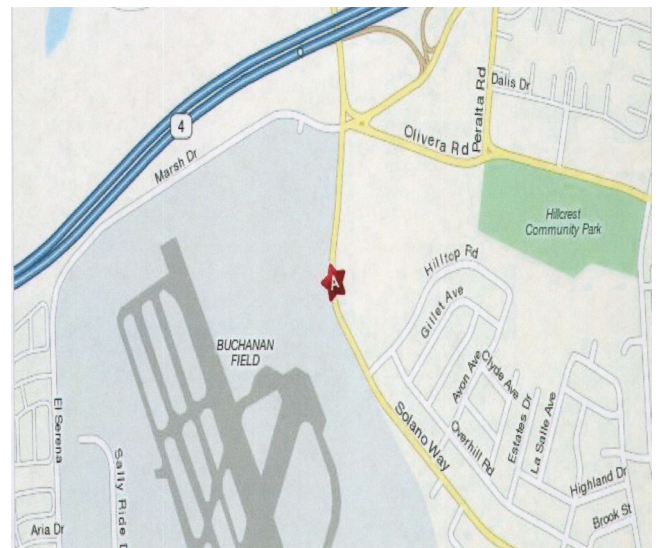
1717 Solano Way, Unit #10
Concord, California



Property Information

- **Price \$430,000 (+/- \$351. Per Sq. Ft.)**
- **Unit is 1,225 +/- Total Square Feet**
- **Has One Rest Room in the unit**
- **Includes 300 Square +/- Sq. Ft. Office**
- **Skylight & Ceiling Insulation in Warehouse**
- **Approx. 12' Warehouse Clear Height**
- **10' High x 10' Wide Grade Level Door**
- **HVAC Unit Heats and Cools Warehouse**
- **100 Amp 110/208 Volt 3 Phase Power**
- **Great Access to Highway 4 & I-680**
- **Two (2) Reserved Parking Spaces**

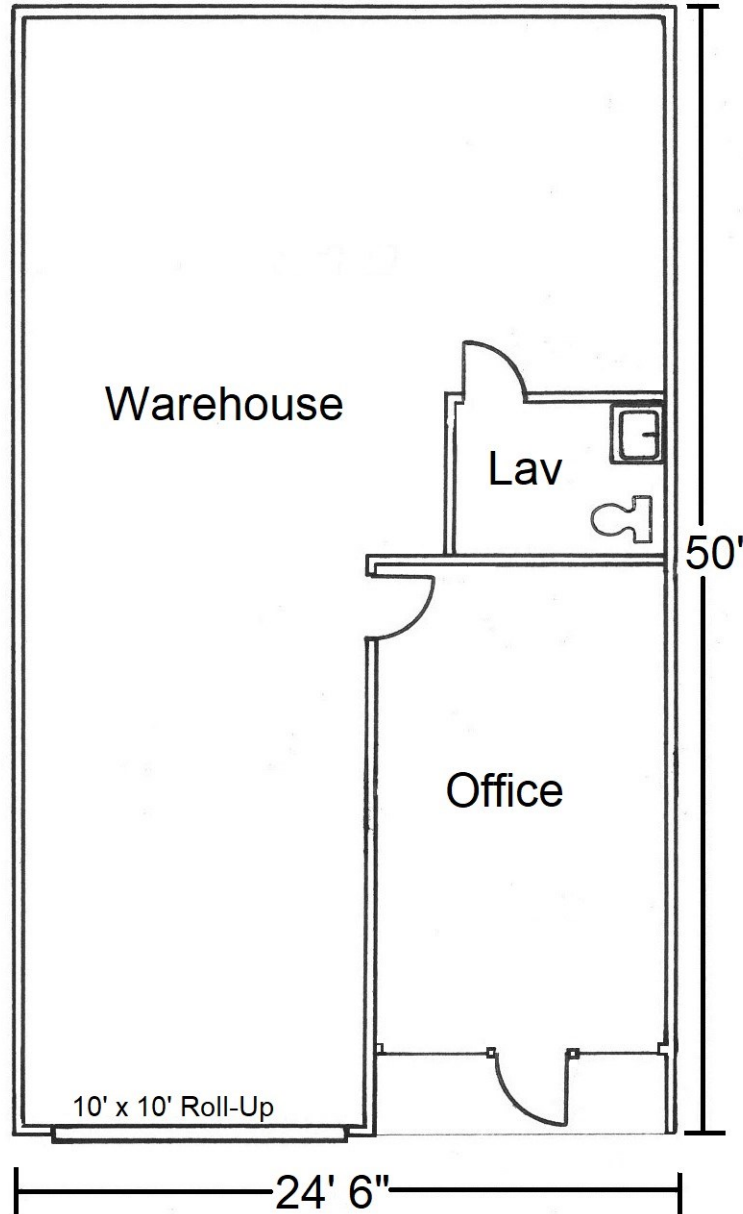
Location Map



Contact Listing Broker:
Thomas Caple
Director
(510) 908-0505
tom@dpccommercial.com
BRE# 01089011

Deutscher Properties Corp.
370 Civic Drive
Pleasant Hill, CA
Office (925) 676-6166
Fax (925) 676-6177
www.dpccommercial.com

**For Sale 1717 Solano Way, Unit #10
Concord, CA**



Contact Listing Broker:
Thomas Caple
Director
(510) 908-0505
tom@dpccommercial.com

Deutscher Properties Corp.
370 Civic Drive
Pleasant Hill, CA
Office (925) 676-6166
Fax (925) 676-6177
www.dpccommercial.com