

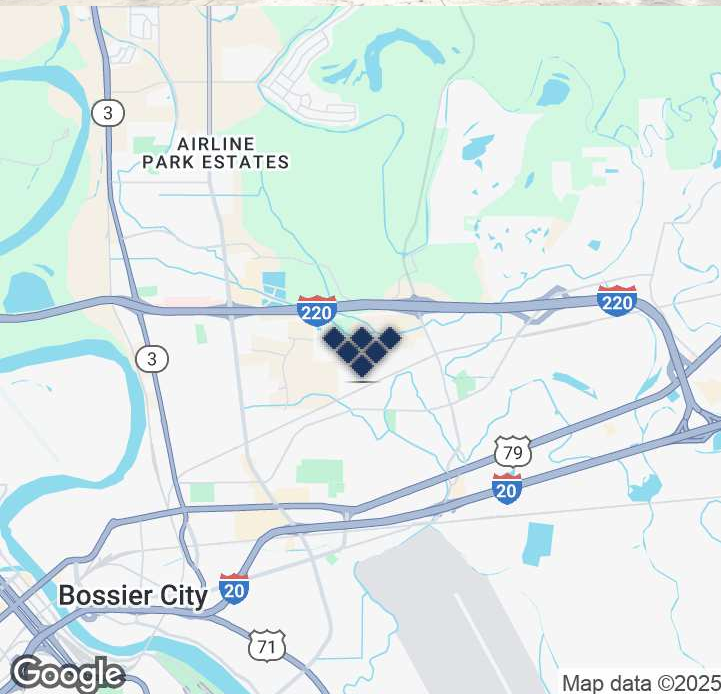


Class A Industrial North Bossier City 16,156 SF

Melissa Riddick, SIOR
Direct 318.698.1110
Mobile 318.218.4987
MelissaR@Sealynet.com

Roland Ricou
Direct 318.698.1109
Mobile 318.773.3357
RolandR@Sealynet.com

Sealy Real Estate Services
333 Texas Street, Suite 1050
Shreveport, LA 71101
318.222.8700
www.sealynet.com



Offering Summary

Lease Rate:	\$10,500.00 per month (NNN)
Building Size:	16,156 SF
Office Space:	Yes
Lot Size:	1.07 Acres
Year Built:	2019

Location Overview

Located in the heart of Bossier City's Industrial District, this property is ideally situated in North Bossier, a high-growth area with significant economic expansion. The site offers excellent accessibility, being just 1.1 miles from I-220, 2.5 miles from Airline Drive, and 2.6 miles from Hwy 79.

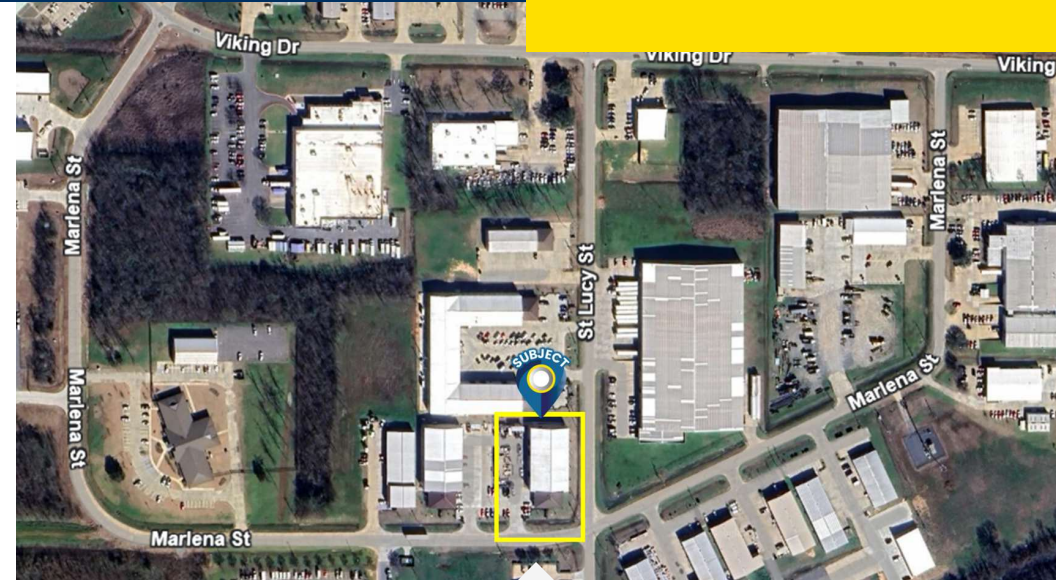
Building Name	Class A Industrial Bossier City
Property Type	Industrial
Property Subtype	Industrial Office/Flex Space
Building Size	16,156 SF
Lot Size	1.07 Acres
Building Class	A
Year Built	2019
Number of Floors	1

The building is fully heated and cooled, with a main office area totaling approximately 2,596 square feet. This front office includes three private offices, a conference room, two restrooms, a breakroom, a data room, and a mechanical room.

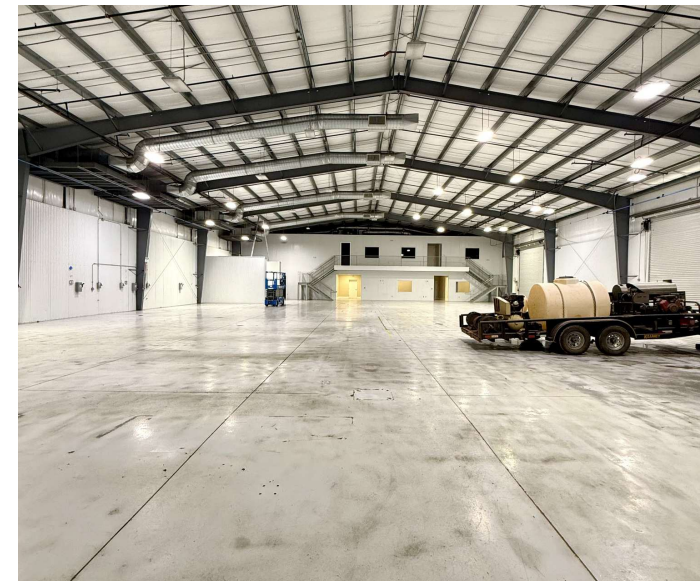
Additionally, the warehouse's ground floor office area provides approximately 1,408 square feet, featuring one office, a conference room (which could serve as an additional office), a breakroom, and two restrooms.

An upper mezzanine level offers another 790 square feet of office space with three offices and extra storage. The warehouse and shop area spans 12,152± square feet with a clear height of 22 feet, equipped with three grade-level doors (16'W x 14'H) on the building's west side, opening onto a 12,150± square foot fenced yard.

The total site encompasses 1.07 acres, making this property a versatile and functional choice for industrial and commercial needs.



- - Prime location in Bossier City, LA
- - Spacious and customizable interior layout
- - Modern and professional exterior design
- - Dedicated parking spaces for convenience
- - High visibility from Marlena St



Sealy Real Estate Services
333 Texas Street, Suite 1050
Shreveport, LA 71101
318.222.8700
www.sealynet.com

Melissa Riddick, SIOR
Direct 318.698.1110
Mobile 318.218.4987
MelissaR@Sealynet.com

Roland Ricou
Direct 318.698.1109
Mobile 318.773.3357
RolandR@Sealynet.com

All information set forth in this brochure has been obtained from the owner, personal observation, or other reliable sources. Sealy Real Estate Services, LLC does not guarantee the accuracy of this information and makes no representations or warranties, expressed or implied, in this brochure. Information contained herein is subject to change without notice.