

For Sale

NAIDESCO

6369 Clayton Rd
Clayton, MO 63117



Property Highlights



For Sale
7,200 SF on .64 AC



Former Bank with 4
Drive-Thru Lanes



Approx. 1/4 Mile
West of I-64



Newly REDUCED
Sale Price: \$1,900,000

For more information, please contact:



Peter Sheahan

d (314) 994 - 4081
c (314) 420 - 3095
psheahan@naidesco.com



Meghan Donovan

d (314) 994 - 2320
c (314) 810 - 9213
mdonovan@naidesco.com

NAIDESCO

8112 Maryland Ave, Suite 300
St. Louis, MO 63105
(314) 994 - 4800
naidesco.com

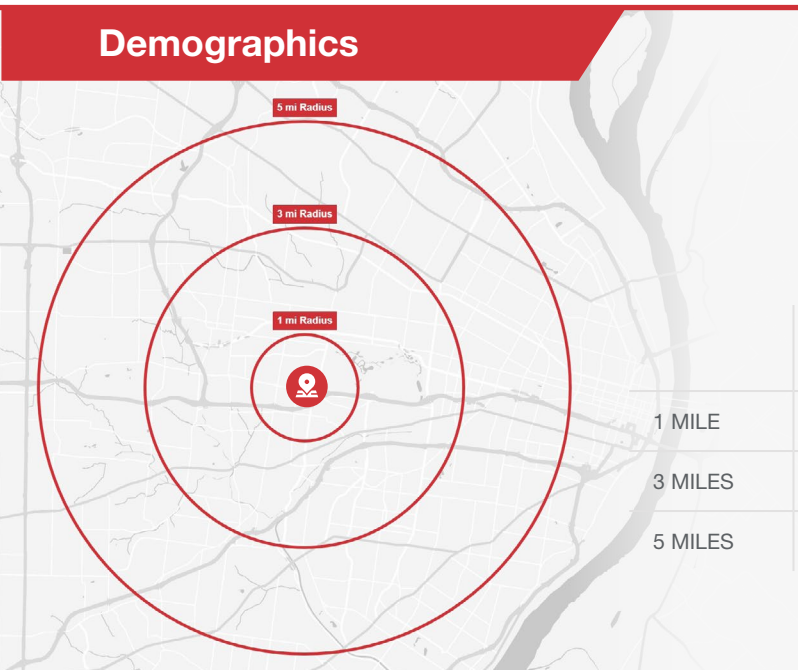
Property Features

- Former bank with 4 drive-thru lanes
- 7,200 SF building on 0.64 acre
- Full unfinished basement
- 17 parking spaces, can be reconfigured for additional spaces
- Located at the signalized intersection of Clayton Rd & DeMun Ave with access points from each road
- Directly across the street from SSM St. Mary's Hospital
- Approx. 1/4 mile west of I-64 & Clayton Rd / Skinker Blvd interchange
- Zoned C-2 General Commercial, Clayton Road Urban Design District in the City of Clayton

 **REDUCED Sale Price: \$1,900,000**



Demographics



POPULATION



DAYTIME
POPULATION



AVG. HH
INCOME



HOUSEHOLDS

1 MILE

12,455

10,758

\$159,100

7,143

3 MILES

155,809

105,493

\$140,141

68,448

5 MILES

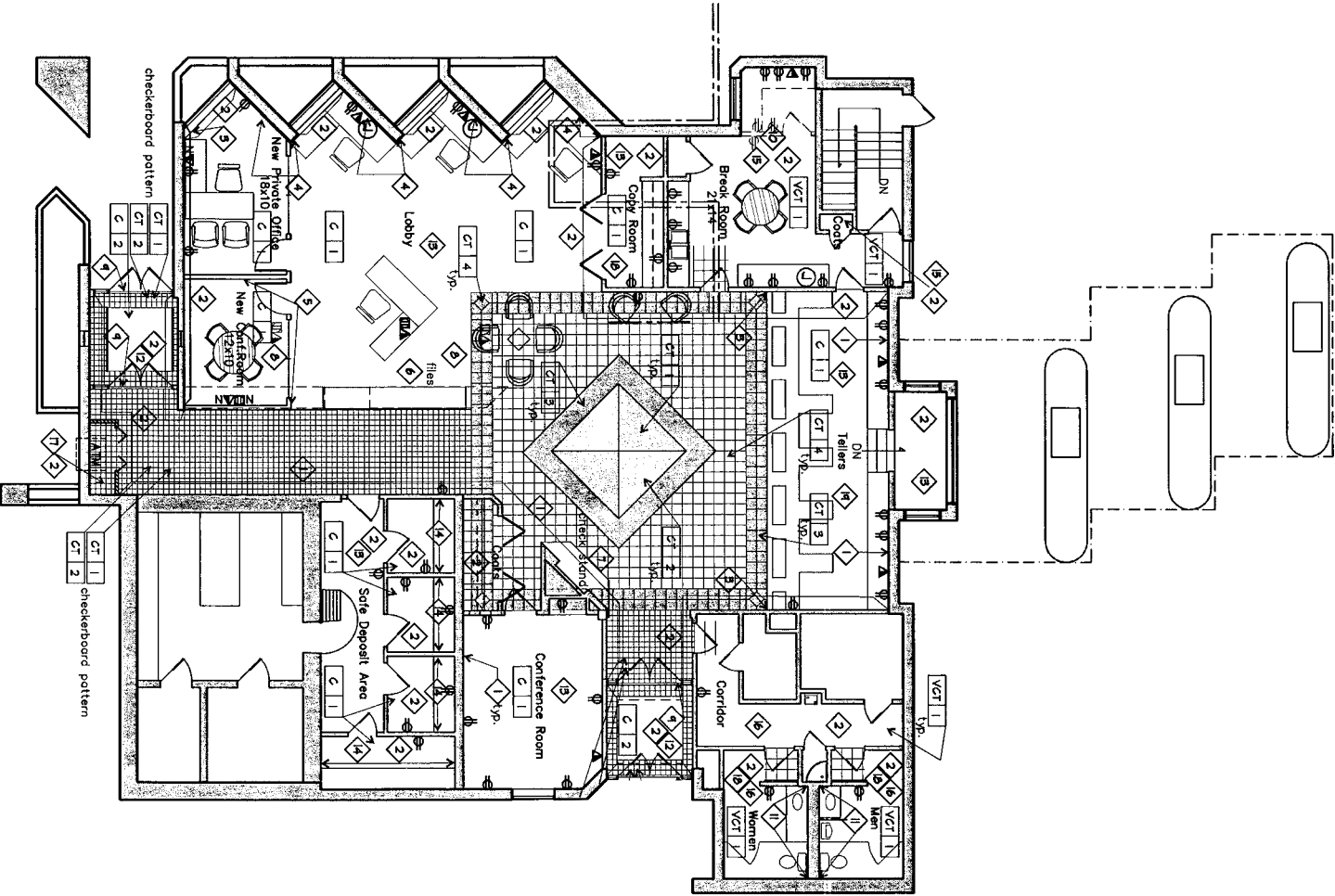
312,614

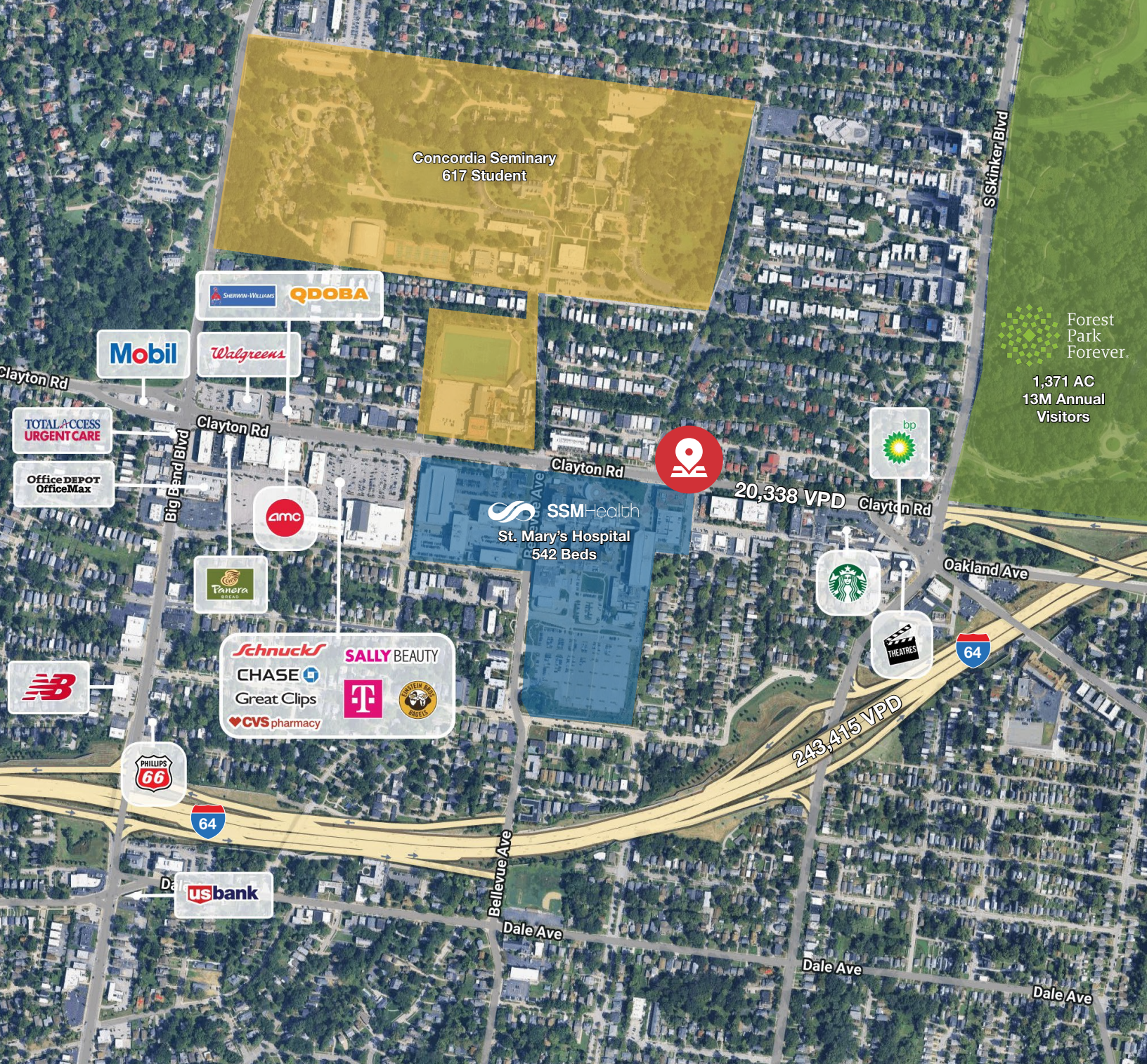
342,452

\$120,678

163,070

Floor Plan





Peter Sheahan

d (314) 994 - 4081
c (314) 420 - 3095
psheahan@naidesco.com



Meghan Donovan

d (314) 994 - 2320
c (314) 810 - 9213
mdonovan@naidesco.com



NAIDESCO

8112 Maryland Ave, Suite 300
St. Louis, MO 63105
(314) 994 - 4800

naidesco.com