

# BURNT POPLAR BUSINESS PARK

GREENSBORO

6348 Burnt Poplar Road  
Greensboro, NC 27409



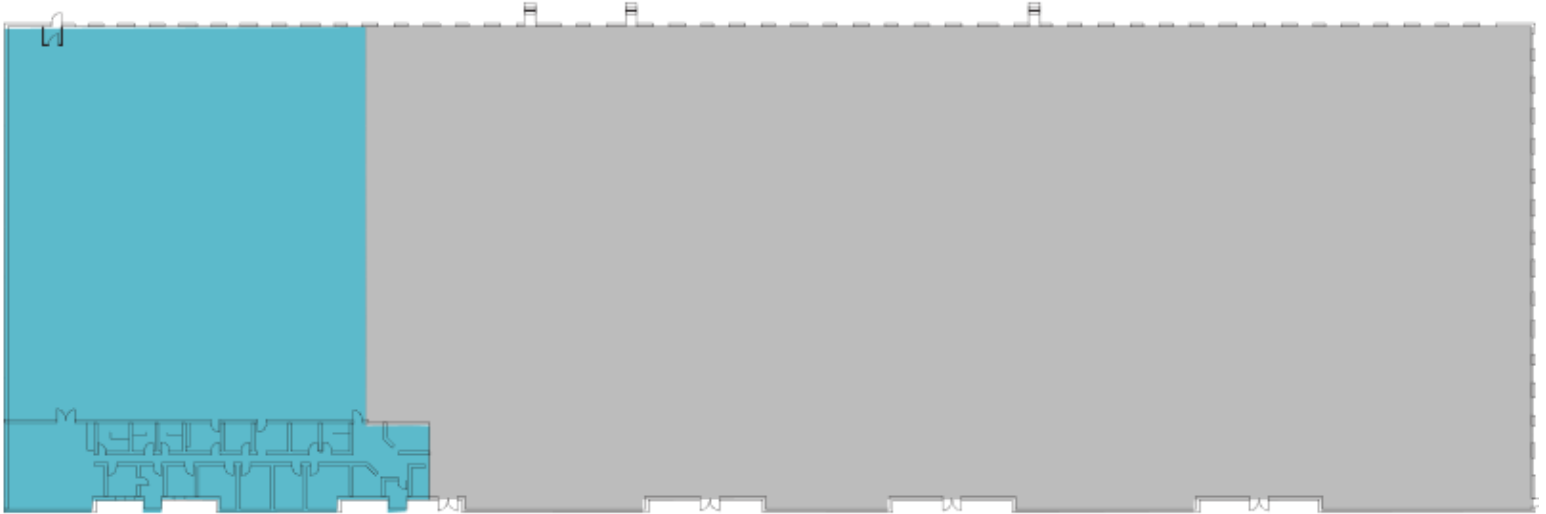
FOR LEASE

±31,000 SF



LEASED BY





## 6348 BURNT POPLAR ROAD - SUITE C

**Available SF:** 31,000 SF

**Lighting:** Motion sensor LED

**Office SF:** 6,554 SF

**Sprinkler:** Wet System

**Clear Height:** 20' from first column line

**Dock Doors:** 10 (8' x 9' W/Bumpers, seals and edge of dock levelers)

**Column Spacing:** 25' x 67'

**Drive-In Door:** 1 (14' x 12')

**Power:** Panel shows 1200 amp 208Y/120

**Zoning:** HI (Heavy Industrial)



# CONTACT INFORMATION

6348 BURNT POPLAR RD,  
GREENSBORO NC 27409

**Ryan Conboy, SIOR**

ryan.conboy@cushwake.com  
(336) 812-3303

**Bobby Finch**

bobby.finch@cushwake.com  
(336) 812-3303

This document is for informational purposes only and does not constitute an offer or acceptance of a lease. Any lease agreement must be in writing and signed by the landlord. No representations or warranties are made except as expressly stated in a signed lease. Information is provided "as is" and may be subject to errors or change without notice.



LEASED BY

