

FOR LEASE

2941 W 19TH AVE, DENVER, CO 80204



PROPERTY HIGHLIGHTS

4 PRIVATE OFFICES & 1 CONFERENCE ROOM

....

MODERN, UPDATED, OPEN CONCEPT WORKSPACE

....

FULLY FURNISHED WITH COLLABORATIVE WORKSTATIONS

....

ABUNDANT PARKING AND LOCATION DIRECTLY NEXT TO

EMPOWER FIELD

....

FULLY EQUIPPED KITCHEN WITH BEER TAPS

....

ADVANCED SERVER ROOM

....

SOLAR PANELS AND LOW UTILITY COSTS

....

HEAVY POWER - 400 AMPS, CENTURY LINK FIBER

PROPERTY OVERVIEW

LIST PRICE \$18.00/SF NNN

NNN \$8.00

PARKING 38 Spaces

BUILDING TYPE Office

YEAR BUILT 1965

BUILDING SIZE 5,964 SF

TOTAL LOT AREA 15,246 SF (.35 AC)

PETER SENGLMANN

VICE PRESIDENT

T: 303.962.9552

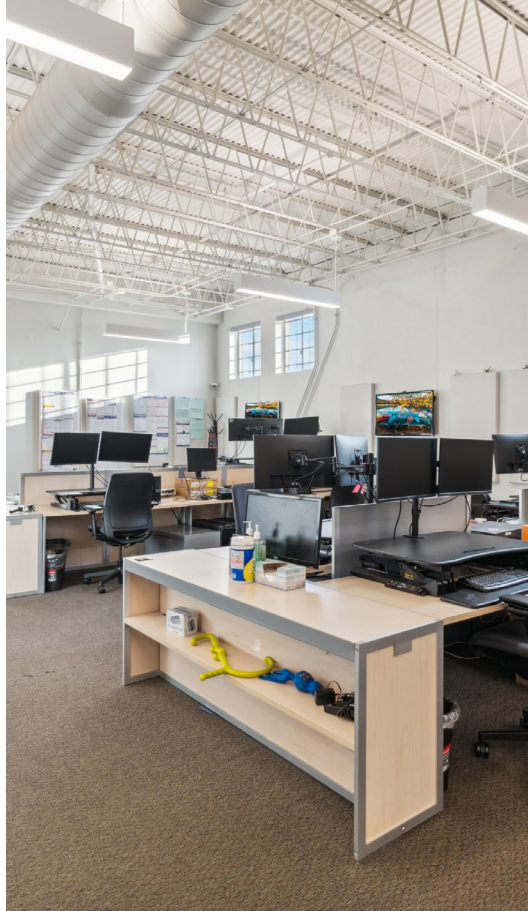
PSENGLMANN@PINNACLERA.COM

HAYLEY KONOWALCHUK

ASSOCIATE ADVISOR

T: 619.742.5525

HKONOWALCHUK@PINNACLERA.COM



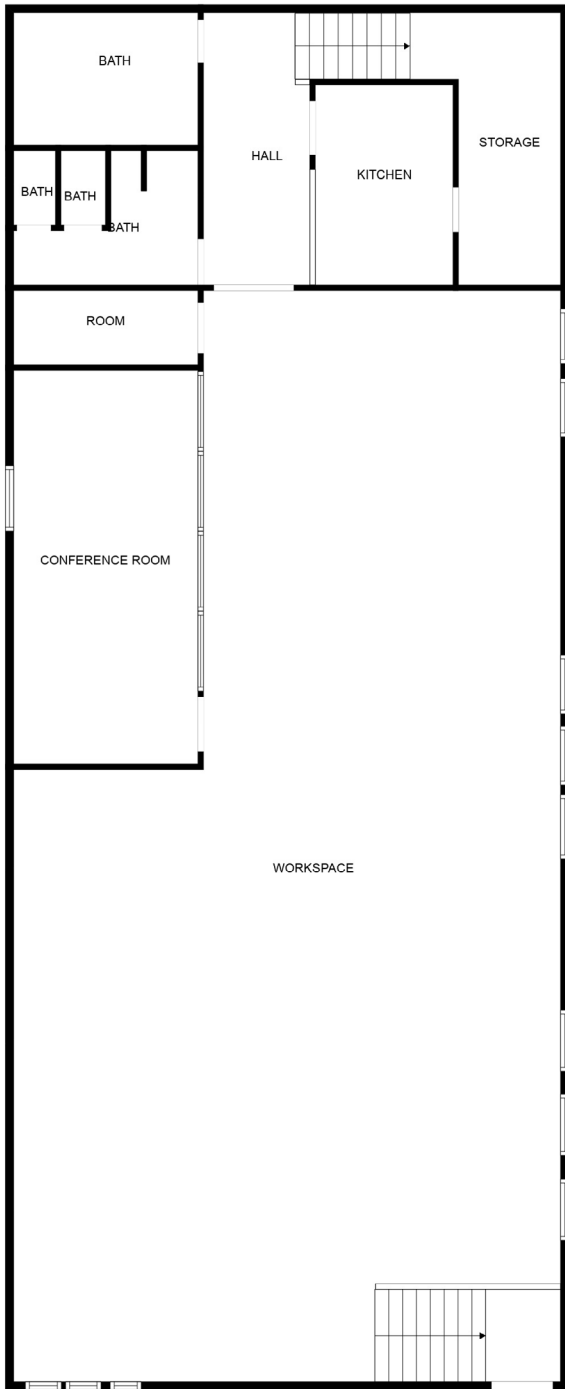
PETER SENGLMANN
 VICE PRESIDENT
 T: 303.962.9552
 PSENGELMANN@PINNACLERA.COM

HAYLEY KONOWALCHUK
 ASSOCIATE ADVISOR
 T: 619.742.5525
 HKONOWALCHUK@PINNACLERA.COM

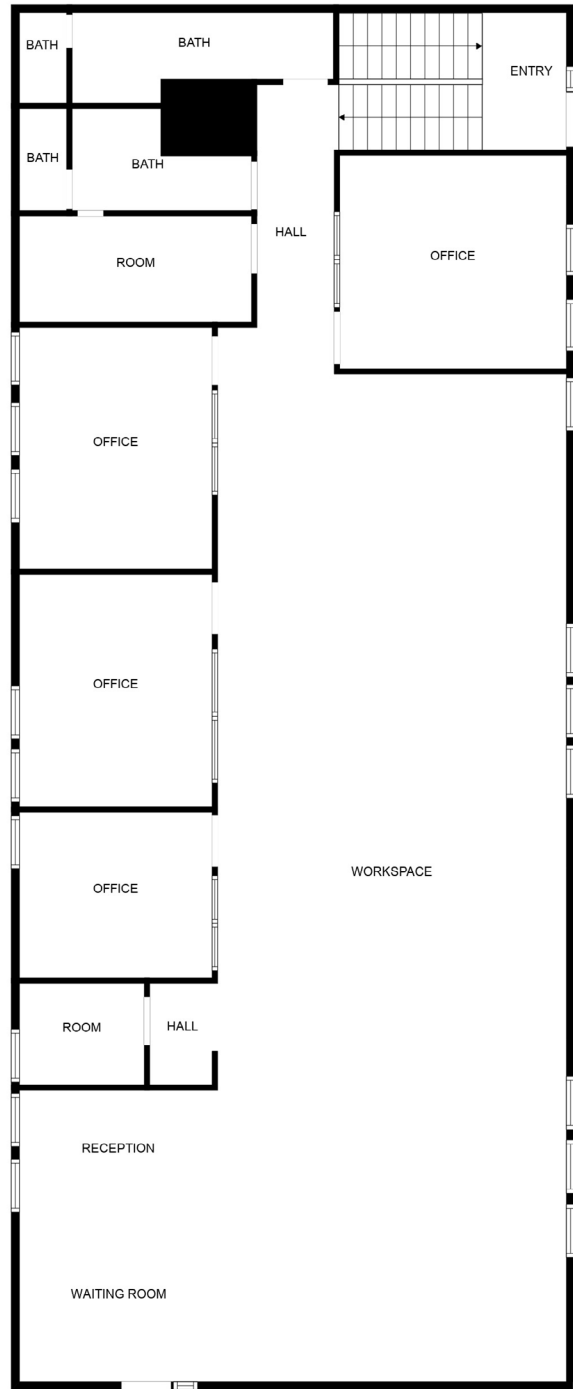
One Broadway Suite A300 | Denver, CO 80203 | T: 303.962.9555 | www.PinnacleREA.com



FLOOR PLAN



FLOOR 1



FLOOR 2

PETER SENGLMANN
VICE PRESIDENT
T: 303.962.9552
PSENGELMANN@PINNACLAREA.COM

HAYLEY KONOWALCHUK
ASSOCIATE ADVISOR
T: 619.742.5525
HKONOWALCHUK@PINNACLAREA.COM



2941 W 19TH AVE

FEDERAL-BLVD



WEST COLFAX AVE



PETER SENGLMANN

VICE PRESIDENT

T: 303.962.9552

PSENGLMANN@PINNACLERA.COM

HAYLEY KONOWALCHUK

ASSOCIATE ADVISOR

T: 619.742.5525

HKONOWALCHUK@PINNACLERA.COM

One Broadway Suite A300 | Denver, CO 80203 | T: 303.962.9555 | www.PinnacleREA.com

