



**For Sale**  
**Core to Shore Property**  
**700 S. Walker**  
**.24 ± Acres**  
**Sale / Lease Back**

**HIGHLIGHTS:**

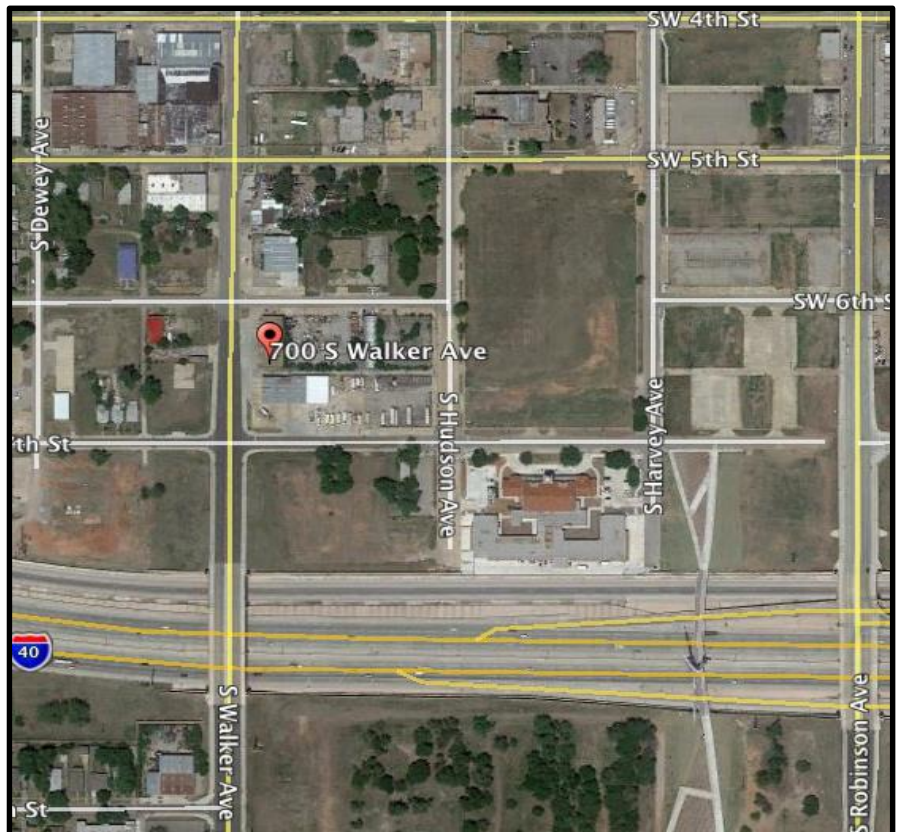
- Located In Core to Shore / Central Park Redevelopment Area
- Owner Is Willing to Lease back
- Great Corner Location With Frontage on SW 6<sup>th</sup> St & Walker
- OKC's New Central Park Will Be Just 1 Block East.
- New Crosstown Boulevard Will Be 3 Blocks North
- 140 Feet of Frontage on S Walker & 75 Feet of Frontage on SW 6<sup>th</sup>

**SPECIFICATIONS:**

- 7,000± SF
- .24± Acres

**PRICING: Undisclosed**  
**Accepting Offers**

For More Information Please Contact:  
Terry Klaus  
405-476-3400  
TKlaus@klausrealty.com



The above information has been obtained from sources believed reliable. While we do not doubt its accuracy, we have not verified it and make no guarantee, warranty or representation as to its accuracy. Any projections, opinions, assumptions, or estimates used are for example only and do not represent the current or future performance of the property. You and your advisors should conduct a careful, independent investigation of the property to determine to your satisfaction the suitability of the property for your needs. Offering prices are for the entire property unless otherwise stated. Offering prices and terms are subject to change without notice. Property is subject to prior sale, prior lease, or withdrawal from the market, without notice.