

FOR SUBLEASE



1450 BEALE STREET
ST. CHARLES MO 63301



15,701 - 20,718
SF Available



Term Thru:
7/1/2030



Plug & Play
move in ready



Building Signage
Available



Contact Broker
for Rate

Brandon Wappelhorst, CCIM, SIOR
bwappelhorst@sansonegroup.com

Tom Bajardi, CCIM, SIOR
tbajardi@sansonegroup.com

Nick Fiquette
nfiquette@sansonegroup.com

Availabilities

Property Features

FLOOR

RSF

2nd

20,718

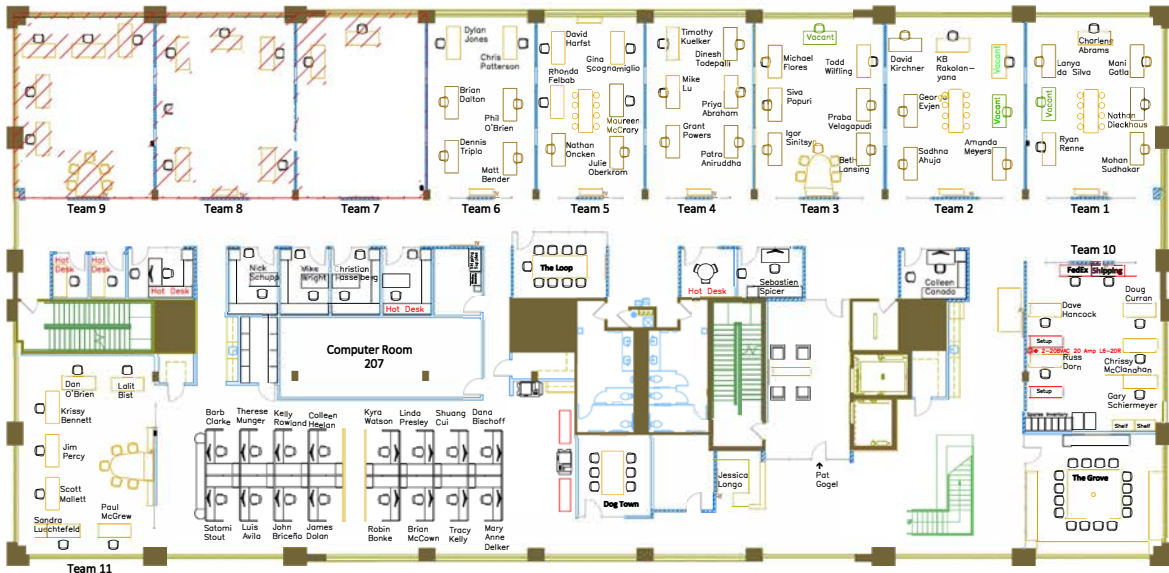
3rd

15,701

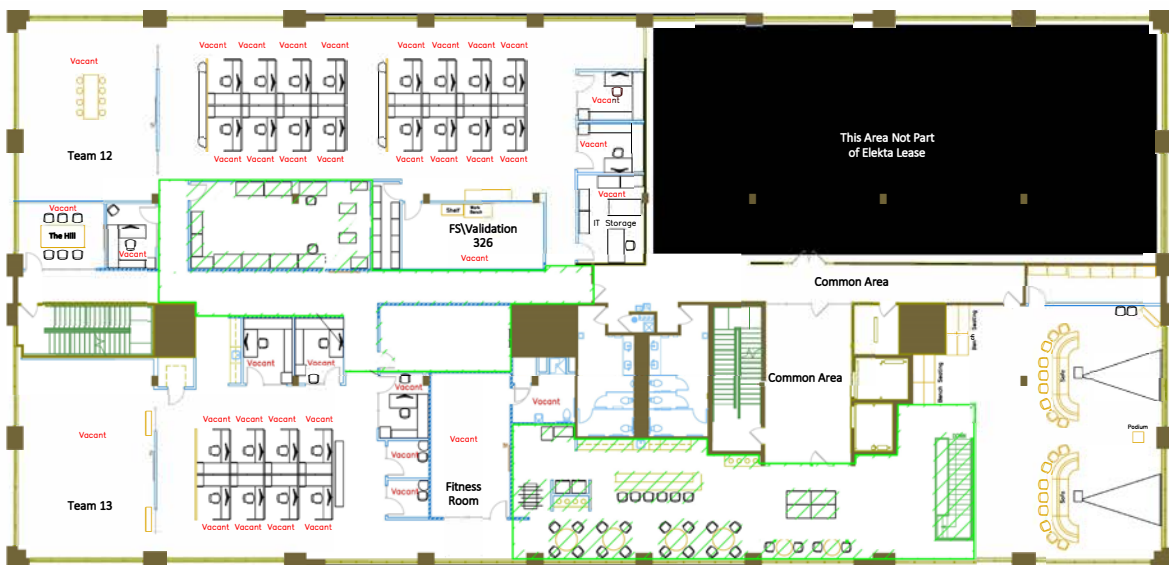
- Plug & Play move in ready sublease
- FF&E Available
- Located in Streets of St Charles with Abundant Amenities
- Building Signage Available
- Highly visible from I-70
- 4.0/1,000 Parking Ratio
- Term Thru: 7/1/2030
- **Contact Broker for Rate**

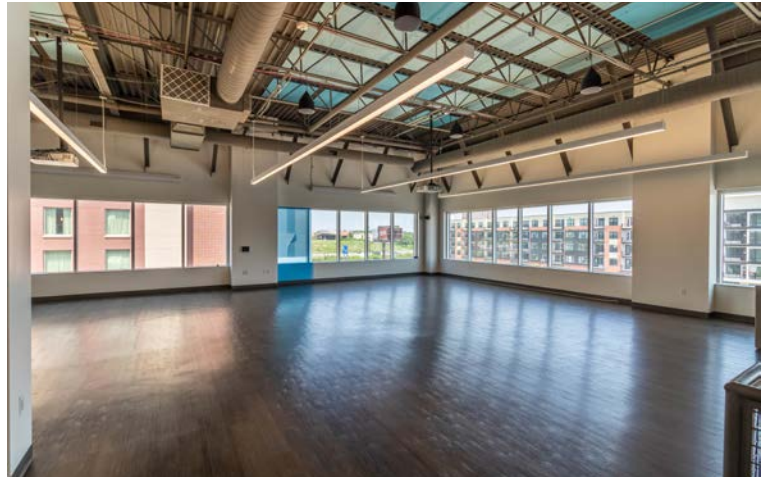
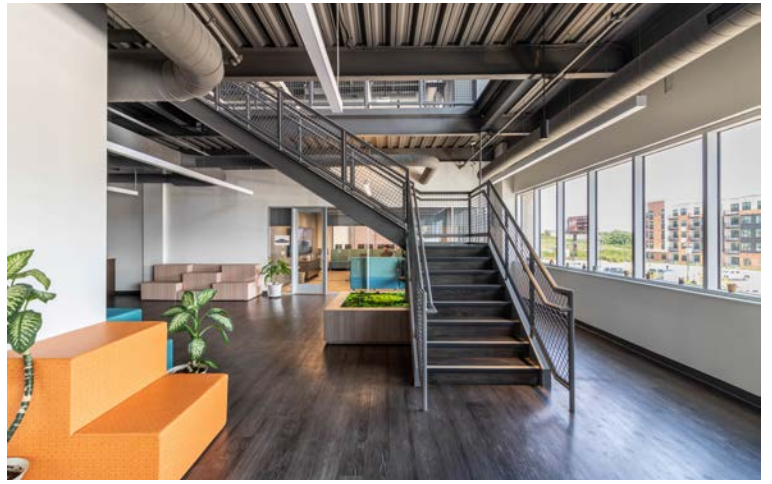
Floor Plans

2nd Floor | 20,718 SF Available



3rd Floor | 15,701 SF Available







Riverpointe Development
 - \$350 Million office, retail, hotels and residential developments



Tom Bajardi, CCIM SIOR
 tbajardi@sansonegroup.com

Brandon Wappelhorst, CCIM, SIOR
 bwappelhorst@sansonegroup.com

Nick Fiquette
 nfiquette@sansonegroup.com

Kelly Spencer
 kspencer@sansonegroup.com



314.727.6664

SANSONEGROUP.COM

120 S. Central Ave. | Ste. 500 | St. Louis, MO 63105

The information contained herein is not warranted, although it has been obtained from the owner of the property or from other sources that we deem reliable. It is subject to change without notice. Seller and broker make no representation as to the environmental condition of the property and recommend purchaser's independent investigation.