

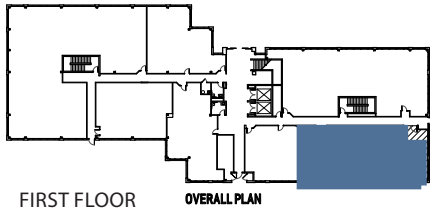
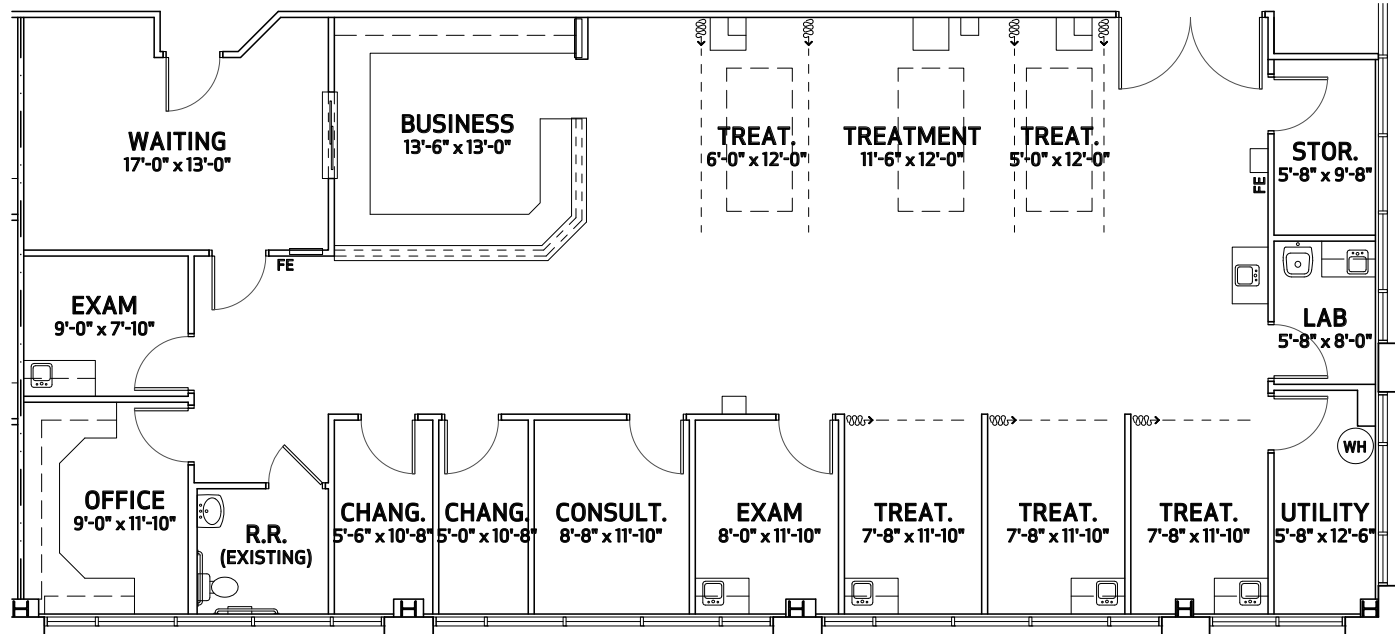
# Honor Health Tempe Medical Center

## MEDICAL OFFICE BUILDING FOR LEASE

1492 South Mill Avenue, Tempe, AZ 85281

**Suite 103**

2,951 RSF



MARGARET LLOYD  
Senior Vice President  
623.344.4558 direct  
602.828.7214 cell  
[margaret.lloyd@theplazaco.com](mailto:margaret.lloyd@theplazaco.com)

MIKE MCWILLIAMS  
Leasing Associate  
623.344.4530 direct  
602.803.9029 cell  
[michael.mcwilliams@theplazaco.com](mailto:michael.mcwilliams@theplazaco.com)



Copyright © 2025 Plaza Companies. All rights reserved. The information above has been obtained from sources believed reliable. While we do not doubt its accuracy, we make no guarantee, warranty, or representation about it. It is your responsibility to confirm accuracy and completeness. Any projections, opinions, assumptions, or estimates are used for example only and do not represent the current or future performance of the property. The value of this transaction to you depends on tax and other factors which should be evaluated by your tax, financial and legal advisors. You and your advisors should conduct a careful independent

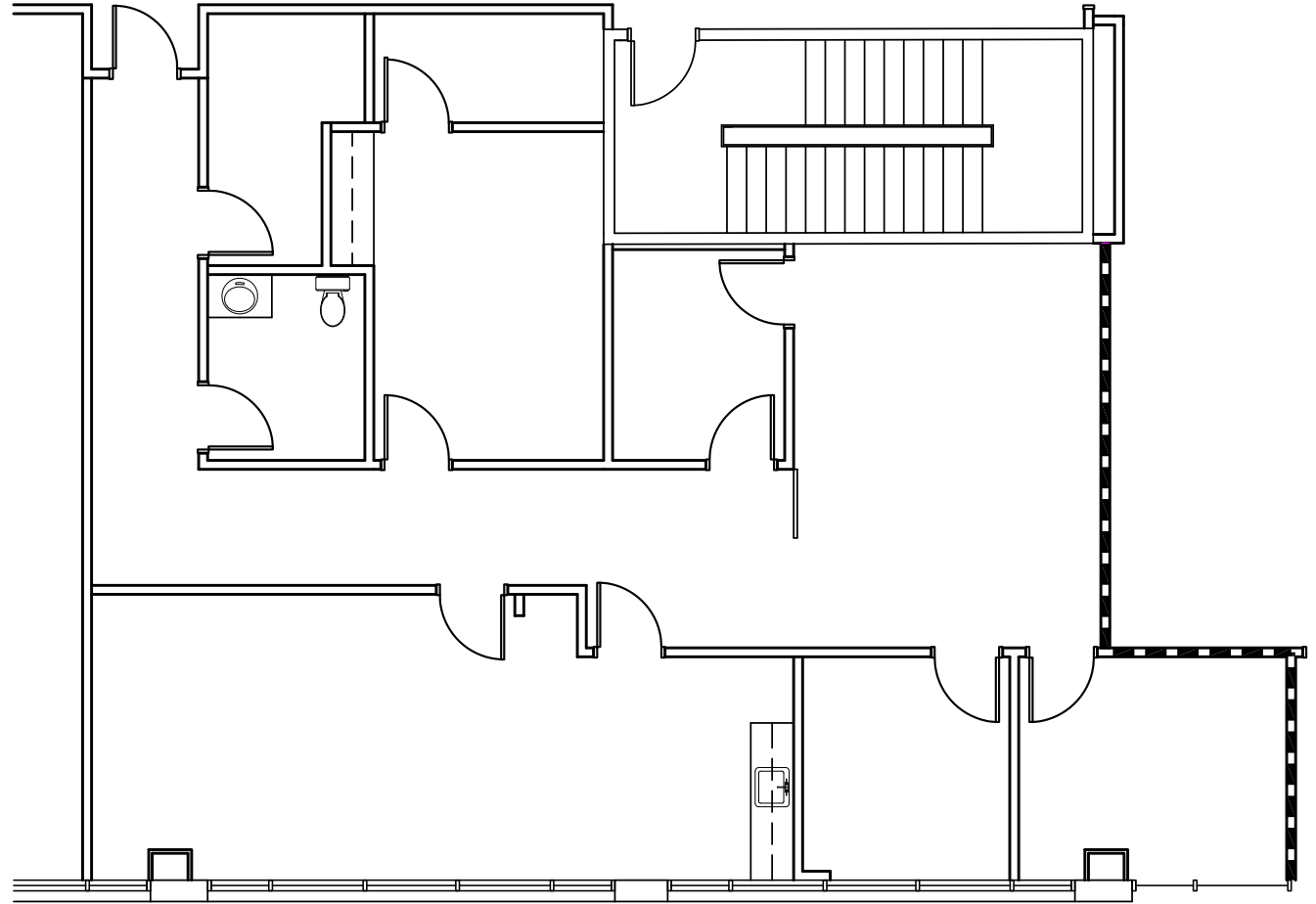
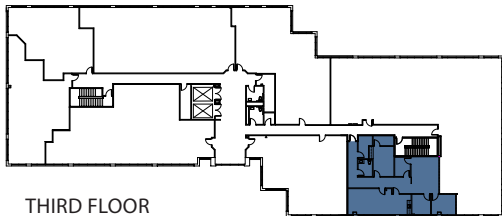
# Honor Health Tempe Medical Center

## MEDICAL OFFICE BUILDING FOR LEASE

1492 South Mill Avenue, Tempe, AZ 85281

Suite 313

2,033 RSF



MARGARET LLOYD  
Senior Vice President  
623.344.4558 direct  
602.828.7214 cell  
[margaret.lloyd@theplazaco.com](mailto:margaret.lloyd@theplazaco.com)

MIKE MCWILLIAMS  
Leasing Associate  
623.344.4530 direct  
602.803.9029 cell  
[michael.mcwilliams@theplazaco.com](mailto:michael.mcwilliams@theplazaco.com)



Copyright © 2025 Plaza Companies. All rights reserved. The information above has been obtained from sources believed reliable. While we do not doubt its accuracy, we make no guarantee, warranty, or representation about it. It is your responsibility to confirm accuracy and completeness. Any projections, opinions, assumptions, or estimates are used for example only and do not represent the current or future performance of the property. The value of this transaction to you depends on tax and other factors which should be evaluated by your tax, financial and legal advisors. You and your advisors should conduct a careful independent