

# OFFICE SPACE FOR LEASE

## MISSION TOWERS

5700 BROADMOOR STREET  
MISSION, KANSAS

UP TO ±70,000 SF  
CONTIGUOUS SPACE  
AVAILABLE ACROSS  
FOUR FLOORS



**NEWMARK**  
ZIMMER

**NICK SUAREZ, SIOR, CCIM**  
Executive Managing Director, Principal  
t 816-512-1012  
nsuarez@nzimmer.com

**TREY DEROUSSE, CCIM**  
Director  
t 816-268-4236  
tderousse@nzimmer.com

# PROPERTY HIGHLIGHTS

- Up to 70,000 SF contiguous space available across four floors
- Landmark location within walking distance to retail and restaurants
- Move-in ready suites available
- Located in the heart of Mission, Kansas
- Secured covered parking
- I-35 and I-635 access at Metcalf Avenue
- Great Kansas/Mission employment base
- On-site building engineer and day porter
- Lease Rate \$18.50/sf, full service



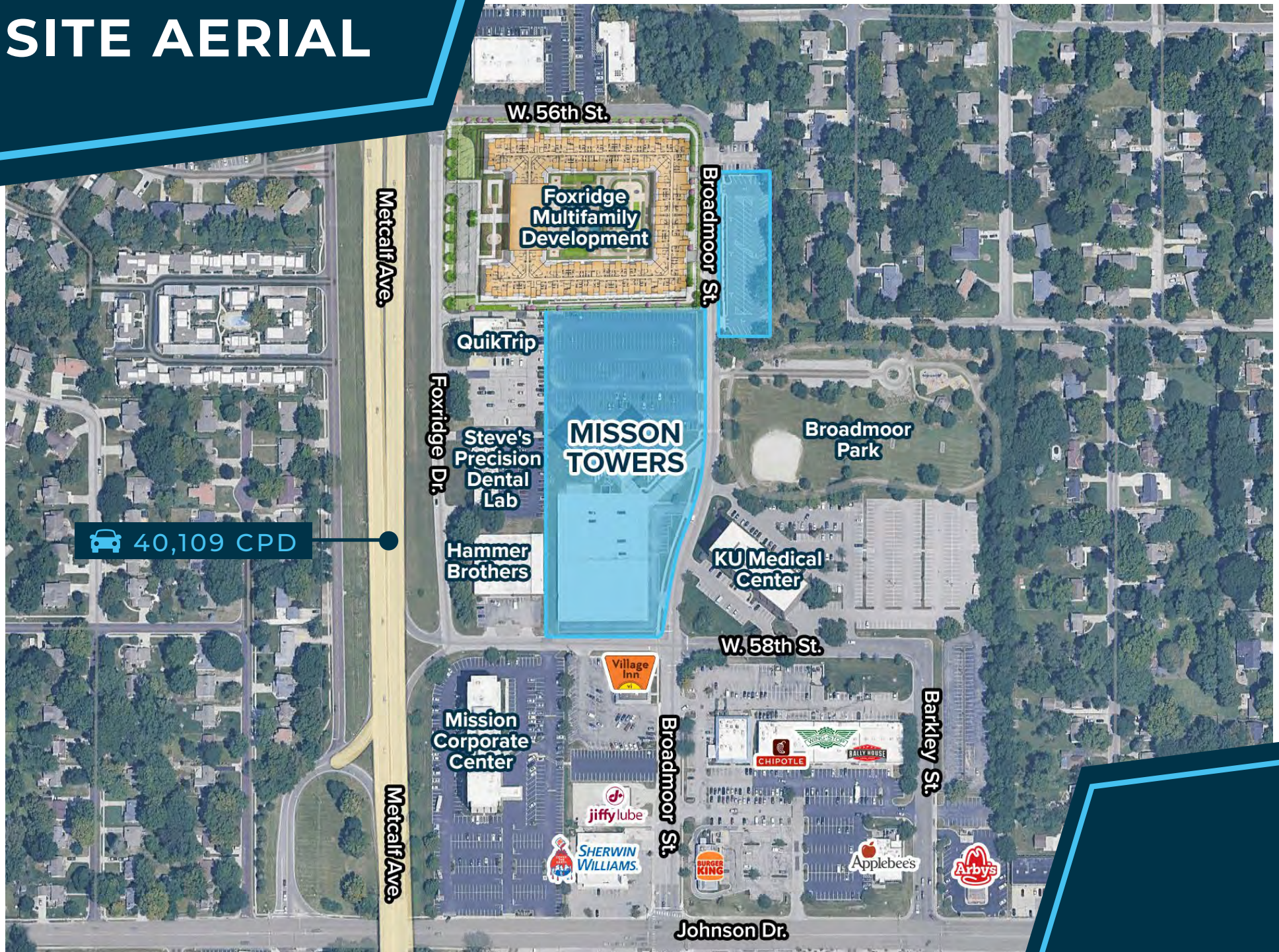


# SITE LOCATION





# SITE AERIAL







# CURRENT AVAILABILITIES

## 1ST FLOOR

3,500 SF & 9,000 SF

## 2ND FLOOR

17,500 SF

## 3RD FLOOR

6,521 SF

## 4TH FLOOR

17,500 SF

## 5TH FLOOR

1,116 SF & 8,562 SF

## 6TH FLOOR

3,690 SF

## 7TH FLOOR

17,500 SF\*

## 8TH FLOOR

17,500 SF\*

## 9TH FLOOR

17,500 SF\*

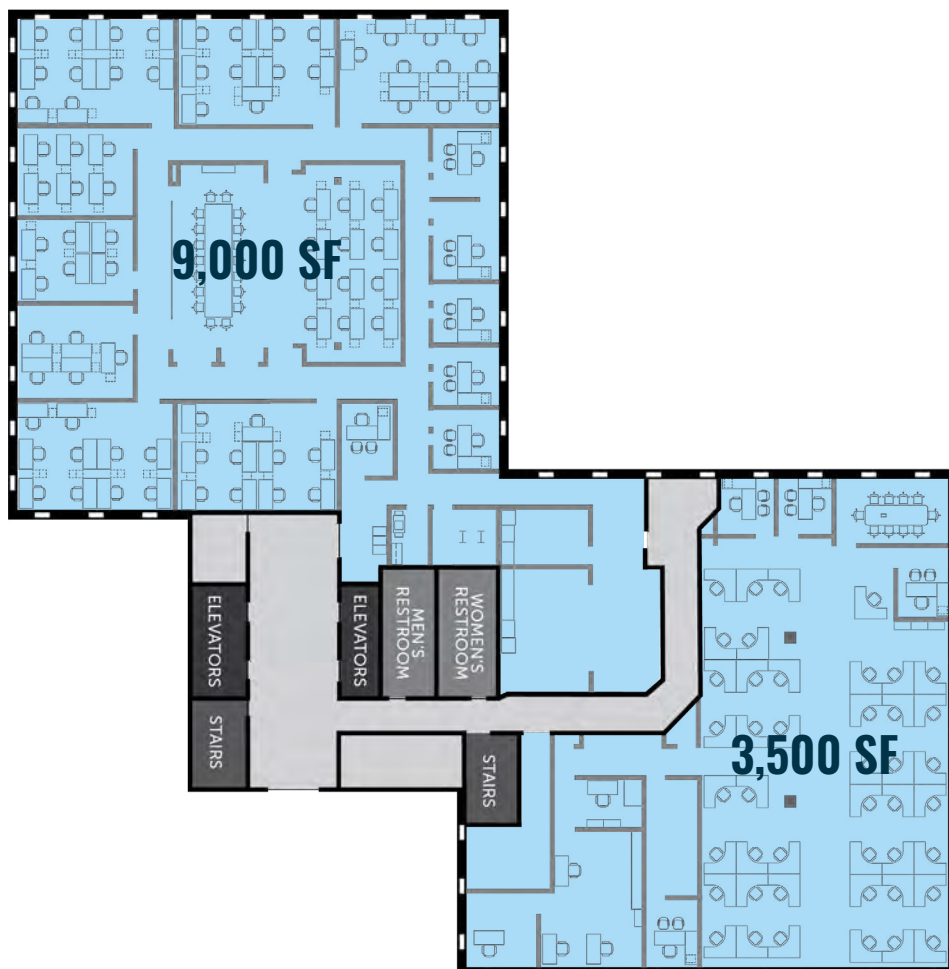
## 10TH FLOOR

17,500 SF\*

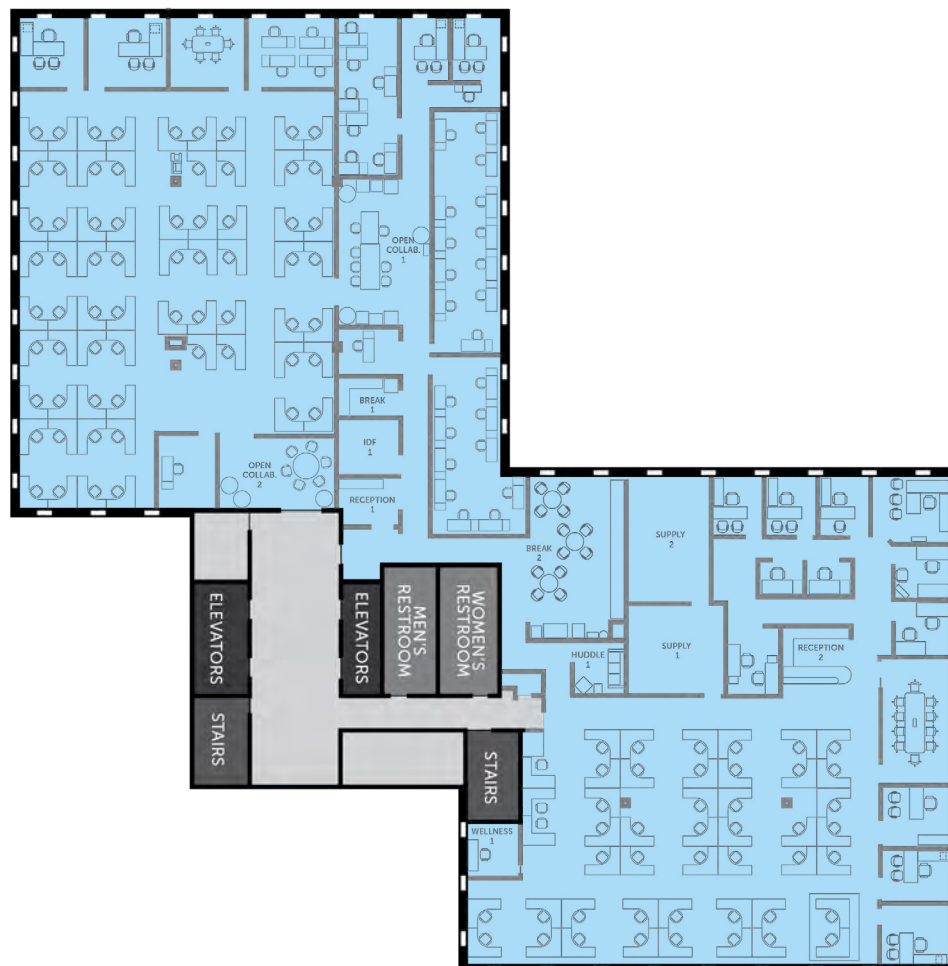
\*Can be combined

# FLOOR PLANS

## 1<sup>ST</sup> FLOOR - 9,000 SF & 3,500 SF



## 2<sup>ND</sup> FLOOR - 17,500 SF

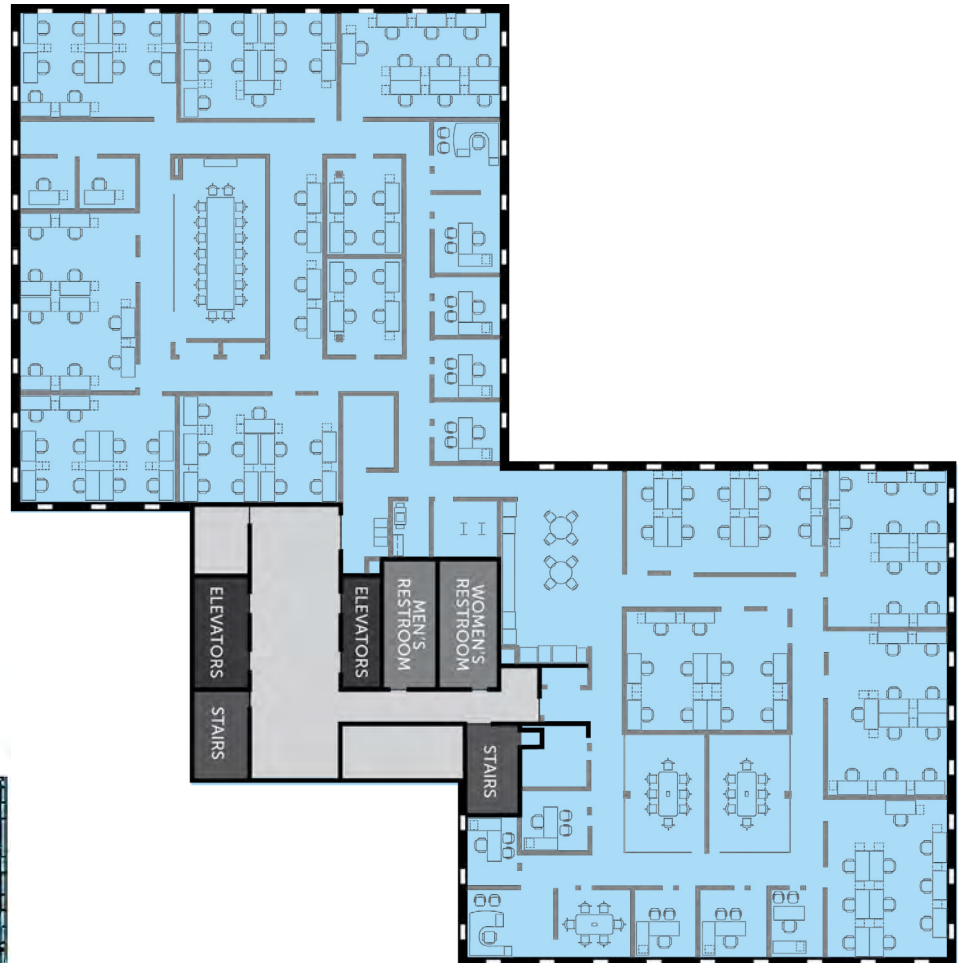


# FLOOR PLANS

3<sup>RD</sup> FLOOR - 6,521 SF



4<sup>TH</sup> FLOOR - 17,500 SF

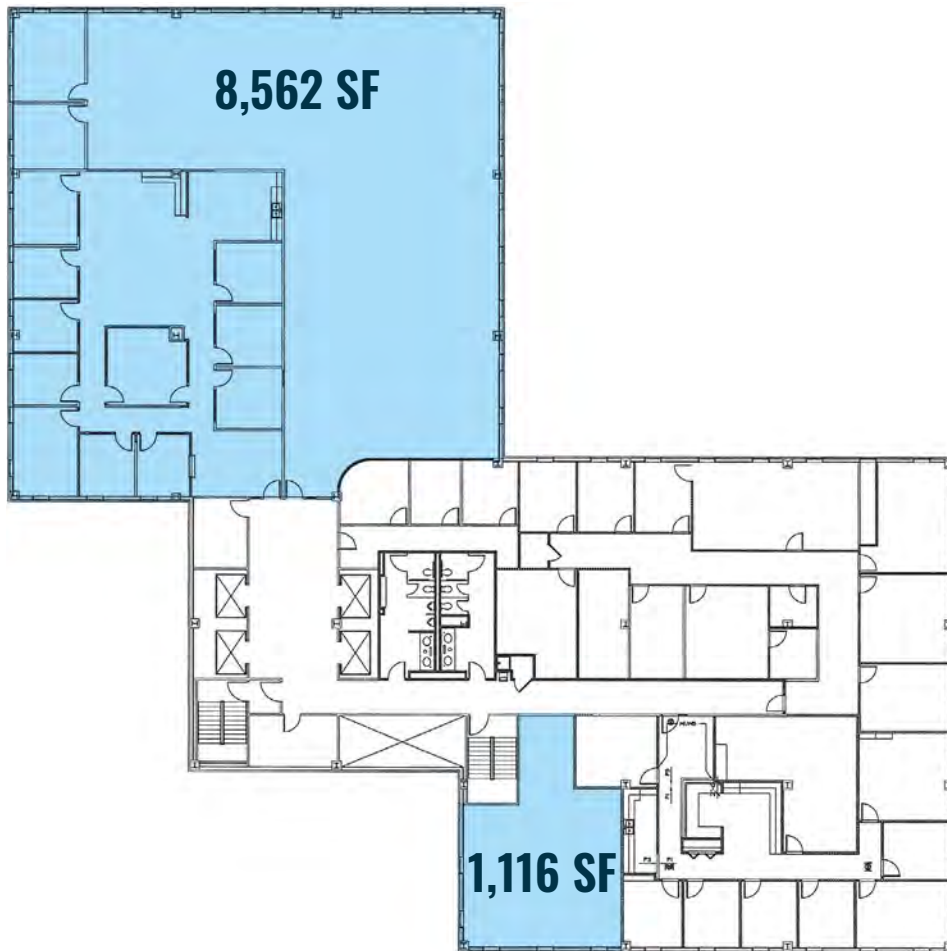




# FLOOR PLANS

## 6<sup>TH</sup> FLOOR - 3,690 SF

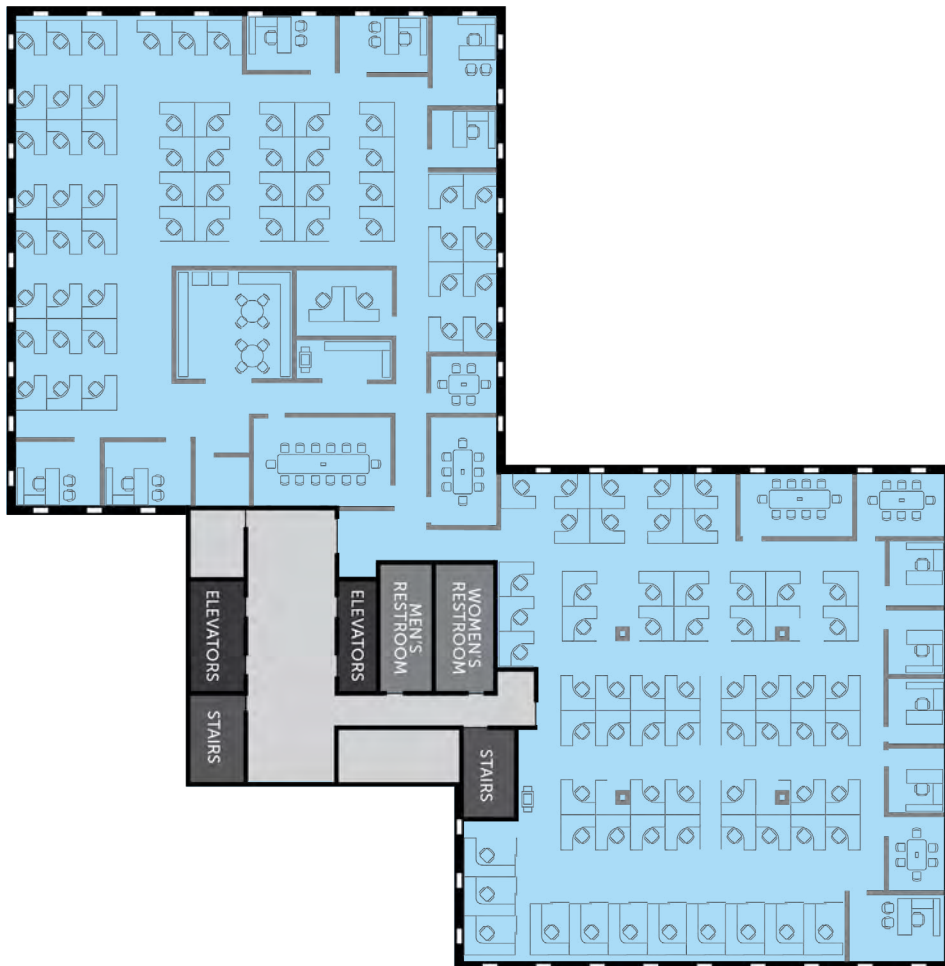
## 5<sup>TH</sup> FLOOR - 1,116 SF & 8,562 SF



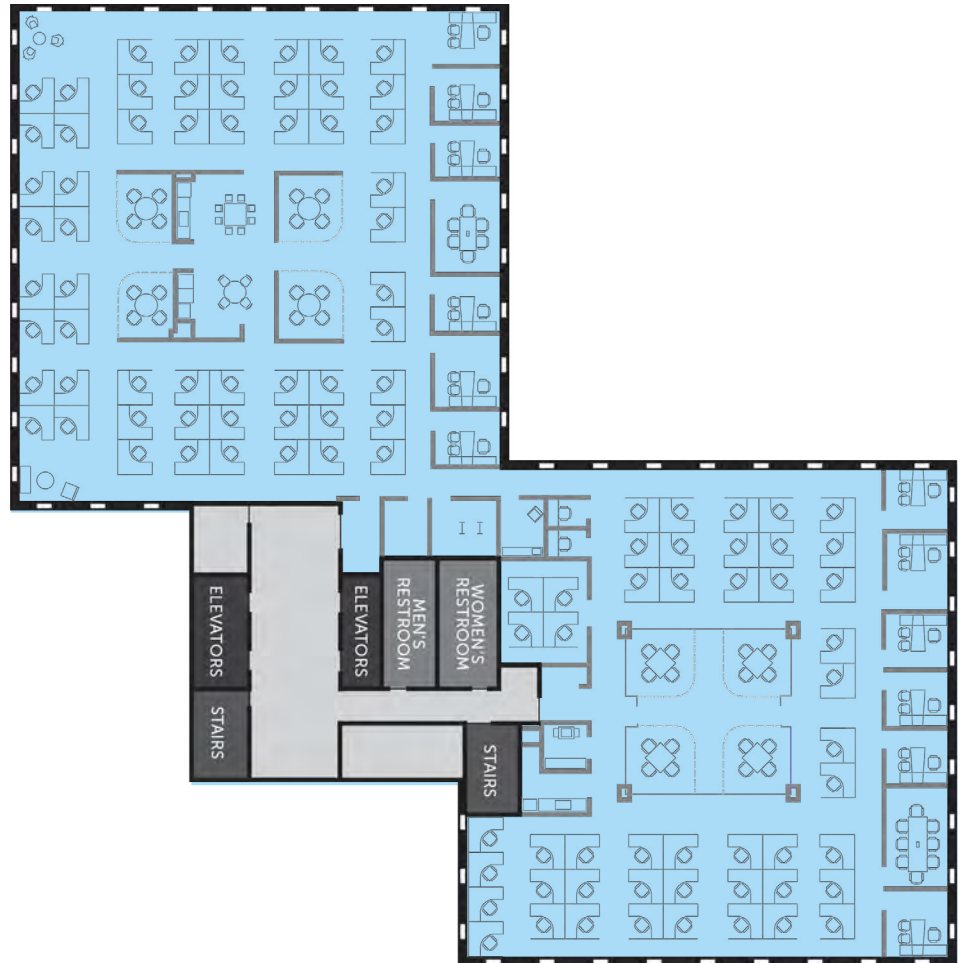


# FLOOR PLANS

7<sup>TH</sup> FLOOR - 17,500 SF



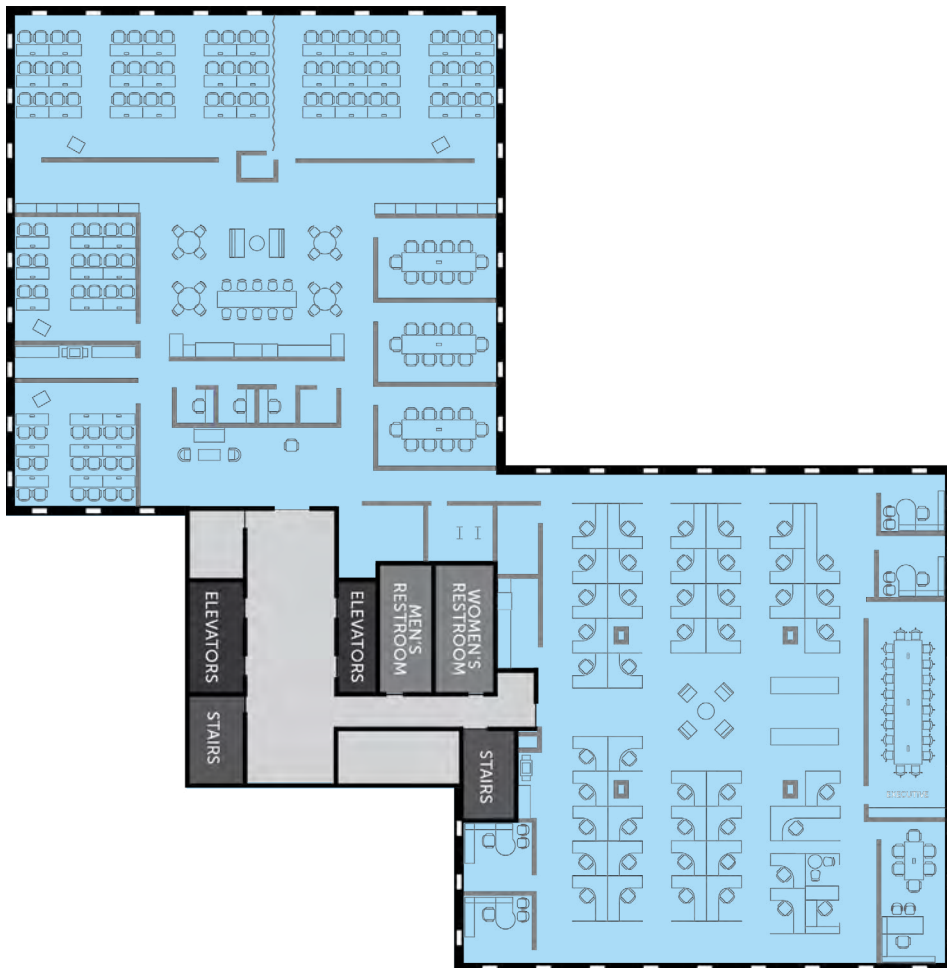
8<sup>TH</sup> FLOOR - 17,500 SF



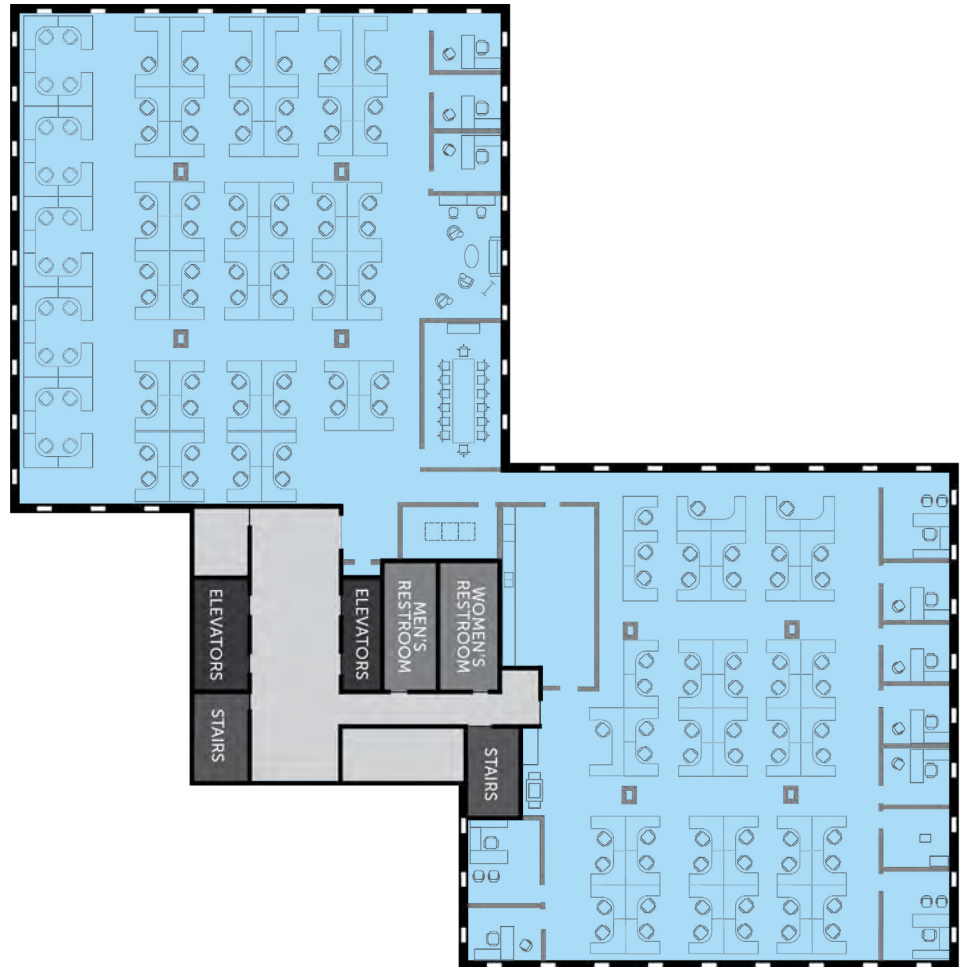


# FLOOR PLANS

9<sup>TH</sup> FLOOR - 17,500 SF



10<sup>TH</sup> FLOOR - 17,500 SF





# PROPERTY PHOTOS





# PROPERTY PHOTOS





# PROPERTY PHOTOS





# PROPERTY PHOTOS



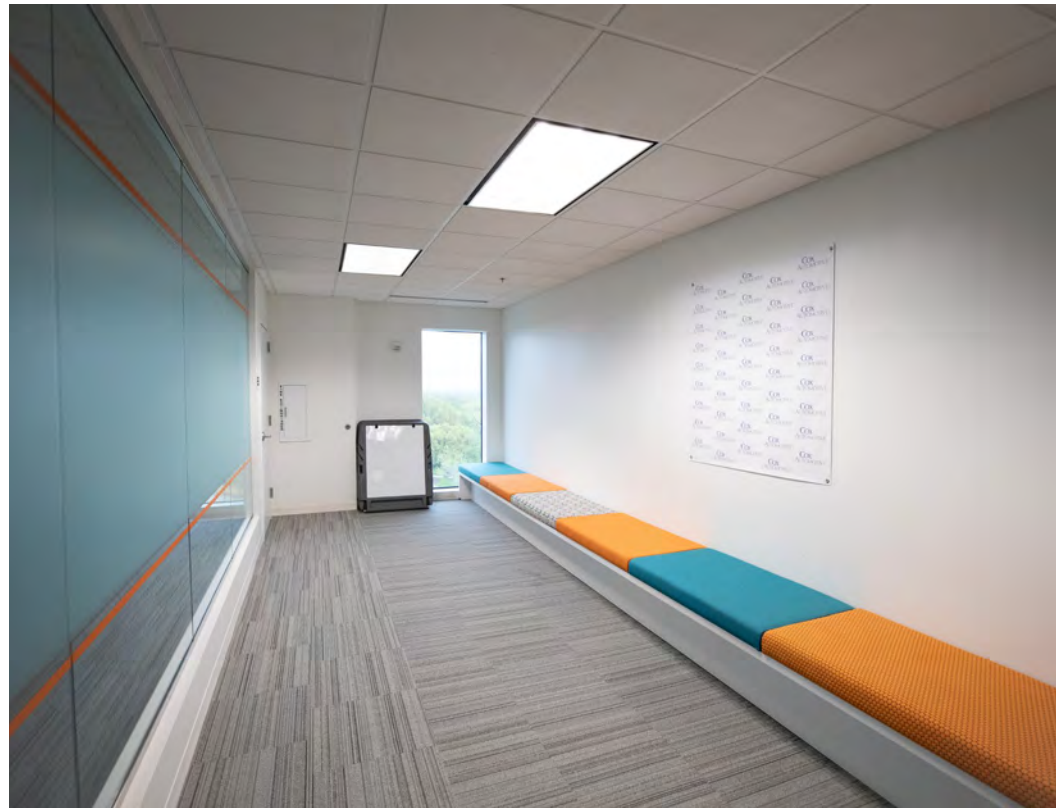


# PROPERTY PHOTOS





# PROPERTY PHOTOS





# OFFICE SPACE FOR LEASE

## MISSION TOWERS

5700 BROADMOOR STREET  
MISSION, KANSAS

### NICK SUAREZ, SIOR, CCIM

Executive Managing Director, Principal  
t 816-512-1012  
nsuarez@nzimmer.com

### TREY DEROUSSE, CCIM

Director  
t 816-268-4236  
tderousse@nzimmer.com

**NEWMARK**  
ZIMMER

