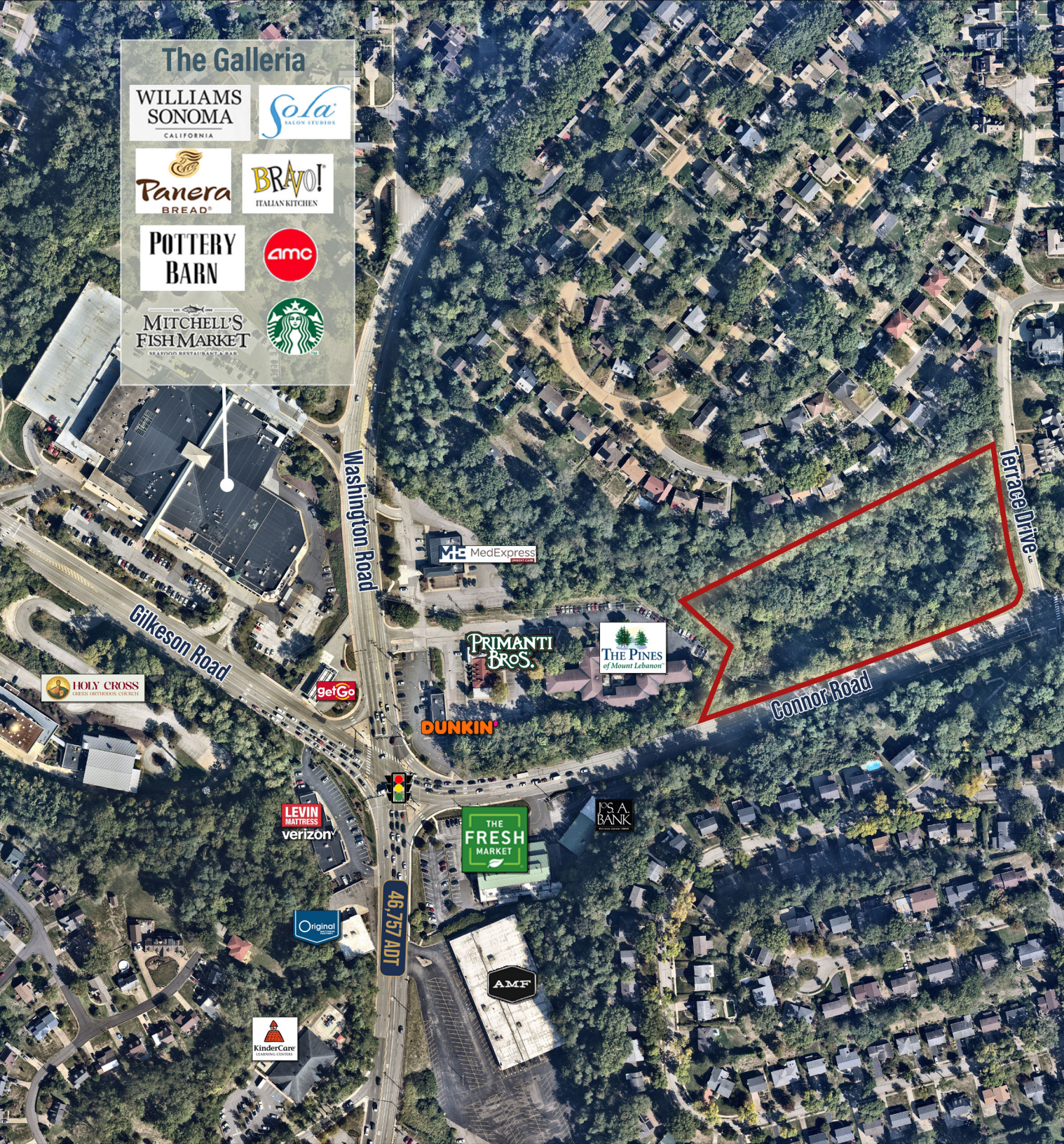


FOR SALE

SOUTH HILLS VILLAGE AREA LAND

NW Corner of Connor and Terrace Drive
Pittsburgh, PA 15228 | Mt. Lebanon

- Extremely rare opportunity to acquire land in the most coveted section of the South Hills
- Ideally located within steps from the intersection of Washington and Connor Road
- 4.45 acres for sale with utilities to the property line
- Potential uses include: schools, places of worship, and single family homes



JOHN JACKSON

john@legacyrealtypgh.com

412.866.LGCY (5429)

MIKAYLA MUCCI

mikayla@legacyrealtypgh.com

412.866.LGCY (5429)

LEGACY
REALTY PARTNERS



	1 mile	3 miles	5 miles
POPULATION			
2024 Population	9,334	94,078	235,478
2029 Population - Projection	9,182	93,511	233,778
2023-2028 Annual Population	-0.33%	-0.12%	-0.14%
HOUSEHOLD INCOME			
Average Household Income	\$135,686	\$146,071	\$125,581
HOUSING VALUE			
Average Home Value	\$403,462	\$368,767	\$338,281
DAYTIME POPULATION			
Daytime Population	12,551	83,499	202,300



© 2024 Legacy Realty Partners. All rights reserved. The information provided has been obtained from sources deemed reliable but has not been verified for accuracy or completeness. It is recommended that you conduct a thorough, independent investigation of the property and verify all details. Any reliance on this information is at your own risk. Legacy Realty Partners and the Legacy Realty Partners logo are trademarks of Legacy Realty Partners, Inc. All other trademarks displayed in this document belong to their respective owners, and the use of these logos does not imply any affiliation with or endorsement by Legacy Realty Partners. The photos contained herein are the property of their respective owners. Unauthorized use of these images is prohibited without the explicit written consent of the owner.

LEGACY
REALTY PARTNERS