

32 DOOR CROSS-DOCK ON 6.5± ACRES FOR LEASE

350 Benigno Boulevard, Bellmawr, NJ 08031

eagleview®



OWNED & OPERATED BY



PROPERTY DETAILS

31,300± SF TOTAL:

- 27,800± SF dock
- 32 loading positions
- 3,500± SF office
- 3 drive-through shop bays

6.53± ACRE SITE:

- Paved, fenced & lit yard

IDEAL USES:

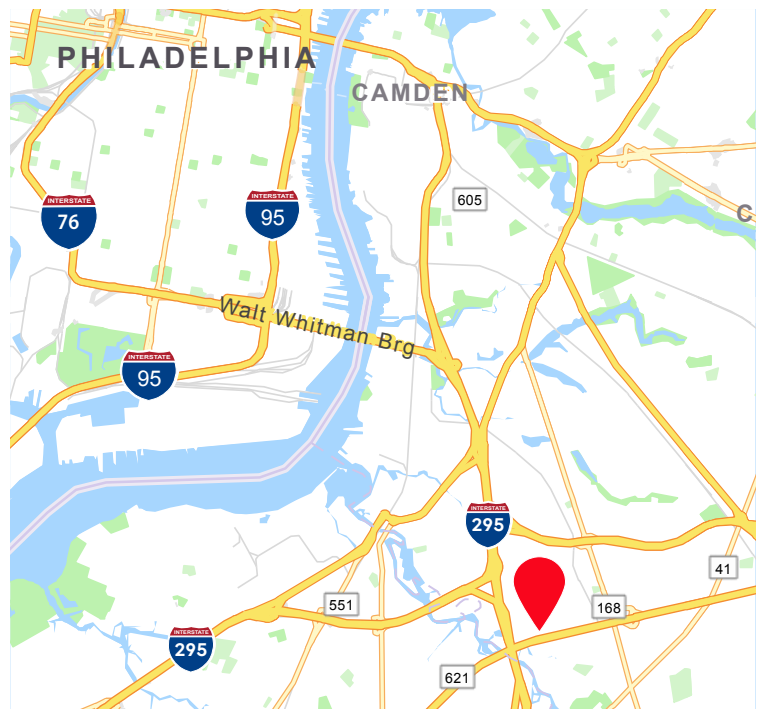
- Equipment rental & storage
- Vehicle repair & maintenance
- Truck terminal



LOCATION HIGHLIGHTS

Well located within 1 mile of the NJ Turnpike, 1± mile from I-295, & 3.7± miles from I-76

CALL FOR PRICING DETAILS



Burr & Temkin
Transportation Real Estate Specialists Since 1983



Chuck Dombrowski
Regional Vice President
724.554.6681
chuck@burrtemkin.com

Eric McFarlin
Broker
336.996.2550
ericm@burrtemkin.com

Brian Brockman - Broker
License #: 2078547
Bang Realty-New Jersey Inc
513.898.1551
bor@bangrealty.com

32 DOOR CROSS-DOCK ON 6.5± ACRES FOR LEASE

350 Benigno Boulevard, Bellmawr, NJ 08031



Burr & Temkin
Transportation Real Estate Specialists Since 1983



Chuck Dombrowski
Regional Vice President
724.554.6681
chuck@burrtemkin.com

Eric McFarlin
Broker
336.996.2550
ericm@burrtemkin.com

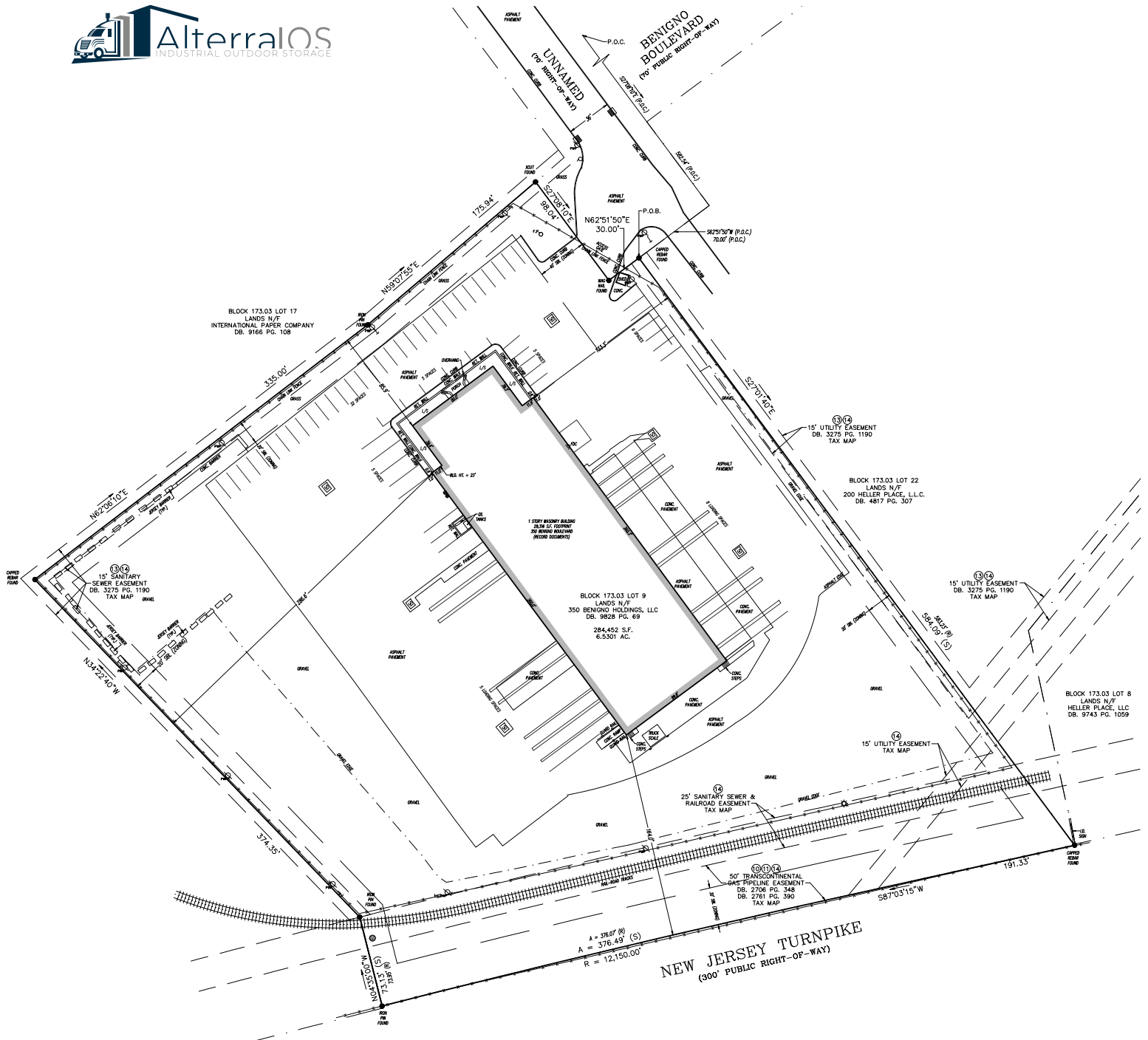
Brian Brockman - Broker
License #: 2078547
Bang Realty-New Jersey Inc
513.898.1551
bor@bangrealty.com

This statement is based upon information we believe to be correct and is obtained from sources we regard as reliable, but we assume no liability for errors or omissions therein.

32 DOOR CROSS-DOCK ON 6.5± ACRES FOR LEASE

350 Benigno Boulevard, Bellmawr, NJ 08031

Owned & Operated By



Burr & Temkin
Transportation Real Estate Specialists Since 1983



Chuck Dombrowski
Regional Vice President
724.554.6681
chuck@burrtemkin.com

Eric McFarlin
Broker
336.996.2550
ericm@burrtemkin.com

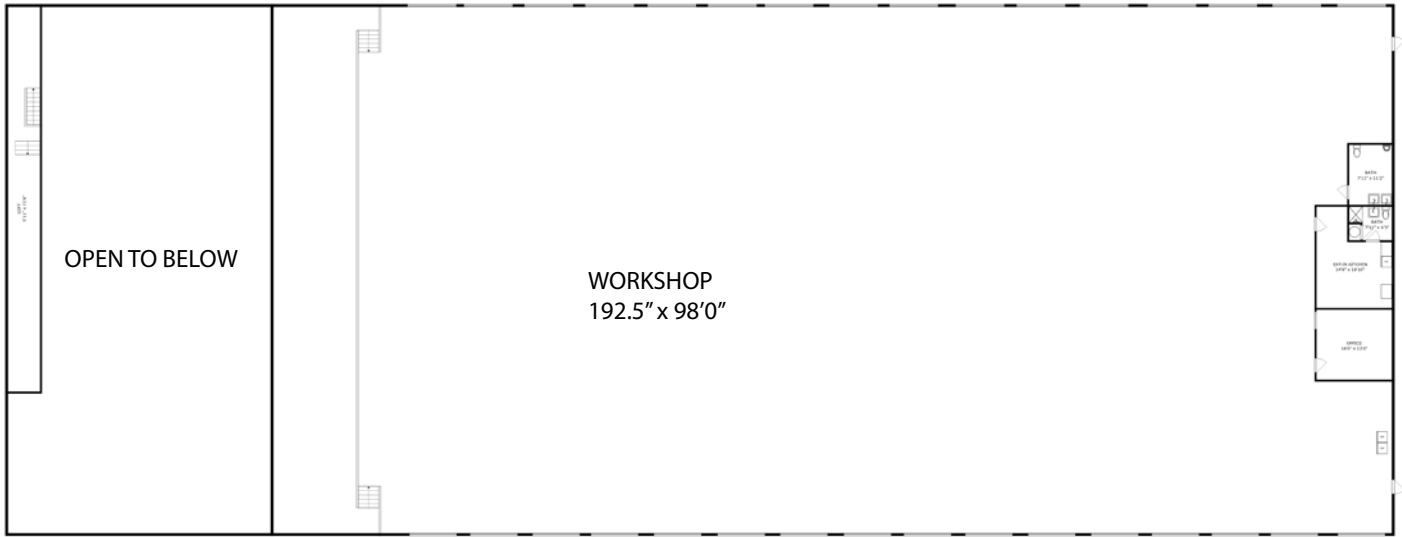
Brian Brockman - Broker
License #: 2078547
Bang Realty-New Jersey Inc
513.898.1551
bor@bangrealty.com

This statement is based upon information we believe to be correct and is obtained from sources we regard as reliable, but we assume no liability for errors or omissions therein.

32 DOOR CROSS-DOCK ON 6.5± ACRES FOR LEASE

350 Benigno Boulevard, Bellmawr, NJ 08031

BUILDING PLANS



Burr & Temkin
Transportation Real Estate Specialists Since 1983



Chuck Dombrowski
Regional Vice President
724.554.6681
chuck@burrtemkin.com

Eric McFarlin
Broker
336.996.2550
ericm@burrtemkin.com

Brian Brockman - Broker
License #: 2078547
Bang Realty-New Jersey Inc
513.898.1551
bor@bangrealty.com

This statement is based upon information we believe to be correct and is obtained from sources we regard as reliable, but we assume no liability for errors or omissions therein.

32 DOOR CROSS-DOCK ON 6.5± ACRES FOR LEASE

350 Benigno Boulevard, Bellmawr, NJ 08031



OWNED & OPERATED BY



Burr & Temkin
Transportation Real Estate Specialists Since 1983



Chuck Dombrowski
Regional Vice President
724.554.6681
chuck@burrtemkin.com

Eric McFarlin
Broker
336.996.2550
ericm@burrtemkin.com

Brian Brockman - Broker
License #: 2078547
Bang Realty-New Jersey Inc
513.898.1551
bor@bangrealty.com

This statement is based upon information we believe to be correct and is obtained from sources we regard as reliable, but we assume no liability for errors or omissions therein.

32 DOOR CROSS-DOCK ON 6.5± ACRES

FOR LEASE

350 Benigno Boulevard, Bellmawr, NJ 08031



Burr & Temkin
Transportation Real Estate Specialists Since 1983



Chuck Dombrowski
Regional Vice President
724.554.6681
chuck@burrtemkin.com

Eric McFarlin
Broker
336.996.2550
ericm@burrtemkin.com

Brian Brockman - Broker
License #: 2078547
Bang Realty-New Jersey Inc
513.898.1551
bor@bangrealty.com

This statement is based upon information we believe to be correct and is obtained from sources we regard as reliable, but we assume no liability for errors or omissions therein.