

FOR LEASE

INDUSTRIAL PARK



**COLDWELL BANKER
COMMERCIAL**
BLAIR

14130

14120

15120

14126

14110

14060

14000 GANNET STREET

SANTA FE SPRINGS, CALIFORNIA 90670

For more information contact:

PATRICK MICHEL

CBC Blair | Vice President

T: 323.594.0284 | O: 562.548.7414

BRE #01924800

Patrick@cbcblair.com

COLDWELL BANKER COMMERCIAL

CBC Blair

333 West Broadway, Ste. 312

Long Beach, CA 90802

Company BRE #01330395

www.cbcblair.com



BUILDING DESCRIPTION

Address:	14000 Gannet Street Santa Fe Springs, CA 90670
Available Size:	1,200 - 3,441 SF
Asking Rate:	\$1.30 - \$1.40 PSF
Lease Type:	Gross
CAM:	\$0.18 PSF
Zoning:	SSM2
APN:	8069-011-024

PROPERTY HIGHLIGHTS

- Ample free parking
- Close proximity to 5 Freeway
- Centralized location between LA & OC
- Professionally managed business park
- Strong industrial community
- Business friendly city

14000
GANNET STREET
SANTA FE SPRINGS, CA

For more information contact:

PATRICK MICHEL
CBC Blair | Vice President
T: 323.594.0284 | O: 562.548.7414
BRE #01924800
Patrick@cbclair.com

COLDWELL BANKER COMMERCIAL
CBC BLAIR
333 West Broadway, Ste. 312
Long Beach, CA 90802
Company BRE #01330395

AVAILABLE SUITES

BLDG:	SUITE	SF	RATE	TYPE	COMMENTS
14120	106	3,441	\$1.30 PSF	Flex	10' roll-up, warehouse, office, 2 restrooms
14126	101	2,988	\$1.40 PSF	Warehouse	10' roll-up, 1 restroom, 3 offices, warehouse
14126	109	1,632	\$1.40 PSF	Warehouse	10' roll-up, office, 1 restroom, warehouse
14130	110	1,200	\$1.40 PSF	Warehouse	10' roll-up, 1 restroom, mezzanine

All measurements are approximate. While deemed reliable, no information on these floor plans should be relied upon without independent verification.



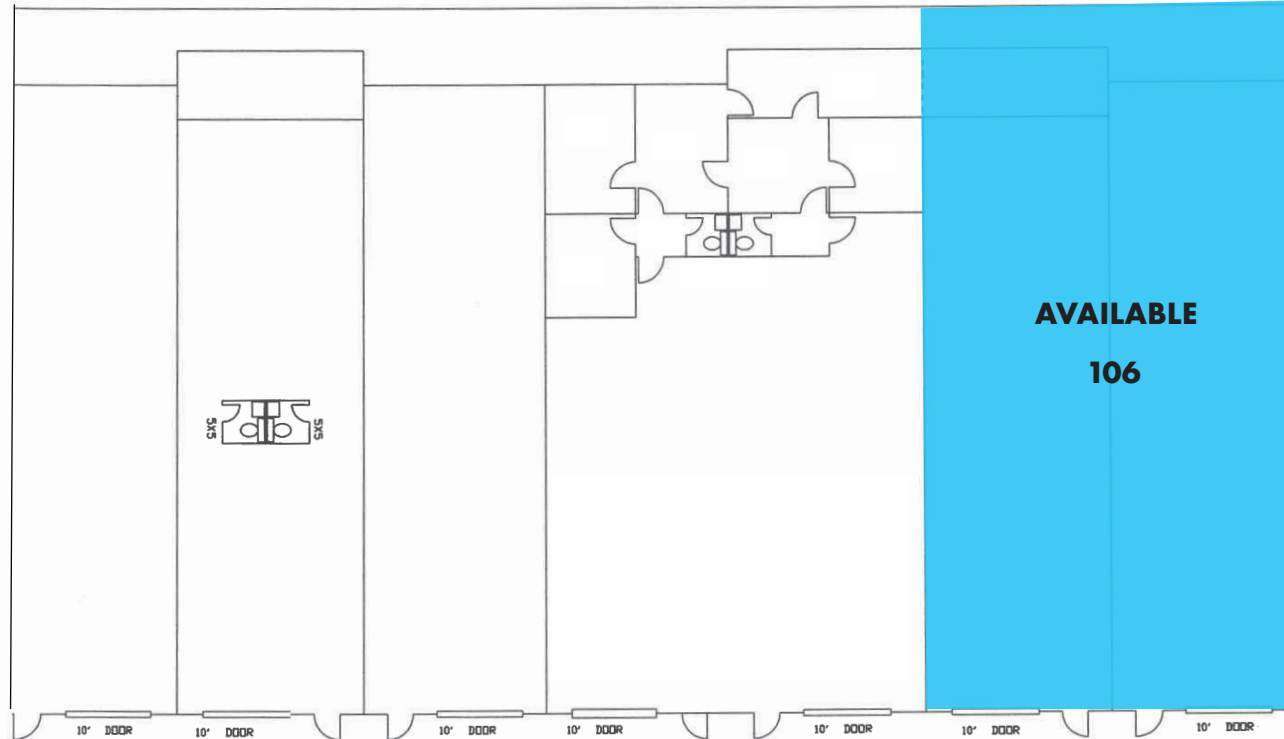
14000
GANNET STREET
 SANTA FE SPRINGS, CA

For more information contact:

PATRICK MICHEL
 CBC Blair | Vice President
 T: 323.594.0284 | O: 562.548.7414
 BRE #01924800
 Patrick@cbclair.com

COLDWELL BANKER COMMERCIAL
 CBC BLAIR
 333 West Broadway, Ste. 312
 Long Beach, CA 90802
 Company BRE #01330395

14120 GANNET - BUILDING 4



All measurements are approximate. While deemed reliable, no information on these floor plans should be relied upon without independent verification. Unit has built-out office that is not shown above.

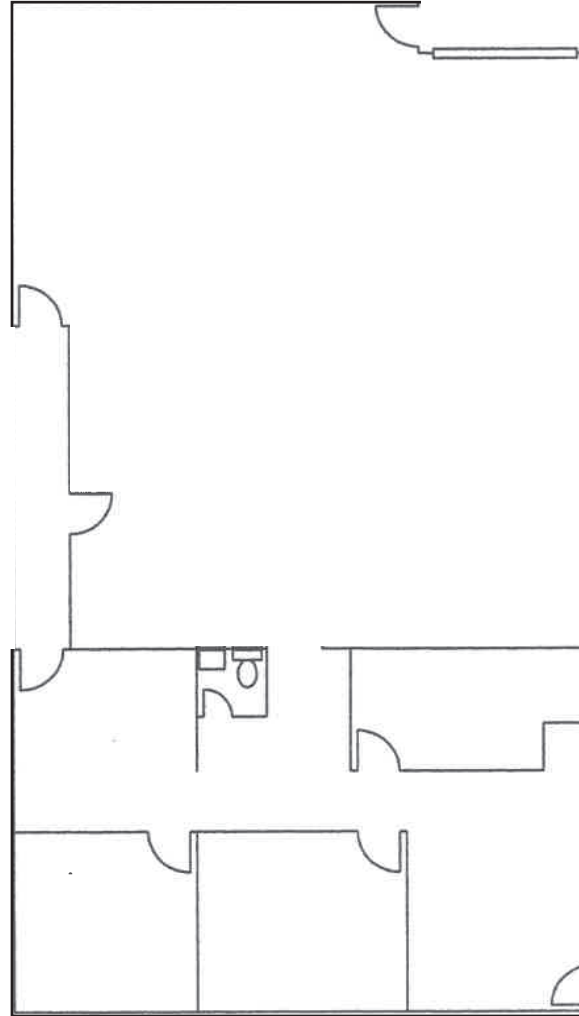
14000
GANNET STREET
SANTA FE SPRINGS, CA

For more information contact:

PATRICK MICHEL
CBC Blair | Vice President
T: 323.594.0284 | O: 562.548.7414
BRE #01924800
Patrick@cbclair.com

COLDWELL BANKER COMMERCIAL
CBC BLAIR
333 West Broadway, Ste. 312
Long Beach, CA 90802
Company BRE #01330395

14126 GANNET STREET #101 - BLDG 5



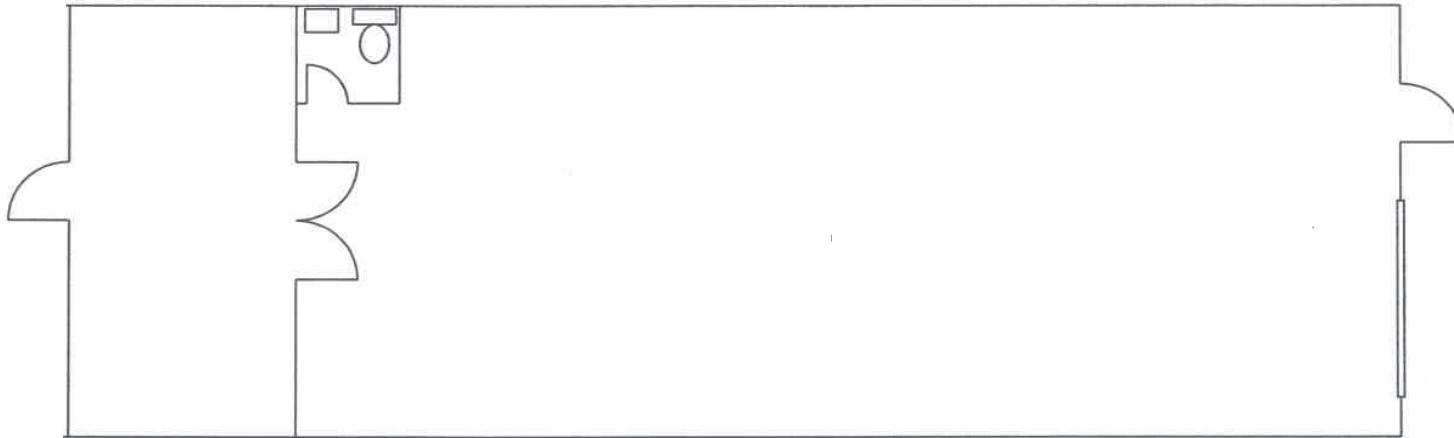
All measurements are approximate. While deemed reliable, no information on these floor plans should be relied upon without independent verification. Unit has built-out office that is not shown above.

14000
GANNET STREET
SANTA FE SPRINGS, CA

For more information contact:

PATRICK MICHEL
CBC Blair | Vice President
T: 323.594.0284 | O: 562.548.7414
BRE #01924800
Patrick@cbcblair.com

COLDWELL BANKER COMMERCIAL
CBC BLAIR
333 West Broadway, Ste. 312
Long Beach, CA 90802
Company BRE #01330395



All measurements are approximate. While deemed reliable, no information on these floor plans should be relied upon without independent verification. Unit has built-out office that is not shown above.

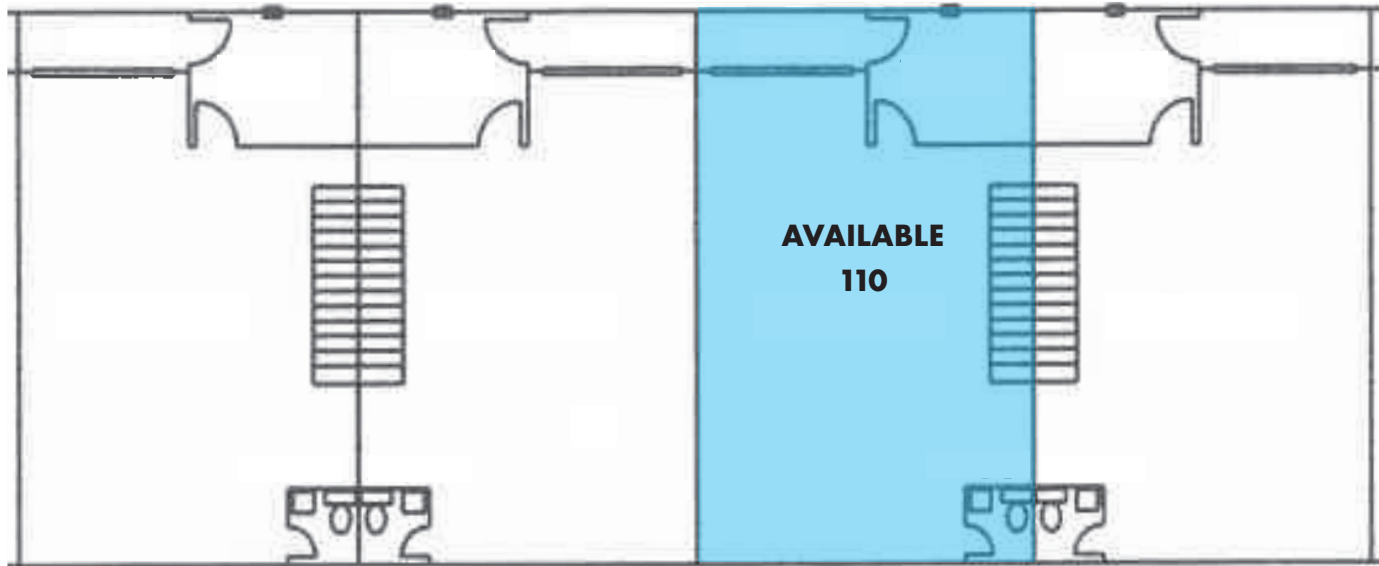
14000
GANNET STREET
SANTA FE SPRINGS, CA

For more information contact:

PATRICK MICHEL
CBC Blair | Vice President
T: 323.594.0284 | O: 562.548.7414
BRE #01924800
Patrick@cbcblair.com

COLDWELL BANKER COMMERCIAL
CBC BLAIR
333 West Broadway, Ste. 312
Long Beach, CA 90802
Company BRE #01330395

14130 GANNET STREET #110 - BLDG 6



All measurements are approximate. While deemed reliable, no information on these floor plans should be relied upon without independent verification. Unit has built-out office that is not shown above.

14000
GANNET STREET
SANTA FE SPRINGS, CA

For more information contact:

PATRICK MICHEL
CBC Blair | Vice President
T: 323.594.0284 | O: 562.548.7414
BRE #01924800
Patrick@cbcblair.com

COLDWELL BANKER COMMERCIAL
CBC BLAIR
333 West Broadway, Ste. 312
Long Beach, CA 90802
Company BRE #01330395